

GAS FURNACES



Rheem
Prestige[®]
S E R I E S

SUPER QUIET 80 TWO STAGE 80% A.F.U.E.† DOWNFLOW GAS FURNACES

The Rheem *Prestige Series*[®] *Super Quiet 80* Two Stage Downflow line of downflow gas furnaces is designed for installation in closets, alcoves, utility rooms, or attics. The design is certified by CSA International.

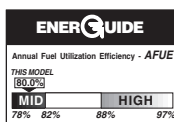
Features

- Patented heat exchanger, constructed of both stainless and aluminized steel for the maximum in corrosion resistance.
- Low profile "34 inch" [864 mm] design is lighter and easier to handle, and leaves room for optional equipment.
- Energy efficient and quiet ECM 2+ motor.
- Improves cooling efficiency when matched with rated condensing unit and coil.
- Constant CFM.
- Dip switch settings for selectable cooling airflow.
- On-demand dehumidification terminal for improved comfort in cooling mode.
- Left or right side gas and electric inlet connections.
- All models feature an integrated board with humidifier and electronic air cleaner hookups.
- Insulated blower compartment, a slow-open gas valve, specially designed draft inducer motor and blower motor make it one of the quietest furnaces on the market today.
- Pre-paint galvanized steel cabinet.
- Easy door removal and replacement.
- Molded permanent filter.
- Compatible with single or two-stage thermostat. (For optimal performance, two-stage thermostat recommended.)

A variety of cooling coils and plenums designed to use with Rheem *Prestige Series*[®] *Super Quiet 80* Two Stage Downflow gas furnaces are available as optional accessories.

†A.F.U.E. (Annual Fuel Utilization Efficiency) calculated in accordance with Department of Energy test procedures.

RGLR- SERIES
ECM Equipped
Models with Input Rates from
75,000 to 125,000 BTU/HR
115 Volts, 60 Hz, Single-Phase
[22 to 37 kW]
(U.S. & Canadian Models)





RHEEM PRESTIGE SERIES SUPER QUIET 80 TWO STAGE DOWNFLOW GAS FURNACE



ECM Motor



IFC Integrated
Furnace Control



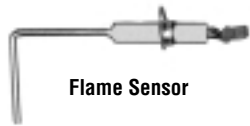
ECM Interface
Furnace Controls



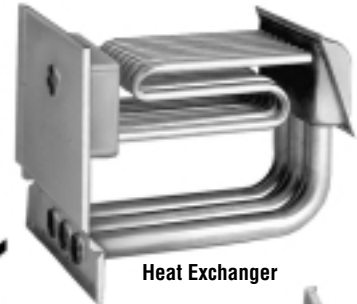
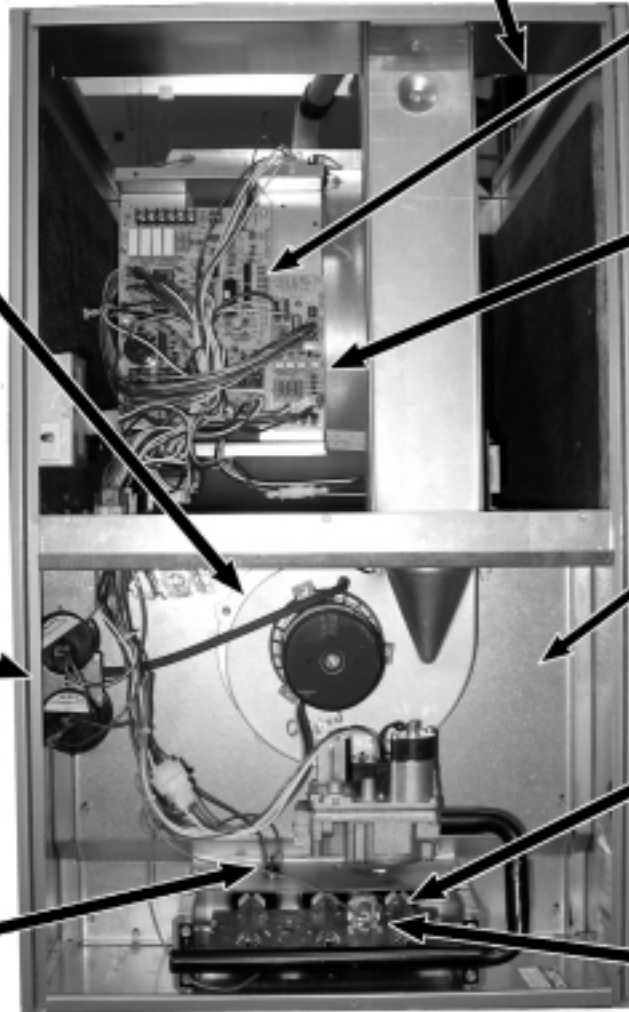
Two-Speed
Draft Inducer Motor



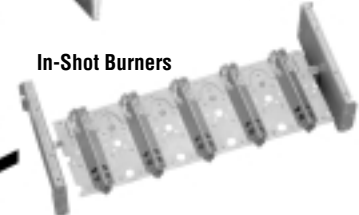
Pressure Switch



Flame Sensor



Heat Exchanger



In-Shot Burners



Direct Spark Ignitor

STANDARD EQUIPMENT

Completely assembled and wired; 2 speed induced draft blower; high and low pressure switches; 2 stage redundant main gas control; blower compartment door safety switch; solid state time on/time off blower control; limit control; transformer; ECM blower motor. Furnaces are equipped with cooling/heating relay and transformer (40VA) ready for air conditioning applications. (Please note: a thermostat is not included as standard equipment.) Flame sensor diagnostics; fused-protection (secondary), **3rd speed option for continuous fan.**

NOTE: Furnace is not listed for use with fuels other than natural or L.P. (propane) gas.

The complete terms of limited and other warranties are available at our sales office, or through local installer.

All models can be converted by a qualified HVAC professional or local service dealer to use L.P. (propane) gas without changing burners. Factory approved kits must be used to convert from natural to L.P. (propane) gas and may be ordered as optional accessories from a Rheem parts distributor.

For L.P. (propane) operation, refer to Conversion Kit Index Form.

NOTE: For natural and L.P. (propane) gas models, direct spark ignition is 100% lockout type.

WARNING
THIS FURNACE IS NOT APPROVED
OR RECOMMENDED
FOR USE IN MOBILE HOMES

BEFORE PURCHASING THIS APPLIANCE, READ IMPORTANT ENERGY COST AND EFFICIENCY INFORMATION AVAILABLE FROM YOUR RETAILER.

PHYSICAL DATA AND SPECIFICATIONS (DOWNFLOW) U.S. AND CANADA MODELS

| MODEL NUMBERS RGLR- SERIES | 07EAMKR 07NAMKR | 07EBRQR 07NBRQR | 10EBRMR 10NBRMR | 12EARMR 12NARMR |
|---|----------------------------|----------------------------|----------------------------|----------------------------|
| 100% High Input—BTU/Hr [kW] ② | 75,000 [22] | 75,000 [22] | 100,000 [29] | 125,000 [37] |
| High Heating Capacity—BTU/Hr [kW] ① | 60,000 [18] | 60,000 [18] | 80,000 [23] | 100,000 [29] |
| 70% Low Input—BTU/Hr [kW] | 52,500 [15] | 52,500 [15] | 70,000 [20] | 87,500 [25] |
| Low Heating Capacity—BTU/Hr [kW] | 42,000 [12] | 42,000 [12] | 56,000 [16] | 70,000 [20] |
| Heating—Ext. Static Pressure [kPa] | .12 [.029] | .12 [.029] | .15 [.037] | .20 [.05] |
| Blower (D x W) [mm] | 11 x 7 [279 x 178] | 11 x 10 [279 x 254] | 11 x 10 [279 x 254] | 11 x 10 [279 x 254] |
| ECM Motor H.P. [W] | 1/2 [373] | 3/4 [559] | 1 [746] | 1 [746] |
| Motor Full Load Amps. | 7.7 | 9.6 | 12.8 | 12.8 |
| Unit Amps | 8.7 | 12.0 | 12.0 | 12.0 |
| Maximum Overcurrent Protection | 15 | 15 | 15 | 15 |
| Cooling CFM @ .5" [kPa] E.S.P. (Nominal) [L/s] | 1200 [566] | 1600 [755] | 2000 [944] | 2000 [944] |
| Max. E.S.P. (In. W.C.) [kPa] | 0.8 [0.2] | 0.8 [0.2] | 0.8 [0.2] | 0.8 [0.2] |
| Temperature Rise Range °F [°C] | High Fire | 30-60 [17-33] | 25-55 [14-31] | 30-60 [17-33] |
| | Low Fire | 20-50 [11-28] | 20-50 [11-28] | 25-55 [14-31] |
| Max. Outlet Air Temp. °F [°C] | 165 [73.9] | 165 [73.9] | 165 [73.9] | 185 [85] |
| Standard Filter Size—Inches [mm] | (2) 12 x 20 [305 x 508] | (2) 14 x 20 [356 x 508] | (2) 14 x 20 [356 x 508] | (2) 14 x 20 [356 x 508] |
| Approx. Shipping Weight (Lbs.) [kg] | 115 [52] | 115 [52] | 120 [54] | 140 [63] |
| AFUE ① | 80% | 80% | 80% | 80% |

① In accordance with D.O.E. test procedures.

② See Conversion Kit Index Form for high altitude derate in U.S. applications. For Canadian applications, reference the furnace installation instructions.

GENERAL TERMS OF LIMITED WARRANTY

Rheem will furnish a replacement for any part of this product which fails in normal use and service within the applicable period stated, in accordance with the terms of the limited warranty.

For Complete Details of the Limited Warranty, Including Applicable Terms and Conditions, See Your Local Installer or Contact the Manufacturer for a Copy.

Gas Heat Exchanger Limited WarrantyTwenty (20) Years
*Any Other Part.....Five (5) Years

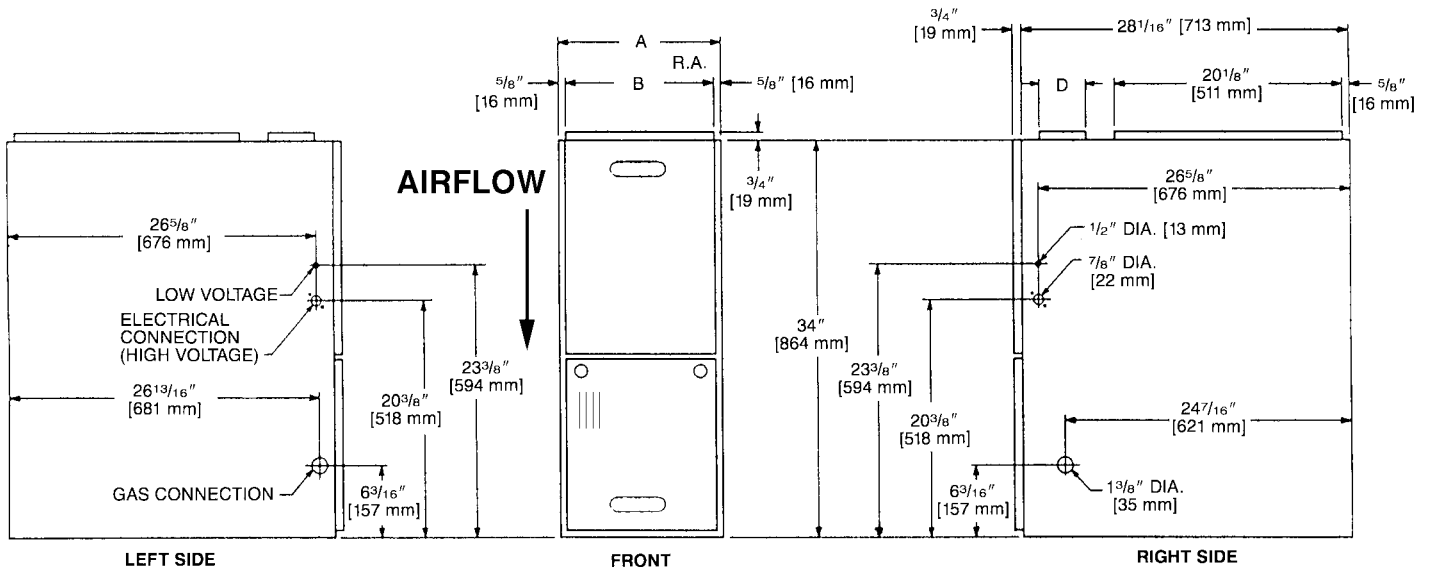
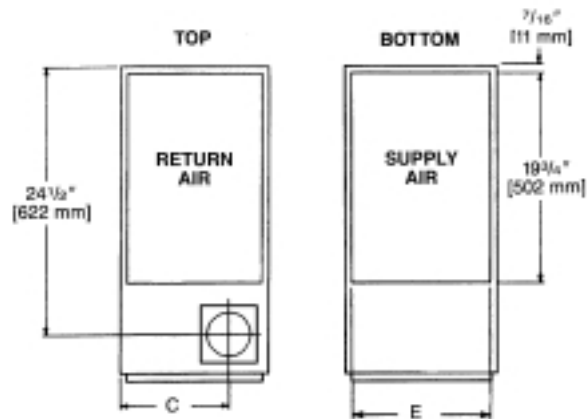
*This five year limited warranty is applicable only to single-phase products installed in residential applications on or after January 1, 2001.

MODEL IDENTIFICATION—DOWNFLOW MODELS

| <u>R</u> | <u>G</u> | <u>L</u> | <u>R</u> | <u>—</u> | <u>07E</u> | <u>A</u> | <u>M</u> | <u>K</u> | <u>R</u> |
|----------|----------------|----------|------------------|----------|---------------------------|---------------------|-------------------------------|------------------------------------|---|
| Rheem | Gas Furnace | Downflow | Design Series | | Heating Input Designation | Variations | Blower Designation | Heating & Cooling Designation | Fuel Type |
| | | | | | Electric Ignition | A = Std. Cabinet | U = 11 x 6 [279 x 152 mm] | K = 600-1200 CFM [283-566 L/s] | R = Natural Gas, U.S. and Canadian Standard Furnace |
| | | | | | NO _x Model | B = Wide Cabinet | M = 11 x 7 [279 x 178 mm] | M = 1200-2000 CFM [566-944 L/s] | |
| | | | | | Input BTU/HR | | R = 11 x 10 [279 x 254 mm] | Q = 1000-1600 CFM [566-755 L/s] | |
| | | | | | 07E 07N 75,000 [22 kW] | | | | |
| | | | | | 10E 10N 100,000 [29 kW] | | | | |
| | | | | | 12E 12N 125,000 [37 kW] | | | | |

[] Designates Metric Conversions

DOWNFLOW DIMENSIONS



DIMENSIONS AND CLEARANCE TO COMBUSTIBLE MATERIAL (INCHES) [mm]

| MODEL RGLR-SERIES | A | B | C | D | E | REDUCED CLEARANCES (IN.) [mm] | | | | | | |
|-------------------|--------------|----------------|--------------|---|--------------|-------------------------------|------------|------|--------|--------|-----------|-------------------------|
| | | | | | | LEFT SIDE | RIGHT SIDE | BACK | TOP | FRONT | VENT | SHIP. WGTs. (LBS.) [kg] |
| 07A | 17 1/2 [445] | 16 11/32 [415] | 12 1/8 [308] | Ⓛ | 16 5/8 [422] | 0 | 3 ② | 0 | 1 [25] | 3 [76] | 6 [152] ③ | 110 [49.9] |
| 07B | 21 [533] | 19 27/32 [504] | 13 7/8 [352] | Ⓛ | 20 1/8 [511] | 0 | 0 | 0 | 1 [25] | 3 [76] | 6 [152] ③ | 115 [52.2] |
| 10 | 21 [533] | 19 27/32 [504] | 13 7/8 [352] | Ⓛ | 20 1/8 [511] | 0 | 0 | 0 | 1 [25] | 3 [76] | 6 [152] ③ | 120 [54.4] |
| 12 | 24 1/2 [622] | 23 11/32 [593] | 15 5/8 [397] | Ⓛ | 23 5/8 [600] | 0 | 0 | 0 | 1 [25] | 3 [76] | 6 [152] ③ | 140 [63.5] |

NOTES: ① May require a 3" [76 mm] to 4" [102 mm] or 3" [76 mm] to 5" [127 mm] adapter.

② May be 0" [0 mm] with type B vent.

③ May be 1" [25 mm] with type B vent.

Furnaces must be vented in accordance with the National Fuel Gas Code, ANSI Z223.1 and/or Can/CGA-B149 Installation Codes and in accordance with local codes.

BLOWER PERFORMANCE DATA—DOWNFLOW MODELS

| MODEL RGLR- | BLOWER SIZE (D X W) INCHES [mm] | ECM MOTOR H.P. [W] | BLOWER SPEED | CFM [L/s] AIR DELIVERY EXTERNAL STATIC PRESSURE INCHES WATER COLUMN [kPa] |
|-------------|---------------------------------------|--------------------------|-----------------|---|
| | | | | .1 [.02]–.8 [.2] |
| 07A | 11 x 7 [279 x 178] | 1/2 [373] | HIGH | 1200 [566] |
| | | | MED-HI | 1000 [472] |
| | | | MED LOW | 800 [378] 600 [283] |
| 07B | 11 x 10 [279 x 254] | 3/4 [559] | HIGH | 1600 [755] |
| | | | MED-HI | 1400 [661] |
| | | | MED LOW | 1200 [566] 1000 [472] |
| 10, 12 | 11 x 10 [279 x 254] | 1 [746] | HIGH | 2000 [944] |
| | | | MED-HI | 1600 [755] |
| | | | MED LOW | 1400 [661] 1200 [566] |

NOTE: See Coil Specification Sheet for coil data.

[] Designates Metric Conversions

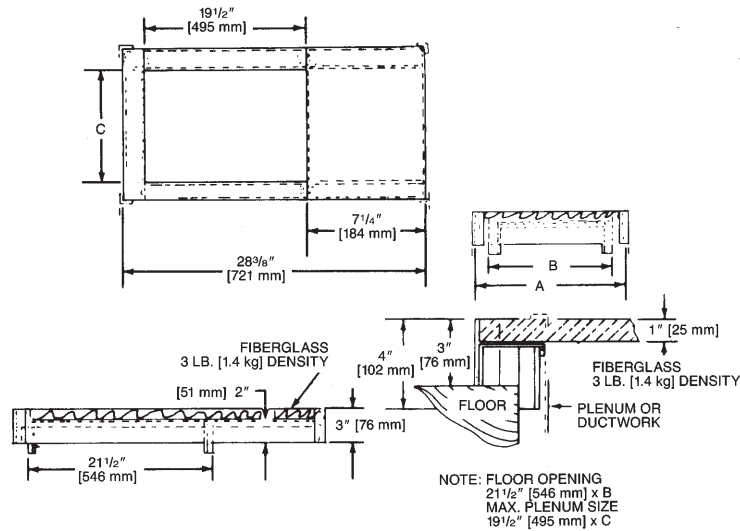
ACCESSORIES—DOWNFLOW

DOWNFLOW WARNING: Unit design is certified for installation on non-combustible floor. A special factory supplied combustible floor sub-base is required when installing on a combustible floor. Failure to install the sub-base may result in fire, property damage and personal injury.

COMBUSTIBLE FLOOR BASE DIMENSIONS

| COMBUSTIBLE FLOOR BASE | USE WITH FURNACE SIZES | A IN. [mm] | B IN. [mm] | C IN. [mm] |
|------------------------|-----------------------------|--------------------------------------|--------------------------------------|--------------------------------------|
| RXGC-B17 | RGLR-07EAMK | 18 [457] | 16 ³ / ₄ [425] | 14 ³ / ₄ [451] |
| RXGC-B21 | RGLR-07EBRQ, RGLR-10EBRM | 21 ¹ / ₂ [546] | 20 ¹ / ₄ [514] | 18 ¹ / ₄ [464] |
| RXGC-B24 | RGLR-12EARMR | 25 [635] | 23 ³ / ₄ [603] | 21 ³ / ₄ [552] |

[] Designates Metric Conversions



RXPF-F01 and F02

FOSSIL FUEL KITS—are for use with Rheem Heat Pumps and Super Quiet 80 warm air furnaces. The RXPF-F02 also meets TVA requirements.

RXGF-CC*

FILTER RACK—Downflow top return mount.
NOTE: Filter racks are shipped without filters.

*Filters available through PROSTOCK®.

FOR HIGH ALTITUDES:

HIGH ALTITUDE OPTION CODE: U.S. & Canada – None required for high altitudes.

HIGH ALTITUDE CONVERSION KITS: U.S. & Canada – None required for high altitudes.

80+ HIGH ALTITUDE INSTRUCTIONS

Caution: Always follow National Fuel Gas Code (NFGC) guidelines when converting for high altitudes. High altitude option codes are not required for these models. However, **the burner orifice size needs to be recalculated and verified** at elevations above 2000 ft. See Installation Instructions for more information.

NOTE: For Canadian installations only, an optional derate (manifold gas pressure reduction) method may be used to adjust the furnace for altitude. See Installation Instructions for more information. This optional method may **NOT** be used for U.S. installations.

RXGW-B01 CHIMNEY ADAPTER:

See Installation Instructions for application limitations.

NOTES

Before proceeding with installation, refer to installation instructions packaged with each model, as well as complying with all Federal, State, Provincial, and Local codes, regulations, and practices.

**RHEEM
AIR CONDITIONING
DIVISION**

5600 Old Greenwood Road, Fort Smith, Arkansas 72908



"In keeping with its policy of continuous progress and product improvement, Rheem reserves the right to make changes without notice."