

Job: _____
 Engineer: _____
 Contractor: _____
 Prepared By: _____ Date: _____
 Indoor/Outdoor: _____

Raytherm® - Type WH

Water Heaters
 Commercial

Model 133

EFFICIENT

- ▶ 82% thermal efficiency – highest of any atmospheric water heater available today

THERMAL SHOCK PROOF

- ▶ Twenty-year warranty against thermal shock damage up to 150°F differential
- ▶ Maximum operating temperature: 210°F

LIGHTWEIGHT

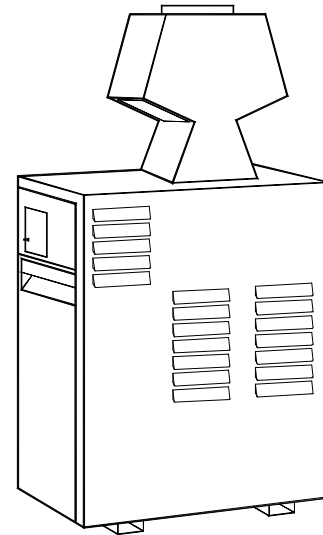
- ▶ A floor load of 70 lbs./sq. ft. or less

HIGH RECOVERY

- ▶ Cuts fuel costs substantially because the standby and radiation losses associated with tank-type water heaters are eliminated

LOW WATER OPERATING TEMPERATURE

- ▶ Operates with water temperature as low as 105°F without condensing



INDOOR MODEL ILLUSTRATED

Heat Exchanger

- ASME Inspected and Stamped 160 PSIG
- National Board Approved
- Bronze Headers
- Copper Fin Tubing
- ASME Steel Tube Sheet
- Silicone O-Rings
- 125 PSIG ASME Pressure Relief Valve
- Temperature and Pressure Gauge, Shipped Loose
- Four-pass Heat Exchanger
- Pump – Optional
 - Mounted, 1/8 HP, 120 VAC, 1Ø, 60 Hz

Controls

- 120V, 60Hz, 1 Ph Power Supply
- 120/24V Transformer
- 100% Pilot Shut-off/Lockout
- Electronic, Intermittent Ignition (IID) Pilot
- High Limit Control, Auto Reset – 200°F
- On/Off Switch
- Flue Gas Spillage Switch
- Economaster II Pump Time Delay
- Flame Roll-out Sensor

Gas Control Train

- Manual Main Gas Shut-off Cock
- Main Gas Pressure Regulator
- Redundant Safety Shut-off Valve
- Control Valve
- Firing Mode
 - On/Off (WH1)
 - Mechanical Modulation (WH2)
- Fuel
 - Natural Gas
 - Propane Gas
- Design Certified ANSI Z21.10.3

Construction

- Front Controls
- Stainless Steel Burners
- PolyTuf Powder Coat Finish
- Vent Selection
 - Drafthood (Indoor) – Option D-10
 - Stackless Top (Outdoor) – Option D-11
 - High-Wind Top (Outdoor) – Option D-13
- Base – Optional
 - Combustible Floor Shield – Option J-1
- CSA Low Lead Certified ≤ .25 Pb

Temperature Controls

- B-2 Single-Stage Tankstat (100-180°F)
- B-3 2-Stage Tankstat (100-180°F)
- B-26 2-Stage Digital (Loose)
- B-21 4-Stage Digital (Loose)

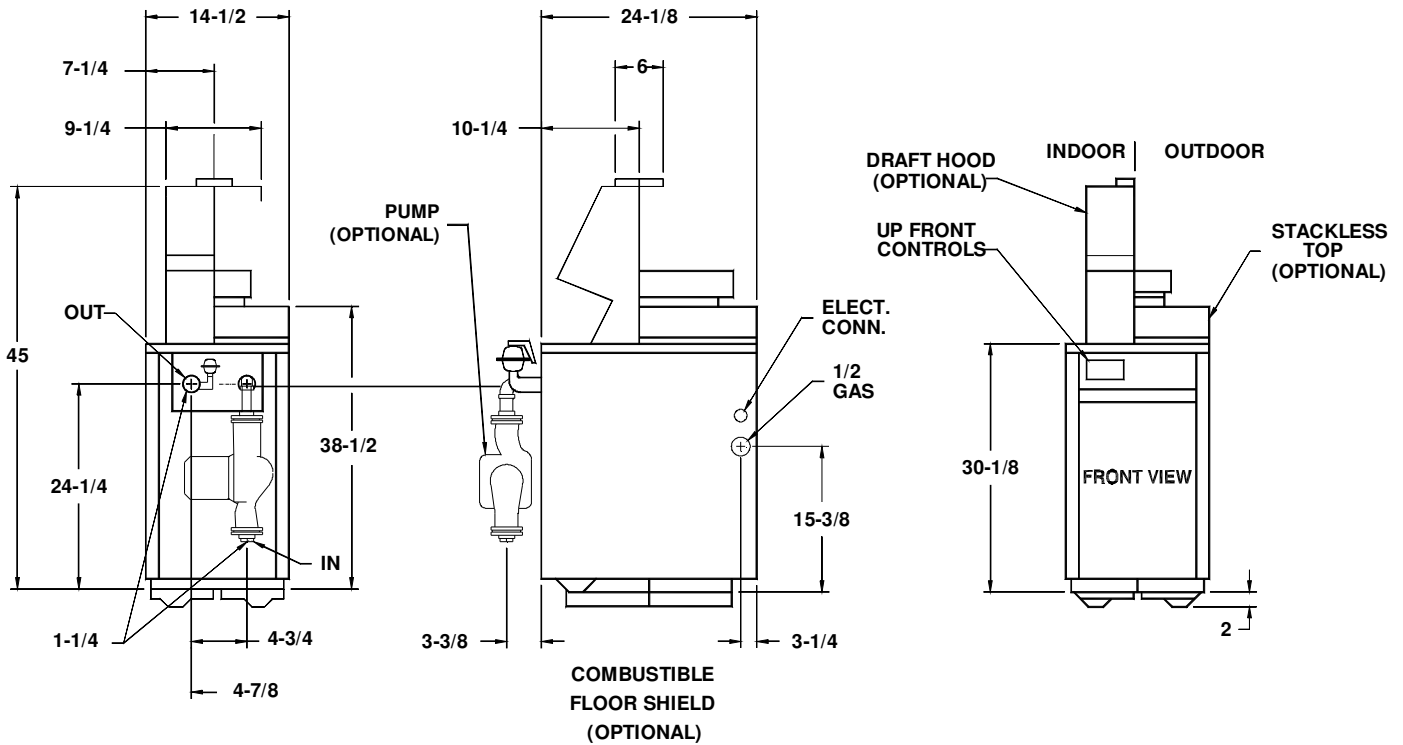
Additional Safety Controls

- _____
- _____



Raypak®
 A Rheem® Company

Raytherm – Type WH Model 133



Model No.	INDOOR		OUTDOOR	Approx. Shipping Weight (Lbs.)	
	Input MBTUH	Output MBTUH	Output MBTUH	Without Pump	With Pump
WH-133	136	112	109	160	186

NOTES: Dimensions are in inches.
Ratings shown are for elevations up to 2,000 feet. For elevations over 2,000 feet, reduce ratings 4% for each 1,000 feet above sea level.

HEATER RATES OF FLOW AND PRESSURE DROPS

10°ΔT		20°ΔT		30°ΔT		40°ΔT	
GPM	ΔP (ft)	GPM	ΔP (ft)	GPM	ΔP (ft)	GPM	ΔP (ft)
22	14.7	11	3.8	N/A	N/A	N/A	N/A

HEATER RECOVERY RATES (GPH)

	Temperature Rise						
	20°F	30°F	40°F	50°F	60°F	80°F	100°F
INDOOR	669	446	335	268	223	167	134
OUTDOOR	653	435	327	261	218	163	131