

Job: _____
 Engineer: _____
 Contractor: _____
 Prepared By: _____ Date: _____
 Model: _____ Indoor/Outdoor: _____

ADB™ - Type WH

Water Heater
 Model 500

100% Factory Fire Tested

Efficiency: 84%

Maximum Outlet Temperature Limit: 210°F

Minimum Non-Condensing Inlet Temperature: 105°F

Thermal Shock Proof Heat Exchanger

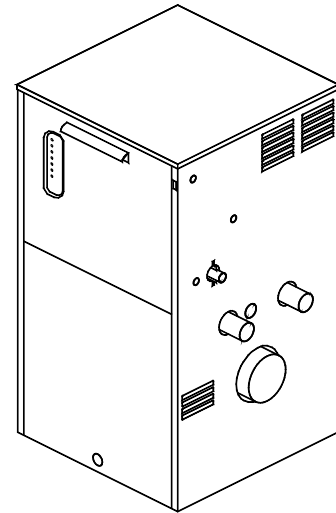
Footprint: Less than 5 ft²

Limited Twenty-Year Thermal Shock Warranty

Limited Ten-Year Heat Exchanger Warranty

Ten-Year Unconditional Burner Head Warranty

Operation Status Center and Full Diagnostic Panel



Heat Exchanger

- Bronze Headers
- ASME Inspected and Stamped
160 PSIG Working Pressure
- National Board Approved
- Finned Cupro-Nickel Tubes
- ASME Steel Tube Retainer
- Silicone High Temp O-Rings
- 125 PSIG ASME Pressure Relief Valve
- Temperature and Pressure Gauge,
Shipped Loose

Control

- 120V, 60Hz, Power Supply
- 120/24V 60Hz Transformer
- 100% Pilot Shut-off/Lockout
- Pilot: Electronic Intermittent Ignition
(I.I.D.)
- High Limit Control, Manual Reset
- High Limit Control, Auto Reset
- On/Off Switch
- Flow Switch (shipped loose)
- Blocked Vent Pressure Switch
- Combustion Air Proving Switch
- Time Delay Pump Off Control
- Central Point Wiring Diagnostics Panel

Burner

- Aerodynamically Stabilized
Non-Clog Burner
- Ultra-low NOx: Less than 30 PPM

Gas Train

- Fuel
 - Natural Gas
 - Propane
- Manual Gas Shut-off Valves
- Gas Pressure Regulator
- Safety Shut-off Valve
- Firing Control Valve
- Manual Low Gas Pressure Switch
- On/Off Firing Mode
- Design Certified ANSI Z21.10.3/
CSA 4.3

Construction

- Indoor/Outdoor Construction
- Front Controls Enclosed
- PolyTuf Powder Coat Finish
- Connections (Water, Electrical)
 - Rear – Standard
 - Right Side – Option A-8

Venting

- Vent Location
 - Rear – Standard
 - Right Side – Option Z-2
- Vent Termination Cap
 - Outdoor – Option D-11
 - Indoor, Horizontal – Option D-15
 - Indoor, Vertical (by others)

Temperature Controls

- B-2 Single-Stage Tankstat,
100-180°F
- B-3 2-Stage Tankstat, 100-180°F
- B-21 4-Stage TempTracker
Digital Controller
- B-26 2-Stage TempTracker
Digital Controller
- Y-241 Electronic Sequencer,
1-4 Stages
- Y-281 Electronic Sequencer,
5-8 Stages

Additional Safety Controls (Optional)

- A-8 Flow Switch, Mounted
- F-10 Low Water Cut-off, Remote
Probe
- S-2 Manual High Gas Pressure
Switch
- _____
- _____

Regulatory Agency Requirements

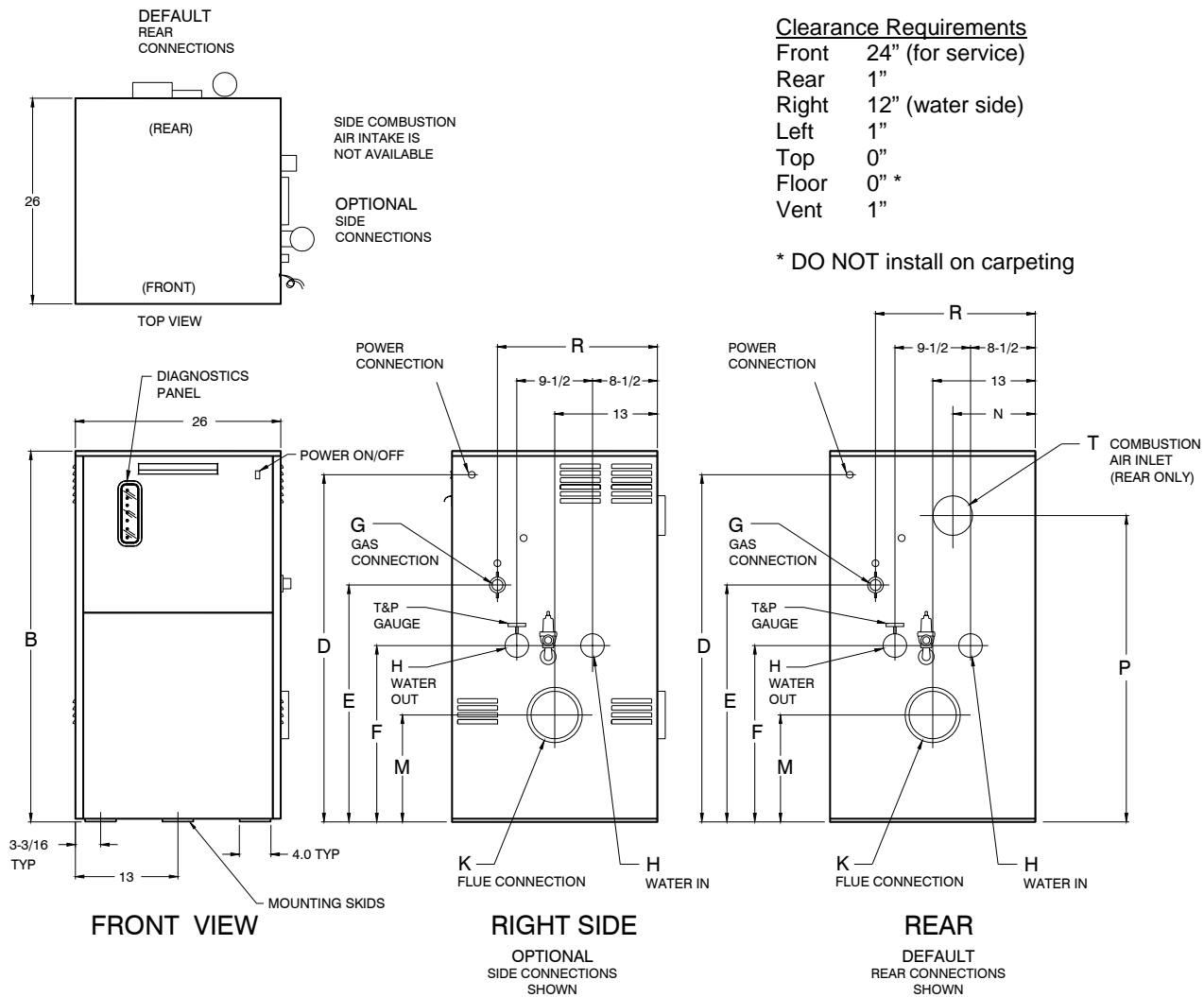
- C-5 Ignition Lockout Module
- _____

Other Equipment

- Condensing Heat Exchanger
- Pump
 - Soft Water (0-4 grains)
 - Medium Water (5-15 grains)
 - Hard Water (16+ grains)



ADB - Type WH Model 500



MODEL	MBTUH		B Height	D	E	F	G NPT	H NPT	K	M	N	P	R	T	Ship Weight Lbs.*	Foot- print Ft. ²	Amps*
	Input	Output															
WH 500	500	420	49	46	30	22-1/2	1	2	6	13-3/4	8-5/8	40	22-1/4	6	545	4-3/4	8

Dimensions are in inches.

Ratings shown for elevations up to 5,000 feet, natural or propane gas.

For installation at elevations over 5,000 feet, please consult factory.

* Pump not included

NOTE: For direct vent applications, please contact factory about relocating the pump.

MODEL	RATES OF FLOW AND PRESSURE DROPS								RECOVERY RATES						
	20°F ΔT		Max. Flow			Min. Flow			Temperature Rise at 84% Efficiency						
	GPM	ΔP (ft)	GPM	ΔP (ft)	ΔT	GPM	ΔP (ft)	ΔT	20°F	30°F	40°F	50°F	60°F	80°F	100°F
WH 500	42	2.6	84	8.8	10°F	30	1.6	28°F	2520	1680	1260	1008	840	630	504

Recommended natural gas pressure is 7 – 10.5" w.c.

Recommended propane gas pressure is 11 - 13" w.c.