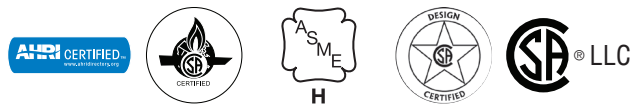
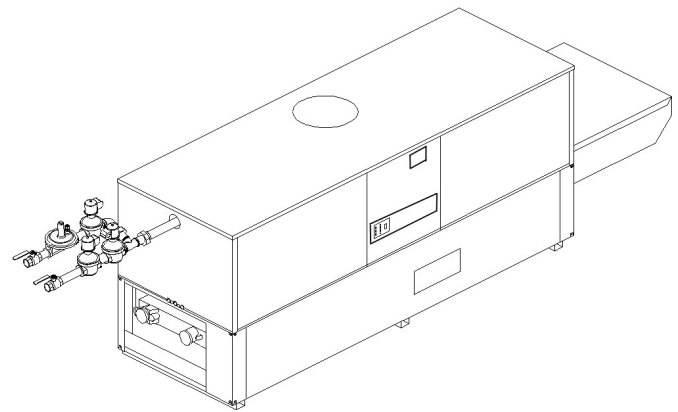




**Product Submittal for Hi Delta® FlexGas® - Type H Heating Boiler**  
**Models 992CD-2342CD**

Date: \_\_\_\_\_ Job: \_\_\_\_\_ Location: \_\_\_\_\_  
 Equipment Tags: \_\_\_\_\_ Engineer: \_\_\_\_\_ Contractor: \_\_\_\_\_  
 Model: \_\_\_\_\_ Notes: \_\_\_\_\_  
 Prepared by: \_\_\_\_\_ Indoor  Outdoor  Gas Type: Natural Gas and Propane  
 [Requires connections to both]

- 100% Factory fire-tested
- Thermal efficiency: 84%
- Versa IC® Controller with LCD display
- Maximum setpoint: 220°F (104.4°C)
- Maximum outlet temperature: 240°F (115.6°C)
- Minimum non-condensing inlet temperature: 105°F (40.6°C)
- Thermal shock proof heat exchanger
- Limited 20-year thermal shock warranty
- Limited 10-year closed loop heat exchanger warranty
- Full safety diagnostics with fault history
- PolyTuf Powder-coated cabinet
- No combustible floor shield required
- Fan-assisted
- Patented burner security blanket
- SCAQMD Rule 1146.2 certified, Low NOx < 20 ppm
- Cascade up to 8 heaters – no external sequencer required
- Cascade in parallel or sequential modulation modes
- Proudly assembled in the USA





# Product Submittal for Hi Delta® FlexGas® - Type H

Job: \_\_\_\_\_

## Features and Options

### Heat Exchanger

#### Headers

- Glass-lined cast iron (standard)
- A-1 Bronze
- ASME H-stamped; 160 PSIG MAWP
- National Board registered
- Fin tubing
  - Copper (standard)
  - A-3 Cupronickel
- ASME Steel tube sheet
- Silicone high temp. O-rings
- ASME Pressure relief valve
  - 60 PSIG (standard)
  - \_\_\_\_\_ PSIG (optional)
- T&P Gauge
- Water connections
  - Left handed (standard)
  - A-6 Right hand (optional)

#### Power

- 120V, 60Hz, 1Ø, Power supply
- 120/24V, 60Hz, Transformer

#### Control

- VERSA IC® Integrated control
- 100% Shut-off/lockout
- Hot surface ignition (HSI)
- Cascade up to 8 heaters
- Parallel and sequential modulation cascade modes
- Cascade flow offset control (only with optional flow meter)
- Water temperature sensors 10kΩ (2 mtd, 3 loose, 1 well)
- Ignition module
  - 3-Try (standard)
  - C-6 Single-try
- Remote flame sensor
- High limit, manual-reset, fixed 240°F (115°C)
- On/Off power switch
- Flow switch
- Blocked vent pressure switch
- Combustion air proving switch
- Programmable pump time delays
  - Heater
  - Recirculation
  - Enable/Disable

- LCD Display; status, fault and diagnostics
- Cold water protection function
  - CWR Variable-speed pump
  - CWS Three-way valve
- Modbus RTU BMS Port (Up to 115K baud rate)
  - B-85 – BMS Gateway – BACnet MS/TP, BACnet IP, N2 Metasys or Modbus TCP
  - B-86 – BMS Gateway – LonWorks

#### Gas Train

- Manual gas shutoff valve(s)
- Gas pressure regulator
- Safety shutoff valve
- Firing control valve
- Firing mode
  - H8 3-Stage (model 992CD only)
  - H9 4-Stage (models 1262CD-2342CD)
- Fuel (Requires connections to both)
  - Natural gas and propane (minimum grade HD-5)  
**Note:** Size 2002C is not offered as a FlexGas unit.
- Design Certified ANSI Z21.13/CSA 4.9

#### Construction

- Indoor/outdoor construction
- Front controls enclosed
- PolyTuf powder-coat finish
- CSA low-lead certified (≤ .25% Lead)

#### Venting

- Vent location
  - Top (standard)
  - D-14 Rear flue exhaust tee
- Vent termination
  - D-11 Vent termination, outdoor
  - D-15 Vent termination, sidewall (Cat III)
  - D-20 Vent termination vertical (Cat I)
- Combustion air
  - D-16 Air intake elbow (indoor only)
  - D-17 Inline air intake filter (used with Truseal™)
  - D-12 Barometric damper, single-acting
  - D-21 \*Truseal direct vent air intake (factory-installed)
  - D-22 Truseal™ direct vent air intake (field-installed) (\*requires D-17 inline filter kit)
  - D-23 Outdoor vent supports
  - D-37 Motorized combustion air damper

#### Options

- A-20 30 PSIG MAWP
- B-32 Outdoor air sensor
- B-65 Indirect tank aquastat control
- E-5 Alarm with 4" bell
  - Factory mounted  Shipped loose
- F-10 Low water cut-off, remote probe
- I-1 High limit, auto reset, 240°F (115.6°C) max
- I-2 High limit, manual-reset, 240°F (115.6°C) max
- I-5 High limit, manual-reset, 200°F (93.3°C) max
- I-13 High limit, auto reset, 200°F (93.3°C) max
- P\_\_ Pump: \_\_\_\_\_ HP, 120V, 1Ø, 60Hz
  - Cast Iron  Bronze
  - Mounted  Loose
  - Front  Rear
- P\_\_ Cold water start
- P\_\_ Cold water run
- S-2 High gas pressure switch, manual
- X-1 SureRack® Kit
- X-2 SureRack above ground support
- X-3 SureRack restraint brackets
- Z-4 T&P relief valve
- Z-9 Thermometer
- \_\_\_\_\_

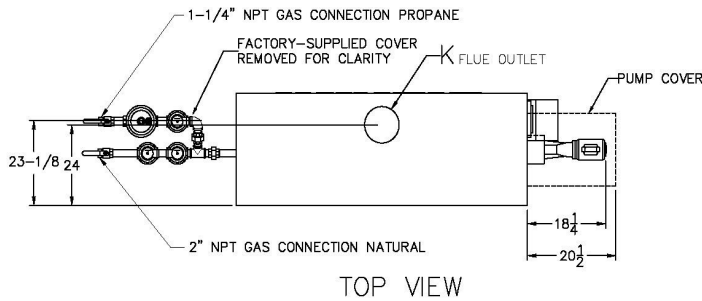
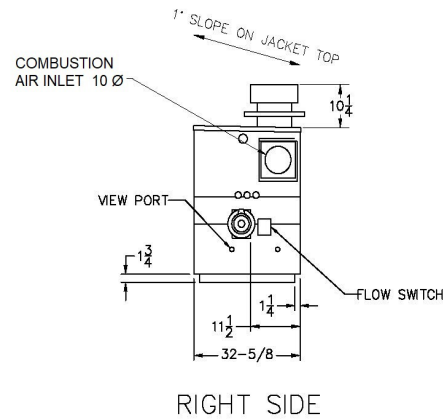
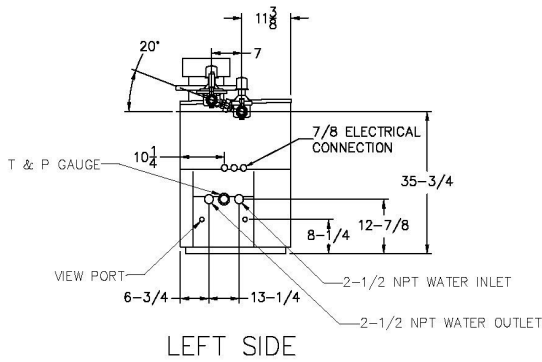
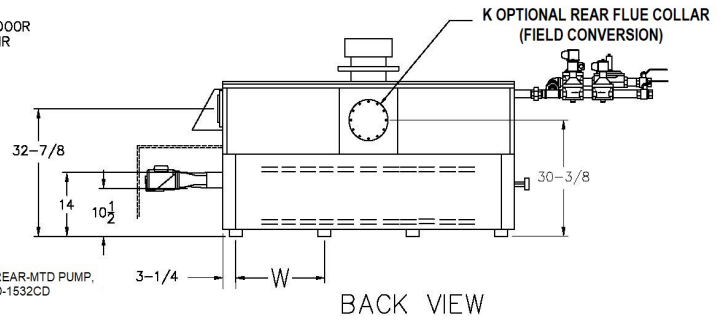
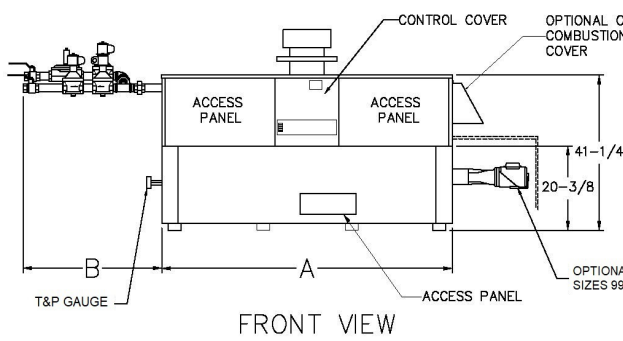
#### Additional Options or Accessories

\_\_\_\_\_

#### Multi-Boiler Temperature Controllers

- TempTracker Mod+ Hybrid
- B-36 2-4 Heaters
- B-37 5-10 Heaters
- B-38 11-16 Heaters
- B-39\* EMS 4-20 mA remote setpoint interface module
- B-62\* BACnet MS/TP Interface (\*requires B-36 to B-38)

Job: \_\_\_\_\_



NOTE: Pump location varies based on model and application

SPECIFICATIONS									Approx. Shipping Wt. (Lbs.)
Model	MBTUH (Kw)		Firing Stages	Dimensions: Inches (mm)					
	Input	Output		A Width	B	Flue Collar K	W	Amp. Draw*	
<input type="checkbox"/> 992CD	990 (290)	831 (244)	3	57-1/8 (1451)	41-3/8 (1051)	10 (254)	16-1/5 (411)	<12	930 (421.8)
<input type="checkbox"/> 1262CD	1260 (369)	1058 (310)	4	68-1/2 (1740)	41-1/2 (1054)	12 (305)	20-4/7 (522)	<12	1040 (471.7)
<input type="checkbox"/> 1532CD	1530 (448)	1285 (377)	4	79-7/8 (2029)	36 (914)	12 (305)	24-3/8 (619)	<12	1255 (569.2)
<input type="checkbox"/> 1802CD	1800 (528)	1512 (443)	4	91-1/8 (2315)	33-1/2 (851)	14 (356)	28-1/8 (714)	<12	1380 (625.9)
<input type="checkbox"/> 2072CD	2070 (607)	1738 (509)	4	102-1/2 (2604)	39 (991)	14 (356)	32 (811)	<12	1480 (671.2)
<input type="checkbox"/> 2342CD	2340 (686)	1965 (576)	4	113-7/8 (2892)	34 (864)	16 (406)	35-2/3 (906)	<12	1550 (702.9)

NOTES:  
 1. Dimensions are in inches.  
 2. Rates shown are for natural or propane gas, and elevations up to 4,500 feet. De-rate above 4,500 ft.  
 3. Required natural gas supply pressure is 5.6 - 10.5" WC. Required propane gas supply pressure is 11 - 13" WC.

\*Without pump



**Product Submittal for Hi Delta® FlexGas® - Type H**

Job: \_\_\_\_\_

RATES OF FLOW AND PRESSURE DROPS												
Model	20°F ΔT		30°F ΔT		39°F ΔT		Minimum Flow <sup>(1)</sup>			Maximum Flow		
	GPM (L/min)	ΔP (FT)	GPM (L/min)	ΔP (FT)	GPM (L/min)	ΔP (FT)	GPM (L/min)	ΔP (FT)	ΔT °F (°C)	GPM (L/min)	ΔP (FT)	ΔT °F (°C)
<input type="checkbox"/> 992CD	83 (315)	5.2	55 (208)	2.3	43 (163)	1.4	43 (163)	1.4	39 (21.6)	132 (500)	13.1	13 (7.2)
<input type="checkbox"/> 1262CD	106 (402)	9.6	71 (269)	4.3	54 (205)	2.5	54 (205)	2.5	39 (21.6)	132 (500)	14.8	16 (8.8)
<input type="checkbox"/> 1532CD	129 (489)	15.7	86 (326)	7.1	66 (250)	4.2	6.6 (250)	4.2	39 (21.6)	132 (500)	16.5	19 (10.5)
<input type="checkbox"/> 1802CD			101 (383)	10.7	78 (296)	6.3	78 (296)	6.3	39 (21.6)	132 (500)	18.3	23 (12.7)
<input type="checkbox"/> 2072CD			116 (440)	14.8	89 (337)	8.9	89 (337)	8.9	39 (21.6)	132 (500)	19.0	26 (14.4)
<input type="checkbox"/> 2342CD			132 (500)	21.1	101 (383)	12.7	101 (383)	12.7	39 (21.6)	132 (500)	21.4	30 (16.6)

**NOTES:**

[1] Basis for minimum flow is 40°F ΔT. Basis for maximum flow is 132 GPM.

1. Rear-mounted pumps may provide higher flow rates on smaller models than the system requirements.