

Job: _____

Engineer: _____

Contractor: _____

Prepared By: _____ Date: _____

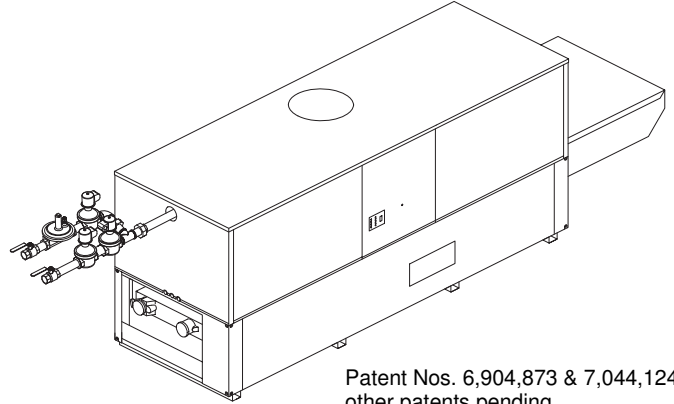
Model: _____ Indoor/Outdoor: _____

Hi Delta® FlexGas® - Type H

Dual-Fuel Hot Water Boilers Models 992BD-2342BD

MBTUH Input: _____

- Fast, Economical Natural-to-Propane Gas Switchover**
- 100% Factory Fire Tested**
- 84% Efficiency**
- Maximum Outlet Temperature: 230 °F**
- Minimum Non-Condensing Inlet Temperature: 105 °F**
- Thermal Shock Proof Heat Exchanger**
- Limited Twenty-Year Thermal Shock Warranty**
- Diagnostic Center with Fault History**
- PolyTuf Powder Coated Cabinet**
- No Combustible Floor Shield Required**
- Fan-Assisted Low NOx Burners**
- Patented Burner Security Blanket**



Patent Nos. 6,904,873 & 7,044,124;
other patents pending



Proudly Assembled in the USA

Heat Exchanger

- H Stamp
- Headers
 - Glass-Lined Cast Iron – Standard
 - Bronze – Option A-1
- ASME Inspected and Stamped
160 PSIG Working Pressure
- National Board Approved
- Fin Tubing
 - Copper – Standard
 - Cupro Nickel – Option A-3
- ASME Steel Tube Sheet
- Silicone High Temp. O-Rings
- ASME Pressure Relief Valve
 - 60 PSIG – Standard
 - _____ PSIG – Optional
- Temperature and Pressure Gauge
- Water Connections
 - Left – Standard
 - Right – Option A-6

Controls

- 120V, 60Hz, 1Ø Power Supply
- 120/24V 60Hz Transformer
- 100% Shut-Off/Lockout
- Hot Surface Ignition
- Remote Flame Sensor
- High Limit Control, Manual Reset
- On/Off Power Switch
- Manual Shut-Off, Front-Mounted
- Flow Switch
- Blocked Vent Pressure Switch
- Combustion Air Proving Switches
- Economaster Pump Time Delay
- Enable/Disable

Gas Train

- Manual Gas Shut-Off Valve(s)
- Combination Valve(s)
- Low Gas Pressure Switch, Manual
- Firing Mode
 - 3-Stage (H8): Model 992BD
 - 4-Stage (H9): Models 1262BD - 2342BD
- Natural/Propane Gas
- Gas Connection
 - Left – Standard
 - Right – Option Z-1
- Design Certified ANSI Z21.13/
CSA 4.9

Venting

- Vent Location
 - Top – Standard
 - Rear – Option D-14
- Vent Termination Cap
 - Outdoor D-11
 - Indoor, Horizontal D-15
 - Indoor, Vertical (by others)
- Combustion Air
 - In-Line Filter Kit (TruSeal only)
D-17
 - Air Intake Elbow D-16
- Extractor – Optional
 - By others
 - Not required

Construction

- Indoor/Outdoor Construction
- Enclosed Front Controls
- CSA Low Lead Certified ($\leq .25$ Pb)

Burner

- Ultra-Low NOx: Less than 20 PPM

Temperature Controls

- B-__ TempTracker Digital Controller, 2-Stage
- B-__ TempTracker Digital Controller, 4-Stage
- B-__ TempTracker Mod+ Hybrid (2-16 Boilers)
- B-60 Stage Interface

Options

- C-6 Ignition Module, Manual Reset
- D-21 TruSeal® Direct Vent
- F-10 Low Water Cut-Off, Remote Probe
- I-1 High Limit Control, Auto Reset
- P-__ Pump: _____ HP, 120V, 1Ø, 60Hz
 - Cast Iron Bronze
 - Mounted Loose
 - Front Rear
- P-__ Cold Water Start (See 2000.49)
- S-2 High Gas Pressure Switch, Manual
- X-1 SureRack™ Kit
- X-2 SureRack Add-on

Regulatory Agency Requirements



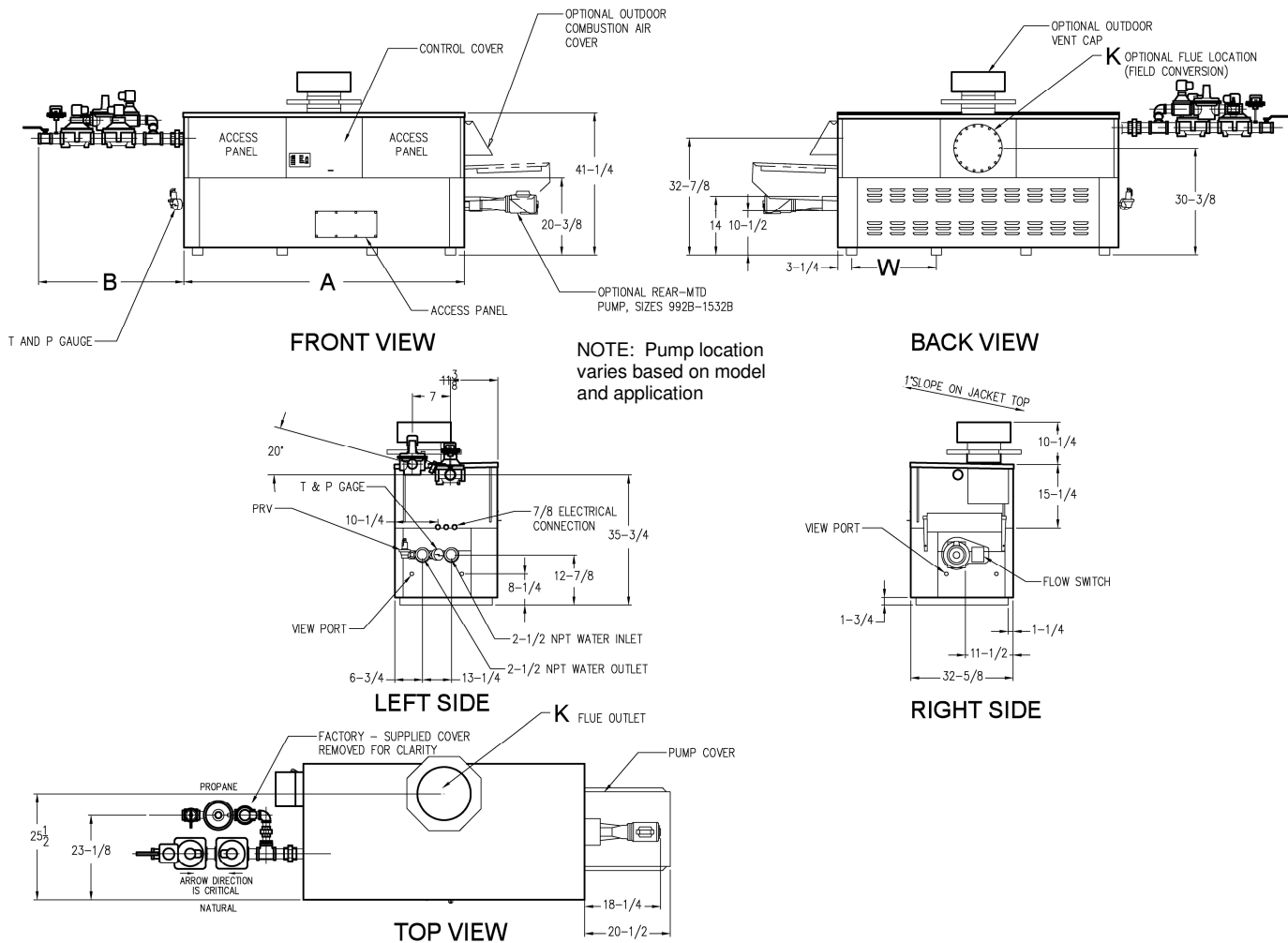
Raypak®

A Rheem® Company

Hi Delta FlexGas – Type H

Models 992BD-2342BD

Model _____



RATES OF FLOW AND PRESSURE DROPS

Model	20°F ΔT		30°F ΔT		Min. Flow			Max. Flow		
	GPM	ΔP (FT)	GPM	ΔP (FT)	GPM	ΔP (FT)	ΔT	GPM	ΔP (FT)	ΔT
☐ 992BD	84	5.6	56	2.5	42	1.5	40	132	14.0	13
☐ 1532BD	107	10.0	71	4.5	53	2.6	40	132	15.5	16
☐ 1802BD	130	16.0	86	7.1	65	4.1	40	132	16.5	20
☐ 2072BD	N/A	N/A	117	15.0	88	8.7	40	132	19.5	27
☐ 2342BD	N/A	N/A	132	21.0	99	12.0	40	132	21.0	30

Basis is 30 GPM or 40°F ΔT for minimum flow, 132 GPM for maximum flow.

Model	MBTUH		Firing Stages	A Width	B	K	T	W	Amp Draw*	Approx. Shipping Wt. (Lbs.)
	Input	Output								
☐ 992BD	990	832	3	57-1/8	41-3/8	10	10	16-3/16	<12	930
☐ 1262BD	1260	1058	4	68-1/2	41-1/2	12	10	20-9/16	<12	1040
☐ 1532BD	1530	1285	4	79-7/8	36	12	10	24-3/8	<12	1255
☐ 1802BD	1800	1512	4	91-1/8	33-1/2	14	10	28-1/8	<12	1380
☐ 2072BD	2070	1739	4	102-1/2	39	14	10	31-15/16	<12	1480
☐ 2342BD	2340	1966	4	113-7/8	34	16	10	35-11/16	<12	1550

*Without Pump

NOTES:

1. Dimensions are in inches.
2. Rates shown are for natural or propane gas, and elevations up to 4,500 feet. For installation above 4,500 feet, please contact manufacturer.
3. Required natural gas supply pressure is 7 - 10.5" WC. Required propane gas supply pressure is 11 - 13" WC.