

Job: _____
 Engineer: _____
 Contractor: _____
 Prepared By: _____ Date: _____
 Model: _____ Indoor/Outdoor: _____

XFyre® - Type H

Condensing Heating Boilers

Models 300A-850A

- Stainless Steel Water-tube Construction**
- 94% Thermal Efficiency at Full Rate**
- VERSA IC® Modulating Controller**
- LCD Status Display with Full Diagnostics and Fault Memory**
- Cascade up to Four Heaters – No External Sequencer Required**
- Modbus RTU BMS Port**
- Soft Start, Electronic Modulation, 5:1 Turndown**
- Maximum Outlet Water Temperature: 195°F**
- Maximum System Temperature: 190°F**
- 100% Factory Fire Tested**
- Zero Clearance to Combustibles**
- Indoor/Outdoor Construction Standard**
- PVC, CPVC, Centrotherm™ Polypropylene or Stainless Venting Certified¹**
- Meets 2012 NOx Requirements (< 20 ppm)**
- Limited Twenty-Five-Year Thermal Shock Warranty**
- Limited Ten-Year Heat Exchanger Warranty**



Proudly Assembled in the USA

Heat Exchanger

- All Stainless Steel Construction with Copper Connections
- Gasketless Heat Exchanger Design
- ASME H Stamped
160 PSIG Working Pressure
- National Board Approved
- ASME Pressure Relief Valve, Loose
 - 45 PSIG – Standard (300 & 400)
 - 60 PSIG – Standard (500 – 850)
 - ___ PSIG – Optional
- Temperature and Pressure Gauge, Shipped Loose

Control

- 120V, 60Hz, 1Ø, Power Supply
- VERSA IC with LCD display
- Outdoor Reset with Indirect Priority
- 0-10 VDC input for BMS
- Cascade up to 4 boilers
- Remote Flame Sensor
- High Limit, Manual Reset, Fixed, 200°F
- Alarm Dry Contact Connection
- On/Off Power Switch
- Flow Switch
- Blocked Vent Pressure Switch
- Boiler, DHW & System Pump Contacts
- Water Temperature Sensors (5)10kΩ (3 shipped loose)

Burner

- Spark Ignition (DSI)

- Ultra-Low NOx: Less than 20 PPM

Gas Train

- Fuel
 - Natural Gas
 - Propane
- Dual-Seat Combination Valve
- H7 Electronic Modulating Firing Mode

Construction

- Indoor/Outdoor Construction
- Front Controls Enclosed
- PolyTuf Powder Coat Finish
- Rear Connections (Electrical, Gas, Vent, Combustion Air)
- Top Connections (Water)
- Design Certified ANSI Z21.13/CSA 4.9
- Combustion Air Filter
- Condensate Trap
- CSA Low Lead Certified (≤.25% Pb)

Venting (PVC-CPVC-Centrotherm™ Polypropylene - Stainless¹)

- Vent Termination
 - D-11 Outdoor
 - D-15 Indoor, Horizontal
 - D-33 Polypropylene Adapter
- Extractor - Optional
 - By others
 - Not required

Multi-Boiler System Controllers

- B-36 TempTracker Mod+ Hybrid Digital Controller, 2-4 Boilers, OA Reset
- B-37 TempTracker Mod+ Hybrid Digital Controller, 5-10 Boilers, OA Reset
- B-38 TempTracker Mod+ Hybrid Digital Controller, 11-16 Boilers, OA Reset

Options

- B-31 Well Assembly
- B-32 Outdoor Air Sensor (1) 10kΩ
- D-21 TruSeal® Combustion Air Inlet (Mounted)
- D-22 TruSeal® Combustion Air Inlet (Loose)
- F-10 Low Water Cut-Off, Remote Probe
- P-___ Pump: ___HP, 120V, 1Ø, 60Hz
 - Cast Iron
 - Bronze/SS
- S-1/S-2 High/Low Gas Pressure Switch, Manual Reset
- Z-12 Condensate Neutralizer Kit

Regulatory Agency Requirements

- _____

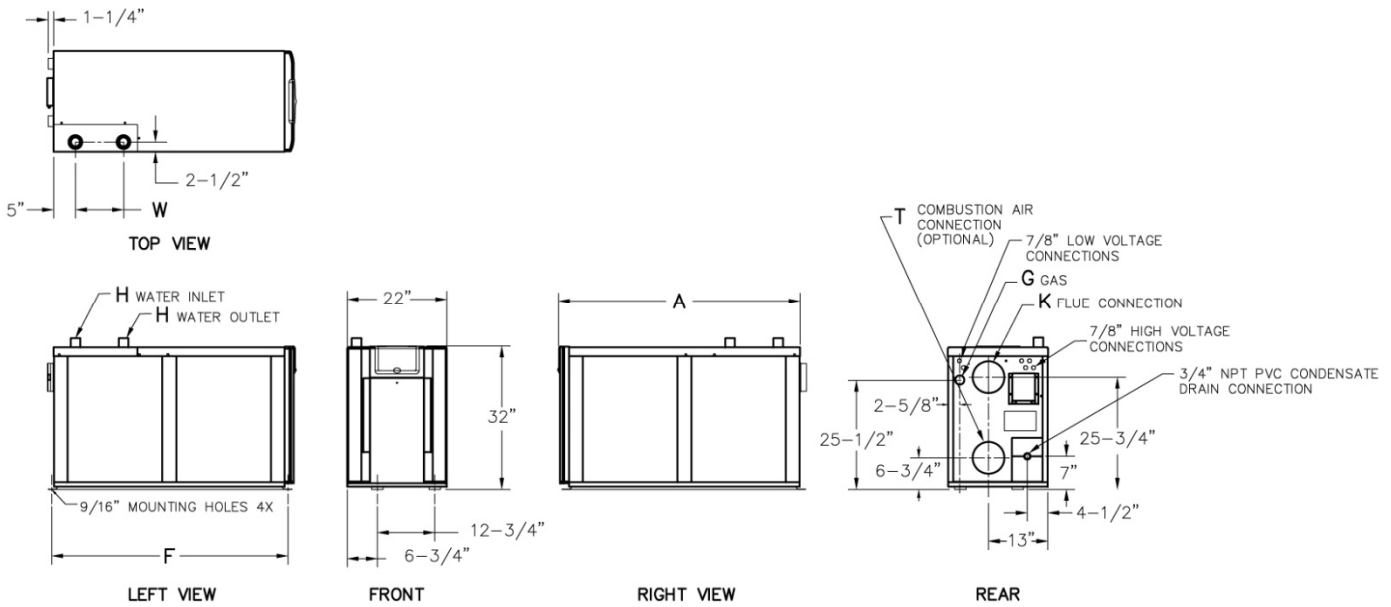


Note 1: PVC venting on Models H7-700A and H7-850A is acceptable with system temperatures below 130°F only. See I & O Manual Cat. 1000.65

Raypak®
 A Rheem Company

XFyre® – Type H Models 300A-850A

Model _____



Model (H7-)	MBTUH		Dimensions (in.)						
	Input	Output	A Length	F Mounting	G NPT	H NPT	K Flue Ø	T C/A Ø	W (Water)
☐ 300A	300	282	28-1/4	27-9/16	3/4	1-1/2	4	4	8-1/2
☐ 400A	399	375	30-3/4	32-5/16	1	2	4	4	7
☐ 500A	500	470	37-1/4	36-9/16	1	2	4	4	8-1/2
☐ 700A	700	658	47-3/4	49-5/16	1-1/4	2	6	6	10-5/8
☐ 850A	850	799	54-1/4	53-9/16	1-1/4	2	6	6	10-5/8

	CLEARANCES (in.)	
	Certified Minimum	Service Minimum
Front	24	24
Rear	24	24
Right	0	0
Left	0	0
Top	12	24
Floor	0	--
Vent	1	--

RATES OF FLOW AND PRESSURE DROPS												
Model (H7-)	20°F ΔT		30°F ΔT		35°F ΔT		Min Flow			Max Flow		
	GPM	ΔP**	GPM	ΔP**	GPM	ΔP	GPM	ΔP**	ΔT	GPM	ΔP**	ΔT
☐ 300A	28	17	19	8	16	6	14	5	39	36	28	16
☐ 400A	38	18	25	7	21	5	19	4	39	47	29	16
☐ 500A	47	16	31	7	27	5	24	4	39	56	23	17
☐ 700A	66	30	44	13	38	9	34	7	39	70	34	19
☐ 850A*	80	40*	53	17	46	12	41	10	39	80	40	20

* Closed systems only

** Connected plumbing pressure drops are not included.

Model (H7-)	Amps*	Foot-Print (ft²)	Ship Weight (lbs.)
☐ 300A	3	4.3	410
☐ 400A	4	4.7	465
☐ 500A	4	5.7	505
☐ 700A	5	7.3	580
☐ 850A	5	8.3	580

* Current draw is for heater only.
(Supply breaker must have delayed trip.)