

COMMERCIAL
XPAK WALL HUNG HYDRONIC BOILER

CATALOG NO. 9300.92
Effective: 10-15-14
Replaces: NEW

RAYPAK ILLUSTRATED PARTS LIST

MODEL SIZE: 85 & 120

MODEL TYPE: XPAK NATURAL GAS & LP

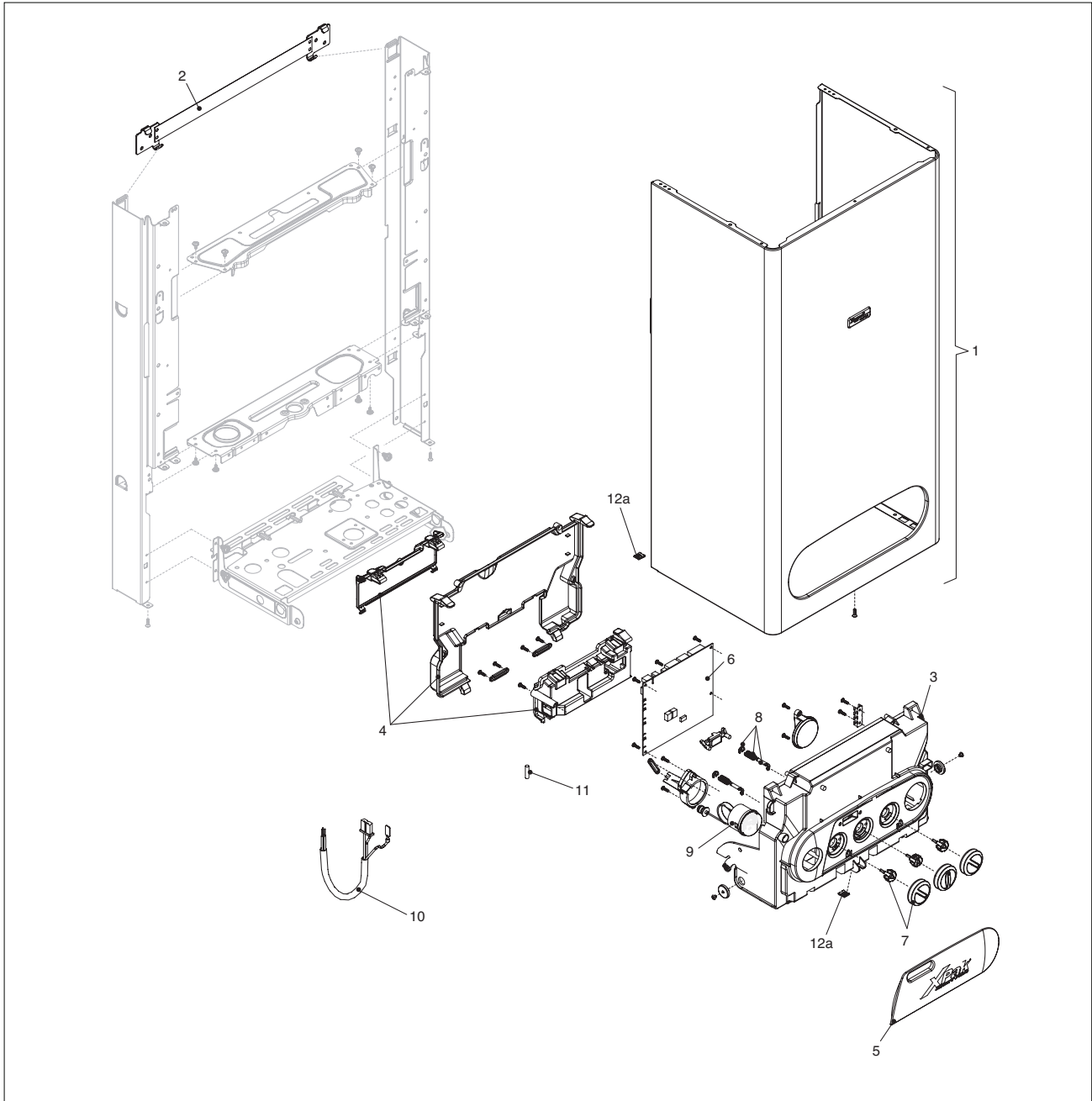
DATE OF MANUFACTURE: 10-01-2009 THRU CURRENT

THE PARTS LISTED ARE FOR STANDARD EQUIPMENT FOR THIS MODEL TYPE. RAYPAK RESERVES THE RIGHT TO SUBSTITUTE, DELETE OR CHANGE ANY PART WITHOUT NOTIFICATION. THE ADDITION OF OPTIONS MAY ALSO CHANGE SOME OF THE PARTS. ORDER REPLACEMENT PARTS FROM ACTUAL HEATER COMPONENTS.

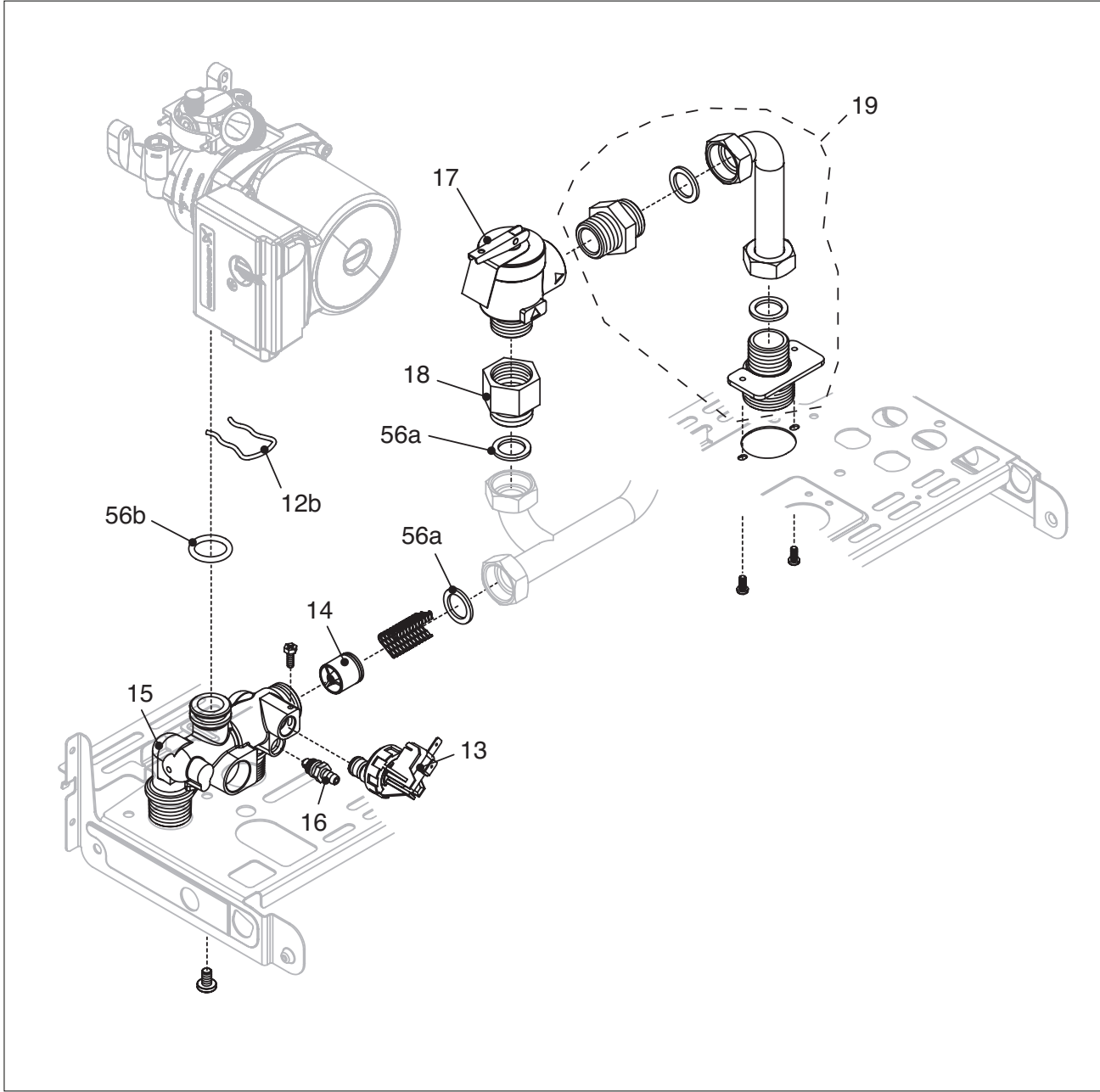


Raypak, Inc., 2151 Eastman Avenue, Oxnard, CA 93030
(805) 278-5300 Fax (800) 872-9725
Litho In U.S.A.

Drawing 1



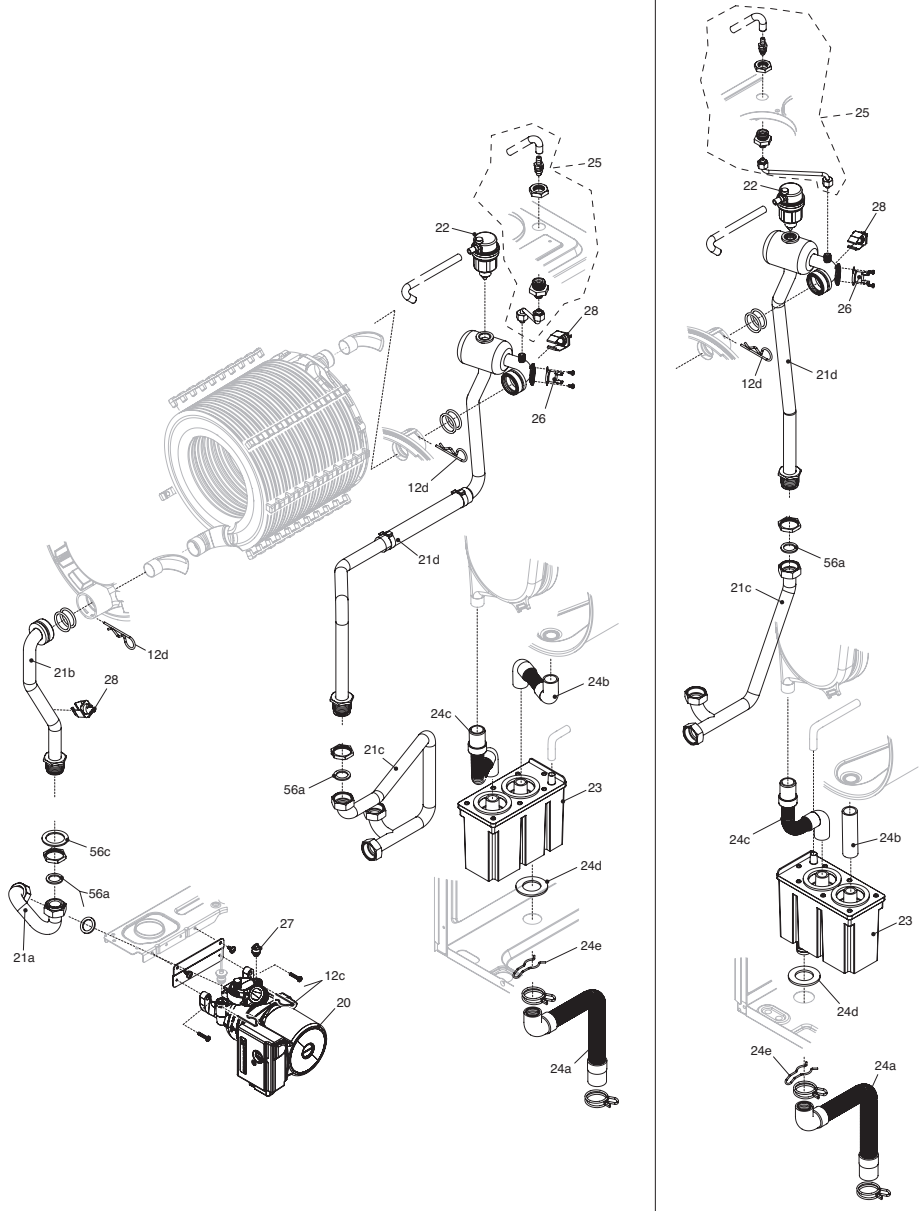
Drawing 2



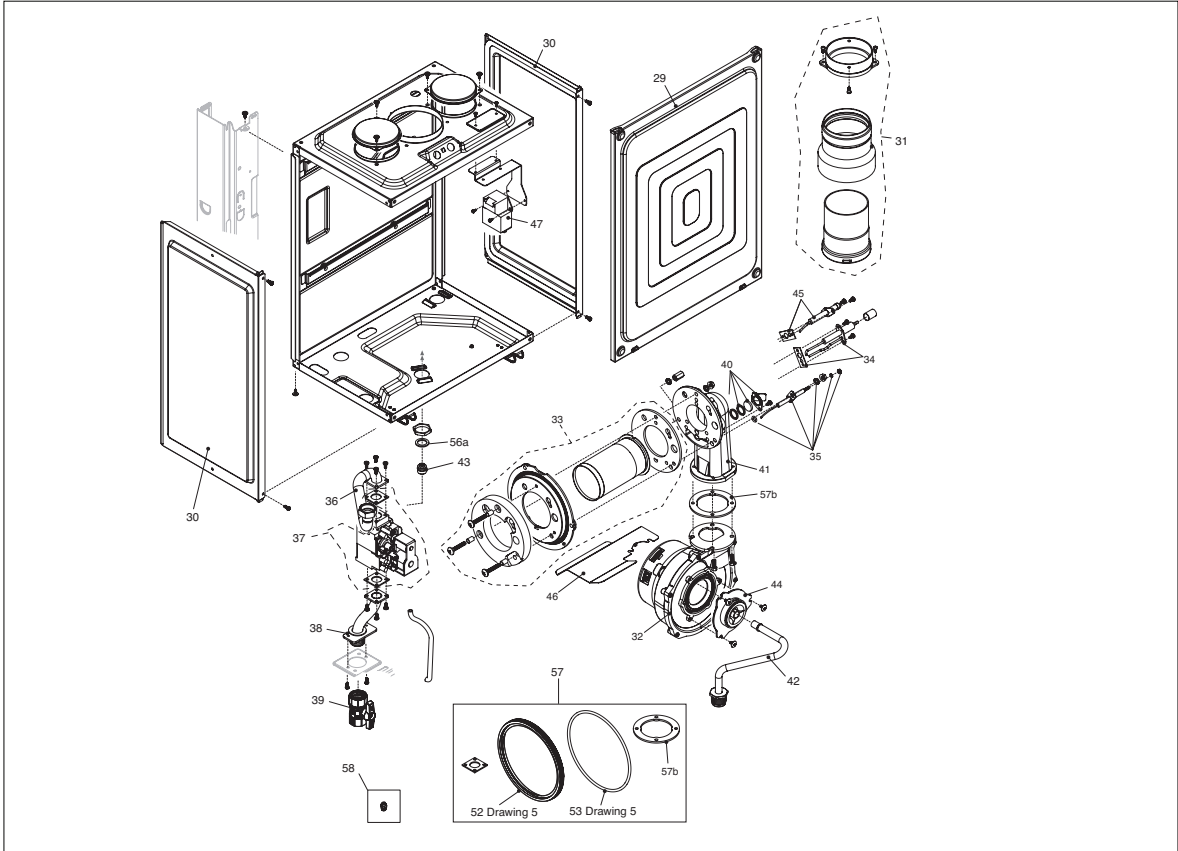
Drawing 3

XPAK 85

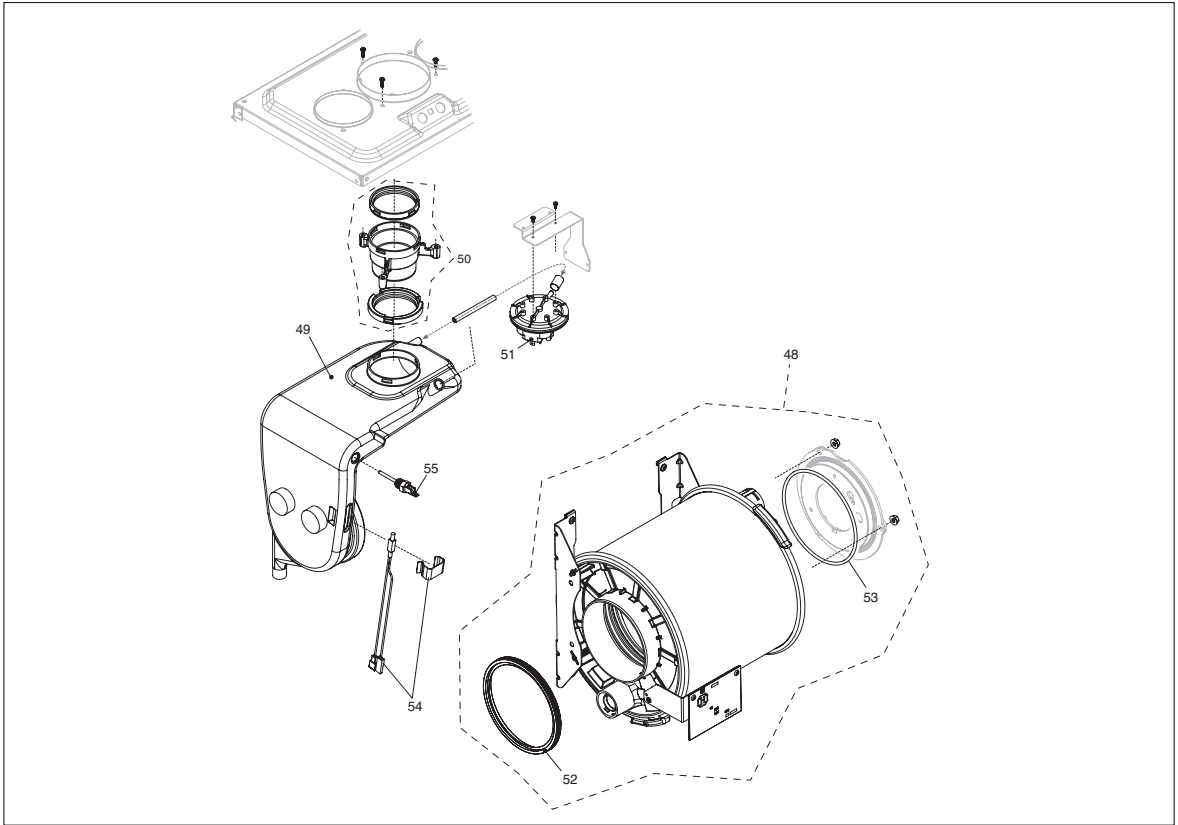
XPAK 120



Drawing 4



Drawing 5



CALL OUT	DESCRIPTION	XPak85	XPak120
Electric/Case Components		See Drawing #1	
1	Jacket Front	012831F	012832F
2	Boiler Mounting Bracket	013004F	013004F
3	Control Panel	012829F	012829F
4	Control Panel Cover	012827F	012827F
5	Control Panel Door	012833F	012833F
6	PC Board	012828F	012828F
7	Control Knob	012830F	012830F
8	Control Panel Hinge	012834F	012834F
9	Pressure Gauge	012826F	012826F
10	Wire Harness Kit - (Includes Complete Set of Boiler Harnesses)	012836F	012999F
11	Control Panel Fuse Kit - (Includes Complete Set of Fuses)	013003F	013003F
12	Retainer Clip Kit - (Includes 12a {20pcs}, 12b {1 pc}, 12c {10 pcs} and 12d {10 pcs})	013011F	013011F
Hydraulic Components - 1		See Drawing #2	
13	Water Pressure Switch	013005F	013005F
14	Bypass Valve	013006F	013007F
15	Distribution Header	013008F	013008F
16	Vent Plug	013009F	013009F
17	PRV - 45#	013012F	013012F
18	PRV Adapter	013013F	013013F
19	PRV Discharge Plumbing Kit	013010F	013010F
Hydraulic Components - 2		See Drawing #3	
20	Pump	013014F	013015F
21	Plumbing Kit - (Includes 21a, 21b, 21c and 21d)	013016F	013017F
22	Air Vent	013018F	013018F
23	Condensate Reservoir	013019F	013019F
24	Condensate Plumbing Kit - (Includes 24a, 24b, 24c, 24d and 24e)	013020F	013021F
25	Air Venting Plug Kit	013022F	013023F
26	High Limit	013024F	013024F
27	Pump Plug	013025F	013025F
28	Water Detector	013026F	013026F
Burner Components - Air Box		See Drawing #4	
29	Air Chamber Access Panel	013037F	013038F
30	Air Chamber Side	013027F	013027F
31	Intake Air/Flue Adapters	013040F	013040F
32	Combustion Air Blower	013028F	013028F
33	Burner Assembly	013029F	013029F
34	Igniter	013030F	013030F
35	Condensate Electrode Kit	013031F	013031F
36	Outlet Gas Manifold	013032F	013033F
37	Gas Valve Kit	013034F	013034F
38	Inlet Gas Manifold	013035F	013035F
39	Gas Shut-Off Valve	013036F	013036F
40	Burner Observation Port Kit	013039F	013039F
41	Air/Gas Manifold	013041F	013041F
42	Manifold Gas/Blower Inlet	013042F	013064F
43	Gas Orifice - Nat	013043F	013044F
43	Gas Orifice - Pro	013045F	013046F
44	Combustion Air Mixer	013047F	013048F
45	Flame Sensor	013049F	013049F
46	Blower Heat Shield	013050F	013050F
47	Ignition Transformer	013051F	013051F
Combustion Chamber Components - Flue Drain		See Drawing #5	
48	Heat Exchanger Assembly	013054F	013055F
49	Flue Exhaust Condensate Collector	013056F	013057F
50	Flue Exhaust Condensate Collector Adapter	013058F	013058F
51	Air Pressure Switch	013059F	013059F
52	Outlet Heat Exchanger Seal Gasket	013060F	013060F
53	Inlet Heat Exchanger Seal Gasket	013061F	013061F
54	High Limit	013062F	013062F
55	Flue Sensor	013063F	013063F
56	Water Gasket Kit - (Includes 56a, 56b and 56c - 10 pcs ea.)	013000F	013000F
57	Flue Exhaust/Gas Gasket Kit - (Includes 57a and 57b)	013001F	013001F
58	Nat to Pro Gas Conversion Kit	013052F	013053F

For gas conversions, consult the factory for information.



Registered Quality Management System

www.raypak.com