

Job: _____

Hi Delta® FlexGas® - Type WH

Engineer: _____

Dual-Fuel Water Heaters
Models 992BD-2342BD

Contractor: _____

Prepared By: _____ Date: _____

Model: _____ Indoor/Outdoor: _____ MBTUH Input: _____

Fast, Economical Natural-to-Propane Gas Switchover

100% Factory Fire Tested

Efficiency: 85%

Maximum Outlet Temperature: 200 °F

Minimum Non-Condensing Inlet Temperature: 105 °F

Thermal Shock Proof Heat Exchanger

Limited Twenty-Five-Year Thermal Shock Warranty

Limited Five-Year Heat Exchanger Warranty

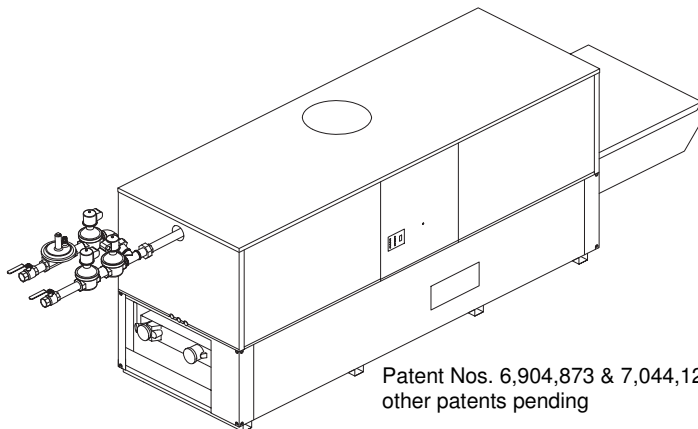
Diagnostic Center with Fault History

PolyTuf Powder Coated Cabinet

No Combustible Floor Shield Required

Fan-Assisted

Patented Burner Security Blanket



Patent Nos. 6,904,873 & 7,044,124;
other patents pending



Proudly Assembled in the USA

Heat Exchanger

- HLW Stamp
- Headers
 - Bronze – Standard
 - Glass-Lined Cast Iron – Option A-2
- ASME Inspected and Stamped
160 PSIG Working Pressure
- National Board Approved
- Fin Tubing
 - Copper – Standard
 - Cupro Nickel – Option A-3
- ASME Steel Tube Sheet
- Silicone High Temp. O-Rings
- ASME Pressure Relief Valve
 - 125 PSIG – Standard
 - A6 – 150 PSIG – Optional
- Temperature and Pressure Gauge
- Water Connections
 - Left – Standard
 - Right – Option A-6

Controls

- 120V, 60Hz, 1Ø Power Supply
- 120/24V 60Hz Transformer
- 100% Shut-Off/Lockout
- Hot Surface Ignition
- Remote Flame Sensor
- High Limit Control, Manual Reset
- On/Off Power Switch
- Manual Shut-Off, Front-Mounted
- Flow Switch
- Blocked Vent Pressure Switch
- Combustion Air Proving Switches
- Economaster Pump Time Delay
- Enable/Disable

Gas Train

- Manual Gas Shut-Off Valve(s)
- Low Gas Pressure Switch - Manual
- Safety Shut-Off Valve
- Firing Control Valve
- Firing Mode
 - 3-Stage: Model 992BD
 - 4-Stage: Models 1262BD - 2342BD
- Natural/Propane Gas
- Gas Connection
 - Left – Standard
 - Right – Option Z-1
- Design Certified - ANSI Z21.10.3/
CSA 4.3

Construction

- Indoor/Outdoor Construction
- Enclosed Front Controls
- CSA Low Lead Certified ≤ .25% Lead

Venting

- Vent Location
 - Top – Standard
 - Rear – Option D-14
- Vent Termination Cap
 - Outdoor D-11
 - Indoor, Horizontal D-15
 - Indoor, Vertical (by others)
- Combustion Air
 - In-Line Filter Kit (TruSeal only) D-17
 - Air Intake Elbow D-16
- Extractor – Optional
 - By others
 - Not required

Burner

- Ultra-Low NOx: Less than 20 PPM

Temperature Controls

- B-2 Tankstat, Single-Stage (100-200 °F)
- B-3 Tankstat, 2-Stage (100-200 °F)
- B-21 TempTracker Digital Controller, 4-Stage
- B-26 TempTracker Digital Controller, 2-Stage (Mtd)
- B-_____ TempTracker Mod+ Hybrid, (up to 16 heaters)
- B-60 Stage Interface Card

Options

- C-6 Ignition Module, Manual Reset
- D-21 TruSeal® Direct Vent
- F-10 Low Water Cut-Off, Remote Probe
- I-1 High Limit Control, Auto Reset
- P-___ Pump: _____ HP, 120V, 1Ø, 60Hz
Water Hardness: _____ GPG
 - Bronze
 - Mounted Loose
 - Front Rear
- P-_____ Cold Water Run (See 1000.19)
- S-2 High Gas Pressure Switch, Manual
- X-1 SureRack™ Kit
- X-2 SureRack Add-on

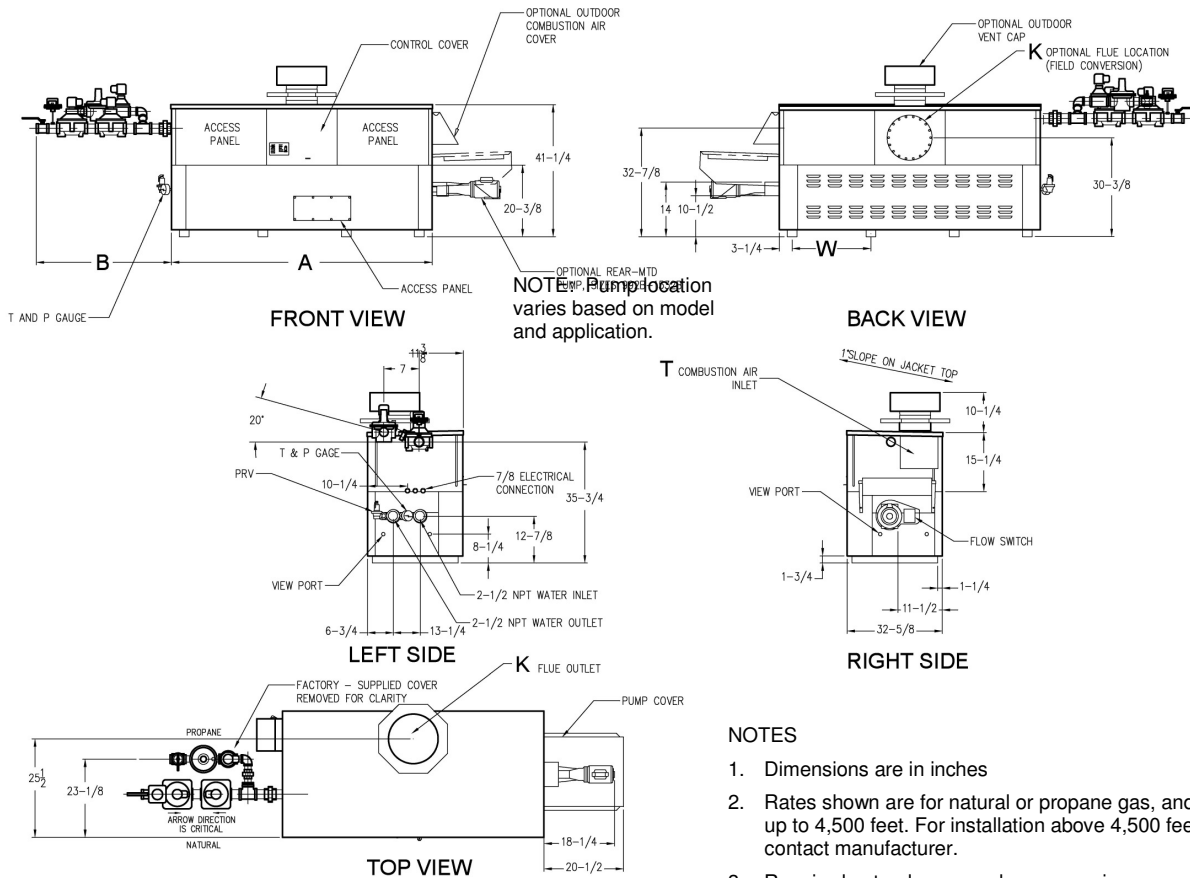
Regulatory Agency Requirements



Raypak
A Rheoss® Company

Hi Delta FlexGas – Type WH Models 992BD-2342BD

Model _____



SPECIFICATIONS

Model	MBTUH		Firing Stages	A Width	B	K	T	W	Amp Draw*	Approx. Shipping Wt. (Lbs.)
	Input	Output								
☐ 992BD	990	842	3	57-1/8	41-3/8	10	10	16-13/16	<12	930
☐ 1262BD	1260	1071	4	68-1/2	41-1/2	12	10	20-9/16	<12	1040
☐ 1532BD	1530	1301	4	79-7/8	36	12	10	24-3/8	<12	1255
☐ 1802BD	1800	1530	4	91-1/8	33-1/2	14	10	28-1/8	<12	1380
☐ 2072BD	2070	1760	4	102-1/2	39	14	10	31-15/16	<12	1480
☐ 2342BD	2340	1989	4	113-7/8	34	16	10	35-11/16	<12	1550

NOTES

1. Dimensions are in inches
2. Rates shown are for natural or propane gas, and elevations up to 4,500 feet. For installation above 4,500 feet, please contact manufacturer.
3. Required natural gas supply pressure is 7 - 10.5" WC. Required propane gas supply pressure is 11 - 13" WC.

*Without Pump

Model	RATES OF FLOW AND PRESSURE DROPS										RECOVERY RATES (GPH)								
	20°T ΔT		30°T ΔT		Min. Flow			Max. Flow			Temperature Rise (°F)								
	GPM	ΔP (ft.)	GPM	ΔP (ft.)	GPM	ΔP (ft.)	ΔT	GPM	ΔP (ft.)	ΔT	20°	30°	40°	50°	60°	70°	80°	90°	100°
☐ 992BD	85	5.7	N/A	N/A	60	2.7	28	132	13.1	13	5100	3400	2550	2040	1700	1457	1275	1133	1020
☐ 1262BD	107	10.2	71	4.4	71	4.4	30	132	14.8	16	6491	4327	3245	2596	2164	1855	1623	1442	1298
☐ 1532BD	130	16.2	87	7.2	87	7.2	30	132	16.5	20	7882	5255	3941	3153	2627	2252	1970	1752	1576
☐ 1802BD	N/A	N/A	103	11.0	102	10.8	30	132	18.3	23	9273	6182	4636	3709	3091	2649	2318	2061	1855
☐ 2072BD	N/A	N/A	118	15.3	117	15.0	30	132	19.0	27	10664	7109	5332	4265	3555	3047	2666	2370	2133
☐ 2342BD	N/A	N/A	132	21.0	132	21.4	30	132	21.4	30	12055	8036	6027	4822	4018	3444	3014	2679	2411

Basis is 60 GPM or 30°F ΔT for minimum flow, 132 GPM for maximum flow.

Raypak, Inc. ▪ 2151 Eastman Avenue, Oxnard, CA 93030 ▪ (805) 278-5300 ▪ Fax (800) 872-9725 ▪ www.raypak.com