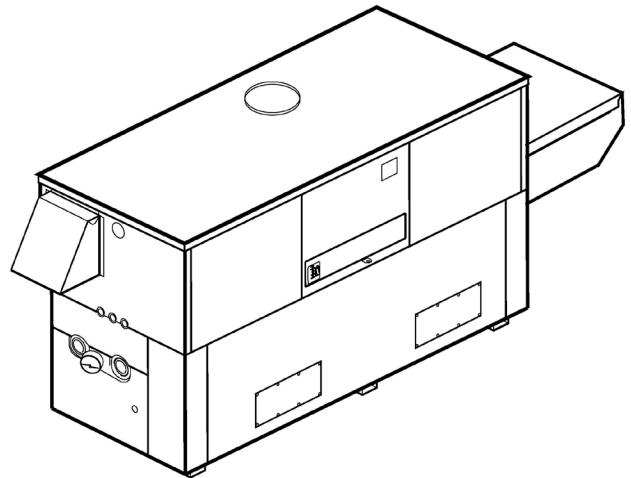




**Product Submittal for Hi Delta®- Type H
Heating Boiler
Models 992C-2342C**

Date: _____ Job: _____ Location: _____
Equipment Tags: _____ Engineer: _____ Contractor: _____
Model: _____ Notes: _____
Prepared by: _____ Indoor Outdoor Gas Type: Natural Gas Propane

- 100% Factory fire-tested
- Thermal efficiency: 84%
- Versa IC® Controller with LCD display
- Maximum setpoint: 220°F (104°C)
- Maximum outlet temperature: 240°F (116°C)
- Minimum non-condensing inlet temperature: 105°F (41°C)
- Thermal shock proof heat exchanger
- Limited 20-year thermal shock warranty
- Limited 5-year heat exchanger warranty
- Full safety diagnostics with fault history
- Polytuf powder-coated cabinet
- No combustible floor shield required
- Fan-assisted
- Patented burner security blanket
- Cascade up to 8 heaters – no external sequencer needed
- Cascade in parallel or sequential modulation modes
- SCAQMD Rule 1146.2 certified, Low NOx < 20 ppm (992C-2002C)
- Proudly assembled in the USA



Features and Options

Heat Exchanger

- Headers
 - Glass-lined cast iron (standard)
 - A-1 Bronze (optional)
- ASME H-Stamped; 160 PSIG MAWP
- National Board registered
- Fin tubing
 - Copper (standard)
 - A-3 Cupronickel
- ASME steel tube sheet
- Silicone high temp. O-rings
- ASME Pressure relief valve
 - 60 PSIG (standard)
 - ____ PSIG (optional)
- T&P Gauge
- Water connections
 - Left hand (standard)
 - A-6 Right hand

Power

- 120V, 60Hz, 1Ø, Power supply
- 120/24V, 60Hz, Transformer

Control

- Versa IC® Integrated control
- 100% Shutoff/lockout
- Hot Surface Ignition (HSI)
- Cascade up to 8 heaters
- Parallel and sequential modulation cascade modes
- Water temperature sensors 10kΩ (2 mtd, 3 loose, 1 well)
- Ignition Module
 - 3-Try (standard)
 - C-6 Single-try
- Remote flame sensor
- High limit, manual reset, fixed 240°F (104°C)
- On/off power switch
- Flow switch
- Blocked vent pressure switch
- Combustion air proving switch
- Programmable pump time delays
- Pump outputs
 - Boiler
 - System-pilot duty
 - DHW indirect-pilot duty

- Enable/disable
- LCD Display; status, fault and diagnostics
- Modbus RTU BMS Port (Up to 115K baud rate, see Manual 241515)
 - B-85 – BMS Gateway – BACnet MS/TP, BACnet IP, N2 Metasys or Modbus TCP
 - B-86 – BMS Gateway – LonWorks
- Cold water protection function
 - CWR Variable-speed pump
 - CWS Proportional valve

Gas Train

- Manual gas shutoff valve(s)
- Combo valve(s)
- Firing mode
 - H8 3-Stage (model 992C only)
 - H9 4-Stage (models 1262C-2342C)
- Fuel
 - Natural gas
 - Propane gas (minimum grade HD-5, excludes model 2002C)
 - G-20 4" W.C. NAT supply pressure
- Design Certified - ANSI Z21.13/CSA 4.9

Construction

- Indoor/outdoor construction
- Front controls enclosed
- PolyTuf Powder Coat Finish CSA Low-Lead Certified (≤ .25% Lead)

Venting

- Vent location
 - Top (standard)
 - D-14 Rear flue exhaust tee
- Vent termination cap
 - D-11 Vent termination, outdoor
 - D-15 Vent termination, sidewall (Cat III)
 - Indoor, vertical (by others)
- Combustion air
 - D-16 Air intake elbow
 - D-17 In-line filter kit (TruSeal only)

- D-12 Barometric damper w/o thermostwitch
- D-18 Boiler vent adapter (Cat III & IV)
- D-19 Vent termination cap adapter (Cat III & IV)
- D-20 Vent termination vertical (Cat I)
- D-21* Truseal direct vent air intake (factory-installed)
- D-22* Truseal direct vent air intake (field-installed) (*must be used with D-17 inline filter kit)
- D-23 Outdoor vent supports
- D-37 Motorized combustion damper

Options

- A-20 30 PSIG MAWP
- B-32 Outdoor air sensor
- B-65 Indirect tank Aquastat control
- E-5 Alarm with 4" bell
- F-10 Low water cut-off, remote probe
- I-1 High limit control, auto reset 240°F (115.6°C) max
- I-2 High limit, manual reset, 240°F (115.6°C) max
- I-5 High limit, manual reset, 200°F (93.3°C) max
- I-13 High limit, auto reset, 200°F (93.3°C) max
- P ____ Pump: ____ HP, 120V, 1Ø, 60Hz
 - Bronze Cast Iron
 - Mounted Loose
 - Front Rear
- S-1 Low gas pressure switch, manual
- S-2 High gas pressure switch, manual
- X-1 SureRack® Kit
- X-2 SureRack Add-on
- X-3 SureRack restraint brackets
- Z-4 T&P relief valve
- Z-9 Thermometer

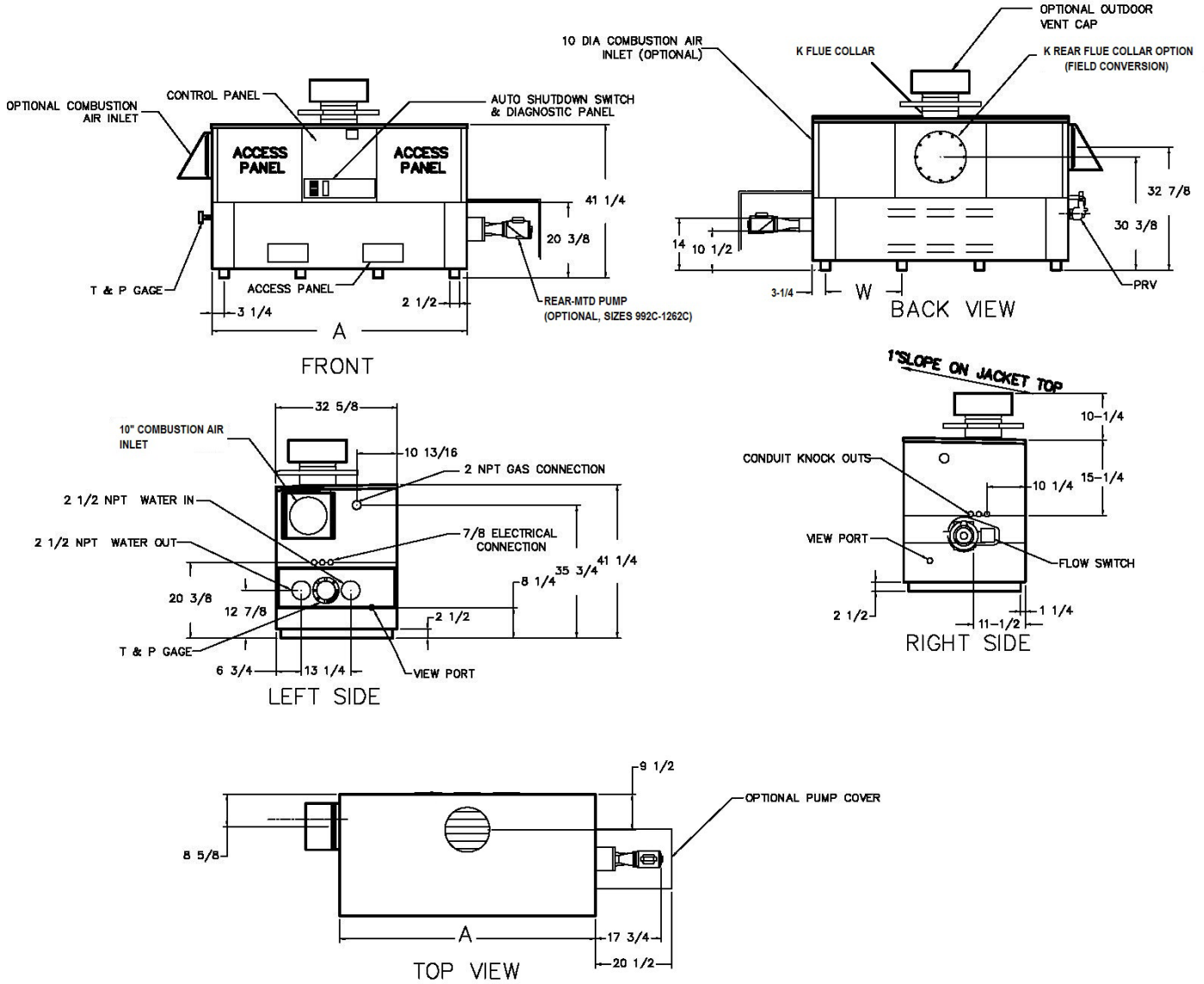
Additional Options or Accessories

- _____

Multi-Boiler Temperature Controllers

- TempTracker Mod+ Hybrid
- B-36, 2-4 Heaters
- B-37, 5-10 Heaters
- B-38, 11-16 Heaters
- B-39* EMS 4-20 mA remote setpoint interface module
- B-62* BACnet MS/TP Interface (*requires B-36 to B-38)

Job: _____



SPECIFICATIONS								
Model	MBTUH (kW)		Dimensions - Inches (mm)					
	Input	Output	Firing Stages	A Width	Flue Collar K	W	Amp. Draw*	Approx. Shipping Wt. Lbs. (Kg)
<input type="checkbox"/> 992C	990 (290)	832 (244)	3	57-1/8 (1451)	10 (254)	16-13/16 (427)	<12	900 (408)
<input type="checkbox"/> 1262C	1260 (369)	1058 (310)	4	68-1/2 (1740)	12 (305)	20-9/16 (522)	<12	1010 (458)
<input type="checkbox"/> 1532C	1530 (448)	1285 (377)	4	79-7/8 (2029)	12 (305)	24-3/8 (619)	<12	1225 (556)
<input type="checkbox"/> 1802C	1800 (528)	1512 (443)	4	91-1/8 (2315)	14 (356)	28-1/8 (714)	<12	1350 (612)
<input type="checkbox"/> 2002C	1999 (586)	1679 (492)	4	102-1/2 (2604)	14 (356)	31-15/16 (811)	<12	1450 (658)
<input type="checkbox"/> 2072C	2070 (607)	1739 (510)	4	102-1/2 (2604)	14 (356)	31-15/16 (811)	<12	1450 (658)
<input type="checkbox"/> 2342C	2340 (686)	1966 (576)	4	113-7/8 (2892)	16 (406)	31-15/16 (811)	<12	1520 (689)

*Without pump

NOTES:
 1. Rates shown are for natural or propane gas, and elevations up to 4,500 feet (1372 m). De-rate above 4,500 ft.
 2. Required natural gas pressure is 5.6" - 10.5" (178 - 267) WC. Required propane gas pressure is 11 - 13" (279 - 330) WC.



Product Submittal for Hi Delta® - Type H

Job: _____

RATES OF FLOW AND PRESSURE DROPS										
Model	20°F ΔT		30°F ΔT		Minimum Flow			Maximum Flow*		
	GPM (L/min)	ΔP (FT.)	GPM (L/min)	ΔP (FT.)	GPM (L/min)	ΔP (FT.)	ΔT °F (°C)	GPM (L/min)	ΔP (FT.)	ΔT °F (°C)
<input type="checkbox"/> 992C	84 (318)	5.6	56 (212)	2.5	43 (163)	1.5	39 (21.6)	132 (500)	14	13 (7.2)
<input type="checkbox"/> 1262C	107 (406)	10	71 (269)	4.5	54 (205)	2.6	39 (21.6)	132 (500)	15.5	16 (8.8)
<input type="checkbox"/> 1532C	130 (493)	16	86 (326)	7.1	66 (250)	4.1	39 (21.6)	132 (500)	16.5	20 (11.1)
<input type="checkbox"/> 1802C			102 (387)	10.8	78 (296)	6	39 (21.6)	132 (500)	18	23 (12.7)
<input type="checkbox"/> 2002C			113 (428)	14	86 (326)	8.1	39 (21.6)	132 (500)	19.5	26 (14.4)
<input type="checkbox"/> 2072C			117 (443)	15	89 (337)	8.7	39 (21.6)	132 (500)	19.5	27 (14.9)
<input type="checkbox"/> 2342C			132 (500)	21	101 (383)	12	39 (21.6)	132 (500)	21	30 (16.6)

*Basis is 40°F ΔT for minimum flow, 132 GPM for maximum flow.