

Job: _____

Engineer: _____

Contractor: _____

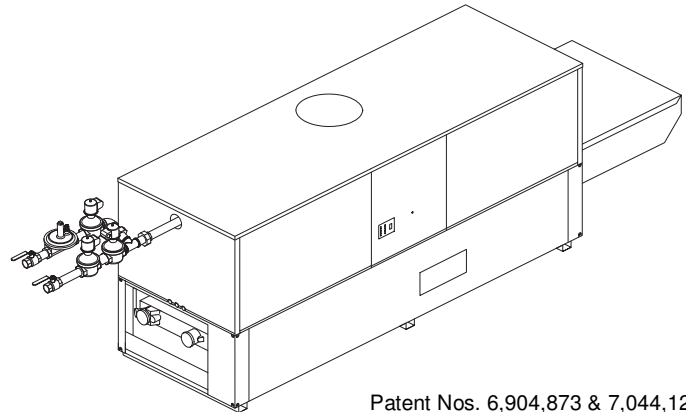
Prepared By: _____ Date: _____

Model: _____ Indoor/Outdoor: _____ MBTUH Input: _____

Hi Delta FlexGas® - Type WH

Dual-Fuel Water Heaters Models 302BD-902BD

- Fast, Economical Natural-to-Propane Gas Switchover**
- 100% Factory Fire Tested**
- 85% Efficiency**
- Maximum Outlet Temperature: 200 °F**
- Minimum Non-Condensing Inlet Temperature: 105 °F**
- Thermal Shock Proof Heat Exchanger**
- Limited Twenty-Year Thermal Shock Warranty**
- Limited Five-Year Heat Exchanger Warranty**
- Diagnostic Center with Fault History**
- PolyTuf Powder Coated Cabinet**
- No Combustible Floor Shield Required**
- Fan-Assisted Low NOx Burners**
- Patented Burner Security Blanket**



Patent Nos. 6,904,873 & 7,044,124;
other patents pending



Proudly Assembled in the USA

Heat Exchanger

- HLW Stamp
- Headers
 - Bronze – Standard
 - Glass-Lined Cast Iron – Option A-2
- ASME Inspected and Stamped
160 PSIG Working Pressure
- National Board Approved
- Fin Tubing
 - Copper – Standard
 - Cupro Nickel – Option A-3
- ASME Steel Tube Sheet
- Silicone High Temp. O-Rings
- ASME Pressure Relief Valve
 - 125 PSIG – Standard
 - _____ PSIG – Optional
- Temperature and Pressure Gauge
- Water Connections
 - Left – Standard
 - Right – Option A-6

Controls

- 120V, 60Hz, 1Ø Power Supply
- 120/24V 60Hz Transformer
- 100% Shut-Off/Lockout
- Hot Surface Ignition
- Remote Flame Sensor
- High Limit Control, Manual Reset
- On/Off Power Switch
- Manual Shut-Off, Front-Mounted
- Flow Switch
- Blocked Vent Pressure Switch
- Combustion Air Proving Switch
- Economaster Pump Time Delay
- Enable/Disable

Gas Train

- Manual Gas Shut-Off Valve(s)
- Gas Pressure Regulator
- Safety Shut-Off Valve
- Firing Control Valve
- Firing Mode
 - On/Off: Models 302BD-402BD
 - 2-Stage: Models 302BD-902BD
- Natural/Propane Gas
- Gas Connection
 - Left – Standard
 - Right – Option Z-1
- Design Certified - ANSI Z21.10.3/
CSA 4.3

Construction

- Indoor/Outdoor Construction
- Front Controls Enclosed
- PolyTuf Powder Coat Finish
- CSA Low Lead Certified ≤ .25 Lead

Venting

- Vent Location
 - Top – Standard
 - Rear – Option D-14
- Vent Termination Cap
 - Outdoor D-11
 - Indoor, Horizontal D-15
 - Indoor, Vertical (by others)
- Combustion Air
 - In-Line Filter Kit (TruSeal only) D-17
 - Air Intake Elbow D-16
- Extractor – Optional
 - By others
 - Not required

Burner

- Ultra-Low NOx: Less than 20 PPM

Temperature Controls

- B-2 Tankstat, Single-Stage (100-200 °F)
- B-3 Tankstat, 2-Stage (100-200 °F)
- B-21 TempTracker Digital Controller, 4-Stage
- B-__ TempTracker Mod+ (Up to 16 Boilers)
- B-60 Stage Interface

Options

- C-6 Ignition Module, Manual Reset
- D-21 TruSeal® Direct Vent
- F-10 Low Water Cut-Off, Remote Probe
- I-1 High Limit Control, Auto Reset
- P-__ Pump, Bronze
____ HP, 120V, 1Ø, 60Hz
Water Hardness: _____ GPG
 - Mounted Loose
 - Front Rear
- P-__ Cold Water Run (See 1000.19)
- S-1 Low Gas Pressure Switch, Manual
- S-2 High Gas Pressure Switch, Manual
- X-1 SureRack™ Kit
- X-2 SureRack Add-on

Regulatory Agency Requirements

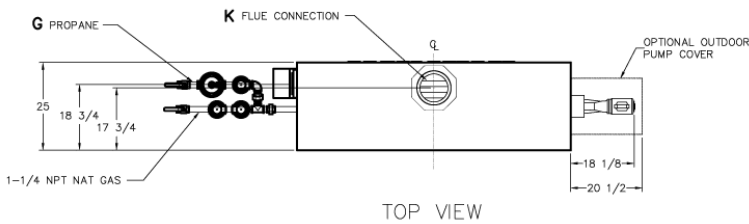
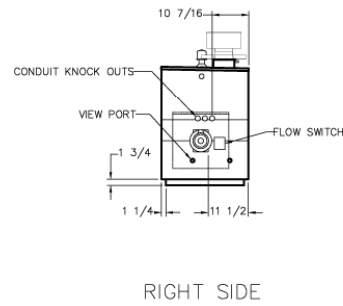
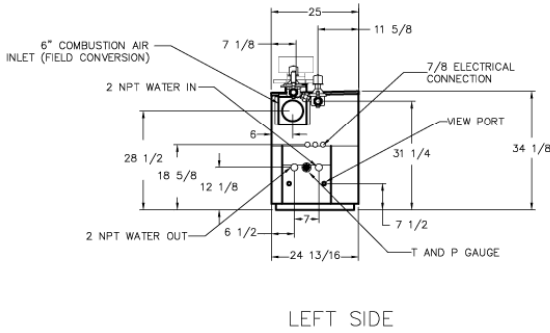
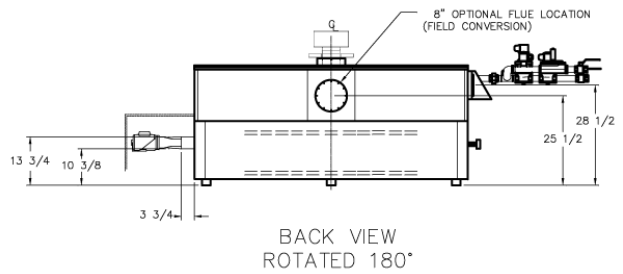
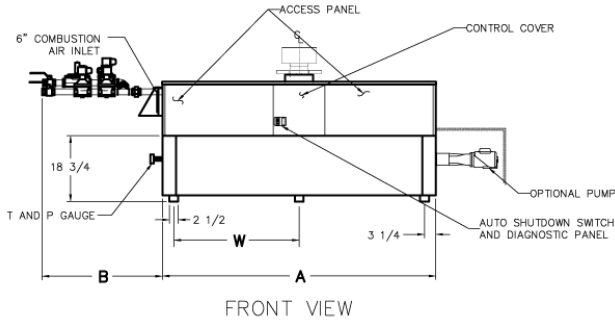


Raypak®

A Rheem® Company

Hi Delta FlexGas – Type WH Models 302BD-902BD

Model _____



NOTE: Pump location varies based on model and application.

SPECIFICATIONS

NOTES

- Dimensions are in inches.
- Rates shown are for natural or propane gas, and elevations up to 5,000 feet. For installation above 5,000 feet, please contact manufacturer.
- Required natural gas supply pressure is 7 - 10.5" WC. Required propane gas supply pressure is 11 - 13" WC.

Model	MBTUH		A Width	B	G - NPT Pro.	K	W	Amp. Draw*	Approx. Shipping Wt. (Lbs)
	Input	Output							
302BD	300	255	36	41	3/4	5	18	6	405
402BD	399	339	43	41	3/4	6	18-1/2	6	470
502BD	500	425	50	35-1/2	1-1/4	6	22	6	570
652BD	650	553	60-1/2	30-1/2	1-1/4	8	27-1/4	6	615
752BD	750	638	67-1/2	27-1/2	1-1/4	8	30-3/4	6	700
902BD	900	765	78	34-1/2	1-1/4	8	36	7	765

* Without pump

Model	RATES OF FLOW AND PRESSURE DROPS										RECOVERY RATES (GPH)										
	10°F ΔT		20°F ΔT		30°F ΔT		Min. Flow			Max. Flow			Temperature Rise (°F)								
	GPM	ΔP (ft)	GPM	ΔP (ft)	GPM	ΔP (ft)	GPM	ΔP (ft)	ΔT	GPM	ΔP (ft)	ΔT	20°	30°	40°	50°	60°	70°	80°	90°	100°
302BD	52	3.3	N/A	N/A	N/A	N/A	40	2.0	13	90	9.8	6	1545	1030	773	618	515	442	386	343	309
402BD	68	5.4	N/A	N/A	N/A	N/A	40	2.0	17	90	10.0	8	2055	1370	1028	822	685	587	514	457	411
502BD	86	9.3	43	2.3	N/A	N/A	40	2.1	21	90	10.4	9	2576	1717	1288	1030	859	736	644	572	515
652BD	N/A	N/A	56	4.2	N/A	N/A	40	2.2	28	90	10.8	12	3348	2232	1674	1339	1116	957	837	744	670
752BD	N/A	N/A	64	5.3	42	2.6	42	2.6	30	90	11.3	14	3864	2576	1932	1545	1288	1104	966	859	773
902BD	N/A	N/A	77	8.5	51	3.9	51	3.9	30	90	11.7	17	4636	3091	2318	1855	1545	1325	1159	1030	927

Basis is 40 GPM or 30°F ΔT for minimum flow, 90 GPM for maximum flow.

Raypak, Inc. ▪ 2151 Eastman Avenue, Oxnard, CA 93030 ▪ (805) 278-5300 ▪ Fax (800) 872-9725 ▪ www.raypak.com