

XFIIRE PIPE SIZES		
	1 UNIT PORT	MAX FLOW
300B	2	38
400B	2	50
500B	2	62
650B	2	80
800B	2	90
1000B	2-1/2	90

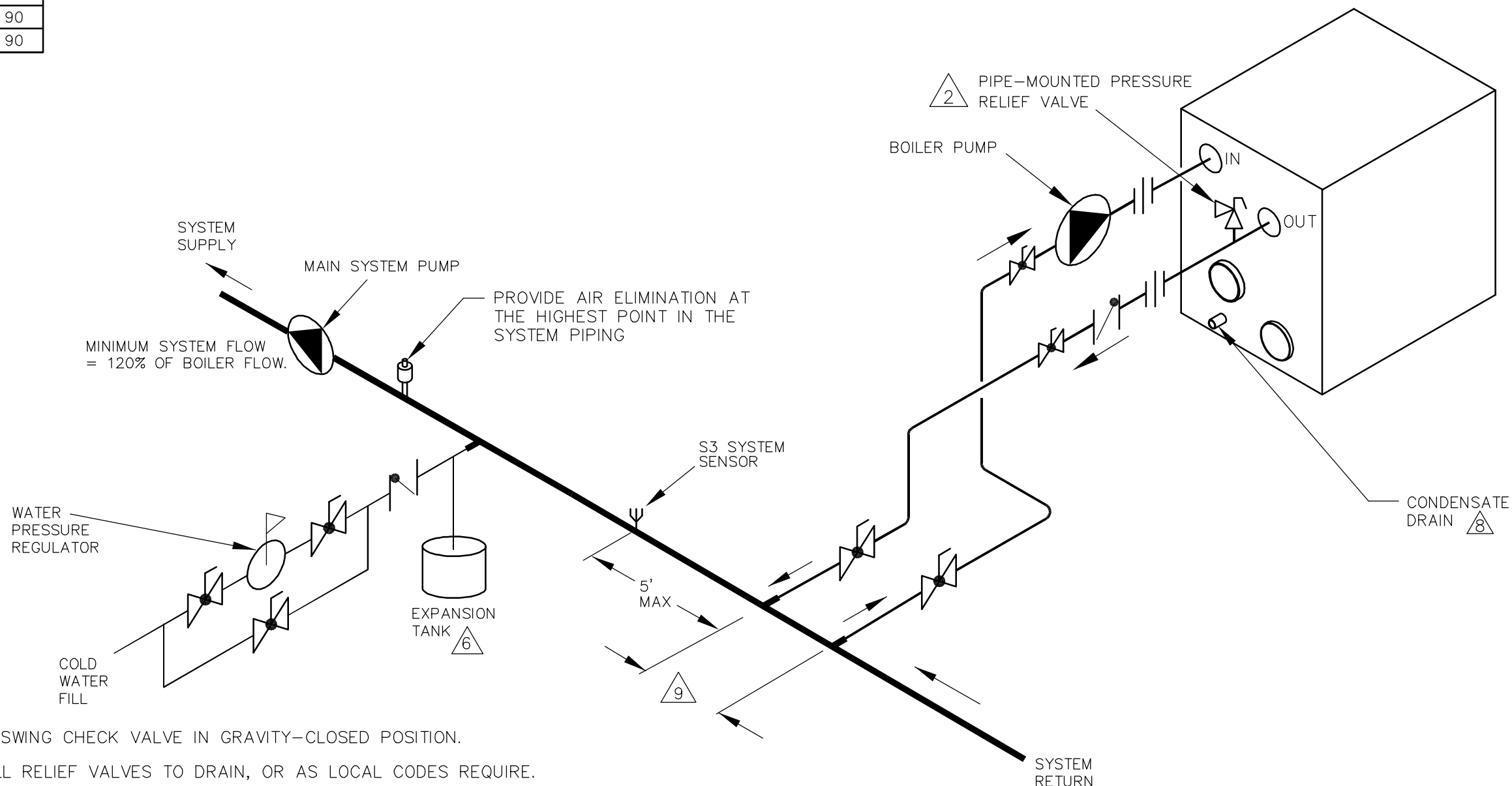
5

THIS PIPING DIAGRAM IS RAYPAK'S RECOMMENDATION AND IS NOT INTENDED TO REPLACE AN ENGINEERED PIPING SYSTEM DESIGNED BY A PROFESSIONAL ENGINEER.

REVISIONS					
REV	DESCRIPTION	E.O.	BY	DATE	CHECK
0	INITIAL RELEASE. SUPERSEDES 8726.		RAN	4-18-20	

8930

0



KEY	
	BALANCING VALVE
	PRESSURE RELIEF VALVE
	PUMP
	UNION
	CHECK VALVE
	BALL VALVE
	THERMOMETER

NOTES:

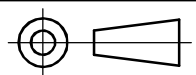
1. PLUMB SWING CHECK VALVE IN GRAVITY-CLOSED POSITION.
2. PIPE ALL RELIEF VALVES TO DRAIN, OR AS LOCAL CODES REQUIRE.
3. LOCATE TEE AS CLOSE AS POSSIBLE TO TANK.
4. INSTALL COLD WATER BETWEEN HEATER OUTLET AND TANK.
5. SEE CHART "PIPE SIZES" FOR PIPE SIZES, CALCULATED AT MAXIMUM FLOW, NOT TO EXCEED 7.5 FT/SEC.
6. PROVIDE FOR THERMAL EXPANSION OF HOT WATER IF A BACKFLOW PREVENTER, CHECK VALVE, WATER METER OR PRESSURE-REDUCING VALVE IS INSTALLED IN THE COLD WATER LINE.
7. STANDARD PUMP SIZING BASED ON 75 EQUIVALENT FEET OF PIPING. IF DISTANCE IS GREATER, THE PUMP MUST BE SIZED TO ACCOMMODATE INCREASE IN PIPING-RELATED LOSSES.
8. CONDENSATE MUST BE PIPED TO AN APPROVED DRAIN. LOCAL CODE MAY REQUIRE PH TREATMENT PRIOR TO DRAIN.
9. DECOUPLER SPAN MUST NOT EXCEED 4 SYSTEM PIPE DIAMETERS OR 12" WHICHEVER IS LESS.

ACAD: 8930. DWG

BOILER SHOWN REPRESENTS VARIOUS MODELS. BECAUSE INDIVIDUAL MODELS WILL VARY IN DESIGN AND SIZING, SEE EACH SPECIFIC BOILER TYPE FOR DETAILS.

8930	UNLESS OTHERWISE SPECIFIED: ALL UNITS ARE IN INCHES FRACTIONS ±1/32 ANGLES ±1° X. = ±.12 X.X = ±.06 X.XX = ±.03 X.XXX = ±.010 DRAFT____ WALL____ RADII____ CONCENTRICITIES .020 DIA. SQUARENESS .015 IN./IN. BREAK EDGES .015 MAX. SURFACE FINISH PER ASME Y14.36M-1996	APPROVED	DATE		OXNARD, CALIFORNIA	
	CHECKED	DATE	E.O.			SCALE
	DRAWN	DATE	R NASH	4-28-2020	SPR	NONE
	TITLE		RAYPAK PROPRIETARY AND CONFIDENTIAL INFORMATION This drawing contains Confidential and Proprietary Information of Raypak, Inc. All rights reserved by Raypak, Inc.			
0	MAT'L.	SERIES/MODEL	SIZE	DWG. NO.	REV	
		H7 300B-1000B	B	8930	0	

PIPING, HYDRONIC: 1 XFIIRE



2

1