



Product Submittal Hot Water Storage Tank

ASME Code

Stock 235 - 534 Gallons

Date: _____ Job: _____ Location: _____

Equipment Tags: _____ Engineer: _____ Contractor: _____

Model: _____ Notes: _____

Prepared by: _____ Indoor Outdoor

ASME HLW, 160 PSIG MAWP

Vertical

Manhole - 11" x 15"

Angle iron legs

Glass lining

Threaded openings:

3 NPT Supply, return and outlet

1 NPT T&P relief valve

1-1/4 NPT Drain

5-year limited warranty

Magnesium anodes

Primer finish

Insulated with either fiberglass metal jacketed or rigid foam at a minimum R value of 12.5

Proudly assembled in the USA

FOR ADDITIONAL ASME TANKS SEE PART NO.

241914 Stock, 80-175 Gallons

241916 Custom, 115-1794 Gallons

Note: Larger tanks are available upon request



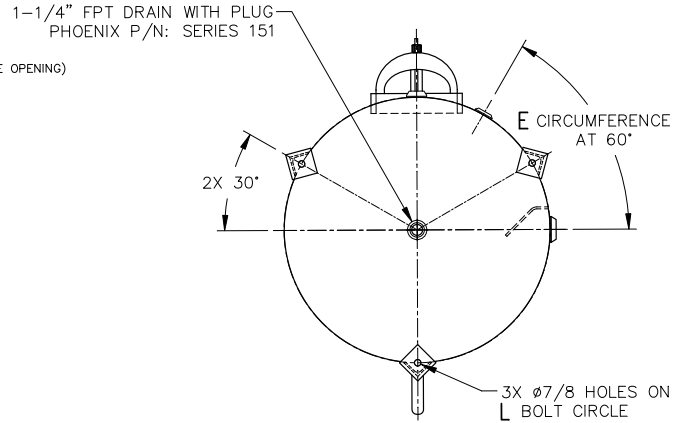
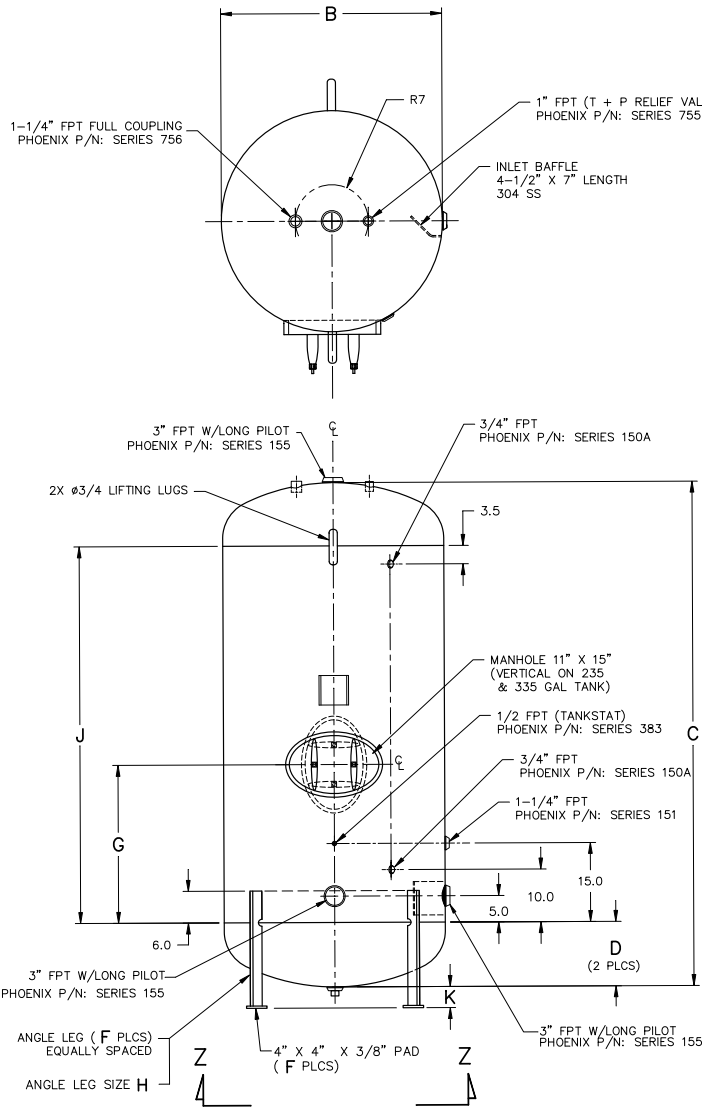
534-gallon tank illustrated



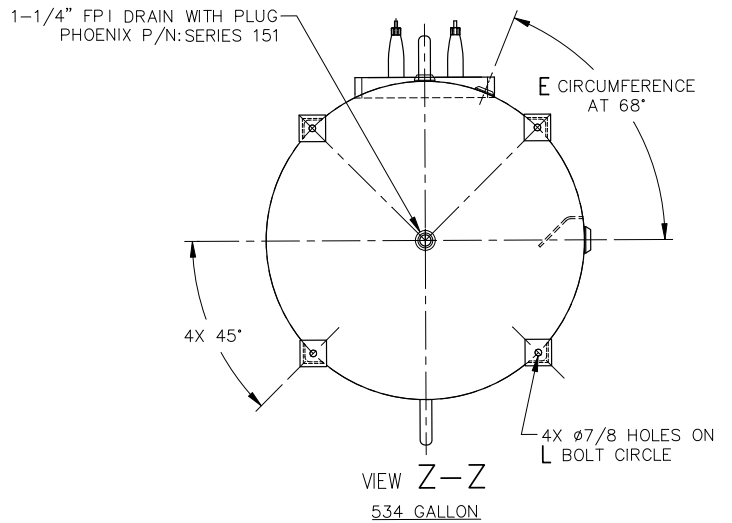
Job: _____

ASME Tanks (235 - 534-Gallons)

Tank Specifications & Dimensions



VIEW Z-Z
235 & 335 GALLON



VIEW Z-Z
534 GALLON

Part Number	Capacity Gallons (Liters)	Dimensions - Inches (mm)											Weight with R16 Foam lbs. (kg)	Weight with 3" FGMJ Foam lbs. (kg)
		B	C	D	E	F	G	H	J	K	L	M		
951408	235 (889)	30 (762)	84 (2133)	10.44 (265)	15.75 (400)	3 (76.2)	30 (762)	2.5 X 2.5 (63 X 63)	63.13 (1603)	4 (102)	30.1 (764)	48±.5 (1219)	564 (255)	585 (265)
951409	335 (1268)	36 (914)	84 (2133)	11.38 (289)	18.88 (480)	3 (76.2)	30 (762)	3 X 3 (76 X 76)	61.25 (1556)	4.75 (121)	36.1 (917)	60±.5 (1524)	726 (329)	752 (341)
951564	499 (1888)	42 (1066)	92 (2337)	11.4 (289)	92.94 (2360)	4 (102)	33 (838)	3 X 3 (76 X 76)	69.3 (1760)	6 (152)	42 (1067)	80±.5 (2032)	964 (437)	997 (452)
951410	534 (2021)	42 (1066)	96 (2438)	11.38 (289)	25 (635)	4 (102)	33 (838)	3 X 3 (76 X 76)	72.5 (1841)	5 (127)	42 (1067)	84±.5 (2133)	1096 (497)	1130 (513)