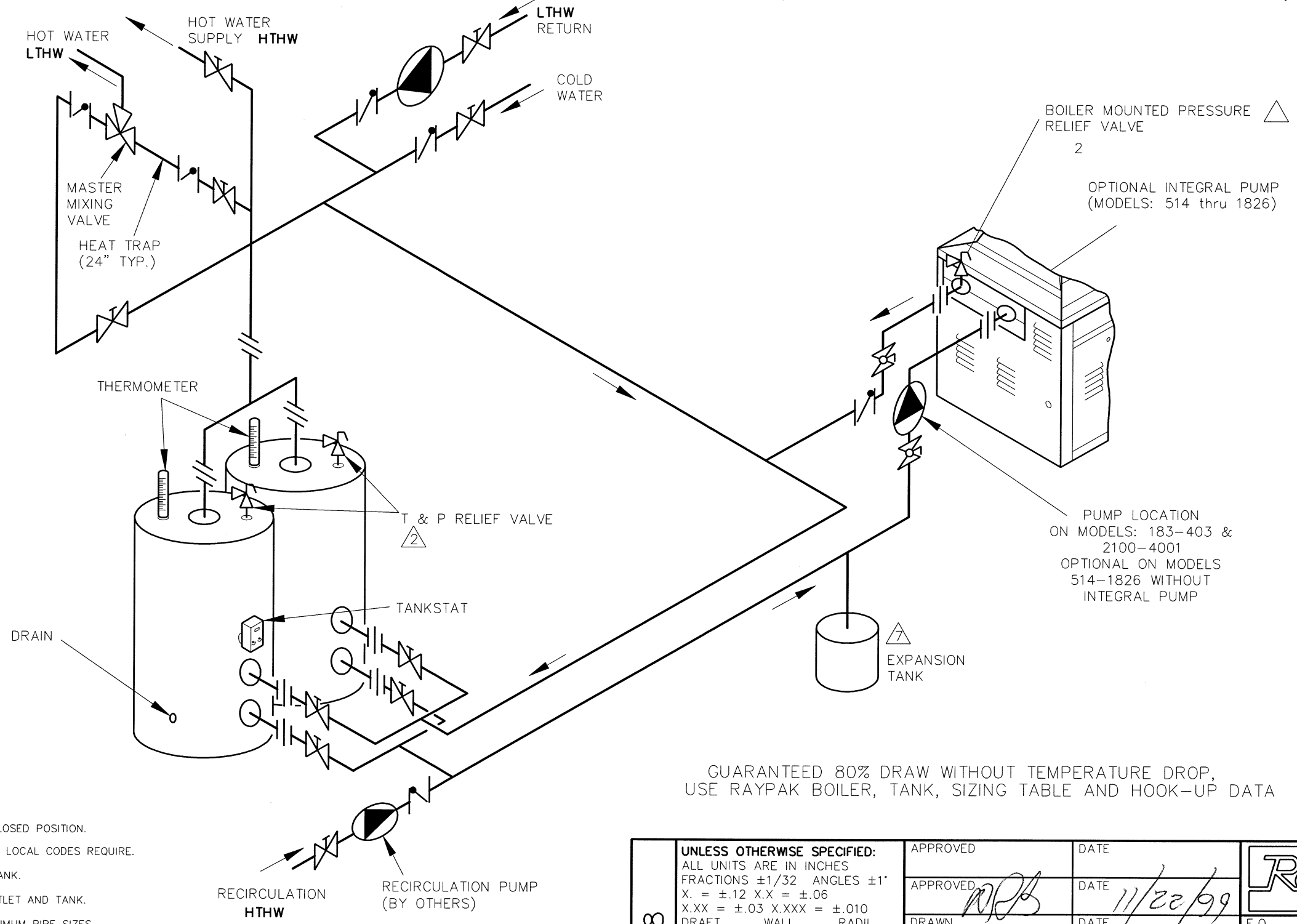


MINIMUM PIPE SIZES		
	BRANCH	MAIN
133	1"	1-1/4"
183-403	1-1/4"	1-1/2"
514-824	1-1/2"	2"
926-1826	2"	2-1/2"
2100-4001	2-1/2"	3"

REVISIONS					
REV	DESCRIPTION	E.O.	BY	DATE	CHECK



ADDITIONAL PARTS LIST		KEY	
QTY	MIN. SIZE	SYMBOL	DESCRIPTION
—	—		PRESSURE RELIEF VALVE
—	—		PUMP
A	—		UNION
B	—		GATE VALVE
C	—		CHECK VALVE
A	—		BALL VALVE
B	—		BALL VALVE
C	—		BALL VALVE
—	—		THERMOMETER

GUARANTEED 80% DRAW WITHOUT TEMPERATURE DROP, USE RAYPAK BOILER, TANK, SIZING TABLE AND HOOK-UP DATA

- NOTES:
1. PLUMB SWING CHECK VALVE IN GRAVITY CLOSED POSITION.
 2. PIPE ALL RELIEF VALVES TO DRAIN, OR AS LOCAL CODES REQUIRE.
 3. LOCATE TEE AS CLOSE AS POSSIBLE TO TANK.
 4. INSTALL COLD WATER BETWEEN BOILER OUTLET AND TANK.
 5. SEE CHART "MINIMUM PIPE SIZES" FOR MINIMUM PIPE SIZES.
 6. SIZING BASED ON BOILER AND TANK BEING PLACED FIVE FEET APART. IF DISTANCE IS GREATER, THE PUMP MUST BE SIZED TO ACCOMMODATE INCREASE IN PIPING RELATED LOSSES.
 7. PROVIDE FOR THERMAL EXPANSION OF HOT WATER IF A BACKFLOW PREVENTER, CHECK VALVE, WATER METER OR PRESSURE-REDUCING VALVE IS INSTALLED IN THE COLD WATER LINE.
 8. PIPING BRANCHES ON BOTH HEATERS AND TANKS TO BE EQUIDISTANT TO PROVIDE BALANCED FLOW.

ACAD: 8228. DWG

BOILERS SHOWN REPRESENT VARIOUS MODELS. BECAUSE INDIVIDUAL MODELS WILL VARY IN DESIGN AND SIZING, SEE EACH SPECIFIC BOILER TYPE FOR DETAILS.

8228	UNLESS OTHERWISE SPECIFIED: ALL UNITS ARE IN INCHES FRACTIONS ±1/32 ANGLES ±1' X. = ±.12 X.X = ±.06 X.XX = ±.03 X.XXX = ±.010 DRAFT ___ WALL ___ RADII ___ CONCENTRICITIES .020 DIA. SQUARENESS .015 IN./IN. BREAK EDGES .015 MAX. SURFACE FINISH PER ASME Y14.36M-1996	APPROVED	DATE		WESTLAKE VILLAGE, CALIFORNIA	
	APPROVED <i>[Signature]</i>	DATE 11/22/99	E.O.			SCALE
	DRAWN D BALDWIN	DATE 11-22-99	SPR	NONE	THIS DRAWING SUBMITTED UNDER CONFIDENTIAL RELATIONSHIP, AS IT EMBODIES PROPRIETARY INFORMATION, WITH ALL RIGHTS RESERVED BY RAYPAK, INC.	
	TITLE	SERIES/MODEL	DWG. NO.	REV		
PIPING: UNI-TEMP 80: 1 BOILER, 2 V TANKS, 2 TEMP		W 183-4001	8228			