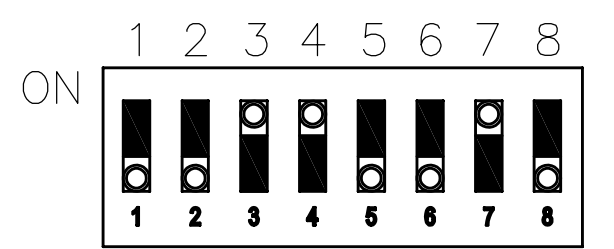
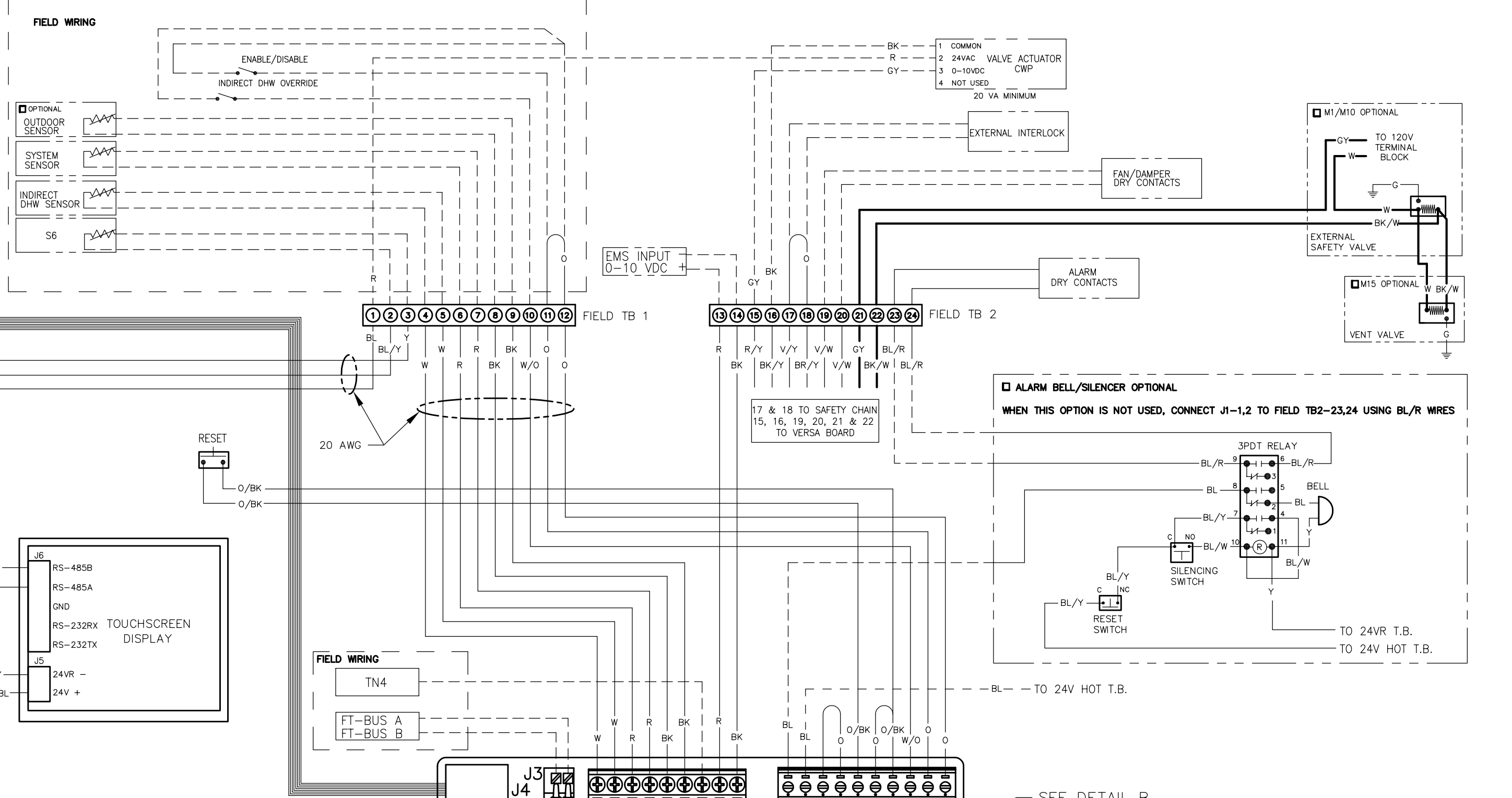
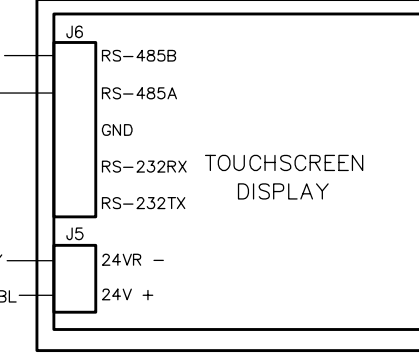
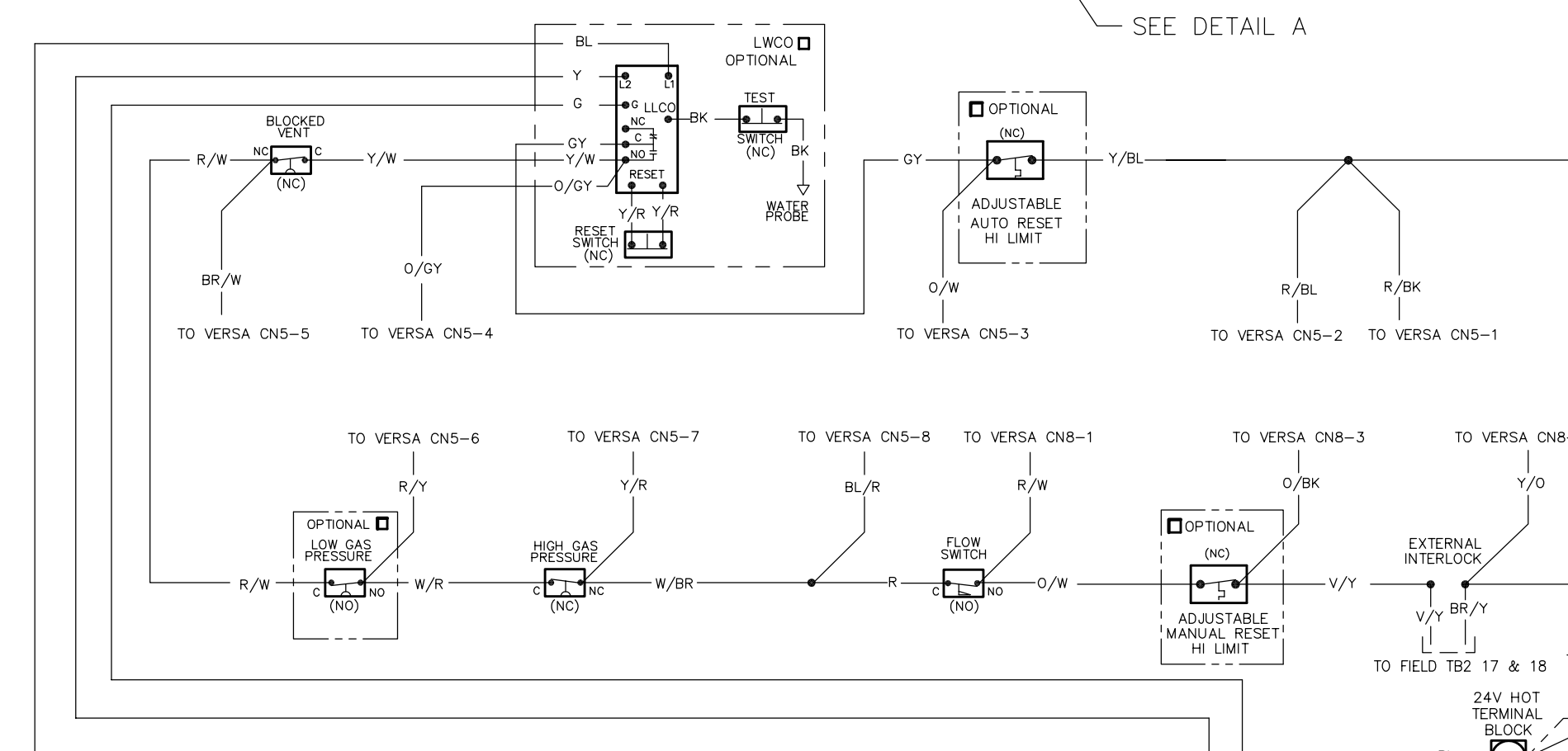
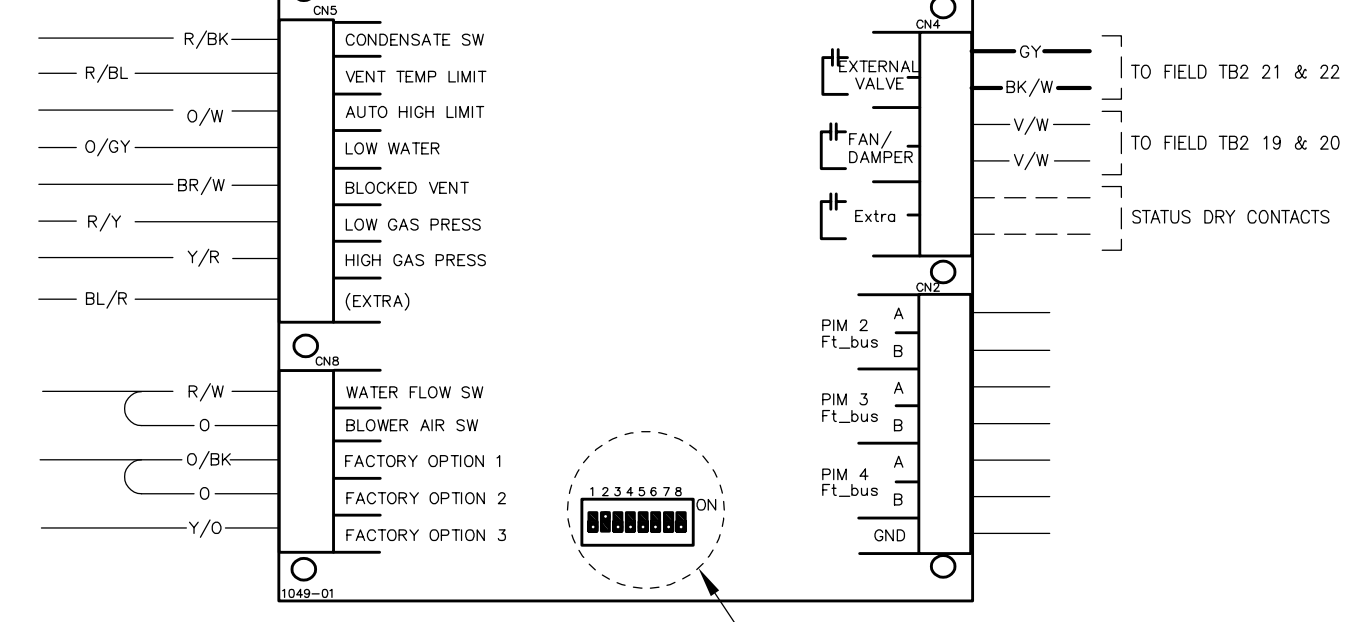
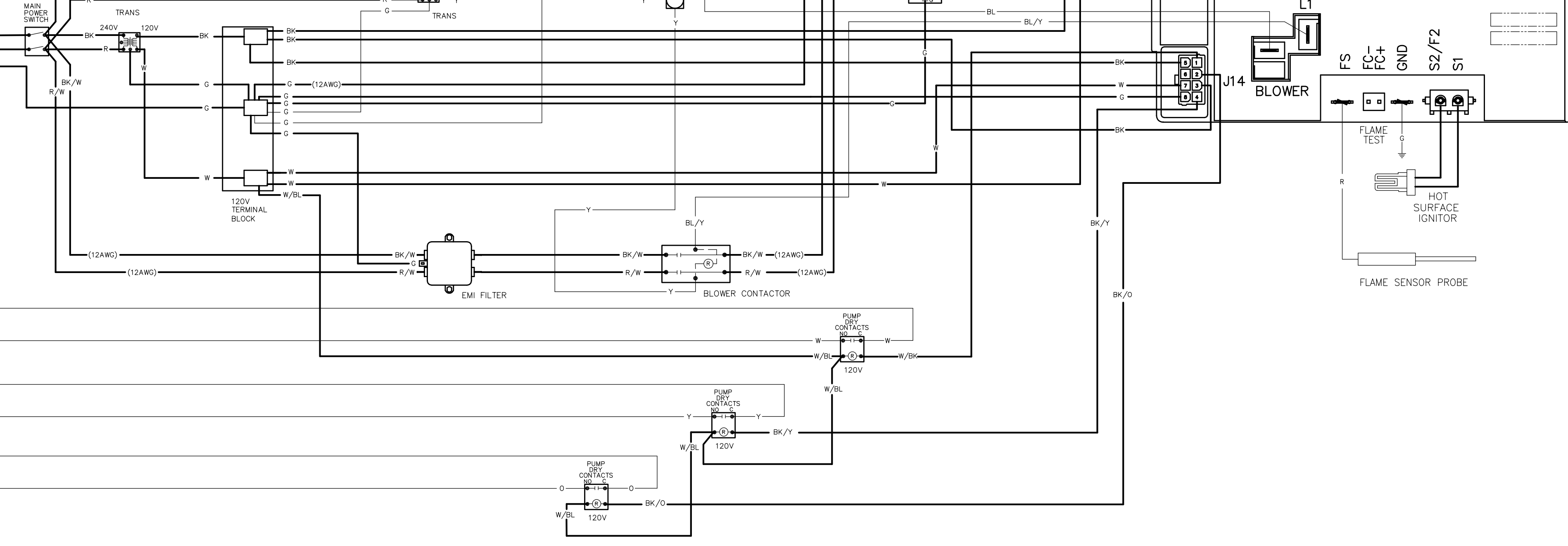
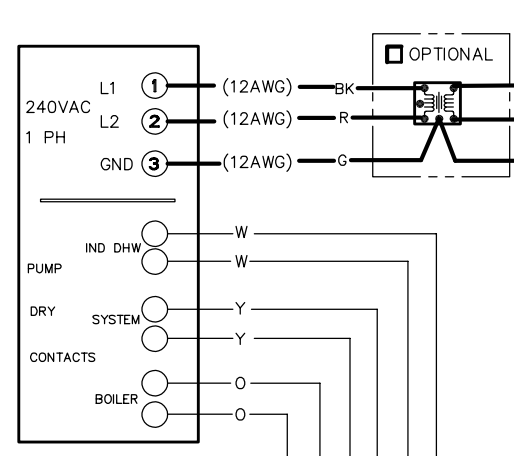


**DETAIL A**  
 DIPSWITCH #2 "ON" FOR MASTER CONTROL ONLY  
 DIPSWITCH #3 "ON" FOR CWP ONLY  
 SEE 1 & 0 MANUAL FOR OTHER CONFIGURATIONS

**Raypak VERSA #013935F**



**DETAIL B**  
 DEFAULT SETTING - 3, 4, 7 ON, ALL OTHER SWITCHES OFF  
 SEE 1 & 0 MANUAL FOR OTHER CONFIGURATIONS



- NOTES:**
- WHEN NOT USED, OPTIONAL SAFETIES ARE JUMPED. REMOVE JUMPERS WHEN OPTIONAL SAFETIES ARE ADDED.
  - ALL MICROFIT CONNECTIONS ARE MADE WITH 20 AWG WIRES
  - UNLESS OTHERWISE SPECIFIED ALL WIRES ARE 18 AWG
  - IF ANY OF THE ORIGINAL WIRE AS SUPPLIED WITH THE HEATER MUST BE REPLACED, IT MUST BE REPLACED WITH ITS EQUIVALENT 105°C.
  - CHECK CONTROLS PROVIDED (WIRED AS SHOWN)
  - PUMP RELAY MUST BE RATED FOR APPROPRIATE PUMP SIZE.
  - USE GROUND CONNECTION PROVIDED. FAILURE TO PROVIDE PROPER GROUND MAY RESULT IN LOCK-OUT.

**KEY**

---	LOW VOLTAGE
- - -	FIELD INSTALL
---	LINE VOLTAGE
- - -	FIELD INSTALL
⊕	GROUND
⊕	MALE/FEM TERMINAL CONN
○	TERMINAL
●	CONNECTION
BK	BLACK
BL	BLUE
BR	BROWN
GY	GRAY
G	GREEN
O	ORANGE
R	RED
V	VIOLET
W	WHITE
Y	YELLOW

CHECKED BY:	
APPROVED BY:	
ORIG E.O. 4990	2/28/13
CHG E.O. 6509	02/28/19
<b>Raypak</b>	
INPUTS:	2,500,000 THRU 4,000,000 BTUH
SIZE:	2503-4003
TYPE:	H7/WH7
153120	11