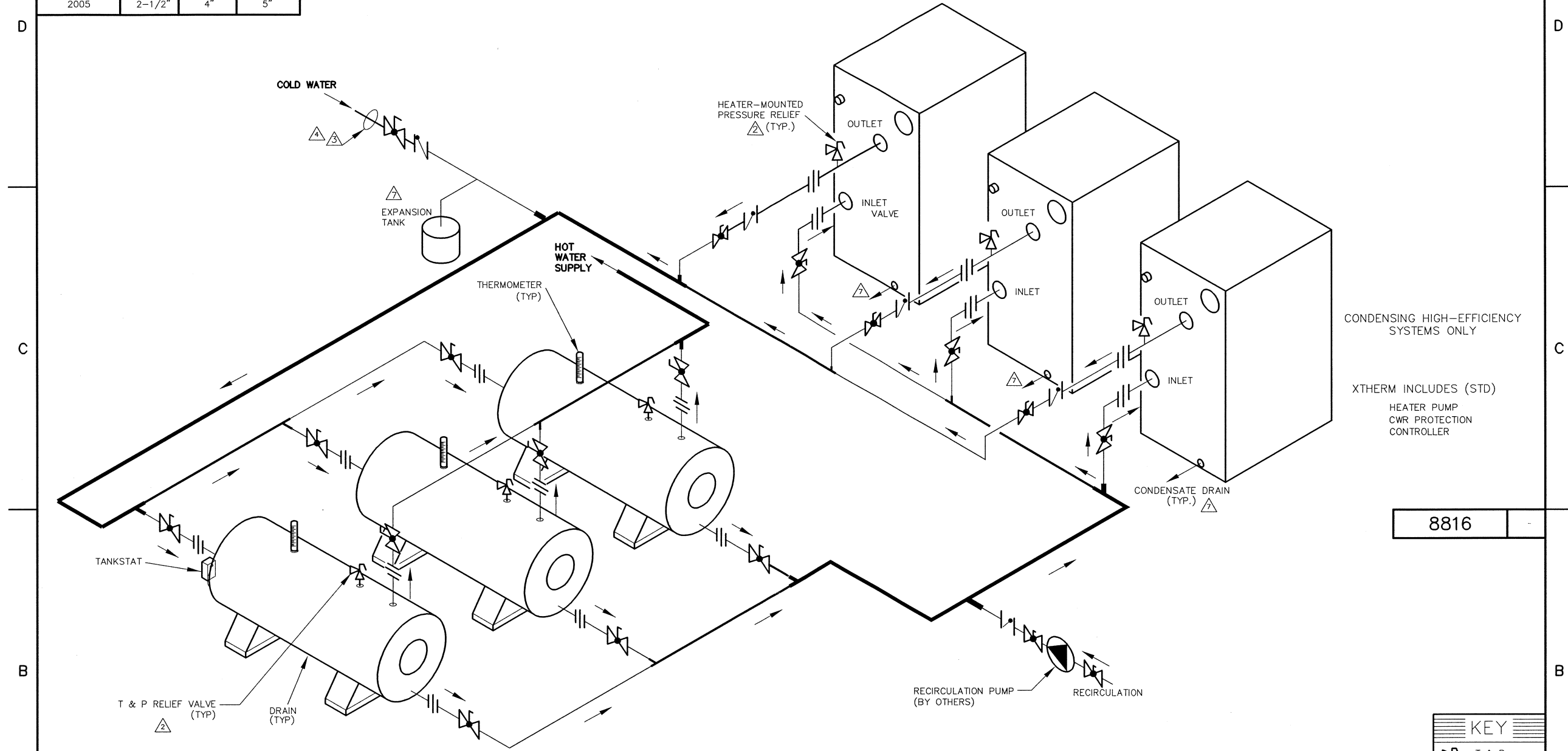


| PIPE SIZES |          |           |         |
|------------|----------|-----------|---------|
|            | 1 HEATER | 2 HEATERS | 3 UNITS |
| 1005-1505  | 2-1/2"   | 3"        | 4"      |
| 2005       | 2-1/2"   | 4"        | 5"      |

THIS PIPING DIAGRAM IS RAYPAK'S RECOMMENDATION AND IS NOT INTENDED TO REPLACE AN ENGINEERED PIPING SYSTEM DESIGNED BY A PROFESSIONAL ENGINEER.

| REVISIONS |      |             |      |    |       |
|-----------|------|-------------|------|----|-------|
| REV       | ZONE | DESCRIPTION | E.O. | BY | CHECK |
|           |      |             |      |    |       |



CONDENSING HIGH-EFFICIENCY SYSTEMS ONLY  
 X THERM INCLUDES (STD)  
 HEATER PUMP  
 CWR PROTECTION CONTROLLER

8816

NOTES:

- PLUMB SWING CHECK VALVE IN GRAVITY-CLOSED POSITION.
- PIPE ALL RELIEF VALVES TO DRAIN, OR AS LOCAL CODES REQUIRE.
- LOCATE TEE AS CLOSE AS POSSIBLE TO TANK.
- INSTALL COLD WATER BETWEEN HEATER OUTLET AND TANK.
- SEE CHART "PIPE SIZES" FOR PIPE SIZES, CALCULATED AT MAXIMUM FLOW, NOT TO EXCEED 7.5 FT/SEC.
- COMMON PIPE SIZING BASED ON MAX EQUIVALENT LENGTH OF 100 FEET OF PIPE BETWEEN TANK AND HEATER. IF LONGER, CONSULT FACTORY FOR PROPER PIPE SIZE REQUIRED.
- PROVIDE FOR THERMAL EXPANSION OF HOT WATER IF A BACKFLOW PREVENTER, CHECK VALVE, WATER METER, OR PRESSURE REDUCING VALVE IS INSTALLED IN THE COLD WATER LINE.
- CONDENSATE MUST BE PIPED TO AN APPROVED DRAIN. LOCAL CODE MAY REQUIRE NEUTRALIZATION PRIOR TO DRAIN.
- IF HOT WATER SETPOINT EXCEEDS 150°F WITH MAX FLOW, SPECIFY "H" BOILERS INSTEAD OF "WH" WATER HEATERS.

GUARANTEED 60% DRAW WITHOUT TEMPERATURE DROP, USE RAYPAK HEATER, TANK, SIZING TABLE AND HOOK-UP DATA

| KEY |                    |
|-----|--------------------|
|     | T & P RELIEF VALVE |
|     | PUMP               |
|     | UNION              |
|     | CHECK VALVE        |
|     | BALL VALVE         |
|     | THERMOMETER        |

|   |                              |                                      |
|---|------------------------------|--------------------------------------|
| UNLESS OTHERWISE SPECIFIED:<br>ALL UNITS ARE IN INCHES<br>FRACTIONS ±1/32 ANGLES ±1°<br>X. = ±.12 X.X = ±.06<br>X.XX = ±.03 X.XXX = ±.010<br>DRAFT WALL RADIUS<br>CONCENTRICITIES .020 DIA.<br>SQUARENESS .015 IN./IN.<br>BREAK EDGES .015 MAX.<br>SURFACE FINISH PER ASME Y14.36M-1996 | APPROVED<br><br>DATE 2/27/15 | <br>OXNARD, CALIFORNIA<br>SCALE NONE |
|   | CHECKED<br><br>DATE 2/26/15  |                                      |
| RAYPAK PROPRIETARY AND CONFIDENTIAL INFORMATION<br>This drawing contains Confidential and Proprietary Information of Raypak, Inc. All rights reserved by Raypak, Inc.   |                              |                                      |
| TITLE<br><b>PIPING, UNI-TEMP 60: 3 X THERM, 3 H TANKS</b>   |                              |                                      |
| MATL.   | SERIES/MODEL                 | SIZE DWG. NO.                        |
| WH  | C                            | 8816                                 |

ACAD: 8816.DWG  
 HEATER SHOWN REPRESENTS VARIOUS MODELS. BECAUSE INDIVIDUAL MODELS WILL VARY IN DESIGN AND SIZING, SEE EACH SPECIFIC HEATER TYPE FOR DETAILS.