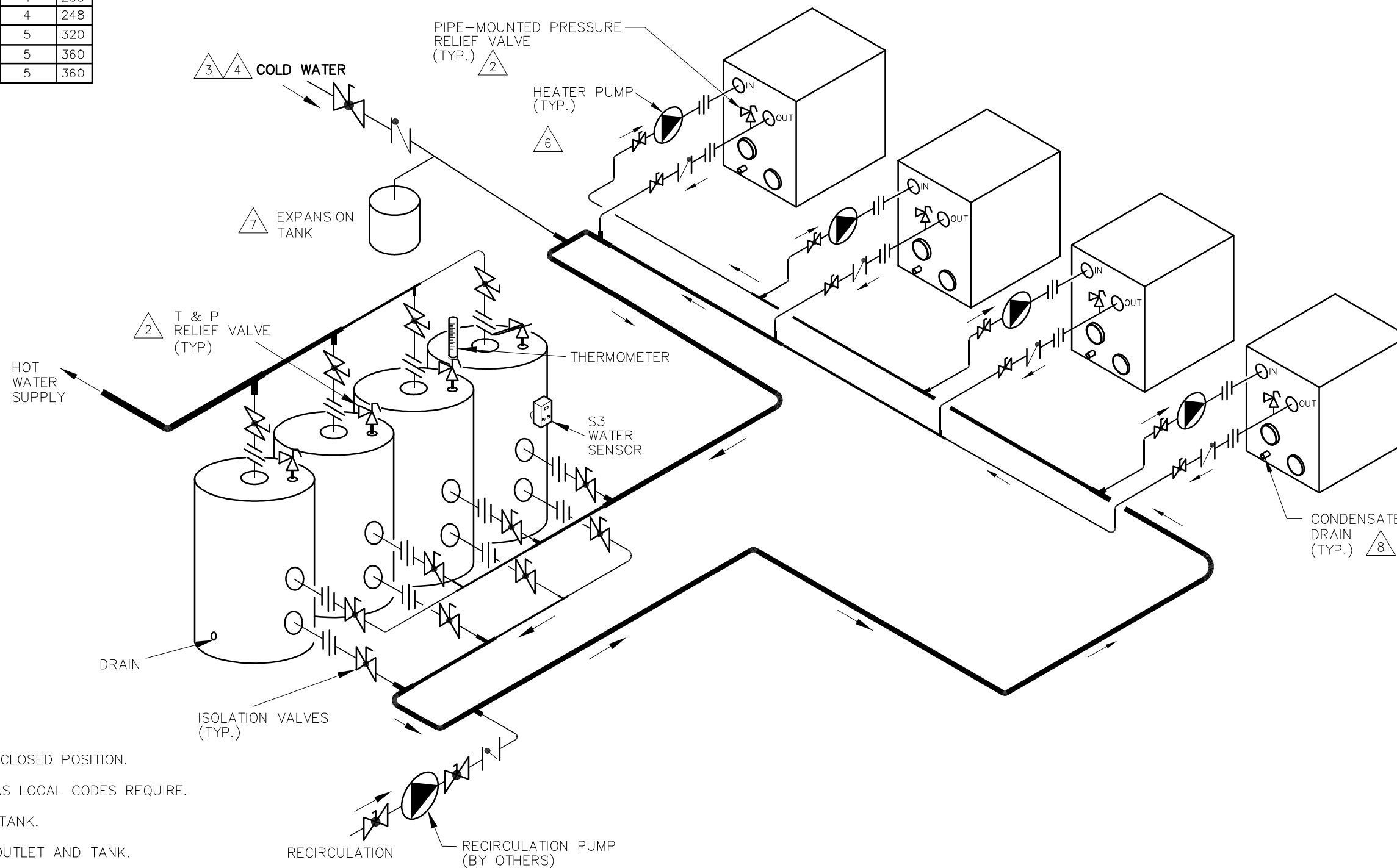


THIS PIPING DIAGRAM IS RAYPAK'S RECOMMENDATION AND IS NOT INTENDED TO REPLACE AN ENGINEERED PIPING SYSTEM DESIGNED BY A PROFESSIONAL ENGINEER.

REVISIONS					
REV	ZONE	DESCRIPTION	E.O.	BY	DATE
0		INITIAL RELEASE. SUPERSEDES 8869.		RAN	9-13-20

XFIIRE PIPE SIZES

	1 UNIT PORT	MAX FLOW	2 UNITS	MAX FLOW	3 UNITS	MAX FLOW	4 UNITS	MAX FLOW
300B	2	38	2	76	2-1/2	114	3	152
400B	2	50	2-1/2	100	3	150	4	200
500B	2	62	2-1/2	124	3	186	4	248
650B	2	80	3	160	4	240	5	320
800B	2	90	4	180	4	270	5	360
1000B	2-1/2	90	4	180	4	270	5	360



NOTES:

1. PLUMB SWING CHECK VALVE IN GRAVITY-CLOSED POSITION.
2. PIPE ALL RELIEF VALVES TO DRAIN, OR AS LOCAL CODES REQUIRE.
3. LOCATE TEE AS CLOSE AS POSSIBLE TO TANK.
4. INSTALL COLD WATER BETWEEN HEATER OUTLET AND TANK.
5. SEE CHART "PIPE SIZES" FOR PIPE SIZES CALCULATED AT MAXIMUM FLOW, NOT TO EXCEED 7.5 FT/SEC.
6. PUMP SIZING BASED ON MAX EQUIVALENT LENGTH OF 75 FEET OF PIPE BETWEEN TANK AND HEATER. IF LONGER, CONSULT FACTORY FOR PROPER PUMP SIZE REQUIRED.
7. PROVIDE FOR THERMAL EXPANSION OF HOT WATER IF A BACKFLOW PREVENTER, CHECK VALVE, WATER METER, OR PRESSURE REDUCING VALVE IS INSTALLED IN THE COLD WATER LINE.
8. CONDENSATE MUST BE PIPED TO AN APPROVED DRAIN. LOCAL CODE MAY REQUIRE NEUTRALIZATION PRIOR TO DRAIN.
9. IF HOT WATER SETPOINT EXCEEDS 160°F WITH MAX FLOW, SPECIFY "H" BOILERS INSTEAD OF "WH" WATER HEATERS.

KEY	
	T & P RELIEF VALVE
	PUMP
	UNION
	CHECK VALVE
	BALL VALVE
	THERMOMETER

GUARANTEED 80% DRAW WITHOUT TEMPERATURE DROP. USE RAYPAK HEATER, TANK, SIZING TABLE AND HOOK-UP DATA

<small>UNLESS OTHERWISE SPECIFIED:</small> ALL UNITS ARE IN INCHES FRACTIONS ±1/32 ANGLES ±1° X. = ±.12 X.X = ±.06 XXX = ±.03 XXXX = ±.010 DRAFT WALL RADIUS CONCENTRICITIES .020 DIA. SQUARENESS .015 IN./IN. BREAK EDGES .015 MAX. SURFACE FINISH PER ASME Y14.36M-1996		APPROVED _____ DATE _____ CHECKED _____ DATE _____ DRAWN <b>R NASH</b> DATE <b>9-13-2020</b> E.O. <b>SPR</b> SCALE <b>NONE</b>	
<small>HEATERS SHOWN REPRESENT VARIOUS MODELS. BECAUSE INDIVIDUAL MODELS WILL VARY IN DESIGN AND SIZING, SEE EACH SPECIFIC HEATER TYPE FOR DETAILS.</small>		RAYPAK PROPRIETARY AND CONFIDENTIAL INFORMATION This drawing contains Confidential and Proprietary information of Raypak, Inc. All rights reserved by Raypak, Inc.	
<b>PIPING, UNI-TEMP 80: 4 XFIIRE, 4 V TANKS</b>			
MATL.	SERIES/MODEL	SIZE DWG. NO.	REV
	<b>WH7 300B-1000B</b>	<b>D 8921</b>	

ACAD: 8921.DWG  
 8921