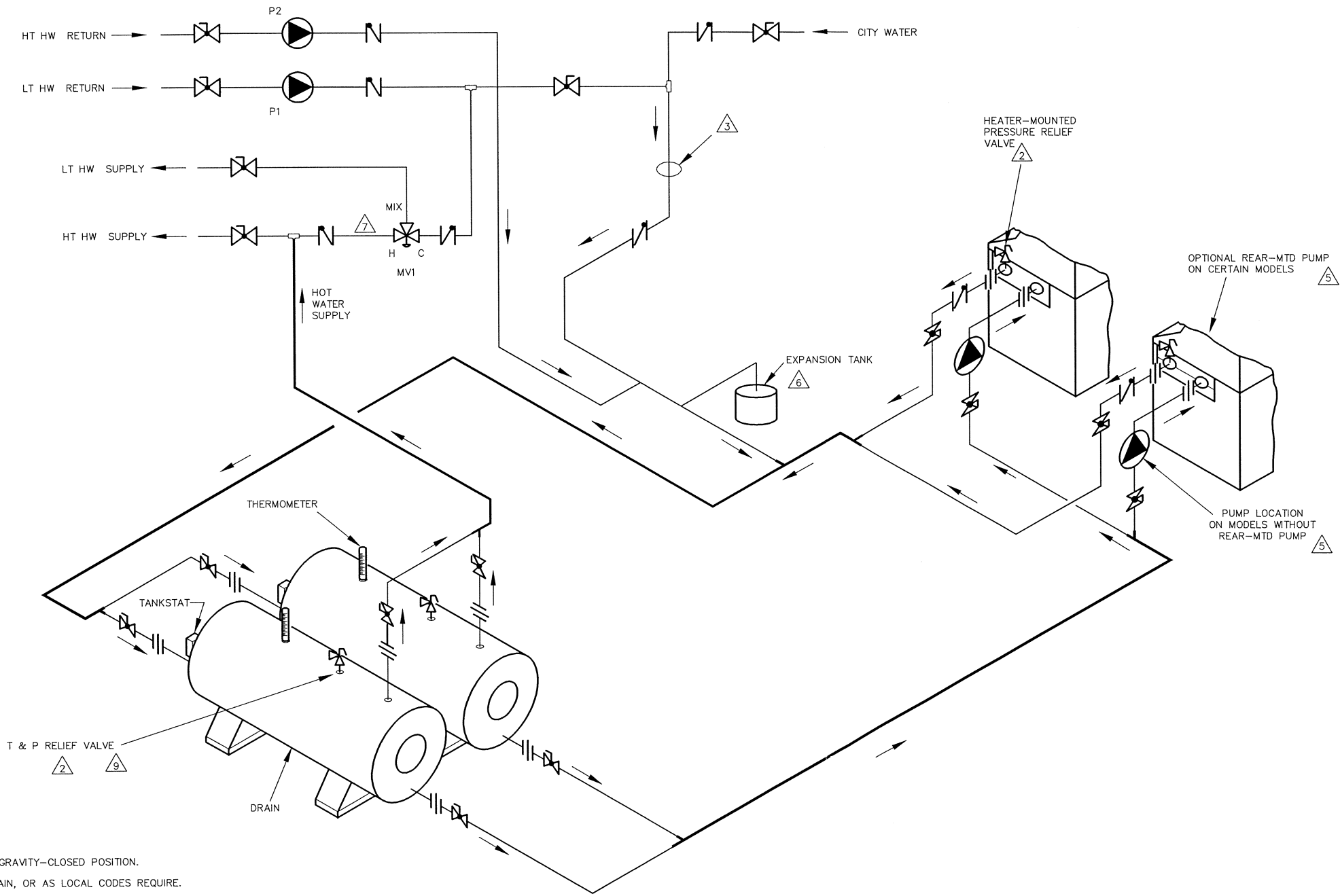


PIPE SIZES			
	UNIT	2 UNITS	MAIN
RAYTHERM			
133	1-1/4"	1-1/2"	2"
181-401	1-1/2"	2"	3"
514-824	2"	3"	5"
926-1826	2-1/2"	3"	5"
2100-4001	3"	4"	8"
MVB			
503-754	2"	3"	5"
1003-2004	2-1/2"	4"	5"
2503-4003	4"	6"	6"
HI DELTA			
HD101-HD401	1-1/2"	2"	3"
302-902	2"	3"	4"
992-2342	2-1/2"	4"	5"

THIS PIPING DIAGRAM IS RAYPAK'S RECOMMENDATION AND IS NOT INTENDED TO REPLACE AN ENGINEERED PIPING SYSTEM DESIGNED BY A PROFESSIONAL ENGINEER.

REVISIONS						
REV	ZONE	DESCRIPTION	E.O.	BY	DATE	CHECK
1		UPDATED FORMAT		RLH	11-22-99	DRB
2		UPDATED FORMAT, USAGE, SYMBOLS ADDED NOTE 8		KA	1-28-11	DRB
3		UPDATED PIPING, TITLE, NOTE 4, 5.		KA	2-7-14	DRB
4		ADDED 2503-4003 USAGE.		KA	6-11-14	DRB



8106 4

KEY	
	PRESSURE RELIEF VALVE
	PUMP
	UNION
	CHECK VALVE
	BALL VALVE
	THERMOMETER

- NOTES:
1. PLUMB SWING CHECK VALVE IN GRAVITY-CLOSED POSITION.
 2. PIPE ALL RELIEF VALVES TO DRAIN, OR AS LOCAL CODES REQUIRE.
 3. INSTALL COLD WATER BETWEEN BOILER OUTLET AND TANK.
 4. SEE CHART FOR PIPE SIZES, CALCULATED AT MAXIMUM FLOW, NOT TO EXCEED 7.5 FT/SEC.
 5. STANDARD PUMP SIZING BASED ON 75 EQUIVALENT FEET OF PIPING. IF DISTANCE IS GREATER, THE PUMP MUST BE SIZED TO ACCOMMODATE INCREASE IN PIPING-RELATED LOSSES.
 6. PROVIDE FOR THERMAL EXPANSION OF HOT WATER IF A BACKFLOW PREVENTER, CHECK VALVE, WATER METER OR PRESSURE-REDUCING VALVE IS INSTALLED IN THE COLD WATER LINE.
 7. REFER TO THE INSTALLATION INSTRUCTIONS FOR MANUFACTURER OF 3-WAY MIXING VALVE.
 8. IF HIGH TEMP HOT WATER SETPOINT EXCEEDS 150° F, SPECIFY 'H' BOILERS INSTEAD OF 'WH' WATER HEATERS.
 9. INDIVIDUAL RELIEF VALVES REQUIRED IF TANKS CAN BE ISOLATED INDIVIDUALLY.

GUARANTEED 60% DRAW WITHOUT TEMPERATURE DROP, USE RAYPAK BOILER, TANK, SIZING TABLE AND HOOK-UP DATA

UNLESS OTHERWISE SPECIFIED: ALL UNITS ARE IN INCHES FRACTIONS ±1/32 ANGLES ±1° X. = ±.12 X.X = ±.06 X.XX = ±.03 X.XXX = ±.010 DRAFT WALL RADII CONCENTRICITIES .020 DIA. SQUARENESS .015 IN./IN. BREAK EDGES .015 MAX. SURFACE FINISH PER ASME Y14.36M-1996	APPROVED <i>STW</i> DATE 6-18-14	DATE 6-17-97	Raypak OXNARD, CALIFORNIA
CHECKED D BALDWIN	DATE 6-17-99	E.O. SPR	SCALE NONE
RAYPAK PROPRIETARY AND CONFIDENTIAL INFORMATION This drawing contains Confidential and Proprietary Information of Raypak, Inc. All rights reserved by Raypak, Inc.			
TITLE PIPING, UNI-TEMP 60: 2 HEATERS, 2 H TANKS, 2 TEMP			
MAT'L	SERIES/MODEL	SIZE	DWG. NO.
	WH	C	8106
			REV 4

ACAD: 8106.DWG
HEATERS SHOWN REPRESENT VARIOUS MODELS. BECAUSE INDIVIDUAL MODELS WILL VARY IN DESIGN AND SIZING, SEE EACH SPECIFIC HEATER TYPE FOR DETAILS.