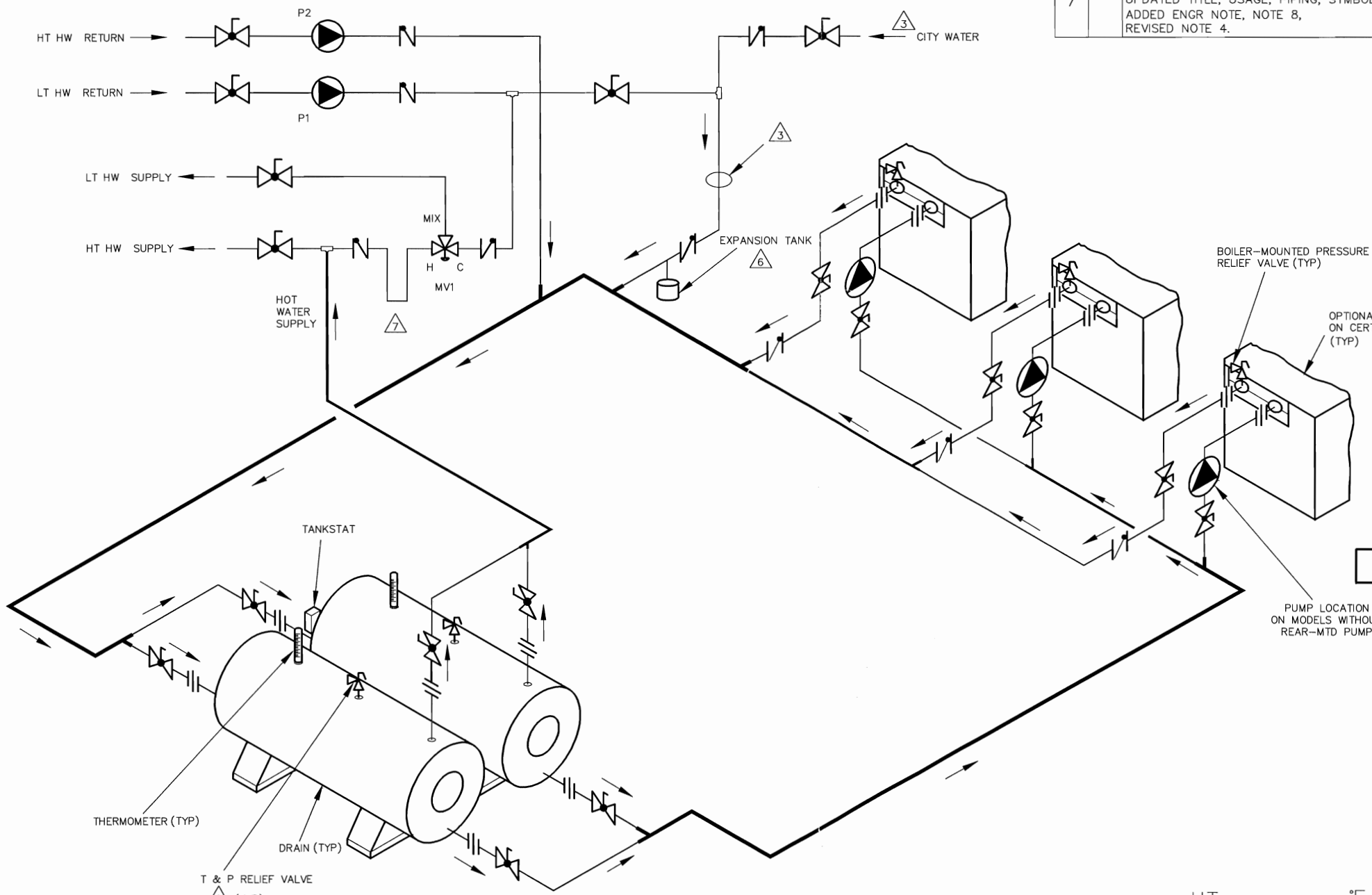


THIS PIPING DIAGRAM IS RAYPAK'S RECOMMENDATION AND IS NOT INTENDED TO REPLACE AN ENGINEERED PIPING SYSTEM DESIGNED BY A PROFESSIONAL ENGINEER.

REV	ZONE	DESCRIPTION	E.O.	BY	DATE	CHECK
5		UPDATED FORMAT, REVISED DRAWING		RLH	11-17-99	DRB
6		181-401 WAS 183-403, MOVED EXPANSION TANK. UPDATE TITLE BLOCK, NOTE: 3, 5, HEATER WAS BOILER.		J.R.	3-18-03	DRB
7		UPDATED TITLE, USAGE, PIPING, SYMBOLS. ADDED ENGR NOTE, NOTE 8, REVISED NOTE 4.		KA	11-19-12	<i>[Signature]</i>

PIPE SIZES	PIPE SIZES		
	UNIT	2 UNITS	3 UNITS
RAYTHERM			
133	1-1/4"	1-1/2"	2"
181-401	1-1/2"	2"	2-1/2"
514-824	2"	3"	4"
926-1826	2-1/2"	3"	4"
2100-4001	3"	4"	6"
MVB			
504-754	2"	3"	4"
1104-2004	2-1/2"	4"	4"
HI DELTA			
HD101-HD401	1-1/2"	2"	2-1/2"
302-902	2"	3"	4"
992-2342	2-1/2"	4"	5"



8061 7

KEY	
	BALANCING VALVE
	PRESSURE RELIEF VALVE
	PUMP
	UNION
	CHECK VALVE
	BALL VALVE
	THERMOMETER

- NOTES:
1. PLUMB SWING CHECK VALVE IN GRAVITY-CLOSED POSITION.
  2. PIPE ALL RELIEF VALVES TO DRAIN, OR AS LOCAL CODES REQUIRE.
  3. INSTALL COLD WATER BETWEEN HEATER OUTLET AND TANK.
  4. SEE CHART "PIPE SIZES" FOR PIPE SIZES, CALCULATED AT MAXIMUM FLOW, NOT TO EXCEED 7.5 FT/SEC.
  5. STANDARD PUMP SIZING BASED ON 75 EQUIVALENT FEET OF PIPING. IF DISTANCE IS GREATER, THE PUMP MUST BE SIZED TO ACCOMMODATE INCREASE IN PIPING-RELATED LOSSES.
  6. PROVIDE FOR THERMAL EXPANSION OF HOT WATER IF A BACKFLOW PREVENTER, CHECK VALVE, WATER METER OR PRESSURE-REDUCING VALVE IS INSTALLED IN THE COLD WATER LINE.
  7. 24-INCH HEAT SINK "U" REQUIRED PER RECOMMENDATIONS OF MANUFACTURER OR 3-WAY MIXING VALVE.
  8. IF HOT WATER SETPOINT EXCEEDS 160°F WITH MAX FLOW, SPECIFY "H" BOILERS INSTEAD OF "WH" WATER HEATERS.

HT = \_\_\_\_\_ °F  
 LT = \_\_\_\_\_ °F

GUARANTEED 60% DRAW WITHOUT TEMPERATURE DROP, USE RAYPAK HEATER, TANK, SIZING TABLE AND HOOK-UP DATA

<small>UNLESS OTHERWISE SPECIFIED:</small> ALL UNITS ARE IN INCHES FRACTIONS ±1/32 ANGLES ±1° X. = ±.12 X.X = ±.06 X.XX = ±.03 X.XXX = ±.010 DRAFT WALL RADII CONCENTRICITIES .020 DIA. SQUARENESS .015 IN./IN. BREAK EDGES .015 MAX. SURFACE FINISH PER ASME Y14.35M-1995	APPROVED  DATE 2-13-14	OXNARD, CALIFORNIA
	CHECKED D BALDWIN DATE 8-9-96	
DRAWN D BALDWIN DATE 8-6-96	SIZE C THIS DRAWING SUBMITTED UNDER CONFIDENTIAL RELATIONSHIP, AS IT EMBODIES PROPRIETARY INFORMATION. WITH ALL RIGHTS RESERVED BY RAYPAK, INC.	
TITLE <b>PIPING, UNI-TEMP 60: 3 HEATERS, 2 H TANKS, 2 TEMP.</b>		
MAT'L	SERIES/MODEL	DWG. NO.
	WH	8061
		REV 7

ACAD: 8061, DWG  
 HEATERS SHOWN REPRESENT VARIOUS MODELS. BECAUSE INDIVIDUAL MODELS WILL VARY IN DESIGN AND SIZING, SEE EACH SPECIFIC HEATER TYPE FOR DETAILS.