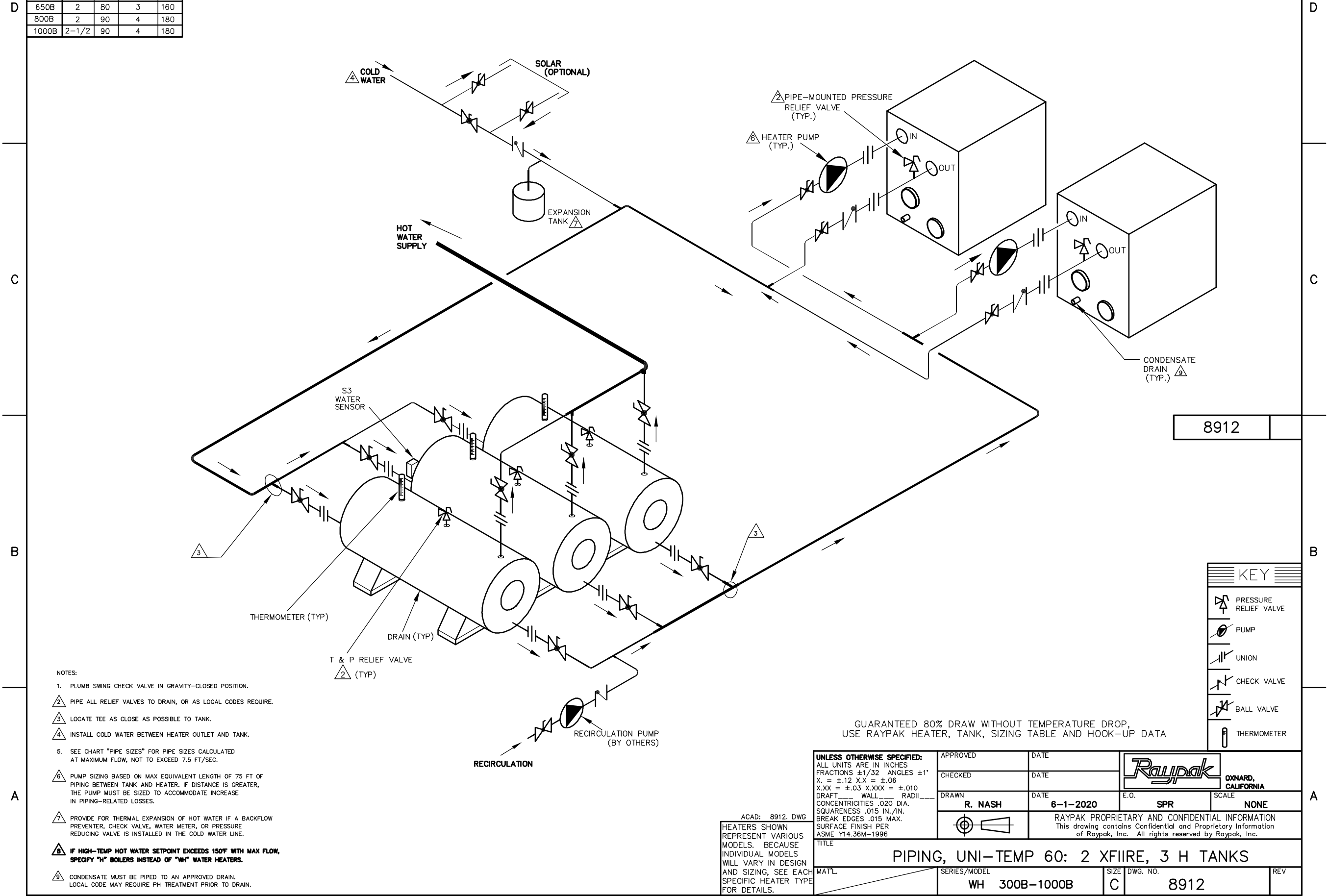


XFIIRE PIPE SIZES				
	1 UNIT PORT	MAX FLOW	2 UNITS	MAX FLOW
300B	2	38	2	76
400B	2	50	2-1/2	100
500B	2	62	2-1/2	124
650B	2	80	3	160
800B	2	90	4	180
1000B	2-1/2	90	4	180

THIS PIPING DIAGRAM IS RAYPAK'S RECOMMENDATION AND IS NOT INTENDED TO REPLACE AN ENGINEERING PIPING SYSTEM DESIGN BY A PROFESSIONAL ENGINEER.

REVISIONS						
REV	ZONE	DESCRIPTION	E.O.	BY	DATE	CHECK
0		INITIAL RELEASE.		RAN	6-1-20	



- NOTES:
1. PLUMB SWING CHECK VALVE IN GRAVITY-CLOSED POSITION.
 2. PIPE ALL RELIEF VALVES TO DRAIN, OR AS LOCAL CODES REQUIRE.
 3. LOCATE TEE AS CLOSE AS POSSIBLE TO TANK.
 4. INSTALL COLD WATER BETWEEN HEATER OUTLET AND TANK.
 5. SEE CHART "PIPE SIZES" FOR PIPE SIZES CALCULATED AT MAXIMUM FLOW, NOT TO EXCEED 7.5 FT/SEC.
 6. PUMP SIZING BASED ON MAX EQUIVALENT LENGTH OF 75 FT OF PIPING BETWEEN TANK AND HEATER. IF DISTANCE IS GREATER, THE PUMP MUST BE SIZED TO ACCOMMODATE INCREASE IN PIPING-RELATED LOSSES.
 7. PROVIDE FOR THERMAL EXPANSION OF HOT WATER IF A BACKFLOW PREVENTER, CHECK VALVE, WATER METER, OR PRESSURE REDUCING VALVE IS INSTALLED IN THE COLD WATER LINE.
 8. IF HIGH-TEMP HOT WATER SETPOINT EXCEEDS 150°F WITH MAX FLOW, SPECIFY "H" BOILERS INSTEAD OF "WH" WATER HEATERS.
 9. CONDENSATE MUST BE PIPED TO AN APPROVED DRAIN. LOCAL CODE MAY REQUIRE PH TREATMENT PRIOR TO DRAIN.

8912

KEY	
	PRESSURE RELIEF VALVE
	PUMP
	UNION
	CHECK VALVE
	BALL VALVE
	THERMOMETER

GUARANTEED 80% DRAW WITHOUT TEMPERATURE DROP, USE RAYPAK HEATER, TANK, SIZING TABLE AND HOOK-UP DATA

UNLESS OTHERWISE SPECIFIED: ALL UNITS ARE IN INCHES FRACTIONS ±1/32 ANGLES ±1° X.X = ±.12 X.XX = ±.06 X.XX = ±.03 X.XXX = ±.010 DRAFT WALL RADII CONCENTRICITIES .020 DIA. SQUARENESS .015 IN./IN. BREAK EDGES .015 MAX. SURFACE FINISH PER ASME Y14.36M-1996		APPROVED	DATE		OXNARD, CALIFORNIA
CHECKED	DATE	SCALE	SCALE		
DRAWN	DATE	E.O.	SCALE	RAYPAK PROPRIETARY AND CONFIDENTIAL INFORMATION This drawing contains Confidential and Proprietary Information of Raypak, Inc. All rights reserved by Raypak, Inc.	
TITLE		REV			
PIPING, UNI-TEMP 60: 2 XFIIRE, 3 H TANKS		REV			
MATL.	SERIES/MODEL	SIZE	DWG. NO.	REV	
	WH 300B-1000B	C	8912		

ACAD: 8912.DWG
HEATERS SHOWN REPRESENT VARIOUS MODELS. BECAUSE INDIVIDUAL MODELS WILL VARY IN DESIGN AND SIZING, SEE EACH SPECIFIC HEATER TYPE FOR DETAILS.