

PUMP DATA	
FACTORY	FIELD
MODEL :	
H.P. :	
AMPS. :	

**NOTES: \* USE GROUND CONNECTION PROVIDED. FAILURE TO PROVIDE PROPER GROUND MAY RESULT IN LOCK-OUT. ALL GROUND  $\pm$  TERMINATE AT  $\text{\textcircled{SPG}}$ .**

\*\* PUMP USED MUST BE RATED 10 AMPS MAX OR 3/4 HP MAX. PUMP DELAY ADJUSTABLE BETWEEN 3 AND 10 MINUTES.

\*\*\* FOR TWO STAGE OPERATION OR MULTIPLE BOILER SYSTEM, SEE INSTALLATION AND OPERATING INSTRUCTION MANUAL.

$\text{\textcircled{A}}$  -  $\text{\textcircled{E}}$  CONNECTIONS FOR OPTIONAL E-4 ALARM PANEL.

CHECK CONTROLS PROVIDED (WIRED AS SHOWN) REPLACE WIRING WITH 105°C WIRE ONLY

CHECKED BY:	
APPROVED BY:	
ORIG E.O. 1781	02/17/84
CHG E.O. 5764	06/28/17

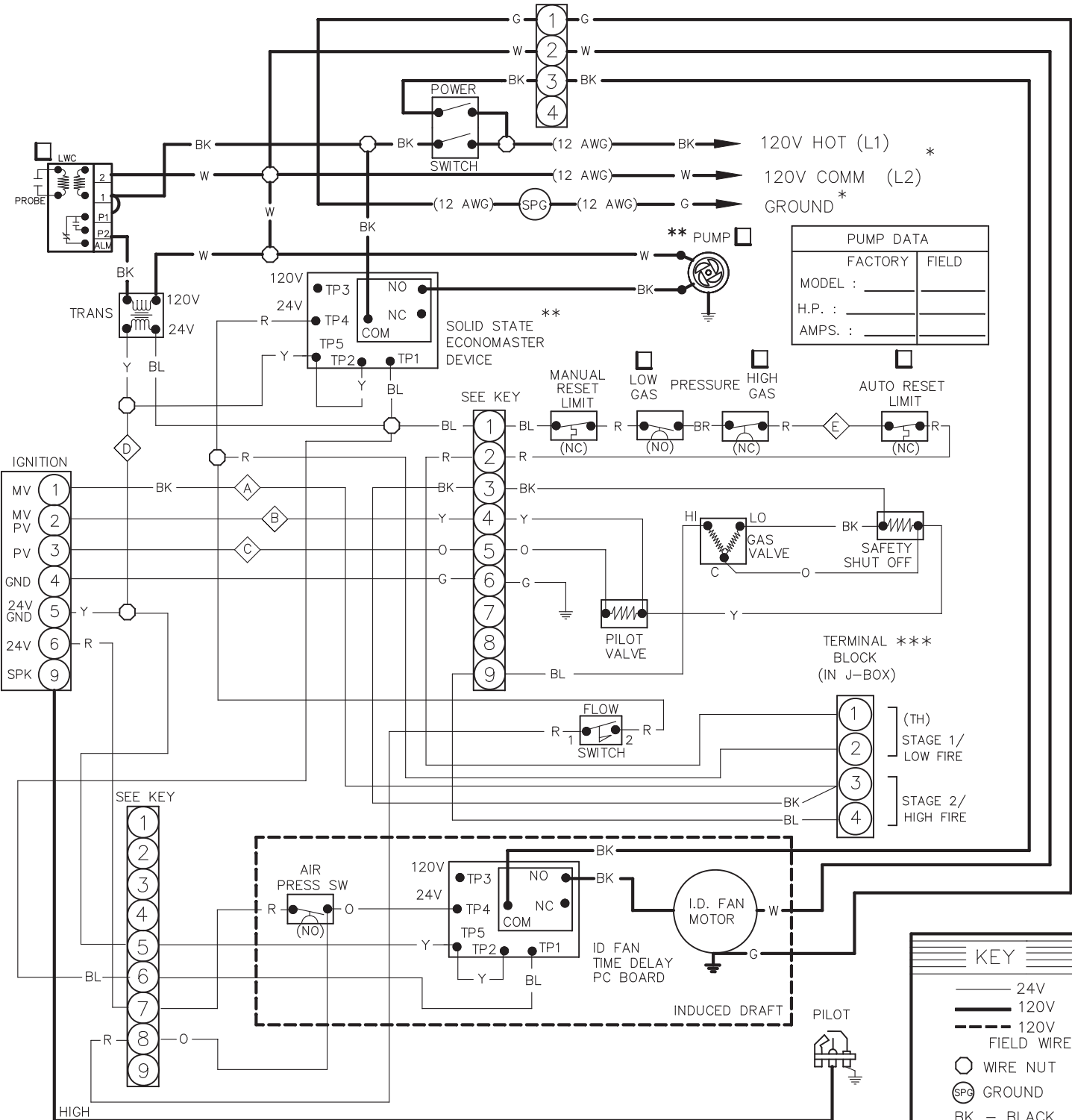
**WIRING DIAGRAM IID ECONOMASTER FIRING MODE - 2 STAGE**

BOILER INPUTS: 726,000 THRU 1,826,000 BTUH

BOILER SIZE: 724-1826 BOILER TYPE: H3, W3, WH3

KEY		
—	24V	
—	120V	
- - -	120V	FIELD WIRE
$\text{\textcircled{O}}$	WIRE NUT	
$\text{\textcircled{SPG}}$	GROUND	
BK	- BLACK	
BR	- BROWN	
R	- RED	
O	- ORANGE	
Y	- YELLOW	
G	- GREEN	
BL	- BLUE	
V	- VIOLET	
W	- WHITE	
PLUG (ACTUAL)		
$\text{\textcircled{3}}$	$\text{\textcircled{2}}$	$\text{\textcircled{1}}$
$\text{\textcircled{6}}$	$\text{\textcircled{5}}$	$\text{\textcircled{4}}$
$\text{\textcircled{9}}$	$\text{\textcircled{8}}$	$\text{\textcircled{7}}$
FRONT VIEW		





**NOTES:** \* USE GROUND CONNECTION PROVIDED. FAILURE TO PROVIDE PROPER GROUND MAY RESULT IN LOCK-OUT. ALL GROUND  $\perp$  TERMINATE AT  $\text{SPG}$ .

\*\* PUMP USED MUST BE RATED 10 AMPS MAX OR 3/4 HP MAX. PUMP DELAY ADJUSTABLE BETWEEN 3 & 10 MINUTES.  
 \*\*\*FOR TWO STAGE OPERATION OR MULTIPLE BOILER SYSTEM, SEE INSTALLATION AND OPERATING INSTRUCTION MANUAL.  
 ⬠-⬠ CONNECTIONS FOR OPTIONAL E-4 ALARM PANEL.  
 ✓ CHECK CONTROLS PROVIDED (WIRED AS SHOWN)  
 REPLACE WIRING WITH 105°C WIRE ONLY

CHECKED BY:	
APPROVED BY:	
ORIG E.O.	1781
	02/17/84
CHG E.O.	5764
	06/28/17
<b>Raupak</b>	

**WIRING DIAGRAM IID ECONO INDUCED DRAFT FIRING MODE - 2 STAGE**

BOILER INPUTS: 726,000 THRU 1,826,000 BTUH

BOILER SIZE: 724-1826 BOILER TYPE: H3, W3, WH3

**KEY**

- 24V
- 120V
- - - 120V FIELD WIRE
- WIRE NUT
- ⊙ SPG GROUND
- BK - BLACK
- BR - BROWN
- R - RED
- O - ORANGE
- Y - YELLOW
- G - GREEN
- BL - BLUE
- V - VIOLET
- W - WHITE

PLUG (ACTUAL)

3	2	1
6	5	4
9	8	7

FRONT VIEW