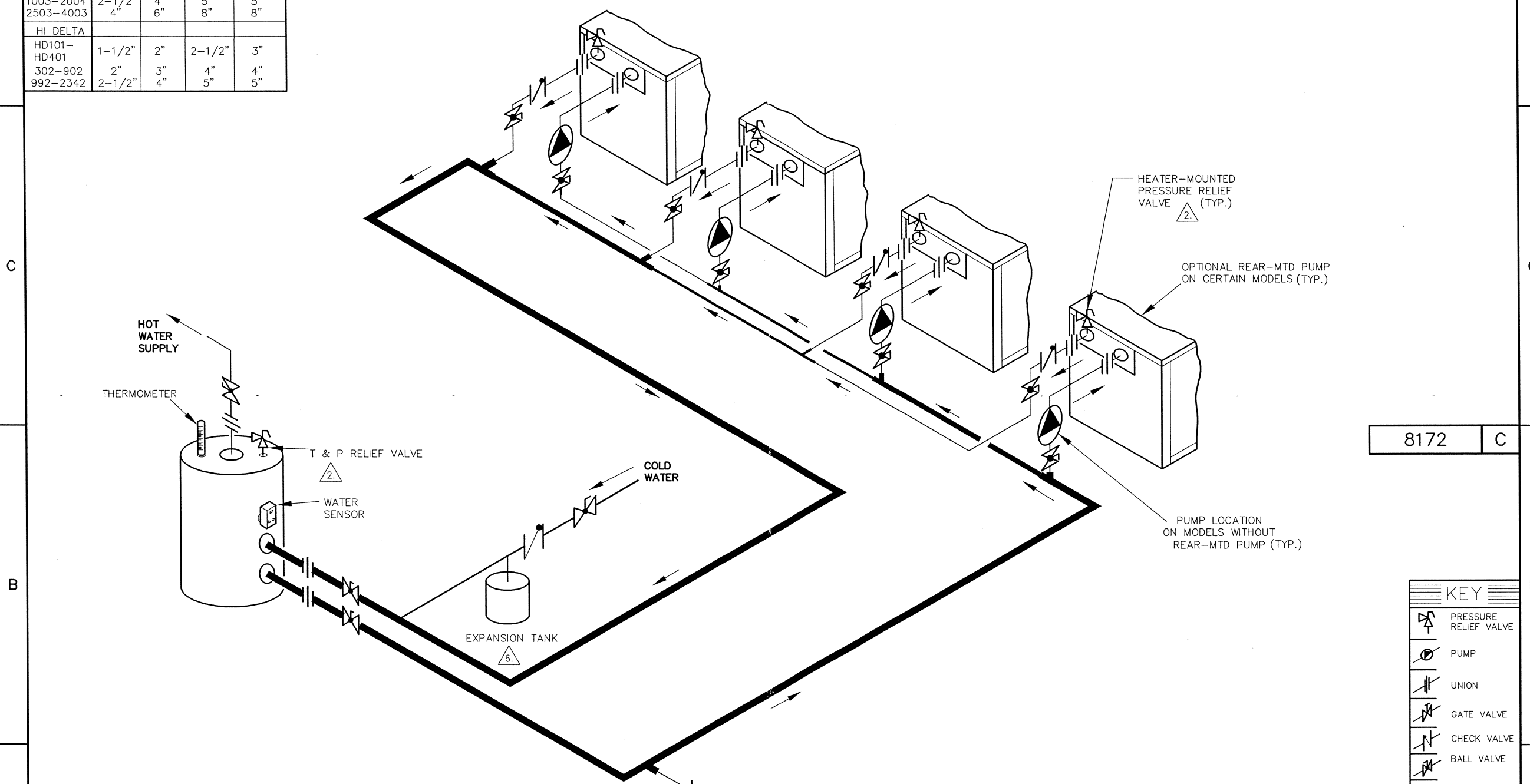


PIPE SIZES				
	UNIT	2 UNITS	3 UNITS	4 UNITS
RAYTHERM				
181-401	1-1/2"	2"	2-1/2"	3"
514-824	2"	3"	4"	5"
926-1826	2-1/2"	3"	4"	5"
2100-4001	3"	4"	6"	8"
MVB				
503-754	2"	3"	4"	5"
1003-2004	2-1/2"	4"	5"	5"
2503-4003	4"	6"	8"	8"
HI DELTA				
HD101- HD401	1-1/2"	2"	2-1/2"	3"
302-902	2"	3"	4"	4"
992-2342	2-1/2"	4"	5"	5"

THIS PIPING DIAGRAM IS RAYPAK'S RECOMMENDATION AND IS NOT INTENDED TO REPLACE AN ENGINEERED PIPING SYSTEM DESIGNED BY A PROFESSIONAL ENGINEER.

REVISIONS					
REV	ZONE	DESCRIPTION	E.O.	BY	DATE
C		ADDED HD101-401, 2503-4003 USAGE. REMOVED 122-322 USAGE. RELOCATED RECIRC LINE. UPDATED NOTES 4 & 5. NOTE 7 FROM 175F TO 150F. FROM B SIZE TO C SIZE.		RAN	8-14-17



8172 C

KEY	
	PRESSURE RELIEF VALVE
	PUMP
	UNION
	GATE VALVE
	CHECK VALVE
	BALL VALVE
	THERMOMETER

- NOTES:
1. PLUMB SWING CHECK VALVE IN GRAVITY-CLOSED POSITION.
 2. PIPE ALL RELIEF VALVES TO DRAIN, OR AS LOCAL CODES REQUIRE.
 3. INSTALL COLD WATER BETWEEN HEATER OUTLET AND TANK.
 4. SEE CHART "PIPE SIZES" FOR PIPE SIZES, CALCULATED AT MAXIMUM FLOW, NOT TO EXCEED 7.5 FT/SEC.
 5. STANDARD PUMP SIZING BASED ON 75 EQUIVALENT FEET OF PIPING. IF DISTANCE IS GREATER, THE PUMP MUST BE SIZED TO ACCOMMODATE INCREASE IN PIPING-RELATED LOSSES.
 6. PROVIDE FOR THERMAL EXPANSION OF HOT WATER IF A BACKFLOW PREVENTER, CHECK VALVE, WATER METER OR PRESSURE-REDUCING VALVE IS INSTALLED IN THE COLD WATER LINE.
 7. IF HOT WATER SETPOINT EXCEEDS 150F, SPECIFY "H" BOILERS INSTEAD OF "WH" WATER HEATERS.

GUARANTEED 80% DRAW WITHOUT TEMPERATURE DROP, USE RAYPAK BOILER, TANK, SIZING TABLE AND HOOK-UP DATA

<small>UNLESS OTHERWISE SPECIFIED: ALL UNITS ARE IN INCHES FRACTIONS 1/32 ANGLES ±1° X = ±.12 XX = ±.06 XXX = ±.03 XXXX = ±.010 DRAFT WALL RADII CONCENTRICITIES .020 DIA. SQUARENESS .015 IN./IN. BREAK EDGES .015 MAX. SURFACE FINISH PER ASME Y14.36M-1996</small>		APPROVED DATE 8/15/17	
CHECKED D BALDWIN	DATE 1-14-09	E.O. SPR	SCALE NONE
DRAWN D BALDWIN	DATE 1-14-99	RAYPAK PROPRIETARY AND CONFIDENTIAL INFORMATION <small>This drawing contains Confidential and Proprietary Information of Raypak, Inc. All rights reserved by Raypak, Inc.</small>	
TITLE PIPING, UNI-TEMP 80: 4 HEATERS, 1 V TANK			
MAT'L WH	SERIES/MODEL C	SIZE DWG. NO. 8172	REV C

ACAD: 8172.DWG
HEATERS SHOWN REPRESENT VARIOUS MODELS. BECAUSE INDIVIDUAL MODELS WILL VARY IN DESIGN AND SIZING, SEE EACH SPECIFIC HEATER TYPE FOR DETAILS.