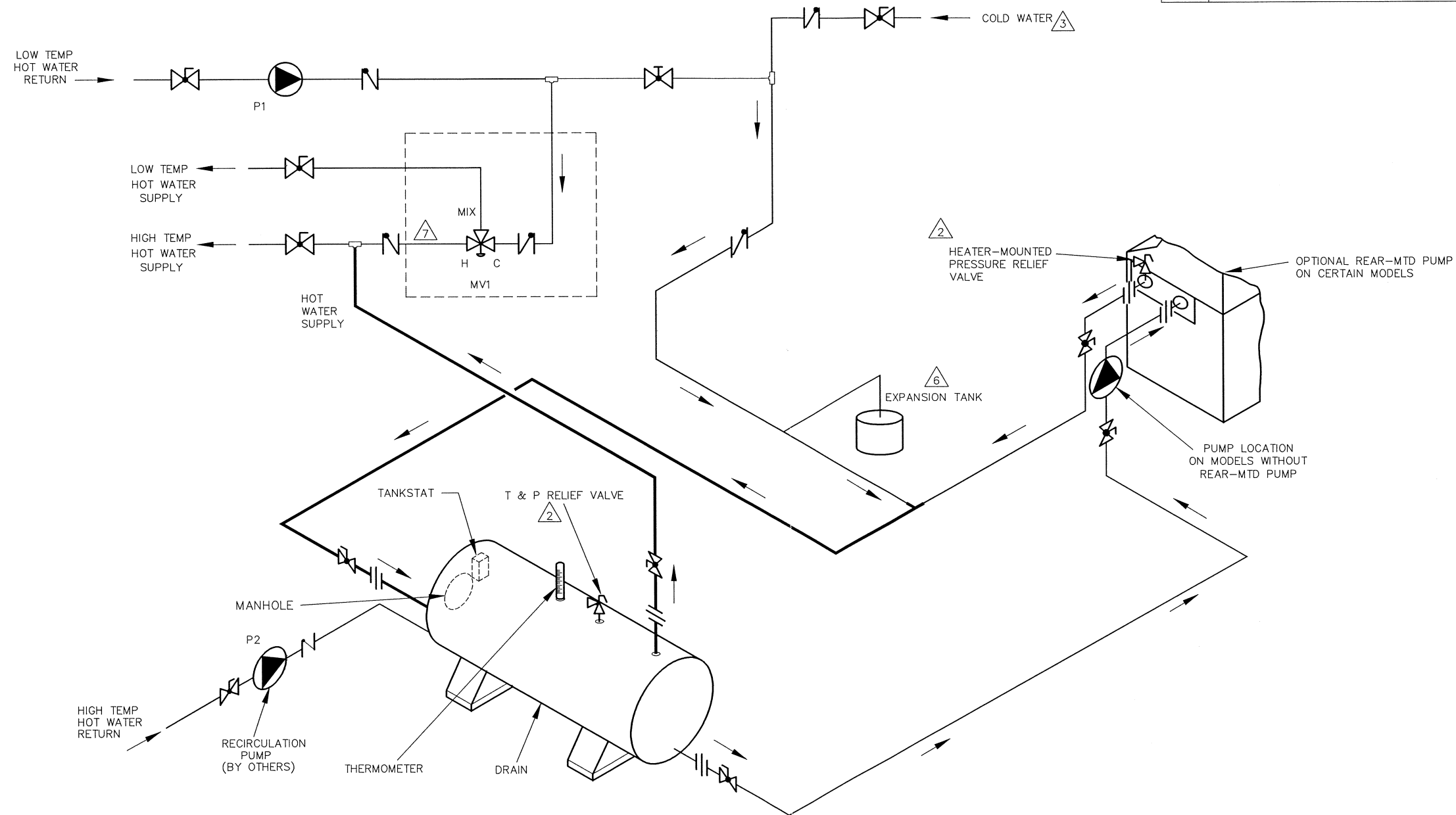


PIPE SIZES		
	HEATER	MAIN
RAYTHERM		
133	1-1/4"	1-1/2"
181-401	1-1/2"	2"
514-824	2"	2-1/2"
926-1826	2-1/2"	3"
2100-4001	3"	4"
MVB		
503-754	2"	2-1/2"
1003-2004	2-1/2"	3"
2503-4003	4"	5"
HI DELTA		
HD101-HD401	1-1/2"	2"
302-902	2"	2-1/2"
992-2342	2-1/2"	3"

THIS PIPING DIAGRAM IS RAYPAK'S RECOMMENDATION AND IS NOT INTENDED TO REPLACE AN ENGINEERED PIPING SYSTEM DESIGNED BY A PROFESSIONAL ENGINEER.

REVISIONS				
REV	DESCRIPTION	E.O.	BY	DATE
6	ADDED 2503-4003 USAGE.		KA	6-11-14



KEY	
	BALANCING VALVE
	PRESSURE RELIEF VALVE
	PUMP
	UNION
	CHECK VALVE
	BALL VALVE
	THERMOMETER

GUARANTEED 60% DRAW WITHOUT TEMPERATURE DROP,
USE RAYPAK HEATER, TANK, SIZING TABLE AND HOOK-UP DATA

NOTES:

- PLUMB SWING CHECK VALVE IN GRAVITY-CLOSED POSITION.
- PIPE ALL RELIEF VALVES TO DRAIN, OR AS LOCAL CODES REQUIRE.
- INSTALL COLD WATER BETWEEN HEATER OUTLET AND TANK.
- SEE CHART "PIPE SIZES" FOR PIPE SIZES, CALCULATED AT MAXIMUM FLOW, NOT TO EXCEED 7.5 FT/SEC.
- STANDARD PUMP SIZING BASED ON 75 EQUIVALENT FEET OF PIPING. IF DISTANCE IS GREATER, THE PUMP MUST BE SIZED TO ACCOMMODATE INCREASE IN PIPING-RELATED LOSSES.
- PROVIDE FOR THERMAL EXPANSION OF HOT WATER IF A BACKFLOW PREVENTER, CHECK VALVE, WATER METER OR PRESSURE-REDUCING VALVE IS INSTALLED IN THE COLD WATER LINE.
- REFER TO INSTALLATION INSTRUCTIONS FOR MANUFACTURER OF 3-WAY MIXING VALVE.
- IF HIGH TEMP HOT WATER SETPOINT EXCEEDS 150° F, SPECIFY 'H' BOILERS INSTEAD OF 'WH' WATER HEATERS.

ACAD: 8107.DWG

HEATERS SHOWN REPRESENT VARIOUS MODELS. BECAUSE INDIVIDUAL MODELS WILL VARY IN DESIGN AND SIZING, SEE EACH SPECIFIC HEATER TYPE FOR DETAILS.

8107	UNLESS OTHERWISE SPECIFIED: ALL UNITS ARE IN INCHES FRACTIONS ±1/32 ANGLES ±1° X.X = ±.12 X.XX = ±.06 X.XX = ±.03 X.XXX = ±.010 DRAFT___ WALL___ RADII___ CONCENTRICITIES .020 DIA. SQUARENESS .015 IN./IN. BREAK EDGES .015 MAX. SURFACE FINISH PER ASME Y14.36M-1996	APPROVED 	DATE 6-18-14		OXNARD, CALIFORNIA
	CHECKED D BALDWIN	DATE 8-18-97	E.O.		
		DRAWN D BALDWIN	DATE 6-18-97	SPR	NONE
			RAYPAK PROPRIETARY AND CONFIDENTIAL INFORMATION This drawing contains Confidential and Proprietary Information of Raypak, Inc. All rights reserved by Raypak, Inc.		
	TITLE PIPING, UNI-TEMP 60: 1 HEATER, 1 H TANK, 2 TEMP.				
6	MAT'L.	SERIES/MODEL WH	SIZE B	DWG. NO. 8107	REV 6