

MINIMUM PIPE SIZES		
	BRANCH	MAIN
RAYTHERM		
133	1-1/4"	2-1/2"
181-401	1-1/2"	3"
514-824	2"	4"
926-1826	2-1/2"	4"
2100-4001	3"	6"
MVB		
503-753	2"	4"
1003-2003	2-1/2"	5"
504-754	2"	4"
1104-2004	2-1/2"	5"
HI DELTA		
122-202	1-1/4"	2-1/2"
242-322	1-1/2"	3"
302-902	2"	4"
992-2342	2-1/2"	5"
DELTA LTD		
399-949	2"	4"
989-2339	2-1/2"	5"

THIS PIPING DIAGRAM IS RAYPAK'S RECOMMENDATION AND IS NOT INTENDED TO REPLACE AN ENGINEERED PIPING SYSTEM DESIGNED BY A PROFESSIONAL ENGINEER.

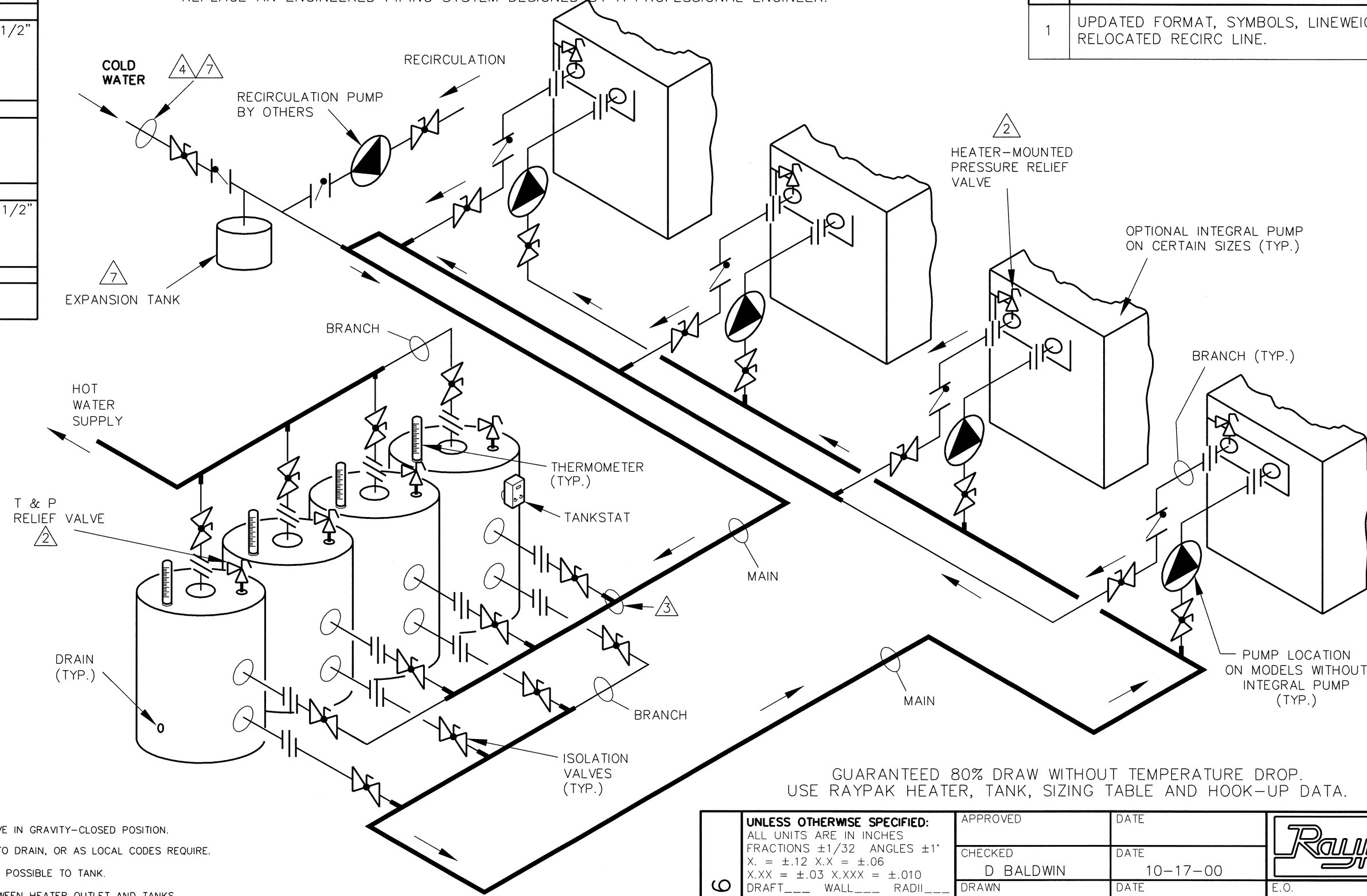
8266					
REVISIONS					
REV	DESCRIPTION	E.O.	BY	DATE	CHECK
1	UPDATED FORMAT, SYMBOLS, LINEWEIGHT. RELOCATED RECIRC LINE.		DRB	11-5-08	

B

B

A

A



KEY	
	PRESSURE RELIEF VALVE
	PUMP
	UNION
	CHECK VALVE
	BALL VALVE
	THERMOMETER

GUARANTEED 80% DRAW WITHOUT TEMPERATURE DROP. USE RAYPAK HEATER, TANK, SIZING TABLE AND HOOK-UP DATA.

- NOTES:
1. PLUMB SWING CHECK VALVE IN GRAVITY-CLOSED POSITION.
 2. PIPE ALL RELIEF VALVES TO DRAIN, OR AS LOCAL CODES REQUIRE.
 3. LOCATE TEE AS CLOSE AS POSSIBLE TO TANK.
 4. INSTALL COLD WATER BETWEEN HEATER OUTLET AND TANKS.
 5. SEE CHART "MINIMUM PIPE SIZES" FOR MINIMUM PIPE SIZES. PIPE SIZES CALCULATED AT MAXIMUM FLOW.
 6. SIZING BASED ON HEATER AND TANK BEING PLACED FIVE FEET APART, IF DISTANCE IS GREATER, THE PUMP MUST BE SIZED TO ACCOMMODATE INCREASE IN PIPING-RELATED LOSSES.
 7. PROVIDE FOR THERMAL EXPANSION OF HOT WATER IF A BACKFLOW PREVENTER, CHECK VALVE, WATER METER OR PRESSURE-REDUCING VALVE IS INSTALLED IN THE COLD WATER LINE.

ACAD: 8266.DWG
HEATERS SHOWN REPRESENT VARIOUS MODELS. BECAUSE INDIVIDUAL MODELS WILL VARY IN DESIGN AND SIZING, SEE EACH SPECIFIC HEATER TYPE FOR DETAILS.

8266	UNLESS OTHERWISE SPECIFIED: ALL UNITS ARE IN INCHES FRACTIONS ±1/32 ANGLES ±1° X. = ±.12 X.X = ±.06 X.XX = ±.03 X.XXX = ±.010 DRAFT ___ WALL ___ RADII ___ CONCENTRICITIES .020 DIA. SQUARENESS .015 IN./IN. BREAK EDGES .015 MAX. SURFACE FINISH PER ASME Y14.36M-1996		APPROVED	DATE	
	CHECKED	DATE	OXNARD, CALIFORNIA		
	DRAWN	DATE	E.O.	SCALE	
	TITLE		SIZE	THIS DRAWING SUBMITTED UNDER CONFIDENTIAL RELATIONSHIP, AS IT EMBODIES PROPRIETARY INFORMATION, WITH ALL RIGHTS RESERVED BY RAYPAK, INC.	
1	MAT'L.	SERIES/MODEL	DWG. NO.	REV	
		WH 133-4001	8266	1	