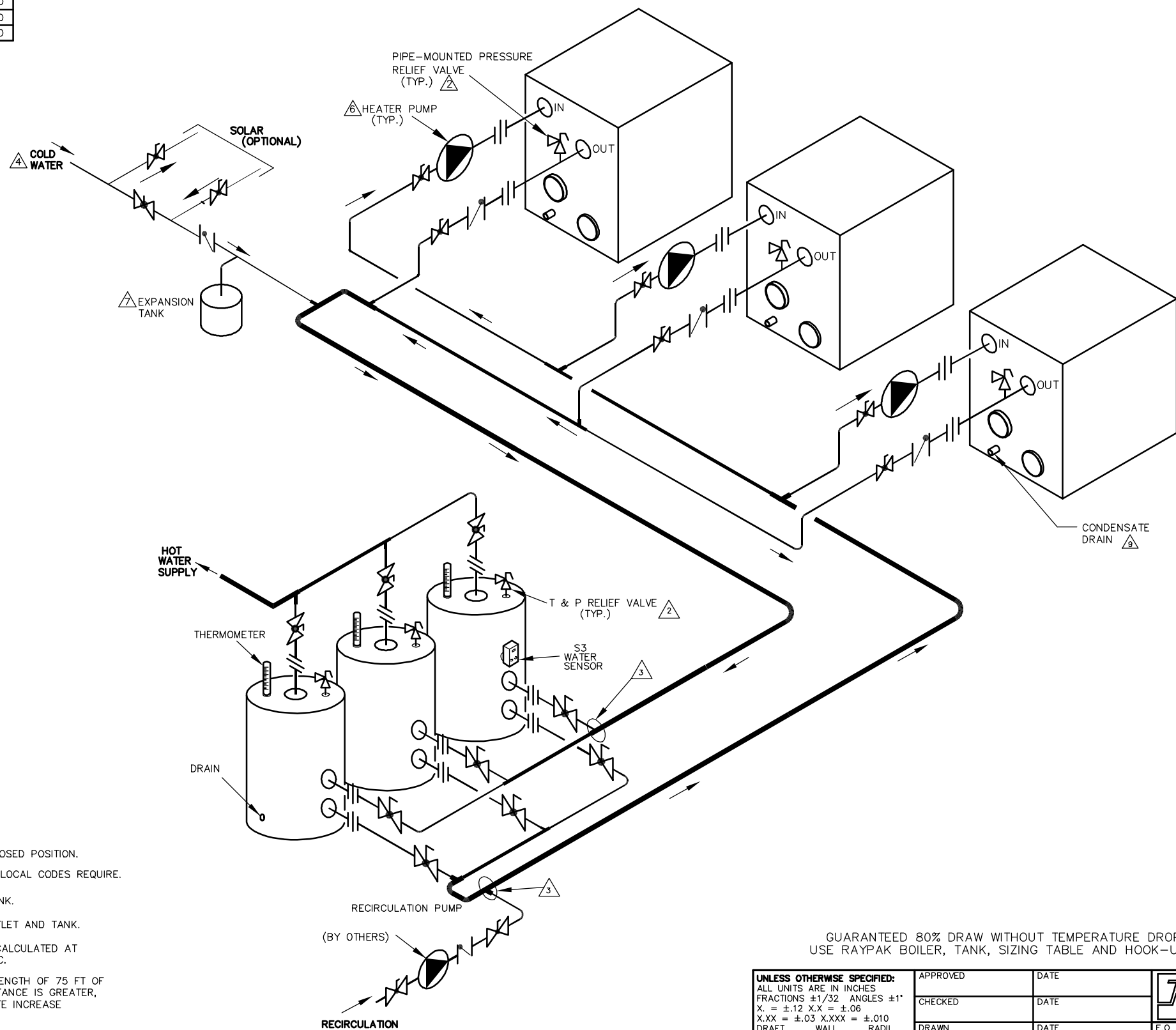


XFIIRE PIPE SIZES						
	1 UNIT	MAX	2 UNITS	MAX	3 UNITS	MAX
	PORT	FLOW	MAX	FLOW	2-1/2	FLOW
300B	2	38	2	76	2-1/2	114
400B	2	50	2-1/2	100	3	150
500B	2	62	2-1/2	124	3	186
650B	2	80	3	160	4	240
800B	2	90	4	180	4	270
1000B	2-1/2	90	4	180	4	270

THIS PIPING DIAGRAM IS RAYPAK'S RECOMMENDATION AND IS NOT INTENDED TO REPLACE AN ENGINEERED PIPING SYSTEM DESIGNED BY A PROFESSIONAL ENGINEER.

REVISIONS						
REV	ZONE	DESCRIPTION	E.O.	BY	DATE	CHECK
0		INITIAL RELEASE. SUPERSEDES 8781.		RAN	3-9-20	



8906 0

NOTES:

1. PLUMB SWING CHECK VALVE IN GRAVITY-CLOSED POSITION.
2. PIPE ALL RELIEF VALVES TO DRAIN, OR AS LOCAL CODES REQUIRE.
3. LOCATE TEE AS CLOSE AS POSSIBLE TO TANK.
4. INSTALL COLD WATER BETWEEN HEATER OUTLET AND TANK.
5. SEE CHART "PIPE SIZES" FOR PIPE SIZES, CALCULATED AT MAXIMUM FLOW, NOT TO EXCEED 7.5 FT/SEC.
6. PUMP SIZING BASED ON MAX EQUIVALENT LENGTH OF 75 FT OF PIPING BETWEEN TANK AND HEATER. IF DISTANCE IS GREATER, THE PUMP MUST BE SIZED TO ACCOMMODATE INCREASE IN PIPING-RELATED LOSSES.
7. PROVIDE FOR THERMAL EXPANSION OF HOT WATER IF A BACKFLOW PREVENTER, CHECK VALVE, WATER METER OR PRESSURE-REDUCING VALVE IS INSTALLED IN THE COLD WATER LINE.
8. IF HOT WATER SETPOINT EXCEEDS 150°F WITH MAX FLOW, SPECIFY TYPE "H" - HIGH TEMPERATURE POTABLE MODEL INSTEAD OF "WH" WATER HEATERS.
9. CONDENSATE MUST BE PIPED TO AN APPROVED DRAIN. LOCAL CODE MAY REQUIRE PH TREATMENT PRIOR TO DRAIN.

KEY

- PRESSURE RELIEF VALVE
- PUMP
- UNION
- BALL VALVE
- CHECK VALVE
- THERMOMETER

GUARANTEED 80% DRAW WITHOUT TEMPERATURE DROP, USE RAYPAK BOILER, TANK, SIZING TABLE AND HOOK-UP DATA

UNLESS OTHERWISE SPECIFIED:  
 ALL UNITS ARE IN INCHES  
 FRACTIONS ±1/32 ANGLES ±1°  
 X.X = ±.12 X.XX = ±.06  
 X.XX = ±.03 X.XXX = ±.010  
 DRAFT WALL RADII  
 CONCENTRICITIES .020 DIA.  
 SQUARENESS .015 IN./IN.  
 BREAK EDGES .015 MAX.  
 SURFACE FINISH PER  
 ASME Y14.36M-1996

APPROVED	DATE
CHECKED	DATE
DRAWN <b>R NASH</b>	DATE <b>3-9-2020</b>

**Raypak** OXNARD, CALIFORNIA  
 E.O. **SPR** SCALE **NONE**

RAYPAK PROPRIETARY AND CONFIDENTIAL INFORMATION  
 This drawing contains Confidential and Proprietary Information of Raypak, Inc. All rights reserved by Raypak, Inc.

ACAD: 8906.DWG  
 HEATERS SHOWN REPRESENT VARIOUS MODELS. BECAUSE INDIVIDUAL MODELS WILL VARY IN DESIGN AND SIZING, SEE EACH SPECIFIC HEATER TYPE FOR DETAILS.

TITLE <b>PIPING, UNI-TEMP 80: 3 XFIIRE, 3 V TANKS</b>			
MAT'L.	SERIES/MODEL <b>WH</b>	SIZE DWG. NO. <b>C 8906</b>	REV <b>0</b>