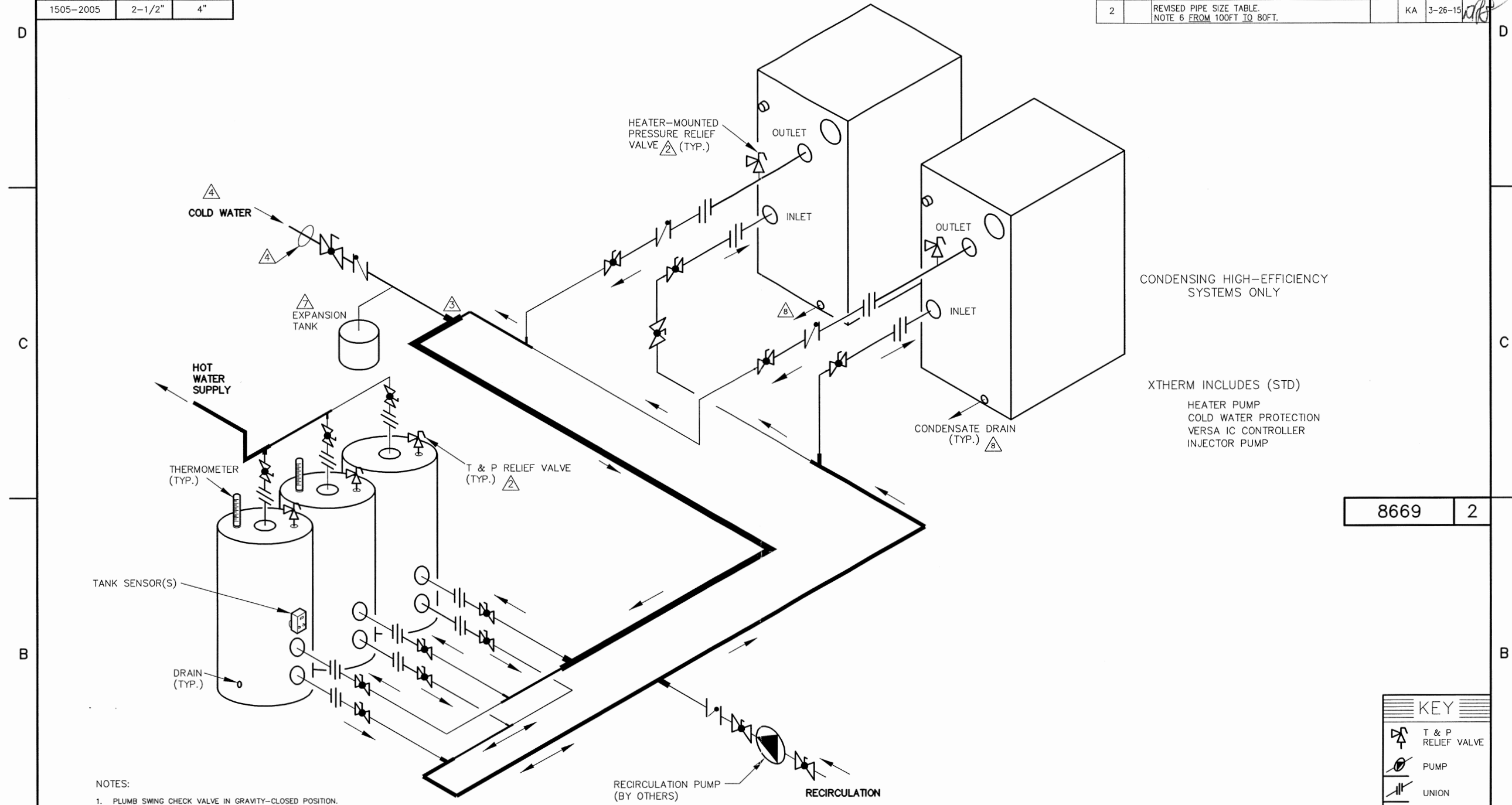


PIPE SIZES		
	1 UNIT	2 UNITS
1005	2-1/2"	3"
1505-2005	2-1/2"	4"

THIS PIPING DIAGRAM IS RAYPAK'S RECOMMENDATION AND IS NOT INTENDED TO REPLACE AN ENGINEERED PIPING SYSTEM DESIGNED BY A PROFESSIONAL ENGINEER.

REVISIONS						
REV	ZONE	DESCRIPTION	E.O.	BY	DATE	CHECK
1		RELOCATED COLD WATER INLET, REVISED NOTE 5. ADDED NOTE 9.		KA	3-25-14	DRB
2		REVISED PIPE SIZE TABLE, NOTE 6 FROM 100FT TO 80FT.		KA	3-26-15	DRB



CONDENSING HIGH-EFFICIENCY SYSTEMS ONLY

XTHERM INCLUDES (STD)
 HEATER PUMP
 COLD WATER PROTECTION
 VERSA IC CONTROLLER
 INJECTOR PUMP

8669 2

NOTES:

1. PLUMB SWING CHECK VALVE IN GRAVITY-CLOSED POSITION.
2. PIPE ALL RELIEF VALVES TO DRAIN, OR AS LOCAL CODES REQUIRE.
3. LOCATE TEE AS CLOSE AS POSSIBLE TO TANK.
4. INSTALL COLD WATER BETWEEN HEATER OUTLET AND TANK. PIPING FROM COLD WATER INLET TO TANK MUST ACCOMMODATE HEATER FLOW PLUS EXPECTED COLD WATER FLOW.
5. SEE CHART "PIPE SIZES" FOR PIPE SIZES, CALCULATED AT MAXIMUM FLOW, NOT TO EXCEED 7.5 FT/SEC.
6. PIPE SIZING BASED ON MAX EQUIVALENT LENGTH OF 80 FEET OF PIPE BETWEEN TANK AND HEATER. IF LONGER, CONSULT FACTORY FOR PROPER PIPE SIZE REQUIRED.
7. PROVIDE FOR THERMAL EXPANSION OF HOT WATER IF A BACKFLOW PREVENTER, CHECK VALVE, WATER METER, OR PRESSURE REDUCING VALVE IS INSTALLED IN THE COLD WATER LINE.
8. CONDENSATE MUST BE PIPED TO AN APPROVED DRAIN. LOCAL CODE MAY REQUIRE NEUTRALIZATION PRIOR TO DRAIN.
9. IF HOT WATER SETPOINT EXCEEDS 150°F WITH MAX FLOW, SPECIFY "H" BOILERS INSTEAD OF "WH" WATER HEATERS.

KEY	
	T & P RELIEF VALVE
	PUMP
	UNION
	CHECK VALVE
	BALL VALVE
	THERMOMETER

GUARANTEED 80% DRAW WITHOUT TEMPERATURE DROP, USE RAYPAK HEATER, TANK, SIZING TABLE AND HOOK-UP DATA

UNLESS OTHERWISE SPECIFIED: ALL UNITS ARE IN INCHES FRACTIONS ±1/32 ANGLES ±1° X.X = ±.12 X.XX = ±.06 X.XXX = ±.03 X.XXXX = ±.010 DRAFT WALL RADIUS CONCENTRICITIES .020 DIA. SQUARENESS .015 IN./IN. BREAK EDGES .015 MAX. SURFACE FINISH PER ASME Y14.36M-1996		APPROVED <i>[Signature]</i> DATE 7/24/15		OXNARD, CALIFORNIA
CHECKED S THURLKILL DATE 2-9-09	DRAWN D BALDWIN DATE 2-6-09	E.O. SPR		
HEATERS SHOWN REPRESENT VARIOUS MODELS. BECAUSE INDIVIDUAL MODELS WILL VARY IN DESIGN AND SIZING, SEE EACH SPECIFIC HEATER TYPE FOR DETAILS.		THIS DRAWING SUBMITTED UNDER CONFIDENTIAL RELATIONSHIP, AS IT EMBODIES PROPRIETARY INFORMATION, WITH ALL RIGHTS RESERVED BY RAYPAK, INC.		
TITLE PIPING, UNI-TEMP 80: 2 XTHERM, 3 V TANKS		MATERIAL WH		
SERIES/MODEL		DWG. NO. 8669		REV 2

ACAD: 8669.DWG