

PIPE SIZES

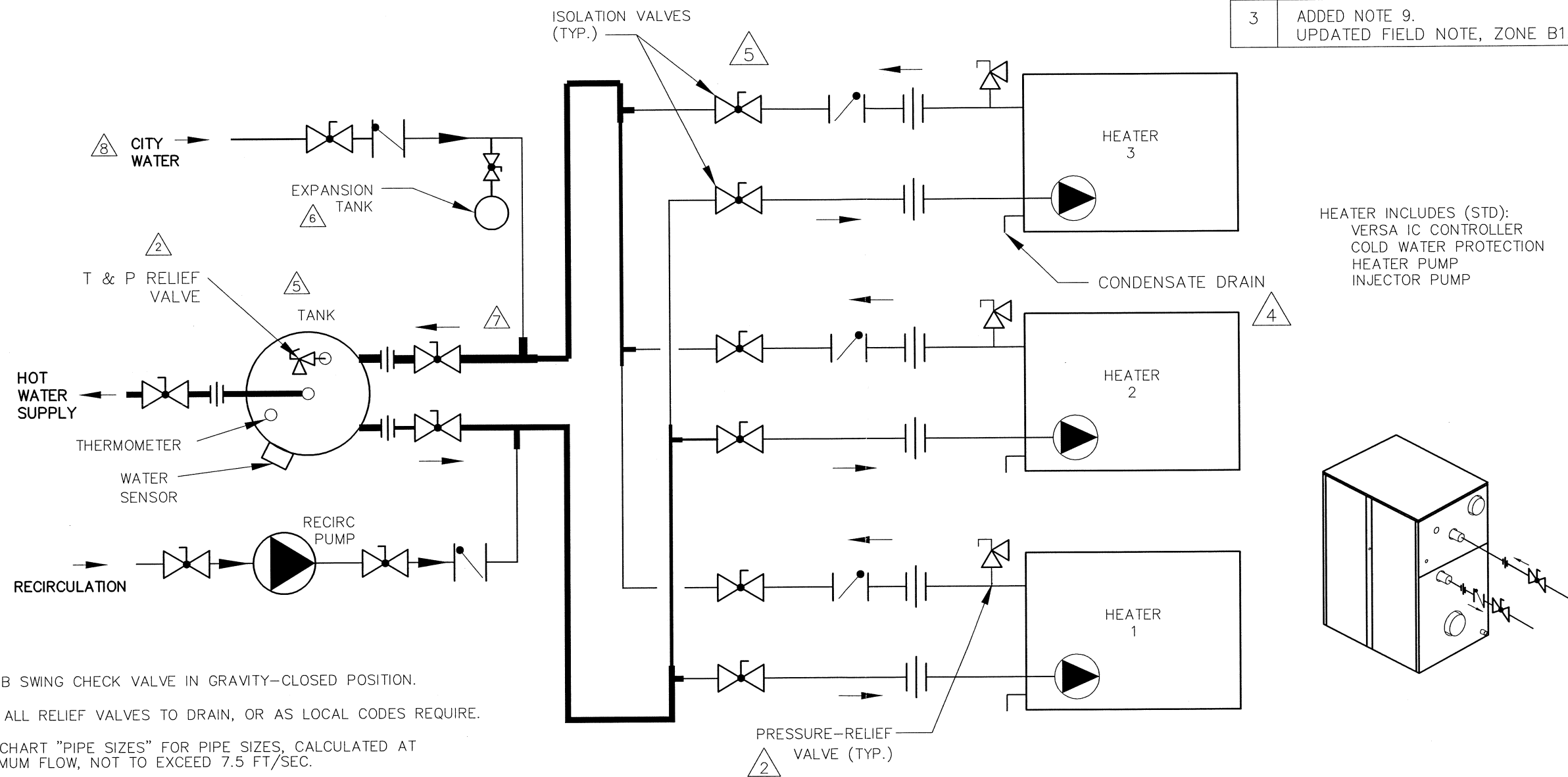
	1 UNIT	2 UNITS	3 UNITS
1005-2005	2-1/2"	4"	5"

THIS PIPING DIAGRAM IS RAYPAK'S RECOMMENDATION AND IS NOT INTENDED TO REPLACE AN ENGINEERED PIPING SYSTEM DESIGNED BY A PROFESSIONAL ENGINEER.

REVISIONS					
REV	DESCRIPTION	E.O.	BY	DATE	CHECK
1	REMOVED 2ND PRV		KA	3-7-11	DRB
2	UPDATED PIPE SIZES, NOTES 3 & 5. RELOCATED RECIRC & CW LINES.		KA	2-26-14	DRB
3	ADDED NOTE 9. UPDATED FIELD NOTE, ZONE B1.		KA	3-26-15	AKB

B

B



HEATER INCLUDES (STD):
VERSA IC CONTROLLER
COLD WATER PROTECTION
HEATER PUMP
INJECTOR PUMP

KEY	
	PRESSURE RELIEF VALVE
	PUMP
	UNION
	CHECK VALVE
	BALL VALVE
	THERMOMETER

- NOTES:
1. PLUMB SWING CHECK VALVE IN GRAVITY-CLOSED POSITION.
 2. PIPE ALL RELIEF VALVES TO DRAIN, OR AS LOCAL CODES REQUIRE.
 3. SEE CHART "PIPE SIZES" FOR PIPE SIZES, CALCULATED AT MAXIMUM FLOW, NOT TO EXCEED 7.5 FT/SEC.
 4. PIPE CONDENSATE DRAIN TO DISCHARGE PER LOCAL CODE, OR NEUTRALIZE AND DRAIN TO DISCHARGE PER LOCAL CODE.
 5. STANDARD PIPE SIZING BASED ON 80 EQUIVALENT FEET OF PIPING. IF DISTANCE IS GREATER, THE PIPE MUST BE INCREASED IN SIZE TO ACCOMMODATE INCREASED PIPING-RELATED LOSSES.
 6. PROVIDE FOR THERMAL EXPANSION OF HOT WATER IF A BACKFLOW PREVENTER, CHECK VALVE, WATER METER OR PRESSURE-REDUCING VALVE IS INSTALLED IN THE COLD WATER LINE.
 7. LOCATE TEE AS CLOSE AS POSSIBLE TO TANK.
 8. IF HOT WATER SETPOINT EXCEEDS 150°F WITH MAX FLOW, SPECIFY "H" BOILERS INSTEAD OF "WH" WATER HEATERS.
 9. INSTALL COLD WATER BETWEEN HEATER OUTLET AND TANK. PIPING BETWEEN COLD WATER AND TANK MAY NEED TO BE INCREASED TO ACCOMMODATE COLD WATER FLOW.

GUARANTEED 80% DRAW WITHOUT TEMPERATURE DROP, USE RAYPAK HEATER, TANK, SIZING TABLE AND HOOK-UP DATA

ACAD: 8666.DWG

HEATERS SHOWN REPRESENT VARIOUS MODELS. BECAUSE INDIVIDUAL MODELS WILL VARY IN DESIGN AND SIZING, SEE EACH SPECIFIC HEATER TYPE FOR DETAILS.

8666	UNLESS OTHERWISE SPECIFIED: ALL UNITS ARE IN INCHES FRACTIONS ±1/32 ANGLES ±1° X.X = ±.12 X.XX = ±.06 X.XX = ±.03 X.XXX = ±.010 DRAFT ___ WALL ___ RADII ___ CONCENTRICITIES .020 DIA. SQUARENESS .015 IN./IN. BREAK EDGES .015 MAX. SURFACE FINISH PER ASME Y14.36M-1996	APPROVED 	DATE 4/22/15		OXNARD, CALIFORNIA
	CHECKED D BALDWIN	DATE 2-3-09	E.O. SPR		SCALE NONE
	DRAWN R NASH	DATE 2-2-09	RAYPAK PROPRIETARY AND CONFIDENTIAL INFORMATION This drawing contains Confidential and Proprietary Information of Raypak, Inc. All rights reserved by Raypak, Inc.		
	TITLE PIPING, UNI-TEMP 80: 3 X THERM, 1 V TANK	MAT'L.	SERIES/MODEL WH	SIZE B	DWG. NO. 8666

A

A