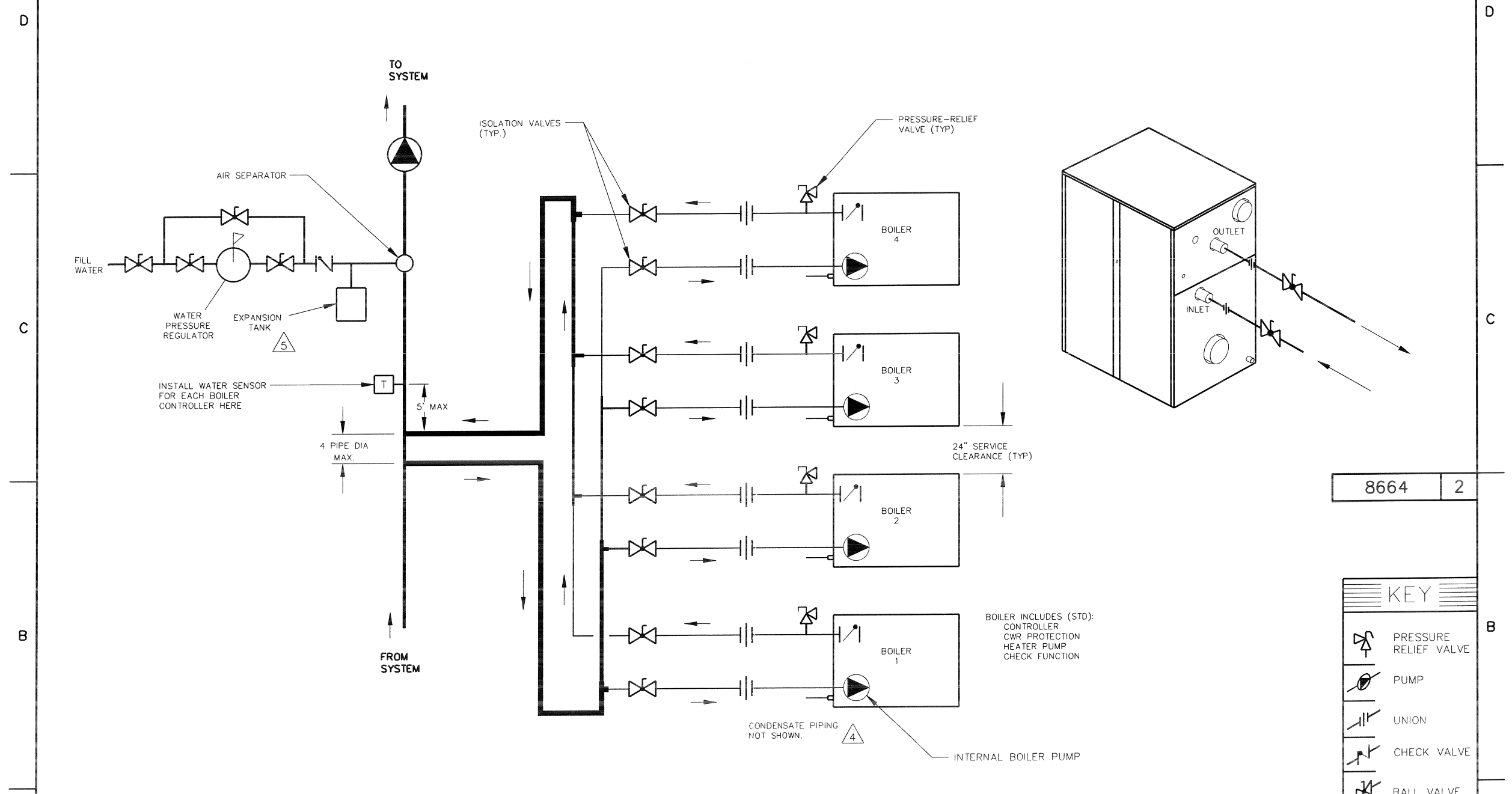


PIPE SIZES				
	1 UNIT	2 UNITS	3 UNITS	4 UNITS
1005-2005	2-1/2"	3"	4"	5"

THIS PIPING DIAGRAM IS RAYPAK'S RECOMMENDATION AND IS NOT INTENDED TO REPLACE AN ENGINEERED PIPING SYSTEM DESIGNED BY A PROFESSIONAL ENGINEER.

REVISIONS						
REV	ZONE	DESCRIPTION	E.O.	BY	DATE	CHECK
1		500 BRANCH SIZE FROM 1-1/2" TO 2"		RAN	4-30-10	DRB
2		ADDED CONNECTION DETAIL. SUPERSEDES 8685. REMOVED 2ND PRV, REVISED NOTE 5.		KA	4-20-11	<i>[Signature]</i>



8664 2

KEY	
	PRESSURE RELIEF VALVE
	PUMP
	UNION
	CHECK VALVE
	BALL VALVE
	THERMOMETER

NOTES:

- CHECK VALVE INTEGRAL TO XTERM BOILER.
 - PIPE ALL RELIEF VALVES TO DRAIN, OR AS LOCAL CODES REQUIRE.
 - PIPE SIZES MUST BE AT LEAST EQUAL TO THE BOILER INLET / OUTLET SIZE. SEE "PIPE SIZES" CHART ABOVE; COMBINED PIPE SIZES CALCULATED AT MAX FLOW.
- 4 PIPE CONDENSATE DRAIN TO DISCHARGE PER LOCAL CODE, OR NEUTRALIZE AND DRAIN TO DISCHARGE PER LOCAL CODE.
- 5 PROVIDE FOR THERMAL EXPANSION OF HOT WATER IF A BACKFLOW PREVENTER, CHECK VALVE, WATER METER OR PRESSURE-REDUCING VALVE IS INSTALLED IN THE COLD WATER LINE.

ACAD: 8664.DWG
BOILERS SHOWN REPRESENT VARIOUS MODELS. BECAUSE INDIVIDUAL MODELS WILL VARY IN DESIGN AND SIZING, SEE EACH SPECIFIC BOILER TYPE FOR DETAILS.

UNLESS OTHERWISE SPECIFIED: ALL UNITS ARE IN INCHES FRACTIONS ±1/32 ANGLES ±1° X.X = ±.12 X.XX = ±.06 X.XXX = ±.03 X.XXX = ±.010 DRAFT --- WALL --- RADII --- CONCENTRICITIES .020 DIA. SQUARENESS .015 IN./IN. BREAK EDGES .015 MAX. SURFACE FINISH PER ASME Y14.36M-1996		APPROVED <i>[Signature]</i> DATE 3-4-11	Raypak OXNARD, CALIFORNIA
CHECKED D BALDWIN	DATE 1-30-09	E.O. SPR	SCALE NONE
DRAWN R NASH	DATE 1-28-09	THIS DRAWING SUBMITTED UNDER CONFIDENTIAL RELATIONSHIP, AS IT EMBODIES PROPRIETARY INFORMATION, WITH ALL RIGHTS RESERVED BY RAYPAK, INC.	
TITLE PIPING, HYDRONIC: 4 BOILERS, XTERM		SERIES/MODEL H7 1005-2005	DWG. NO. 8664
MATERIAL		REV 2	