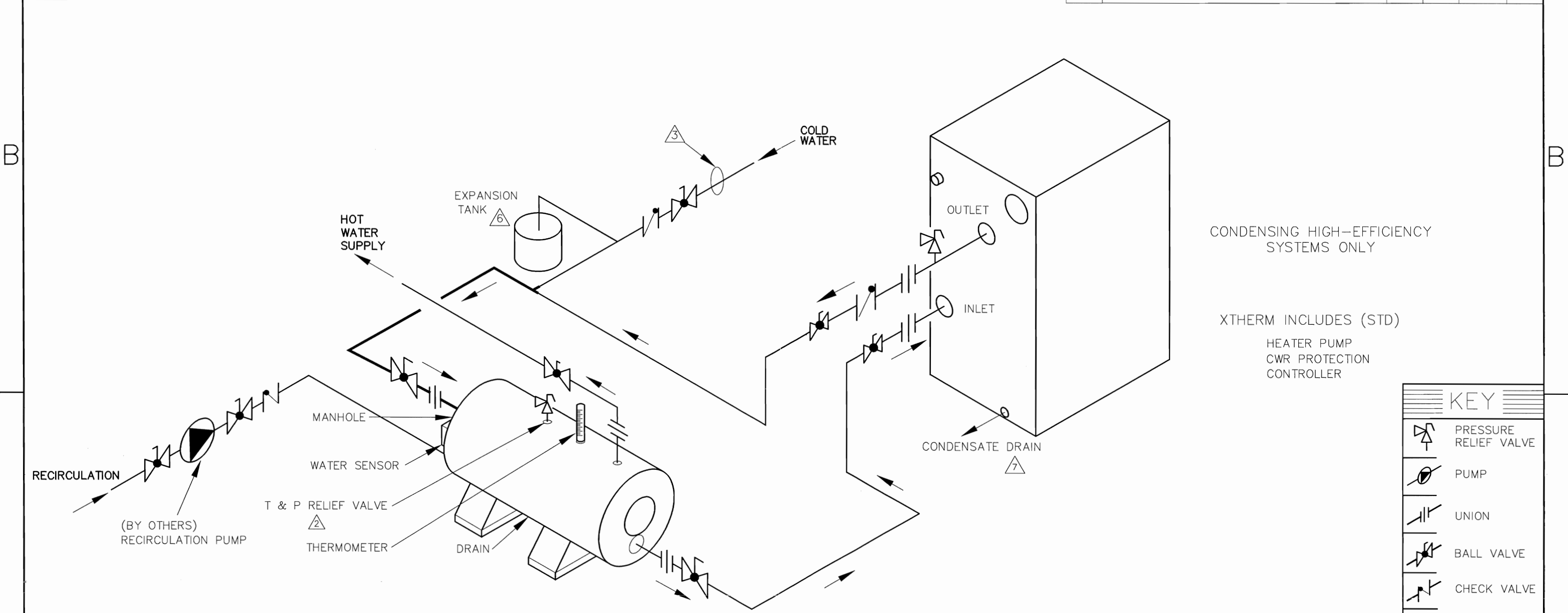


PIPE SIZES	
	HEATER
1005-2005	2-1/2"

THIS PIPING DIAGRAM IS RAYPAK'S RECOMMENDATION AND IS NOT INTENDED TO REPLACE AN ENGINEERED PIPING SYSTEM DESIGNED BY A PROFESSIONAL ENGINEER.

REVISIONS				
REV	DESCRIPTION	E.O.	BY	DATE
1	RELOCATED COLD WATER INLET. REVISED NOTE 3, TANK PIPING. ADDED NOTE 8.		KA	3-19-14



KEY	
	PRESSURE RELIEF VALVE
	PUMP
	UNION
	BALL VALVE
	CHECK VALVE
	THERMOMETER

- NOTES:
1. PLUMB SWING CHECK VALVE IN GRAVITY-CLOSED POSITION.
 2. PIPE ALL RELIEF VALVES TO DRAIN, OR AS LOCAL CODES REQUIRE.
 3. INSTALL COLD WATER BETWEEN HEATER OUTLET AND TANK.
 4. SEE CHART "PIPE SIZES" FOR PIPE SIZES, CALCULATED AT MAXIMUM FLOW, NOT TO EXCEED 7.5 FT/SEC.
 5. PIPE SIZING BASED ON MAX EQUIVALENT LENGTH OF 80 FEET OF PIPE BETWEEN TANK AND HEATER. IF LONGER, CONSULT FACTORY FOR PROPER PIPE SIZE REQUIRED.
 6. PROVIDE FOR THERMAL EXPANSION OF HOT WATER IF A BACKFLOW PREVENTER, CHECK VALVE, WATER METER OR PRESSURE-REDUCING VALVE IS INSTALLED IN THE COLD WATER LINE.
 7. CONDENSATE MUST BE PIPED TO AN APPROVED DRAIN. LOCAL CODE MAY REQUIRE NEUTRALIZATION PRIOR TO DRAIN.
 8. IF HOT WATER SETPOINT EXCEEDS 150°F WITH MAX FLOW, SPECIFY "H" BOILERS INSTEAD OF "WH" WATER HEATERS.
- ACAD: 8752.DWG
HEATER SHOWN REPRESENTS VARIOUS MODELS. BECAUSE INDIVIDUAL MODELS WILL VARY IN DESIGN AND SIZING, SEE EACH SPECIFIC HEATER TYPE FOR DETAILS.

GUARANTEED 60% DRAW WITHOUT TEMPERATURE DROP, USE RAYPAK HEATER, TANK, SIZING TABLE AND HOOK-UP DATA

8752	UNLESS OTHERWISE SPECIFIED: ALL UNITS ARE IN INCHES FRACTIONS ±1/32 ANGLES ±1° X. = ±.12 X.X = ±.06 X.XX = ±.03 X.XXX = ±.010 DRAFT ___ WALL ___ RADII ___ CONCENTRICITIES .020 DIA. SQUARENESS .015 IN./IN. BREAK EDGES .015 MAX. SURFACE FINISH PER ASME Y14.36M-1996	APPROVED 	DATE 4/1/14		OXNARD, CALIFORNIA
	CHECKED D BALDWIN	DATE 4-19-12	E.O. SPR		SCALE NONE
	DRAWN K ANDREW		DATE 8-16-11	RAYPAK PROPRIETARY AND CONFIDENTIAL INFORMATION This drawing contains Confidential and Proprietary Information of Raypak, Inc. All rights reserved by Raypak, Inc.	
TITLE PIPING, UNI-TEMP 60: 1 XTHERM, 1 H TANK					
1	MAT'L.	SERIES/MODEL WH	SIZE B	DWG. NO. 8752	REV 1