



# SUBMITTAL COVER SHEET

PROJECT NAME \_\_\_\_\_  
 LOCATION \_\_\_\_\_  
 ARCHITECT \_\_\_\_\_  
 ENGINEER \_\_\_\_\_  
 CONTRACTOR \_\_\_\_\_  
 SUBMITTED BY \_\_\_\_\_ DATE \_\_\_\_\_

## UNIT SUMMARY

|                     |  |  |  |  |  |  |
|---------------------|--|--|--|--|--|--|
| Quantity            |  |  |  |  |  |  |
| Unit Designation    |  |  |  |  |  |  |
| Model No.           |  |  |  |  |  |  |
| Total Cooling       |  |  |  |  |  |  |
| Sensible Cooling    |  |  |  |  |  |  |
| Air Ent. Evaporator |  |  |  |  |  |  |
| Air Lvg. Evaporator |  |  |  |  |  |  |
| Heating Input       |  |  |  |  |  |  |
| Heating Output      |  |  |  |  |  |  |
| CFM/ESP             |  |  |  |  |  |  |
| EER/SEER            |  |  |  |  |  |  |
| Electrical          |  |  |  |  |  |  |
| Minimum Ampacity    |  |  |  |  |  |  |
| Min.-Max. Breaker   |  |  |  |  |  |  |
| Net Unit Weight     |  |  |  |  |  |  |
| Accessory           |  |  |  |  |  |  |
| Catalog Form Number |  |  |  |  |  |  |

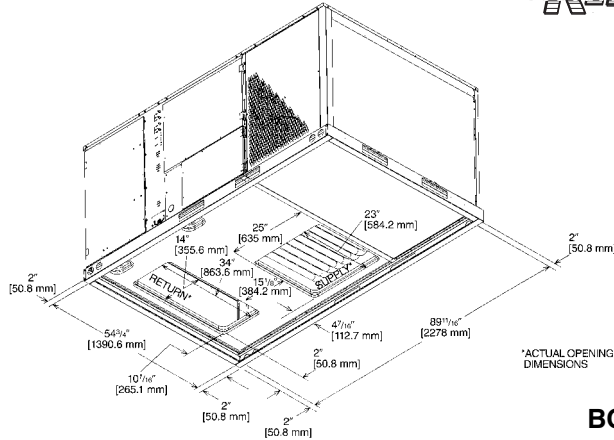
**ACCESSORIES:**

**NOTES:**

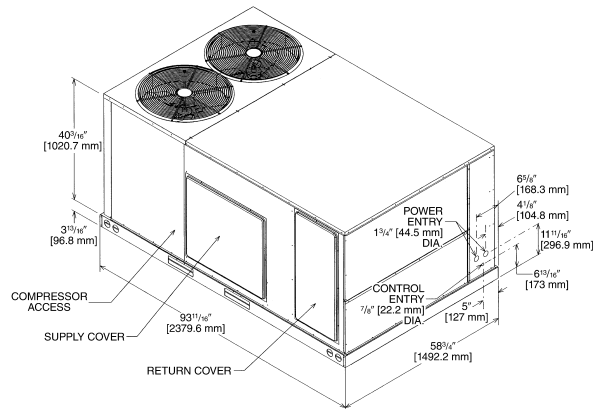
# SUBMITTAL SHEET FOR PACKAGE AIR CONDITIONER UNITS: RLNL-C WITH CAPACITIES FROM 6-12.5 TONS [21.1-44.0 kW]

**R-410A**

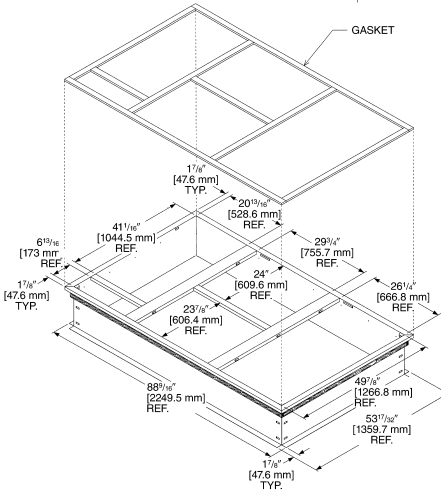
JOB NAME \_\_\_\_\_  
 CONTRACTOR \_\_\_\_\_  
 ENGINEER \_\_\_\_\_  
 LOCATION \_\_\_\_\_  
 ORDER NO. \_\_\_\_\_  
 SUBMITTED FOR  APPROVAL  RECORD  
 SUBMITTED BY \_\_\_\_\_  
 DATE \_\_\_\_\_  
 UNIT DESIGNATION \_\_\_\_\_  
 MODEL NO. \_\_\_\_\_



**BOTTOM VIEW**



**ROOFCURB INSTALLATION**



**Roofcub Includes Insulation Panels**

[ ] Designates Metric Conversions

**UNIT DATA**

**COOLING PERFORMANCE**

TOTAL CAPACITY\* ..... MBH  
 SENSIBLE CAPACITY\* ..... MBH  
 EFFICIENCY (at ARI) ..... EER  
 PART LOAD EFFICIENCY ..... IPLV  
 AMBIENT DB TEMP ..... °F  
 ENTERING DB TEMP ..... °F  
 ENTERING WB TEMP ..... °F  
 LEAVING DB TEMP ..... °F  
 LEAVING WB TEMP ..... °F  
 TOTAL POWER INPUT ..... kW  
 ELEVATION ..... FT  
 SOUND POWER ..... DBELS

**HEATING PERFORMANCE**

ELECTRIC HEAT CAPACITY ..... kW

**SUPPLY AIR BLOWER PERFORMANCE**

SUPPLY AIR ..... CFM [L/s]  
 OUTSIDE AIR ..... CFM [L/s]  
 EXTERNAL STATIC PRESSURE ..... IWG  
 DUCT CONNECTION LOCATION .....  
 BLOWER SPEED ..... RPM  
 MOTOR RATING ..... HP [W]  
 BRAKE HORSEPOWER ..... BHP  
 POWER INPUT REQUIREMENT ..... kW

**ELECTRICAL DATA**

POWER SUPPLY ..... Hz  
 MINIMUM CIRCUIT AMPACITY ..... AMPS  
 MAXIMUM OVERCURRENT DEVICE FUSE SIZE ..... AMPS  
 HACR CIRCUIT BREAKER ..... AMPS

**DIMENSIONS & WEIGHT**

HEIGHT \_\_\_\_\_ IN WIDTH \_\_\_\_\_ IN DEPTH \_\_\_\_\_ IN  
 TOTAL WEIGHT ..... LBS [kg]  
 (including factory options)

**CLEARANCES**

FRONT 48" [1219 mm] BACK 18" [457 mm]  
 BOTTOM 0" TOP 60" [1524 mm]  
 LEFT SIDE 18" [457 mm] 36" [914 mm]  
 RIGHT SIDE (condenser end) 18" [457 mm]



*"Proper sizing and installation of equipment is critical to achieve optimal performance. Ask your Contractor for details or visit [www.energystar.gov](http://www.energystar.gov)."*

## FEATURES FOR PACKAGE AIR CONDITIONERS RLNL-C 6 THRU 12.5 NOMINAL TONS [21.1 THRU 44.0 kW]

### Cooling

- R410A Refrigerant
- Quiet, Efficient, Scroll Compressors
- Two-Stage Cooling for Superior Comfort Control at Minimum Operating Cost on most models
- Belt-drive Blower with optional drive to accommodate design conditions as high as 2.0 inches [.37 kPa] of external static pressure at nominal airflow
- Copper Tube/Aluminum Fin Coils

### Service Features

- 1/4 turn Fasteners and Hinged Access Panels for Convenience
- Large Control Panel with numbered and color coded wiring for Easy Troubleshooting
- Front Access, Slide-Out Blower Assembly for Easy Maintenance
- Convertible Airflow for Maximum Flexibility
- Solid-state microprocessor-based control board provides flexible control and extensive diagnostics for all unit functions
- Features a 16 x 2 character LCD display and a five-button keypad for local configuration and direct diagnosis of the system
- Slide out Condensate Drain pan to simplify Cleaning
- Factory-Installed two-inch [50.8 mm], throw away filters. Accessible without tools
- Plug-in Electrical Connections on outdoor fan assemblies
- Unit is prewired to accept Slip-In Economizer
- Externally-mounted refrigerant gauge ports

- Side or Base utility access minimizing roof penetrations
- Full perimeter, forkable, riggable baserails with protective forkboards for easy handling
- Complete Factory Tested, Charged, Wired
- Compatible with a third party building management system that supports the BACnet Application Specific Controller device profile
- Compatible with a third party building management system that supports the LonMark Space Comfort Controller (SCC) functional profile or LonMark Discharge Air Controller (DAC) functional profile

### Reliability Features

- One-piece Top and Base pan on indoor section, One-inch [25.4 mm] raised flanges on supply/return opening for superior water management
- Base pan Insulation mounted on bottom helps eliminate corrosion and improves indoor air quality
- Non-Corrosive, sloped drain pan helps improve indoor air quality
- Insulation secured by adhesive *and* mechanical means
- Electrodeposition power-coat paint process guards against extreme weather conditions and withstands 1000-hour salt-spray test
- High and Low Refrigerant Pressure Switches
- Solid core refrigerant liquid line filters
- Available Comfort Alert® Module for power phase monitoring protection

## ACCESSORIES

### Factory Installed

- Oversized Blower motor .....
- Outdoor Coil Guard .....
- Non-Powered Convenience Outlet .....
- Low Ambient w/Comfort Alert® Control .....
- Single Enthalpy Economizer  
w/Barometric Relief and DDC .....
- Single Enthalpy Economizer w/Barometric  
Relief, Smoke Detector and DDC .....

[ ] Designates Metric Conversions

### Field Installed

- Electric Heater Kits .....
- Outdoor Coil Guard .....
- Non-Powered Convenience Outlet .....
- Low Ambient Control .....
- Comfort Alert® Control .....
- 14" Full Perimeter Roofcurb .....
- 24" Full Perimeter Roofcurb .....
- Roofcurb Adapter .....
- Concentric Diffuser .....
- Manual Outside Air Intake Damper .....
- Motorized Outside Air Intake .....
- Motorized Outside Air Intake Damper  
w/DDC Feedback .....
- Single Enthalpy Economizer  
w/Barometric Relief and DDC .....
- Single Enthalpy Economizer w/Barometric  
Relief, Smoke Detector and DDC .....
- Horizontal Single Enthalpy Economizer  
w/Barometric Relief and DDC .....
- Dual Enthalpy Adapter .....
- Power Exhaust .....
- CO<sub>2</sub> Sensor (wall mount with LCD) .....

**Before proceeding with installation, refer to installation instructions packaged with each model, as well as complying with all Federal, State, Provincial, and Local codes, regulations, and practices.**

Rheem Sales Company, Inc.  
P.O. Box 17010, Fort Smith, AR 72917

*"In keeping with its policy of continuous progress and product improvement, Rheem reserves the right to make changes without notice."*