



SUBMITTAL COVER SHEET

PROJECT NAME _____

LOCATION _____

ARCHITECT _____

ENGINEER _____

CONTRACTOR _____

SUBMITTED BY _____ DATE _____

UNIT SUMMARY

| | | | | | | |
|---------------------|--|--|--|--|--|--|
| Quantity | | | | | | |
| Unit Designation | | | | | | |
| Model No. | | | | | | |
| Total Cooling | | | | | | |
| Sensible Cooling | | | | | | |
| Air Ent. Evaporator | | | | | | |
| Air Lvg. Evaporator | | | | | | |
| Heating Input | | | | | | |
| Heating Output | | | | | | |
| CFM/ESP | | | | | | |
| EER/SEER | | | | | | |
| Electrical | | | | | | |
| Minimum Ampacity | | | | | | |
| Min.-Max. Breaker | | | | | | |
| Net Unit Weight | | | | | | |
| Accessory | | | | | | |
| Catalog Form Number | | | | | | |

ACCESSORIES:

NOTES:

SUBMITTAL SHEET FOR (-)GFD- 90% PLUS A.F.U.E. UPFLOW GAS FURNACES

Models with Input Rates from 60,000 to 120,000 BTU/HR
[17.58 to 35.17 kW]

JOB NAME _____ MODEL NO. _____
 CONTRACTOR _____ OUTDOOR UNIT MODEL NO. _____
 ENGINEER _____ LOCATION _____
 SUBMITTED FOR APPROVAL RECORD ORDER NO. _____
 DATE _____

UNIT DATA

HEATING PERFORMANCE

TOTAL CAPACITY INPUT* MBH [kW]
 TOTAL CAPACITY OUTPUT* .. MBH [kW]
 DESIGN TEMP. RISE °F [°C] DB
 AFUE %
 CALIFORNIA SEASONAL EFFICIENCY %
 (*uses blower motor heat)

SUPPLY AIR BLOWER PERFORMANCE

TOTAL AIR SUPPLY CFM [L/s]
 TOTAL RESISTANCE EXTERNAL TO UNIT IWG
 BLOWER SPEED RPM
 POWER OUTPUT REQUIREMENT .. BHP
 MOTOR RATING HP [W]
 POWER INPUT REQUIREMENT kW

ELECTRICAL DATA

POWER SUPPLY / /
 TOTAL UNIT AMPACITY AMPS
 MINIMUM WIRE SIZE AWG
 MAXIMUM OVERCURRENT DEVICE FUSES/HACR BREAKER AMPS

FEATURES FOR (-)GFD-

- Heat exchanger is constructed of all stainless steel for maximum corrosion resistance and thermal fatigue reliability.
- Modulation rate between 40% and 100% of total capacity.
- Reduced firing rates, electrically efficient ECM motor, and solid doors provide the ultimate in quiet operation.
- Minimum 94% A.F.U.E.
- Low speed constant fan.
- Constant temperature rise for superior comfort.
- Seven segment LED for system diagnostics.
- Diagnostic history for troubleshooting.
- Two-speed induced draft motor.
- Direct spark ignition with remote sense.
- Left or right side gas and electric inlet connections and condensate drainage allow quick and simple change.
- Optional indoor or outdoor combustion air.

FIELD INSTALLED ACCESSORIES

- Vent Termination Kits Concentric:
 Vertical/Horizontal = RXGY-G02, RXGY-D02, RXGY-E03..
 Condensate Pump Kit: RXGY-B01.....
 Neutralizer Kit: RXGY-A01
 Return Air Plenum (RXGR-C17B, 21B, 24B)
 High Altitude Kit (RXGY-F12, 08, 09, 10, 11)
 External Bottom Filter Rack: RXGF-CB
 Modulating Furnace Thermostat: (-)HC-TST401MDMS
 External Side Filter Rack: RXGF-CA

FILTER RACK FILTER SIZES* INCHES [mm]

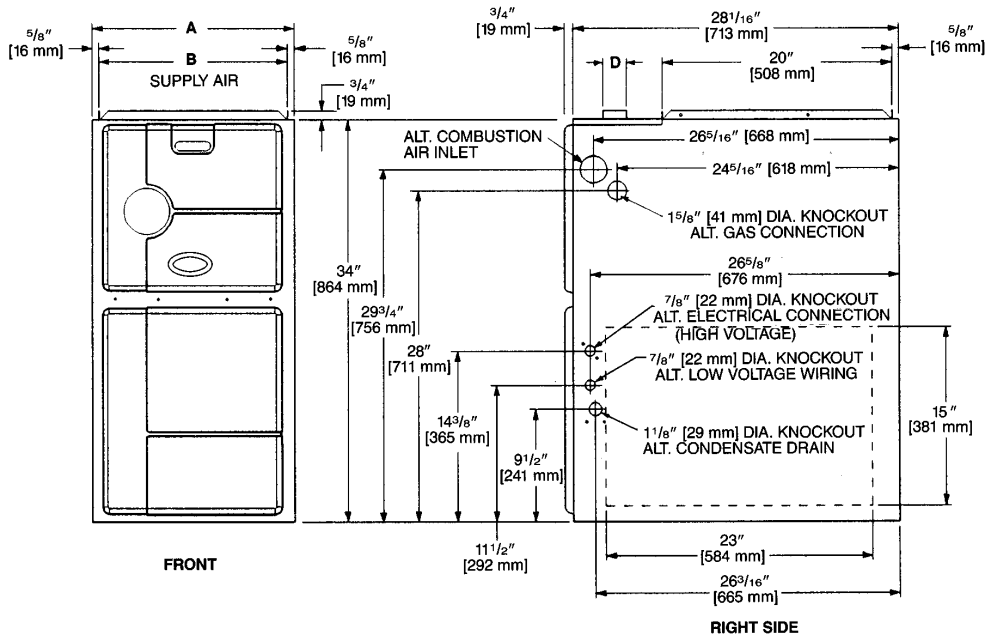
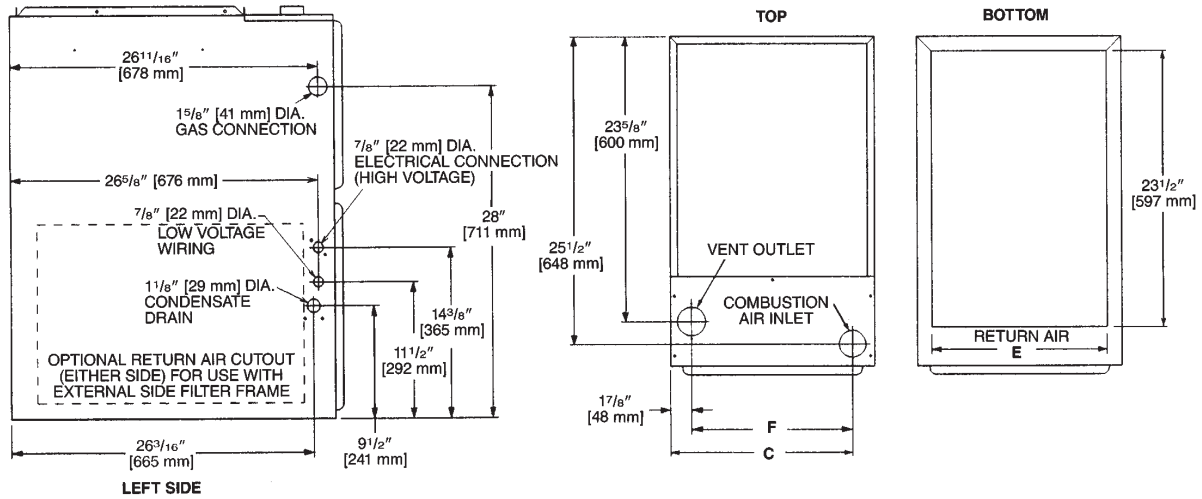
| MODEL (-)GFD- | RXGF-CB (BOTTOM) | RXGF-CA (SIDE) |
|---------------|--|--|
| 06 | 15 ³ / ₄ x 25 [400 x 635] | 15 ³ / ₄ x 25 [400 x 635] |
| 07 | 15 ³ / ₄ x 25 [400 x 635] | 15 ³ / ₄ x 25 [400 x 635] |
| 09 | 19 ¹ / ₄ x 25 [489 x 635] | 15 ³ / ₄ x 25 [400 x 635] |
| 10 | 19 ¹ / ₄ x 25 [489 x 635] | 15 ³ / ₄ x 25 [400 x 635] |
| 12 | 22 ³ / ₄ x 25 [578 x 635] | 15 ³ / ₄ x 25 [400 x 635] |

*Filter racks are shipped without filters.
 Filters shipped with furnace may be used or a suitable 1" [25.4 mm] filter.

[] Designates Metric Conversions



UPFLOW MODELS



| MODEL (-)/GFD- | A | B | C | D | E | F | LEFT SIDE | MINIMUM CLEARANCE (IN.) [mm] | | | | |
|-------------------|--------------|--------------|--------------|--------|--------------|----------------|--------------|------------------------------|------|--------|--------|------|
| | | | | | | | | RIGHT SIDE | BACK | TOP | FRONT | VENT |
| 06 | 17 1/2 [445] | 16 3/8 [416] | 15 5/8 [397] | 2 [51] | 15 [422] | 13 13/16 [351] | 0 | 0 | 0 | 1 [25] | 2 [51] | 0 |
| 07 | 17 1/2 [445] | 16 3/8 [416] | 15 5/8 [397] | 2 [51] | 15 [422] | 13 13/16 [351] | 0 | 0 | 0 | 1 [25] | 2 [51] | 0 |
| 09 | 21 [533] | 19 7/8 [505] | 19 1/8 [487] | 2 [51] | 18 1/2 [511] | 17 5/16 [440] | 0 | 0 | 0 | 1 [25] | 2 [51] | 0 |
| 10 | 21 [533] | 19 7/8 [505] | 19 1/8 [487] | 2 [51] | 18 1/2 [511] | 17 5/16 [440] | 0 | 0 | 0 | 1 [25] | 2 [51] | 0 |
| 12 | 24 1/2 [622] | 23 3/8 [594] | 22 5/8 [575] | 2 [51] | 22 [600] | 20 13/16 [529] | 0 | 0 | 0 | 1 [25] | 2 [51] | 0 |

[] Designates Metric Conversions

Before proceeding with installation, refer to installation instructions packaged with each model, as well as complying with all Federal, State, Provincial, and Local codes, regulations, and practices.

RHEEM
MANUFACTURING
COMPANY
5600 Old Greenwood Road, Fort Smith, Arkansas 72908

"In keeping with its policy of continuous progress and product improvement, Rheem reserves the right to make changes without notice."