



SUBMITTAL COVER SHEET

PROJECT NAME _____

LOCATION _____

ARCHITECT _____

ENGINEER _____

CONTRACTOR _____

SUBMITTED BY _____ DATE _____

UNIT SUMMARY

| | | | | | | |
|---------------------|--|--|--|--|--|--|
| Quantity | | | | | | |
| Unit Designation | | | | | | |
| Model No. | | | | | | |
| Total Cooling | | | | | | |
| Sensible Cooling | | | | | | |
| Air Ent. Evaporator | | | | | | |
| Air Lvg. Evaporator | | | | | | |
| Heating Input | | | | | | |
| Heating Output | | | | | | |
| CFM/ESP | | | | | | |
| EER/SEER | | | | | | |
| Electrical | | | | | | |
| Minimum Ampacity | | | | | | |
| Min.-Max. Breaker | | | | | | |
| Net Unit Weight | | | | | | |
| Accessory | | | | | | |
| Catalog Form Number | | | | | | |

ACCESSORIES:

NOTES:

SUBMITTAL SHEET FOR RGRC- 95% A.F.U.E. UPFLOW GAS FURNACES

Models with Input Rates from 45,000 to 105,000 BTU/HR
[13.19 to 30.77 kW]



JOB NAME _____ MODEL NO. _____
 CONTRACTOR _____ OUTDOOR UNIT MODEL NO. _____
 ENGINEER _____ LOCATION _____
 SUBMITTED FOR APPROVAL RECORD ORDER NO. _____
 DATE _____

UNIT DATA

HEATING PERFORMANCE

TOTAL CAPACITY INPUT* MBH [kW]
 TOTAL CAPACITY OUTPUT* .. MBH [kW]
 DESIGN TEMP. RISE °F [°C] DB
 AFUE %
 CALIFORNIA SEASONAL EFFICIENCY %
 (*uses blower motor heat)

SUPPLY AIR BLOWER PERFORMANCE

TOTAL AIR SUPPLY CFM [L/s]
 TOTAL RESISTANCE EXTERNAL TO UNIT IWG
 BLOWER SPEED RPM
 POWER OUTPUT REQUIREMENT .. BHP
 MOTOR RATING HP [W]
 POWER INPUT REQUIREMENT kW

ELECTRICAL DATA

POWER SUPPLY Hz
 TOTAL UNIT AMPACITY AMPS
 MINIMUM WIRE SIZE AWG
 MAXIMUM OVERCURRENT DEVICE FUSES/HACR BREAKER AMPS

FEATURES FOR RGRC

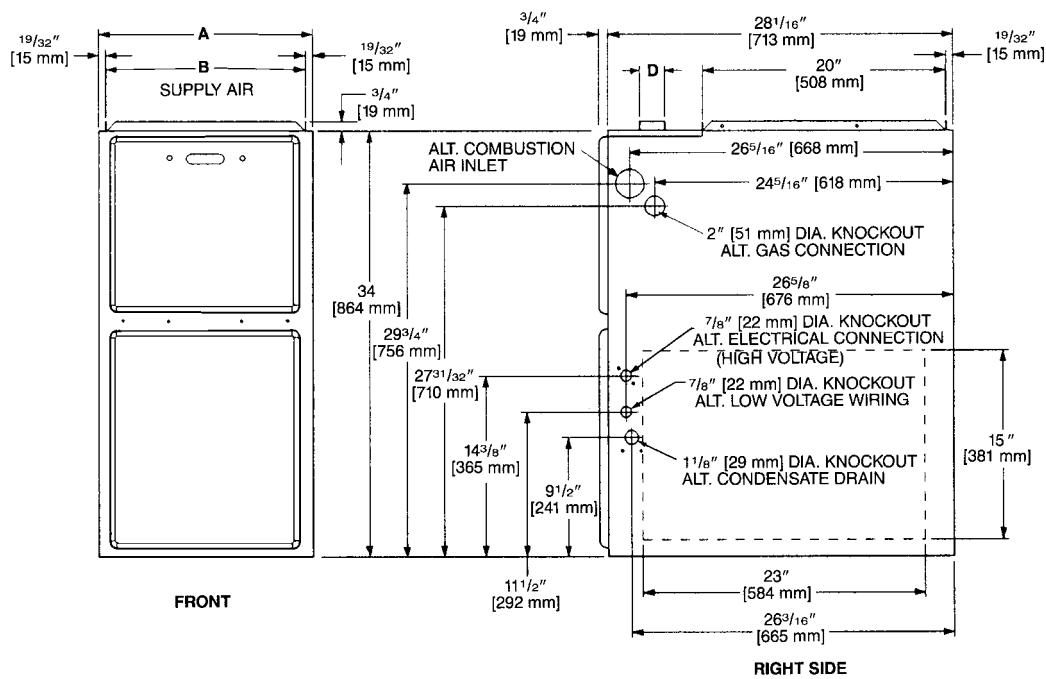
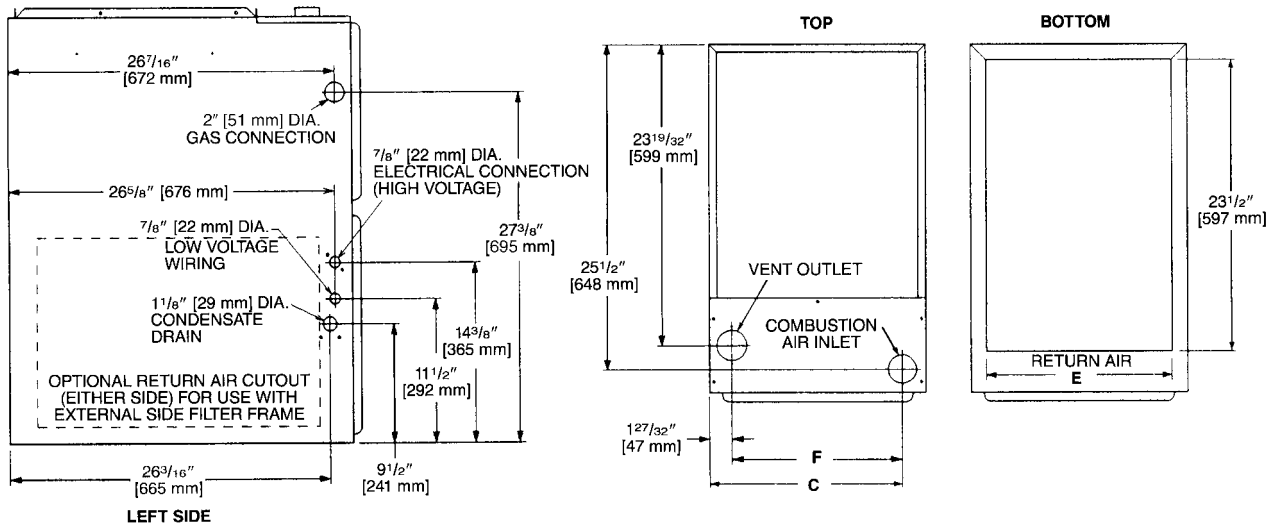
- Heat exchanger is constructed of aluminized steel for maximum corrosion resistance and thermal fatigue reliability.
- Low profile "34 inch" design is lighter and easier to handle and leaves room for optional accessories.
- Left or right side gas, electric, and condensate drainage connections on upflow models.
- Integrated control board manages all operational functions and provides hookups for humidifier and electronic air cleaner.
- An insulated blower compartment, a slow-opening gas valve and a specially designed inducer system make it one of the quietest furnaces on the market today.
- Pre-paint galvanized steel cabinet.
- Molded permanent filters.
- Optional indoor or outdoor combustion air. In addition, combustion air may be piped to either the top or side of the cabinet on all upflow models. A special molded fitting is provided to ease installation.
- Control fuse protection.
- Solid bottom is standard.
- Control board diagnostics.

FIELD INSTALLED ACCESSORIES

- Plenum Adapter (RXAA-).....
- Vent Termination Kits Concentric:
 Vertical/Horizontal = RXGY-E03A
 Horizontal Two Pipe (US): RXGY-D02, D03 and D04
 Horizontal Two Pipe (Canadian Installations)
 RXGY-D02A, RXGY-D03A, RXGY-D04A.....
 Neutralizer Kit: RXGY-A01
 Fossil Fuel Kit: RXPF-F01 and F02.....
 External Bottom Filter Rack RXGF-CB
 External Side Filter Rack RXGF-CA



UPFLOW MODELS



| MODEL RGRC- | A | B | C | D | E | F | LEFT SIDE | MINIMUM CLEARANCE (IN.) [mm] | | | | | SHIP WGTS. [kg] |
|----------------|--------------------------------------|--|--------------------------------------|--------|--------------------------------------|--|--------------|------------------------------|------|--------|--------|------|-----------------------|
| | | | | | | | | RIGHT SIDE | BACK | TOP | FRONT | VENT | |
| 04EM | 17 ¹ / ₂ [445] | 16 ¹ / ₃₂ [415] | 15 ⁵ / ₈ [397] | 2 [51] | 15 [422] | 13 ²⁵ / ₃₂ [352] | 0 | 0 | 0 | 1 [25] | 2 [51] | 0 | 111 [50] |
| 06EM | 17 ¹ / ₂ [445] | 16 ¹ / ₃₂ [415] | 15 ⁵ / ₈ [397] | 2 [51] | 15 [422] | 13 ²⁵ / ₃₂ [352] | 0 | 0 | 0 | 1 [25] | 2 [51] | 0 | 117 [53] |
| 07EM | 17 ¹ / ₂ [445] | 16 ¹ / ₃₂ [415] | 15 ⁵ / ₈ [397] | 2 [51] | 15 [422] | 13 ²⁵ / ₃₂ [352] | 0 | 0 | 0 | 1 [25] | 2 [51] | 0 | 124 [56] |
| 07ER | 21 [533] | 19 ²⁷ / ₃₂ [504] | 19 ¹ / ₈ [487] | 2 [51] | 18 ¹ / ₂ [511] | 17 ⁹ / ₃₂ [441] | 0 | 0 | 0 | 1 [25] | 2 [51] | 0 | 137 [62] |
| 09EZ | 21 [533] | 19 ²⁷ / ₃₂ [504] | 19 ¹ / ₈ [487] | 2 [51] | 18 ¹ / ₂ [511] | 17 ⁹ / ₃₂ [441] | 0 | 0 | 0 | 1 [25] | 2 [51] | 0 | 148 [67] |
| 10EZ | 21 [533] | 19 ²⁷ / ₃₂ [504] | 19 ¹ / ₈ [487] | 2 [51] | 18 ¹ / ₂ [511] | 17 ⁹ / ₃₂ [441] | 0 | 0 | 0 | 1 [25] | 2 [51] | 0 | 152 [69] |

[] Designates Metric Conversions

IMPORTANT NOTE: Horizontal furnace may be installed for horizontal left hand air supply ONLY. The condensate trap provided for horizontal application must be installed in the field beneath the unit as directed in the furnace Installation & Operating Instructions.

Before proceeding with installation, refer to installation instructions packaged with each model, as well as complying with all Federal, State, Provincial, and Local codes, regulations, and practices.

"In keeping with its policy of continuous progress and product improvement, Manufacturer reserves the right to make changes without notice."