



Pacemaker® gas water heaters feature the Guardian System – engineered to exceed ANSI standards for flammable vapor ignition resistance

Efficiency

- .58 - .62 EF
- More hot water at a low operating cost

Performance

- FHR: 50 to 90 gallons for natural gas
- Recovery: 30.3 to 50.5 gallons at a 90 degree rise, based on model

Guardian System™ & Sensor

- Exclusive air/fuel shut-off device
- Maintenance free – no filter to clean

Low Emissions

- Eco-friendly burner, low NOx design
- Meets 40 ng/J NOx requirements

Longer Life

- Patented magnesium anode rod with resistor protects the tank from rust

High Altitude Compliant

- All models certified up to 6,000 ft. above sea level
- Some models certified up to 10,200 ft. above sea level, check factory for listings

Plus...

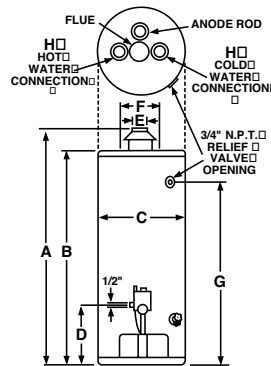
- Easy to light – no matches required
- EverKleen™ patented system fights sediment build-up
- Brass drain valve and temperature and pressure relief valve are included
- Standard replacement parts

Warranty

- 6-Year limited tank and parts warranty*
- With ProtectionPlus™ the 6-year limited tank warranty becomes 10-year

*See Residential Warranty Certificate for complete information

Units meet or exceed ANSI requirements and have been tested according to D.O.E. procedures. Units meet or exceed the energy efficiency requirements of NAECA, ASHRAE standard 90, ICC Code and all state energy efficiency performance criteria.



Pacemaker
29, 30, 38, 40 and 50-Gallon Capacities
Up to 50,000 Btu/h
Natural and LP Gas



*LEED Point = 1

TYPE	DESCRIPTION		FEATURES					ROUGHING IN DIMENSIONS (SHOWN IN INCHES)										ENERGY INFO.	
	GAL. CAP.	MODEL NUMBER	GAS INPUT IN THOUS. BTU/H		RECOVERY IN G.P.H. 90° RISE		FIRST HOUR DEL. G.P.H.	HT. TO VENT A	TANK HT. B	DIAM. C	HT. TO GAS CONN. D	VENT SIZE E	WATER CONN. CNTR. F	HT. TO SIDE T&P G	WATER CONN. H	SHIP. WT. (LBS)	ENERGY FACTOR NAT.	AVG. ANN. OPER. COST NAT.	
			NAT.	LP	NAT.	LP	NAT.												
TALL	29	P2-30F	32	30	32.3	30.3	50	59-3/4	56-3/8	16-1/8	14-1/2	3	8	50-3/4	3/4	100	0.62	\$294	
	40	P40-36F1	36	-	36.4	-	67	61-1/2	58	17-3/4	14-1/2	3 or 4	8	53	3/4	120	0.59	\$309	
	40	P2-40F1	38	32	38.4	32.3	73	61-3/4	58-3/8	18-1/8	14-1/2	3 or 4	8	52-1/4	3/4	120	0.59	\$309	
	38	PH2-40F	40	34	40.4	34.3	68	61-1/2	57-3/4	19-3/4	14-1/2	3 or 4	8	52-1/4	3/4	125	0.60	\$304	
	40	PH2R40-40F*	40	34	40.4	34.3	68	63-1/4	59-3/4	21	14-1/2	3 or 4	8	53-1/2	3/4	135	0.62	\$294	
	50	PH2R50-40F*	40	36	40.4	36.4	83	62-1/4	58-3/4	23	14-1/2	3 or 4	8	52-1/2	3/4	165	0.62	\$294	
	50	P2-50F1	38	36	38.4	36.4	90	61-1/2	58-1/4	20-1/8	14-1/2	3 or 4	8	51-3/8	3/4	130	0.58	\$315	
	50	PH2-50-40F	40	36	40.4	36.4	82	61-1/2	58	21-3/4	14-1/2	3 or 4	8	52-1/2	3/4	150	0.58	\$315	
	50	PH2-50-50F	50	-	50.5	-	81	62	58	21-3/4	14-1/2	3 or 4	8	52-1/2	3/4	150	0.58	\$315	
SHORT	30	P2-30S-30F	30	-	30.3	-	50	49-3/4	46-1/4	19-3/4	14-1/2	3	8	40-1/4	3/4	98	0.61	\$299	
	40	P2R-40SF*	40	36	40.4	36.4	72	53-7/8	50-1/2	23	14-1/2	3	8	44	3/4	135	0.62	\$294	
	40	P2-40SF	36	34	36.4	34.3	72	52-3/4	49-3/8	20-1/8	14-1/2	3	8	42-3/4	3/4	130	0.59	\$309	
	40	PH2-40SF	40	36	40.4	36.4	72	53-7/8	50-1/2	20-1/8	14-1/2	3 or 4	8	44	3/4	130	0.59	\$309	
	50	PH50SF	40	36	40.4	36.4	84	54-1/4	49-3/4	22-1/4	14-1/2	3	8	44	3/4	158	0.59	\$309	

Specify LP gas when ordering. Add "P" suffix to the model number. Example: PH2R40-40PF.

Energy Factor and Average Annual Operating Costs based on D.O.E. (Department of Energy) test procedures. D.O.E. national average fuel rate natural gas \$1.218/therm; LP \$1.87/gallon.

In keeping with its policy of continuous progress and product improvement, Ruud reserves the right to make changes without notice.