



CUSTOMIZE YOUR TANKLESS INSTALLATION



EXTRAS GUIDE
TANKLESS GAS
WATER HEATERS



ACCESSORIES,
MANIFOLD SYSTEMS
AND VENTING





TANKLESS ACCESSORIES



COSMETIC PIPE COVERS

These cosmetic pipe covers enhance the installation of the water heater. Provides protection from tampering and weather.

- RTG20227 - Fits RUTGH Series Indoor or Outdoor Condensing Models
- RTG20217DVG - Fits RUTG DV Series Indoor Tankless Models
- RTG20217XG - Fits RUTG X Series Outdoor Tankless Models



REMOTE CONTROLS

- RTG20006DW - UMC-117 main remote control
- RTG20006DU - USC1-117 bath remote control
- RTG20006DV - USC2-117 second bath remote control
- RTG20009-1 - 10 ft. thermostat wire 1 pair 18AWG



OUTDOOR RECESS BOX

These allow you to mount an outdoor tankless into the wall, flush with the outside of the home. They are weather resistant and can be locked for security.

- RTG20226 - Fits RUTGH X Series Outdoor Condensing Models
- RTG20218 - Fits RUTG X Series Outdoor Tankless Models



FLUSH KIT

The Tankless Flush kit connects to the service valves for an easy way to flush and de-scale your tankless water heater.

- RTG20214
Includes pump, hoses and 5 gallon bucket.



SERVICE VALVES

Webstone Brand Tankless Service Valves

- RTG20220AB - Clean Brass for California Low Lead Code
- RTG20220 - Standard Brass
Includes Cold and Hot Water set and Pressure Relief Valve.

See the Tankless Parts and Accessories Catalog for additional options and accessories.

TANKLESS MANIFOLD SYSTEMS

COMMERCIAL AND MULTI-UNIT SYSTEMS

Combine multiple units, up to 20, for the most demanding applications. Upgrade standard units for commercial operation with temperatures up to 185°F and a 5-year commercial warranty.



MIC-6 MANIFOLD CONTROLLER

Connect up to 6 tankless water heaters together in a single manifold. This kit mounts inside a single tankless unit and connects up to 5 additional units for a total of 6 water heaters.

- RTG20213A - MIC-6

Includes (1) 1ft Control Cable, (1) 6ft Control Cable, additional Type Q Cables are needed for 3 to 6 units.

MANIFOLD CONTROL CABLES (TYPE Q)

One required for each tankless water heater installed in a manifold. Connects a single tankless water heater to the MIC-6 Controller.

- RTG20213B - MIC-Q-1 1ft Control Cable
- RTG20213C - MIC-Q-6 6ft Control Cable
- RTG20213D - MIC-Q-18 18ft Control Cable

These cables will not fit the MIC-185 Controller.



MIC-185 MANIFOLD CONTROLLER

Connect up to 6 tankless water heaters together in a single manifold. The system can control up to six water heaters and can be expanded up to 20 water heaters with the MICS-180. A weather proof cabinet for indoor and outdoor applications is included.

- RTG20126A - MIC-185

Includes installation cabinet for indoor or outdoor applications and power cord.

MICS-180 MANIFOLD CONTROLLER EXPANSION CARD

Add on card for the MIC-185 to connect up to 20 units in total.

- RTG20126B

Installations of 7 to 20 require this expansion card. Mounts inside the MIC-185 cabinet, includes hardware to install.

MANIFOLD CONTROL CABLES (TYPE K)

One required for each tankless water heater installed in a manifold. Connects a single tankless water heater to the MIC-185 Controller or MICS-180 expansion card.

- RTG20126C - MIC-K-16 16ft Control Cable
- RTG20126D - MIC-K-32 32ft Control Cable
- RTG20126E - MIC-K-65 65ft Control Cable

These cables will not fit the MIC-6 Controller.



EZ-LINK™ CABLE

Easily connect two tankless units together. When connected the units will operate as a single system. Compatible with all current models.

- RTG20040

Must use two identical models.

See the Tankless Parts and Accessories Catalog for Commercial Upgrade Kits.



TANKLESS VENTING

DIRECT VENT KITS FOR CONDENSING TANKLESS WATER HEATERS RUTGH-95DV AND RUTGH-84DV



HORIZONTAL TERMINATION KIT

11-3/4 inch wide, 8 inch tall, 2-1/2 inch deep.
Fits PVC, ABS piping. Offers a clean installation
of the intake and exhaust pipe of the condensing
tankless water heater.

- SP20286 for 3 inch PVC
- SP20285 for 2 inch PVC



HORIZONTAL OR VERTICAL CONCENTRIC VENT TERMINATION KIT

39 inches long, 4-1/2 inch diameter
pipe, requires 5 inch hole or flashing.
Use for a single pipe penetration
through a wall or roof.

- SP20245 for 3 inch PVC

DIRECT VENT KITS FOR RUTG-64DV, RUTG-84DV AND RUTG-95DV



HORIZONTAL VENT KIT

Low profile cone design for concentric direct
vent systems. Includes 90-degree elbow, short
low profile termination, installation screws.

- RTG20231 - up to 6" thick walls
- RTG20234 - up to 8" thick walls

ECONOMY VENT KIT

- RTG20210 - up to 10" thick walls



VERTICAL VENT TERMINATION KIT BY METAL FAB, INC.

Contains: storm collar, 6/12 to
12/12 pitched cone flashing,
vertical termination with rain
cap. Does not include vertical
vent pipe.

- RTG20211

COMPLETE YOUR INSTALLATION WITH VENTING COMPONENTS AND ACCESSORIES



6" VENT LENGTH

5.66" overall length

- RTG20151W

12" VENT LENGTH

11.66" overall length

- RTG20151R

24" VENT LENGTH

23.66" overall length

- RTG20151C-1

36" VENT LENGTH

35.66" overall length

- RTG20151D-1



90-DEGREE ELBOW

8.1" rise - 8.1" run

- RTG20151A-1



45-DEGREE ELBOW

8.6" rise - 3" run

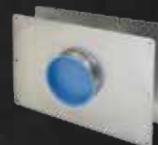
- RTG20151B-1



WALL HANGER

2-point pivot mounting

- RTG20151H



WALL THIMBLE

17" wide for up to 6" deep walls,
with drywall and stucco rings,
ideal for new construction

- RTG20151Z

See the Tankless Parts and Accessories Catalog for more options.

In keeping with its policy of continuous progress and product improvement, Ruud reserves the right to make changes without notice.

Ruud Water Heating • 101 Bell Road
Montgomery, Alabama 36117-4305 • 1.800.621.5622