



# SUBMITTAL COVER SHEET

PROJECT NAME \_\_\_\_\_

LOCATION \_\_\_\_\_

ARCHITECT \_\_\_\_\_

ENGINEER \_\_\_\_\_

CONTRACTOR \_\_\_\_\_

SUBMITTED BY \_\_\_\_\_ DATE \_\_\_\_\_

## UNIT SUMMARY

Quantity						
Unit Designation						
Model No.						
Total Cooling						
Sensible Cooling						
Air Ent. Evaporator						
Air Lvg. Evaporator						
Heating Input						
Heating Output						
CFM/ESP						
EER/SEER						
Electrical						
Minimum Ampacity						
Min.-Max. Breaker						
Net Unit Weight						
Accessory						
Catalog Form Number						

**ACCESSORIES:**

**NOTES:**

# SUBMITTAL SHEET FOR RGRA- AND RGRB- 90% A.F.U.E. OR ABOVE UPFLOW GAS FURNACES

**Models with Input Rates from 45,000 to 120,000 BTU/HR  
[13.19 to 35.17 kW]**

JOB NAME \_\_\_\_\_ MODEL NO. \_\_\_\_\_  
 CONTRACTOR \_\_\_\_\_ OUTDOOR UNIT MODEL NO. \_\_\_\_\_  
 ENGINEER \_\_\_\_\_ LOCATION \_\_\_\_\_  
 SUBMITTED FOR  APPROVAL  RECORD ORDER NO. \_\_\_\_\_  
 DATE \_\_\_\_\_

## UNIT DATA

### HEATING PERFORMANCE

TOTAL CAPACITY INPUT\* ..... MBH [kW]  
 TOTAL CAPACITY OUTPUT\* .. MBH [kW]  
 DESIGN TEMP. RISE ..... °F [°C] DB  
 AFUE ..... %  
 CALIFORNIA SEASONAL  
 EFFICIENCY ..... %  
(\*uses blower motor heat)

### SUPPLY AIR BLOWER PERFORMANCE

TOTAL AIR SUPPLY ..... CFM [L/s]  
 TOTAL RESISTANCE EXTERNAL  
 TO UNIT ..... IWG  
 BLOWER SPEED ..... RPM  
 POWER OUTPUT REQUIREMENT .. BHP  
 MOTOR RATING ..... HP [W]  
 POWER INPUT REQUIREMENT ..... kW

### ELECTRICAL DATA

POWER SUPPLY ..... Hz  
 TOTAL UNIT AMPACITY ..... AMPS  
 MINIMUM WIRE SIZE ..... AWG  
 MAXIMUM OVERCURRENT DEVICE  
 FUSES/HACR BREAKER ..... AMPS

## FEATURES FOR RGRA- AND RGRB-

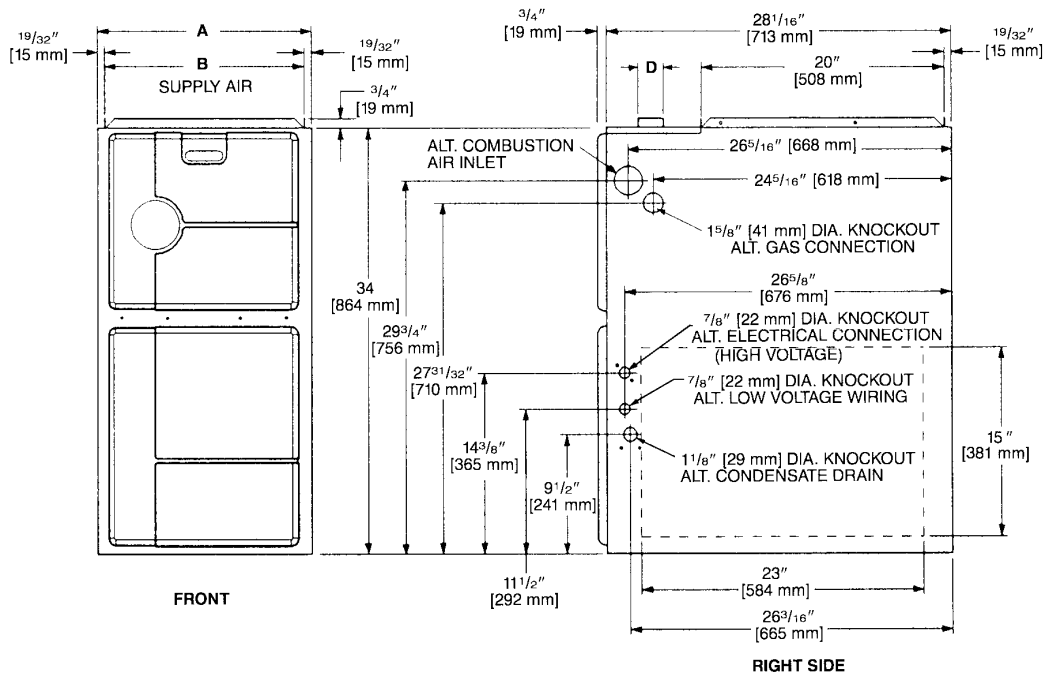
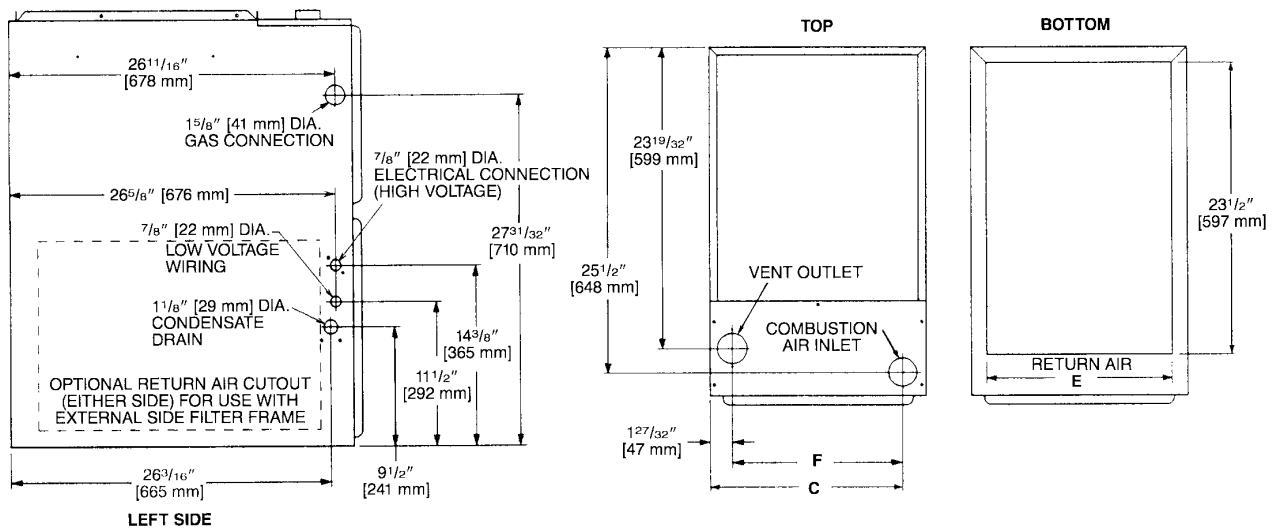
- Low profile “34 inch” design is lighter and easier to handle and leaves room for optional accessories.
- Left or right side gas, electric, and condensate drainage connections on upflow models.
- Integrated control board manages all operational functions and provides hookups for an electronic air cleaner.
- A slow-opening gas valve and a specially designed inducer system make it one of the quietest furnaces on the market today.
- Pre-paint galvanized steel cabinet.
- Optional indoor or outdoor combustion air. In addition, combustion air may be piped to either the top or right side of the cabinet on all upflow models. A special molded fitting is provided to ease installation.
- Control board diagnostics.
- Heat exchanger is constructed of aluminized steel for maximum corrosion resistance and thermal fatigue reliability.
- An insulated blower compartment.
- Molded permanent filters.
- Transformer and control fuse protection.
- Solid bottom is standard.

## FIELD INSTALLED ACCESSORIES

- Plenum Adapter (RXAA-) .....
- Vent Termination Kits Concentric:  
 Vertical/Horizontal: RXGY-E03 .....   
 Horizontal Two Pipe: RXGY-D02/-003/-004 .....
- Condensate Pump Kit: RXGY-B01 .....   
 Neutralizer Kit: RXGY-A01 .....
- Fossil Fuel Kit: RXPF-F01 and F02 .....
- Return Air Plenum (RXGR-C17B, 21B, 24B) .....
- Combustible Floor Base: RXGC-B17, B21 and B24 .....
- External Bottom Filter Rack: RXGF-CB .....
- External Side Filter Rack: RXGF-CA .....
- High Altitude Kit: (RXGY-F04, 05, 06, 07) .....



# UPFLOW MODELS



MODEL RGRA-/ RGRB-	A	B	C	D	E	F	LEFT SIDE	MINIMUM CLEARANCE (IN.) [mm]					SHIP WGTS. [kg]
								RIGHT SIDE	BACK	TOP	FRONT	VENT	
04EM	17 <sup>1/2</sup> [445]	16 <sup>11/32</sup> [415]	15 <sup>5/8</sup> [397]	2 [51]	15 [422]	13 <sup>25/32</sup> [352]	0	0	0	1 [25]	2 [51]	0	111 [50]
06EM	17 <sup>1/2</sup> [445]	16 <sup>11/32</sup> [415]	15 <sup>5/8</sup> [397]	2 [51]	15 [422]	13 <sup>25/32</sup> [352]	0	0	0	1 [25]	2 [51]	0	117 [53]
07EM	17 <sup>1/2</sup> [445]	16 <sup>11/32</sup> [415]	15 <sup>5/8</sup> [397]	2 [51]	15 [422]	13 <sup>25/32</sup> [352]	0	0	0	1 [25]	2 [51]	0	124 [56]
07EY	21 [533]	19 <sup>27/32</sup> [504]	19 <sup>1/8</sup> [487]	2 [51]	18 <sup>1/2</sup> [511]	17 <sup>9/32</sup> [441]	0	0	0	1 [25]	2 [51]	0	137 [62]
09EZ	21 [533]	19 <sup>27/32</sup> [504]	19 <sup>1/8</sup> [487]	2 [51]	18 <sup>1/2</sup> [511]	17 <sup>9/32</sup> [441]	0	0	0	1 [25]	2 [51]	0	148 [67]
10EZ	21 [533]	19 <sup>27/32</sup> [504]	19 <sup>1/8</sup> [487]	2 [51]	18 <sup>1/2</sup> [511]	17 <sup>9/32</sup> [441]	0	0	0	1 [25]	2 [51]	0	152 [69]
12ER	24 <sup>1/2</sup> [622]	23 <sup>11/32</sup> [593]	22 <sup>5/8</sup> [575]	2 [51]	22 [600]	20 <sup>25/32</sup> [530]	0	0	0	1 [25]	2 [51]	0	160 [73]

[ ] Designates Metric Conversions

**Before proceeding with installation, refer to installation instructions packaged with each model, as well as complying with all Federal, State, Provincial, and Local codes, regulations, and practices.**

Rheem Sales Company, Inc.  
P.O. Box 17010, Fort Smith, AR 72917

"In keeping with its policy of continuous progress and product improvement, Rheem reserves the right to make changes without notice."