



RCBA- MULTIFLEX® INDOOR COILS

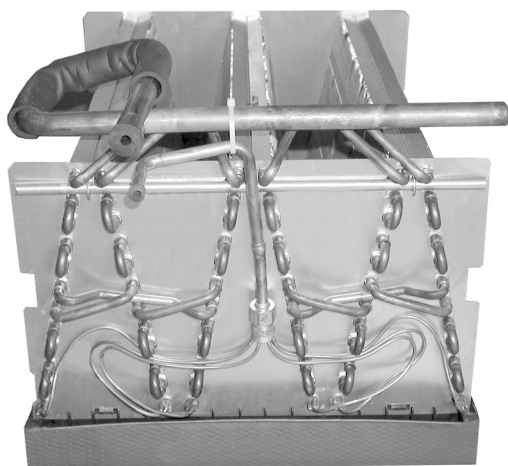
AIRFLOW CAPACITIES 600-2000 CFM [218-944 L/s]

Ruud Value Series Indoor Coils are designed for use with Ruud Value Series outdoor units in upflow, downflow and horizontal configurations.

The MultiFlex® coils provide nominal capacities ranging from 18,000 to 60,000 BTUH [5.27 to 17.58 kW].

The patented single-row, single-coil pleated concept results in extremely low pressure drops and corresponding easy cleaning.

Drain connections may be made from either side of the coil.



Engineering Features

- Constructed of enhanced aluminum fins bonded to inner grooved copper tubing.
- Coils have sweat fitting refrigerant connections.
- Primary condensate drain connections are 3/4" [19 mm] F.N.P.T.
- Coils are A.R.I. certified for system application with a wide variety of Ruud Value Series outdoor units.
- Condensate drain pan is constructed of a high grade, heat resistant, corrosion free polymer material.



MODEL NUMBER IDENTIFICATION

<u>R</u>	<u>C</u>	<u>B</u>	<u>A</u>	-	<u>37</u>	<u>65</u>	<u>G</u>	<u>H</u>
Ruud Value Series	Coil	Type of Coil	Design Series		Nominal Capacity	Metering Device	Airflow/Refrigerant Connections	Horizontal Drain Pan
		B = Flowcheck Standard Cooling/ Heat Pump	A = 1st Design		24 = 18,000 to 24,000 BTUH [5.27 to 7.03 kW] 37 = 30,000 to 36,000 BTUH [8.79 to 10.55 kW] 48 = 42,000 to 48,000 BTUH [12.31 to 14.06 kW] 60 = 60,000 BTUH [17.58 kW]	** = Flowcheck Piston (RCBA Coils)		

REFRIGERANT METERING—RCBA Coils
PISTON SIZES (PART NUMBER 61-23414-**)

MODEL/SIZE TON [kW]	10PJA- HEAT PUMP	10AJA- CONDENSING UNITS
	PRELIMINARY 10 SEER RECIP. MODELS	10 SEER RECIP. MODELS
18/1.5 [5.28]	53	51
24/2.0 [7.03]	61	61
30/2.5 [8.79]	70	65
36/3.0 [10.55]	68	73
42/3.5 [12.31]	78	78
48/4.0 [14.07]	N/A	78
60/5.0 [17.58]	N/A	89

[] Designates Metric Conversions

RXCT- EXPANSION VALVE CONVERSION KIT FOR RCBA INDOOR COILS

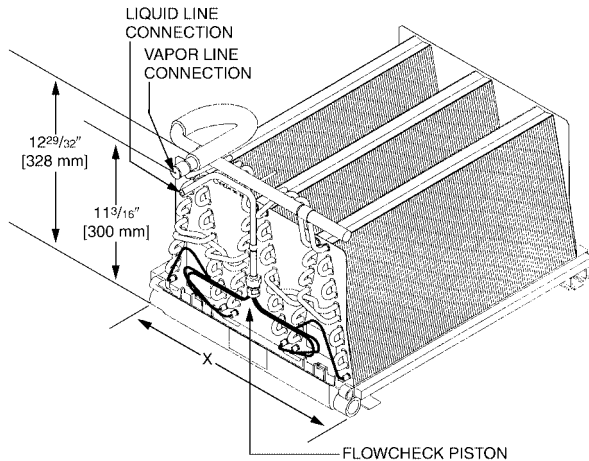
Use an expansion valve kit to convert RCBA- indoor coils to High Efficiency Coils

EXPANSION VALVE KIT	WITH RCBA- COIL	APPLICATION MODELS	PISTON SIZE
RCBA- APPLICATIONS—12 SEER COOLING ONLY MODELS			
RXCT-BCA	RCBA-24	1½ Ton [5.28 kW]	.099
RXCT-BCB	RCBA-24	2 Ton [7.03 kW]	.120
RXCT-BCC	RCBA-37	2½ Ton [8.79 kW]	.140
RXCT-BCD	RCBA-36/37	3 Ton [10.55 kW]	.157
RXCT-BCE	RCBA-48	3½ Ton [12.31 kW] & 4 Ton [14.07 kW]	.157

[] Designates Metric Conversions

UNIT DIMENSIONS & WEIGHTS— RCBA- UNCASED COILS

MODEL NUMBER	UNCASED COIL "X" IN. [mm]	CONNECTION SIZE (IN.) [mm]		UNIT WEIGHT (LBS.) [Kg]	
		SWEAT		UNCASED COIL	
		LIQUID I.D.	SUCTION I.D.	WT.	SHIP WT.
RCBA-24	12 ¹ / ₄ [311]	3/8 [10]	3/4 [19]	15 [6.80]	17 [7.11]
RCBA-37	15 ³ / ₄ [400]			20 [9.07]	22 [9.98]
RCBA-48	19 ¹ / ₄ [489]		7/8 [22]	26 [11.79]	29 [13.15]
RCBA-60	22 ³ / ₄ [578]			32 [14.51]	35 [15.88]

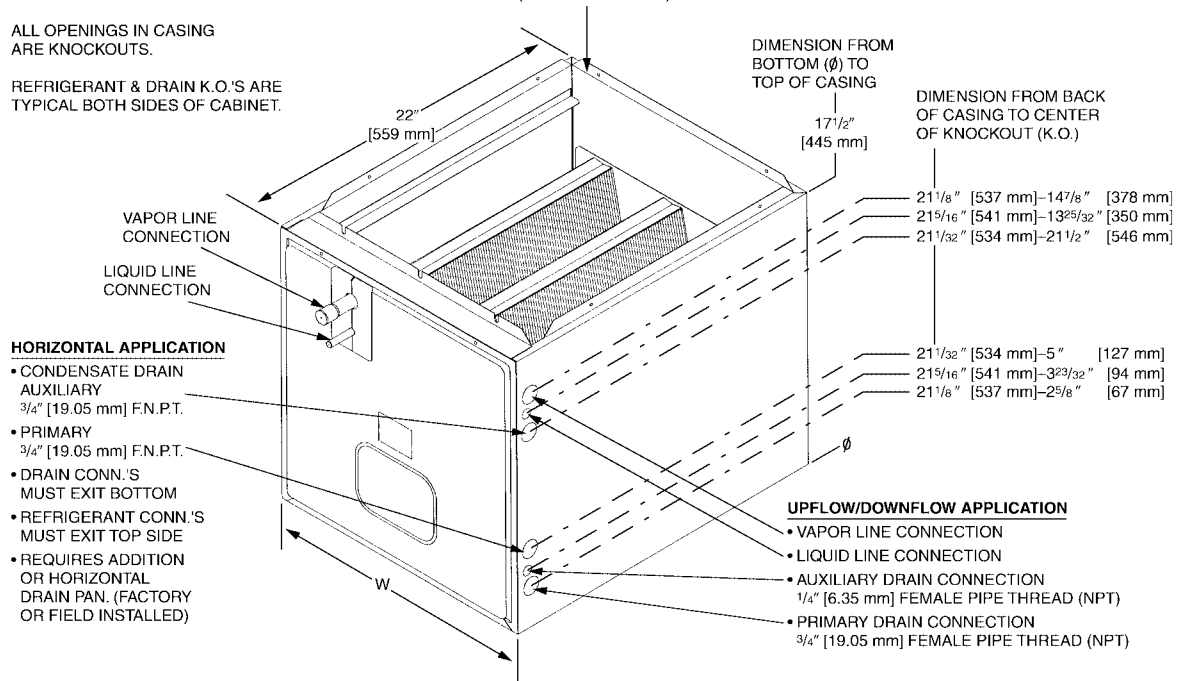


UNIT MAY BE INSTALLED UPFLOW, DOWNFLOW, HORIZONTAL RIGHT OR LEFT HAND AIR SUPPLY.

ALL OPENINGS IN CASING ARE KNOCKOUTS.

REFRIGERANT & DRAIN K.O.'S ARE TYPICAL BOTH SIDES OF CABINET.

DUCT FLANGES MUST BE FORMED @ PERFORATION. (TOP AND BOTTOM)



TXBC CABINET WIDTH SUPPLY & RETURN AIR DIMENSIONS WITH TXBC COIL CASING

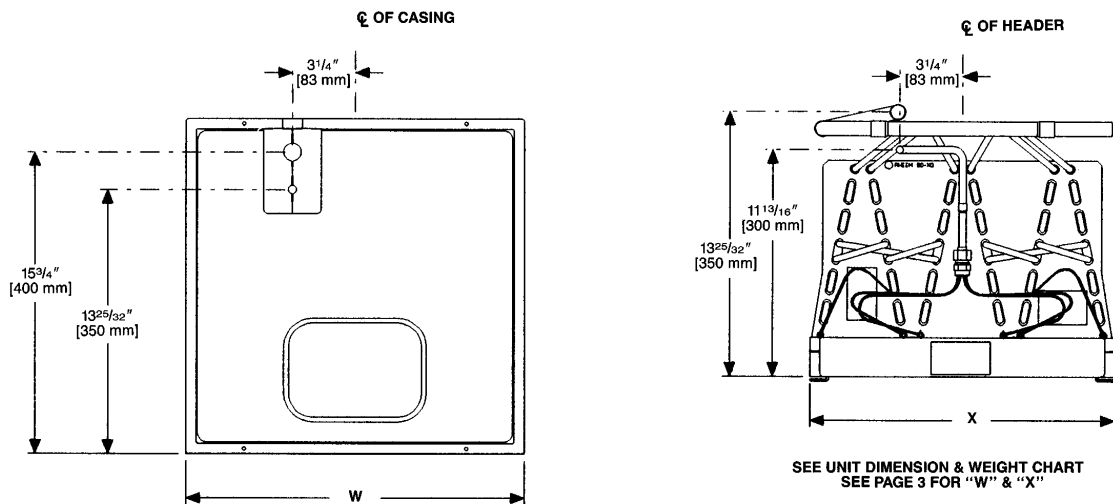
UPFLOW/HORIZONTAL

TXBC CABINET WIDTH		14" [356]	17.5" [445]	21" [533]	24.5" [622]
SUPPLY AIR	"W" IN. [mm]	13" [330]	16 1/2" [419]	20" [508]	23 1/2" [597]
	"D" IN. [mm]	19 5/8" [498]	19 5/8" [498]	19 5/8" [498]	19 5/8" [498]
RETURN AIR	"W" IN. [mm]	13" [330]	16 1/2" [419]	20" [508]	23 1/2" [597]
	"D" IN. [mm]	19 7/8" [505]	19 7/8" [505]	19 7/8" [505]	19 7/8" [505]

DOWNFLOW

TXBC CABINET WIDTH		14" [356]	17.5" [445]	21" [533]	24.5" [622]
SUPPLY AIR	"W" IN. [mm]	13" [330]	16 1/2" [419]	20" [508]	23 1/2" [597]
	"D" IN. [mm]	19 7/8" [505]	19 7/8" [505]	19 7/8" [505]	19 7/8" [505]
RETURN AIR	"W" IN. [mm]	13" [330]	16 1/2" [419]	20" [508]	23 1/2" [597]
	"D" IN. [mm]	19 5/8" [498]	19 5/8" [498]	19 5/8" [498]	19 5/8" [498]

"G(-)" FRONT CONNECTION FOR RCBA-



I235

Front Connection
Designated as (G) in model number.

NOTE: Models 14 and 17 have front connections only unless option 31 is available, which allows side connections. Side connection can also be field-installed to models 21 and 24.

PHYSICAL DATA

COIL MODEL NUMBER	APPROX. DESIGN AIRFLOW RANGE (CFM) [L/s]	FACE AREA (SQ. FT.) [m ²]	FINS/IN.	NUMBER OF SLABS
RCBA-24**	600-800 [283.1-377.6]	5.07 [.471]	18	4
RCBA-37**	1000-1200 [471.1-566.3]	7.60 [.706]		6
RCBA-48**	1400-1600 [660.7-755.1]	10.13 [.941]		8
RCBA-60**	2000 [943.9]	12.67 [1.18]		10

NOTES: **—Indicates piston size on RCBA coils.

[] Designates Metric Conversions

UNCASED COIL APPLICATION—REPLACEMENT OR AIR HANDLER UNITS WITHOUT COILS

COIL MODEL NUMBER	NO. COIL SLABS	AIR HANDLER			
		14AH	17AH	21AH	24AH
RC(B)A-24	4	X			
RC(B)A-37	6		X		
RC(B)A-48	8			X	
RC(B)A-60	10				X

NOTES: Requires coil code "00" (without coil—with plenum) in unit model number.
All require horizontal drain pan accessory (RXBD-DA) for horizontal applications.
Cabinet widths 14 = 14" [355.6], 17 = 17.5" [444.5], 21 = 21" [533.4], 24 & 25 = 24.5" [622.3].

RCBA COIL WITH TXBC CASED APPLICATION

Coil can be matched to heating products as listed in table below.

NO. OF COIL SLABS	COIL PLENUM WIDTH	GAS FURNACE 80% UPFLOW, DOWNFLOW & HORIZONTAL MODELS					GAS FURNACE 34" 90 PLUS UPFLOW, DOWNFLOW & HORIZONTAL CONDENSING MODELS				
		05	07	10	12	15	04	06	07	10	12
4	14	A									
4	17.5		A & B				A & B	A & B			
6	17.5	E	A				A	A			
6	21			A & B					A & B	A & B	
8	21		E	A					A	A	
8	24.5				A & B	A & B					A & B
10	24.5			E	A	A					A
FURNACE WIDTH IN. [mm]		14 [355.6]	17.5 [444.5]	21 [533.4]	24.5 [622.3]		17.5 [444.5]		21 [533.4]		24.5 [622.3]

NOTES: BOLD AREAS INDICATE FLUSH FIT APPLICATIONS

- A—Upflow/Downflow/Horizontal Application. Horizontal application requires field installed horizontal drain pan accessory RXBD-DA (One pan fits all).
- B—Upflow/Downflow/Horizontal Application. Requires use of RXBA-AA internal coupler accessory.
- E—Upflow and Horizontal application requires external plenum adapter accessory RXBA-AC.
Downflow/Horizontal application requires external plenum adapter accessory RXBA-AD.

[] Designates Metric Conversions

RCBA- PRESSURE DROP

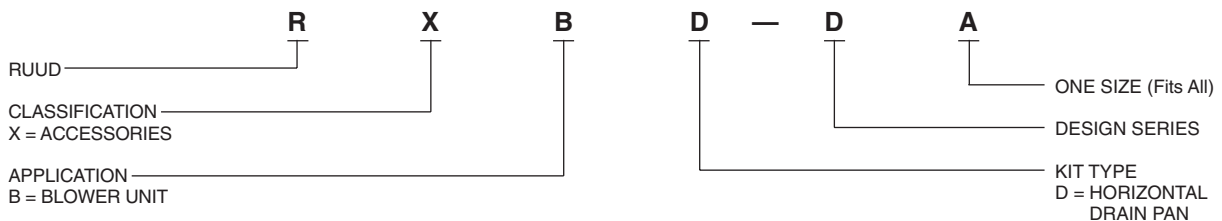
No. of Coil Slabs		4		6		8		10	
Coil Cooling Size		18, 24		30, 36		42, 48		60	
Coil Position (Airflow)		Up	Down	Up	Down	Up	Down	Up	Down
Static Pressure Drop Through Wet Cooling Coil In. W.C. [kPa]	AIRFLOW CFM [L/s]								
	.05 [.01]	578 [272.8]	521 [245.9]	752 [354.9]	673 [317.6]	895 [422.4]	764 [360.6]	1005 [474.3]	885 [417.7]
	.10 [.02]	889 [419.6]	827 [390.3]	1113 [525.3]	977 [461.1]	1299 [613.1]	1103 [520.6]	1559 [437.8]	1308 [617.3]
	.15 [.04]	1158 [546.5]	977 [461.1]	1416 [668.3]	1244 [587.1]	1641 [774.5]	1386 [654.1]	1939 [915.1]	1605 [757.5]
	.20 [.05]	1346 [635.2]	1149 [542.3]	1647 [777.3]	1413 [666.9]	1960 [925.0]	1637 [772.6]	2271 [1071.8]	1883 [888.7]
	.25 [.06]	1546 [729.6]	1271 [599.8]	1876 [885.4]	1633 [770.7]	2187 [1032.1]	1826 [861.8]	2552 [1204.4]	2134 [1007.1]
	.30 [.07]	1665 [785.8]	1401 [661.2]	2065 [974.6]	1784 [841.0]	2429 [1146.4]	2013 [950.0]	2890 [1363.9]	2365 [1116.2]

NOTES: Air pressure drop for horizontal airflow is the same as that shown for upflow.

ACCESSORIES

HORIZONTAL DRAIN PAN KIT RXBD-DA

This horizontal drain pan accessory is for installation in cased indoor cooling coils. This accessory allows a coil to be converted for horizontal application. The same drain pan fits all RCBA-coils. (Kit has external metal drain pan extension required for gas furnace applications only).



[] Designates Metric Conversions

GENERAL TERMS OF LIMITED WARRANTY

ICECOSM will furnish a replacement for any part of this product which fails in normal use and service within the applicable period stated, in accordance with the terms of the limited warranty.

For Complete Details of the Limited Warranty, Including Applicable Terms and Conditions, See Your Local Installer or visit www.ICECOhvac.com.

MultiFlex Coil leaks caused by
factory defectsFive (5) Years
Any PartFive (5) Years

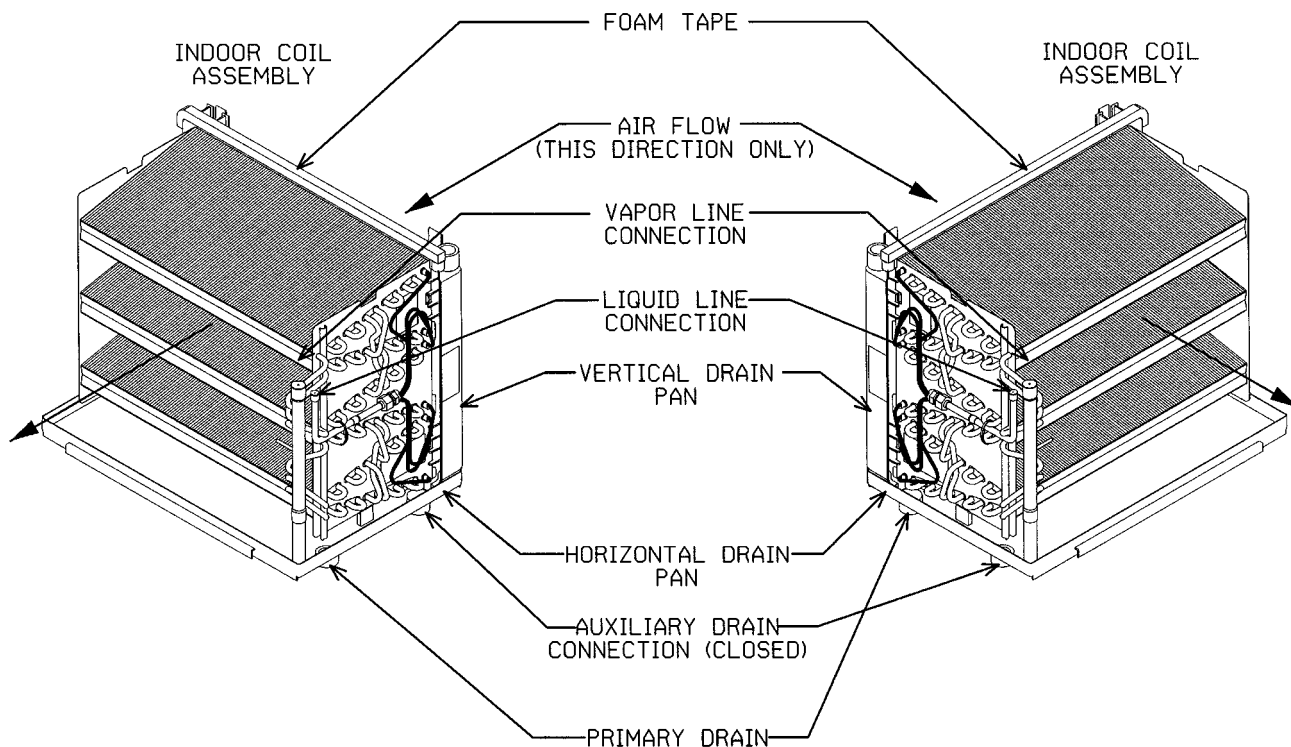
RCBA- HORIZONTAL INDOOR COIL ASSEMBLY

Figure 1.

Indoor coil and drain pan set-up for horizontal left-hand air supply. Designated as (L) in model number. Side connection coil shown.

Figure 2.

Indoor coil and drain pan set-up for horizontal right-hand air supply. Designated as (R) in model number. Side connection coil shown.



*Foam Tape

Foam tape is factory installed on the sides of the vertical drain pan if the coil is provided in a coil casing. Foam tape is shipped loose with uncased coils.

If uncased coil is installed vertical in a coil casing or air handler, install the foam tape on the sides of the vertical drain pan.

If installed horizontal, **DO NOT** install foam tape on the side of the vertical drain pan that fits into the horizontal drain pan. Remove foam tape, if already attached, from the side of the vertical drain pan that fits into the horizontal drain pan.

If coil, vertical or horizontal, is installed in coil casing or air handler with optional "Florida Insulation," **DO NOT** install foam tape on either side of the vertical drain pan.

1151

ACCESSORIES (continued)

INTERNAL COUPLER ACCESSORY RXBA-AA

This internal coupler accessory is for installation in cased indoor cooling and heat pump coils. This allows a nominal size coil to be installed in the next larger size casing.

PLENUM ADAPTER ACCESSORY RXBA-AC AND RXBA-AD

This internal coupler accessory is for installation in cased indoor cooling and heat pump coils. This allows a nominal size coil to be installed in the next larger size casing.

R

X

B

A - A

A

COUPLING COMBINATIONS

COIL TO CASING TO FURNACE

CODE	NOMINAL COIL BTUH [kW]	CASING WIDTH IN. [mm]	FURNACE WIDTH IN. [mm]	INTERNAL EXTERNAL
A	24,000 [7.03] 36,000 [10.55] 48,000 [14.07]	17.5 [444.5] 21.0 [533.4] 24.5 [622.3]	17.5 [444.5] 21.0 [533.4] 24.5 [622.3]	Internal
C	36,000 [10.55] 48,000 [14.07] 60,000 [17.58]	17.5 [444.5] 21.0 [533.4] 24.5 [622.3]	14.0 [355.6] 17.5 [444.5] 21.0 [533.4]	External Upflow Only
D	36,000 [10.55] 48,000 [14.07] 60,000 [17.58]	17.5 [444.5] 21.0 [533.4] 24.5 [622.3]	14.0 [355.6] 17.5 [444.5] 21.0 [533.4]	External Downflow/ Horizontal

RCGJ-/RCHJ- HIGH EFFICIENCY COILS

DESIGN SERIES
A = 1ST DESIGN

KIT TYPE
A = COUPLER/COMBINATION (ADAPTERS)

APPLICATIONS
B = BLOWER UNITS

CLASSIFICATION
X = ACCESSORIES

RUUD VALUE SERIES

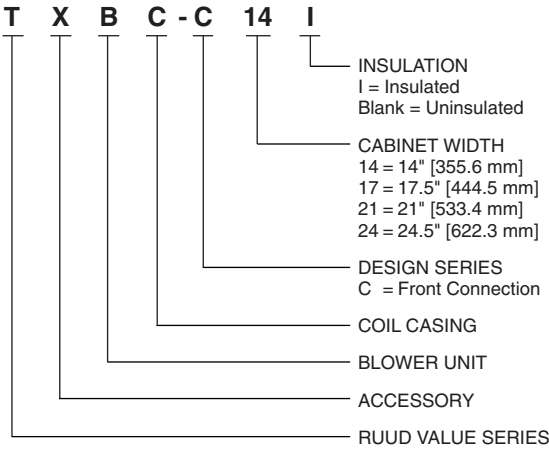
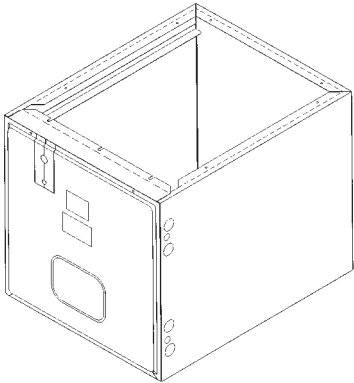
[] Designates Metric Conversions

RXBC- INDOOR COIL CASING

UNIT DIMENSIONS & WEIGHTS—RXBC- INDOOR COIL CASINGS

MODEL NUMBER	WIDTH "W" IN. [mm]	HEIGHT IN. [mm]	DEPTH IN. [mm]	UNIT WEIGHT		SUPPLY ①		RETURN ②	
				WT. [Kg]	SHIP WT. [Kg]	WIDTH IN. [mm]	DEPTH IN. [mm]	WIDTH IN. [mm]	DEPTH IN. [mm]
TXBC-14	14 [356]	17 1/2 [445]	22 [559]	17 [7.11]	19 [8.62]	13 [330]	19 5/8 [498]	13 [330]	19 7/8 [505]
TXBC-17	17 1/2 [445]			19 [8.62]	21 [5.33]	16 1/2 [419]		16 1/2 [419]	
TXBC-21	21 [533]			20 [9.07]	23 [10.43]	20 [508]		20 [508]	
TXBC-24	24 1/2 [622]			22 [9.98]	25 [11.34]	23 1/2 [597]		23 1/2 [597]	

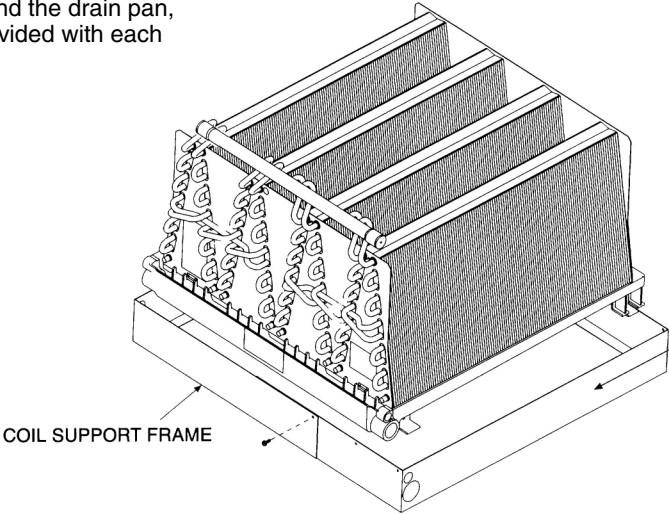
NOTES: ① Supply dimensions for upflow & horizontal units. This is return dimensions for downflow units.
② Return dimensions for upflow & horizontal units. This is supply dimensions for downflow units.



[] Designates Metric Conversions

AIR BYPASS FRAME FOR UNCASSED COILS— (STANDARD ON ALL UNCASSED COILS)

To prevent air bypass around the drain pan, coil support frames are provided with each uncased coil.



Frame is only used when coil is not installed in other than standard coil casing. Air bypass frame is not for use with TXBC coil casing or AH series air handlers.

1423

NOTES

Before proceeding with installation, refer to installation instructions packaged with each model, as well as complying with all Federal, State, Provincial, and Local codes, regulations, and practices.

**RUUD
AIR CONDITIONING
DIVISION**

5600 Old Greenwood Road, Fort Smith, Arkansas 72908



"In keeping with its policy of continuous progress and product improvement, ICECO reserves the right to make changes without notice."