

# RAYPAK ILLUSTRATED PARTS LIST

The parts listed are for standard equipment for this model type. Raypak reserves the right to substitute, delete or change any part without notification. The addition of options may also change some of the parts. Order replacement parts from actual heater components.

## HEAT PUMP POOL HEATER POOL MODELS 5450, 6450 and 8450

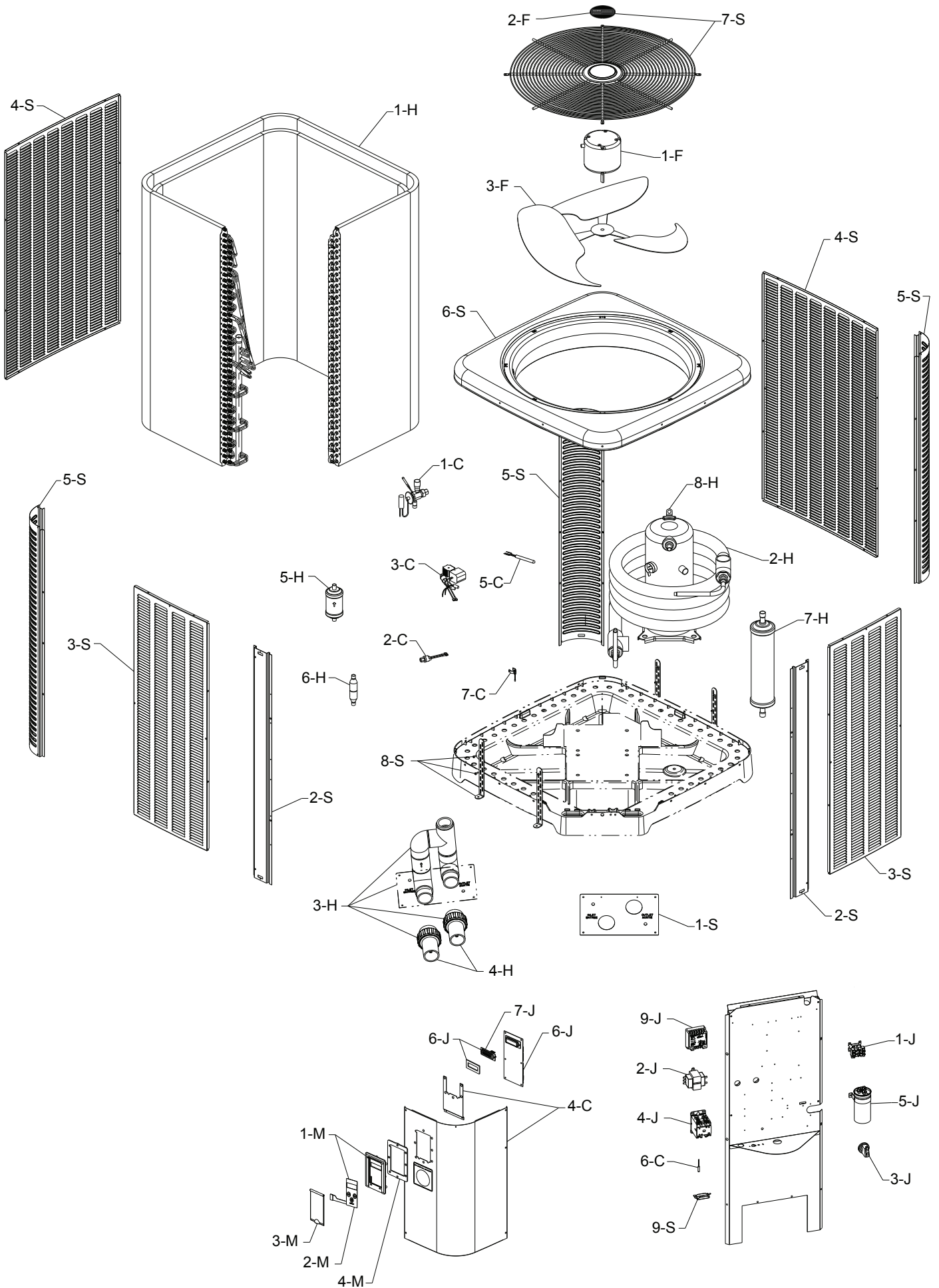
DATES OF MANUFACTURE: 01-21-17 THROUGH CURRENT



For detailed instructions, see “How to Use your Raypak Illustrated Parts List”, Catalog No. 9001.10

**Raypak**<sup>®</sup>

A Rheem<sup>®</sup> Company



CALLOUT	DESCRIPTION	RAYPAK / RHEEM / RUUD		
		5450	6450	8450
<b>C</b>	<b>CONTROLS</b>			
1-C	TX Valve Heat	H000173	H000173	H000077
2-C	Low Pressure Switch	H000078	H000078	H000078
3-C	High Pressure Switch	H000079	H000079	H000079
4-C	Control Cover	H000349	H000349	H000349
5-C	Temperature Sensor 100K	H000329	H000329	H000329
6-C	Ambient Temperature Sensor	H000332	H000332	H000332
7-C	Coil Sensor 3/8 Diameter Tube	H000333	H000333	H000333
	7/8 Diameter Tube	H000334	H000334	H000334
<b>H</b>	<b>HEAT TRANSFER</b>			
1-H	Evaporator Coil	N/A	N/A	N/A
2-H	Heat Exchanger	H000368	H000368	H000369
3-H	Bypass Assembly (Includes 1-S)	H000365	H000365	H000365
4-H	PVC Union with Built-In Drain	H000317	H000317	H000317
5-H	Liquid Line Drier Heat	H000011	H000011	H000011
6-H	Check Valve	H000006	H000006	H000006
7-H	Charge Compensator	N/A	N/A	H000255
8-H	Compressor 1 PH	H000348	H000012	H000014
9-H	Compressor Power Plug (Not Shown)	H000271	H000271	H000271
<b>F</b>	<b>FAN</b>			
1-F	Fan Motor (825 RPM)	H000296	H000296	H000296
2-F	Fan Grille Cap Cover	H000346	H000346	H000346
3-F	Fan Blade (3-Blade)	H000371	H000371	H000371
<b>J</b>	<b>CONTROL BOX</b>			
1-J	Fan Relay DPST	H000299	H000299	H000299
2-J	Transformer	H000331	H000331	H000331
3-J	Water Pressure Switch	H000025	H000025	H000025
4-J	Contactator 1 PH	H000043	H000043	H000043
5-J	Capacitor 1 PH	H000127	H000127	H000051
6-J	Control Board	H000302	H000302	H000302
7-J	LCD Display	H000336	H000336	H000336
8-J	Fuse (Not Shown)	H000370	H000370	H000370
9-J	Monitor Line Voltage 1 PH	H000291	H000291	H000291
<b>M</b>	<b>MISCELLANEOUS</b>			
1-M	Control Bezel Digital (Includes Switch Decal)	H000325	H000325	H000325
2-M	Switch/Decal Membrane	H000326	H000326	H000326
3-M	Control Bezel Cover	H000327	H000327	H000327
4-M	Bezel Seal Gasket	H000344	H000344	H000344
5-M	Touch-up Paint	750260	750260	750260
<b>S</b>	<b>SHEETMETAL</b>			
1-S	Access Panel	H000352	H000352	H000352
2-S	Center Post	H000345	H000366	H000366
3-S	Front and Right Side Jacket Panel	H000358	H000359	H000359
4-S	Rear and Left Side Jacket Panel	H000360	H000361	H000361
5-S	Corner Jacket Panel	H000353	H000354	H000354
6-S	Jacket Top	H000355	H000355	H000355
7-S	Grille Fan Guard (Includes 2-F)	H000356	H000356	H000356
8-S	Hurricane Bracket	H000357	H000357	H000357
9-S	Ambient Temperature Sensor Cover	H000362	H000362	H000362

\* NOTE: R-410 A components not compatible with R22 units.



Registered Quality Management System

**[www.raypak.com](http://www.raypak.com)**

Raypak, Inc., 2151 Eastman Avenue, Oxnard, CA 93030 (805) 278-5300 FAX (805) 278-5489  
Litho In U.S.A.