

RAYPAK SERVICE INSTRUCTIONS

**PROTÉGÉ SERIES SAND FILTERS RPSF, RPSFP
KIT 018215F, CLAMP LOCK AND O-RING**

IMPORTANT NOTICE: These instructions are for the use of qualified individuals specially trained and experienced in the installation and maintenance of this type of equipment and related system components. Installation and service personnel are required by some states to be licensed. Persons not qualified shall not attempt to install, service, or maintain this equipment.

DANGER – SHOCK HAZARD: Make sure electrical power to attached pump and heaters is disconnected to avoid damage to components, potential serious personal injury or death.

WARNING: Make sure water & power have been turned OFF before making any repairs or service to the unit.

Scope

This kit provides the part required to replace the lock ring assembly for the Protégé Line of pumps and filters.

Parts List Kit 018215F

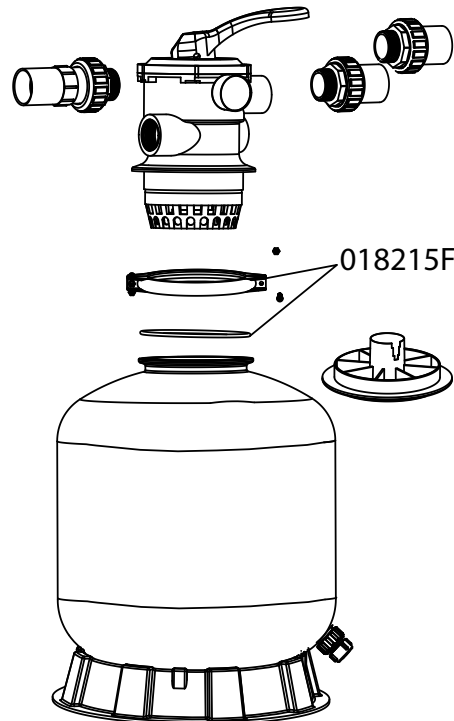
Components
Lock Ring Assembly
O-Ring

Required Tools

- Phillips screwdriver

Recommended Materials

- Any quality generic brand of appropriate lubricant for application onto O-rings and threads of plastic parts such as "Water Lube".



Replacing the Clamp Lock and O-Ring Filter Neck

1. Turn off the electrical power at the Pump's power switch and/or unplug it at the receptacle.
2. Relieve the pressure on the filter by loosening the drain valve, as shown in **Figure 1**.



Figure 1. Drain Valve

3. Disconnect the water piping at the bulkhead fittings, as shown in **Figure 2**.



Figure 2. Multiport Valve, Piping Connection Points

4. With a Phillip head screwdriver, loosen the clamp that fastens the 6-way multiport valve to the filter, as shown in **Figure 1**.
5. Separate the two halves of the clamp and set it aside, as shown in **Figure 3**.



Figure 3. Clamp

6. Lift the old 6-way multiport valve off the filter. Remove the O-ring, as shown in **Figure 4**.

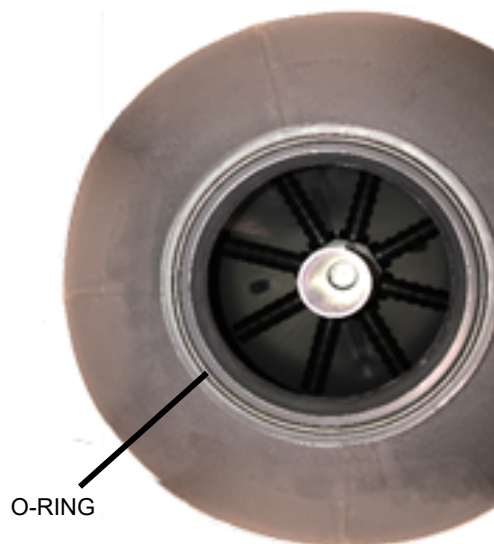


Figure 4. O-Ring Replacement

7. Apply water lube to the replacement O-ring and re-install it into the filter's groove, as shown in **Figure 4**.
8. Place the new 6-way multiport valve onto the filter. Guide the 6-way multiport valve onto the stand pipe carefully. If the sand was installed correctly, the stand pipe should be right on center.
9. Re-install the split clamp and tighten.
10. Apply water lube to the O-rings on the bulkhead unions and install those fittings onto the 6-way multiport valve.
11. Rotate handle to the FILTER position and turn on the pump. Check for leaks.