

Job: _____

Engineer: _____

Contractor: _____

Prepared By: _____ Date: _____

Model: _____ Indoor/Outdoor: _____ MBTUH Input: _____

Hi Delta[®] - Type P

Commercial Pool Heaters
Models 992B-1262B

Sealed Combustion Chamber

100% Factory Fire Tested

Efficiency: 85%

Minimum Non-condensing Inlet Temperature: 105°F

Thermal Shock Proof Heat Exchanger

Limited Twenty-year Thermal Shock Warranty

Limited Five-year Heat Exchanger Warranty

Full Safety Diagnostics with Fault History

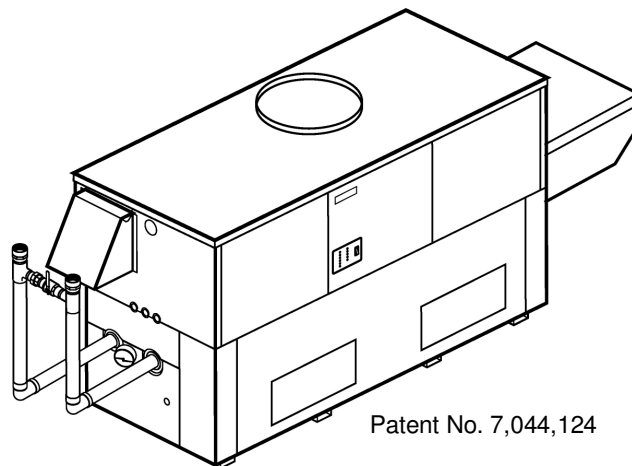
PolyTuf Powder Coated Cabinet

No Combustible Floor Shield Required

Fan-assisted

Non-ferrous Bypass

Patented Burner Security Blanket



Patent No. 7,044,124



Proudly Assembled in the USA

Standard "H" Bypass Shown

Heat Exchanger

- Brass Headers
- ASME Inspected and Stamped
160 PSIG Working Pressure
- National Board Approved
- Cupro-Nickel Finned Tubing
- ASME Steel Tube Sheet
- Silicone High-Temp O-Rings
- 125 PSIG ASME Pressure Relief Valve
- Temperature and Pressure Gauge
- Water Connections
 - Left – Standard
 - Right – Option A-6
- Bronze Pump, 1/2 HP, 120V, 60Hz
- Non-ferrous Pool Bypass

Controls

- 120V, 60Hz, 1Ø Power Supply
- 120/24V 60Hz Transformer
- 100% Shut-off/Lockout
- Hot Surface Ignition System
- Remote Flame Sensor
- High Limit Control, Auto Reset
- On/Off Power Switch
- Manual Shut-off, Front-mounted
- Flow Switch
- Blocked Vent Pressure Switch
- Combustion Air Proving Switches
- Economaster Pump Time Delay
- Poolstat
- Diagnostics Panel with LCD Panel
2 Lines, 20 Characters

Gas Train

- Combination Valves
- On/Off Firing
- Low Gas Pressure Switch, Manual
- Fuel
 - Natural Gas
 - Propane Gas
- Design Certified ANSI Z21.56/
CSA 4.7

Burner

- Ultra-low NOx:
Less than 20 PPM

Construction

- Indoor/Outdoor Construction
- Enclosed Front Controls
- CSA Low Lead Certified ≤ .25%
Lead

Venting

- Vent Location
 - Top – Standard
 - Rear – Option D-14
- Vent Termination Cap
 - Outdoor – Option D-11
 - Indoor, Horizontal –
Option D-15
 - Indoor, Vertical (by others)
- Combustion Air
 - In-Line Filter Kit (TruSeal only)
– Option D-17
 - Air Intake Elbow –
Option D-16

Multi-Heater Controllers

- B-26 2-Stage Digital
- B-21 4-Stage Digital
- B-__ TempTracker Mod+ (Up to 16
Boilers)
- B-60 Stage Interface

Options

- C-6 Ignition Module, Manual
Reset
- D-21 TruSeal[®] Direct Vent
 - Left Side - Standard
 - Right Side - Optional
- F-10 Low Water Cut-off, Remote
Probe
- P-__ Cold Water Run System
(See Page 3 Sizes 992B-
1262B only)
- S-2 High Gas Pressure Switch,
Manual (Dual switches on
Model 1532B)
- X-1 SureRack[®] Kit (Lower Unit
Requires Manifold
Modification)
- X-2 SureRack[®] Kit, Above Grade
Add-on (Used with X-1)
(Lower Unit Requires Manifold
Modification)

Regulatory Agency Requirements

- G-1 CSD-1

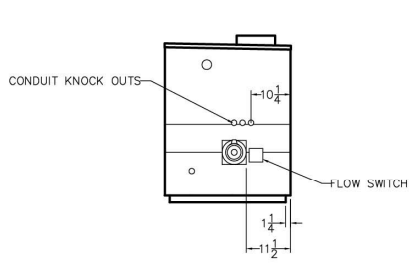


Raypak[®]

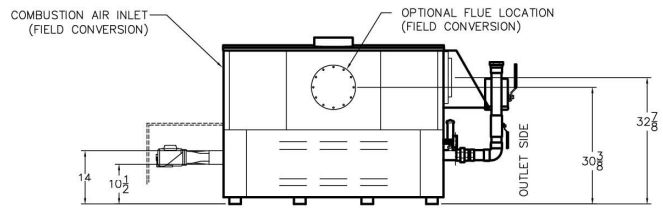
A Rheem Company

Hi Delta – Type P Models 992B-1262B (H-Bypass)

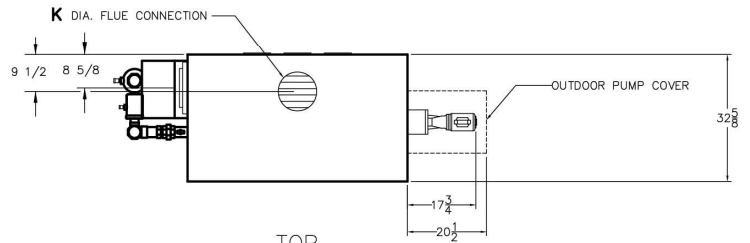
Model



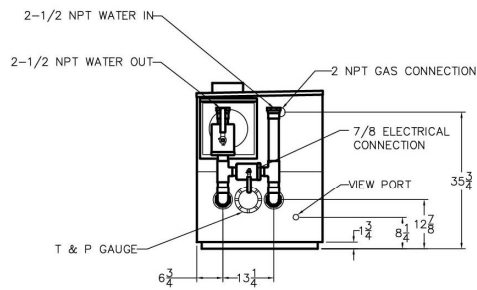
RIGHT



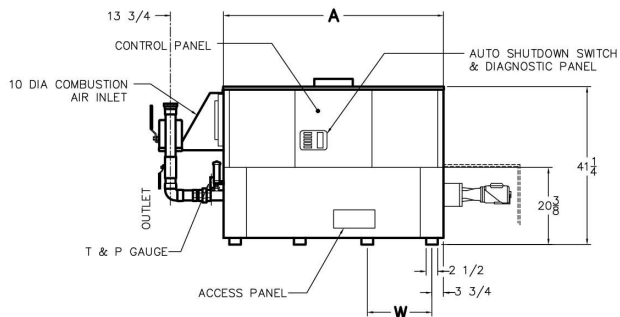
BACK ROTATED 180°



TOP



LEFT



FRONT

RATE OF FLOW AND PRESSURE DROP

Model	Max. Flow		
	GPM	ΔP (ft)	ΔT
992B	132	14.0	13
1262B	132	15.5	16

Model	MBTUH		A Width	K	W	Amp Draw (w/ Pump)	Shipping Weight (Lbs.)
	Input	Output					
992B	990	842	57-1/8	10	16-13/16	< 16	900
1262B	1260	1071	68-1/2	12	20-9/16	< 16	1010

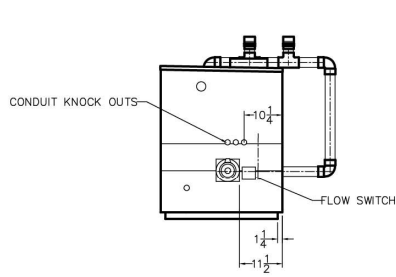
Dimensions are in inches.

Ratings shown are for elevations up to 4,500 feet and for natural or propane gas.

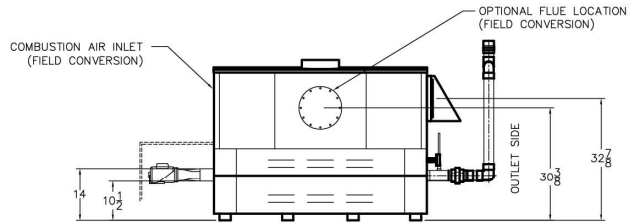
For installation at elevations over 4,500 feet, please contact manufacturer.

Hi Delta – Type P Models 992B-1262B (Cold Water Run Bypass)

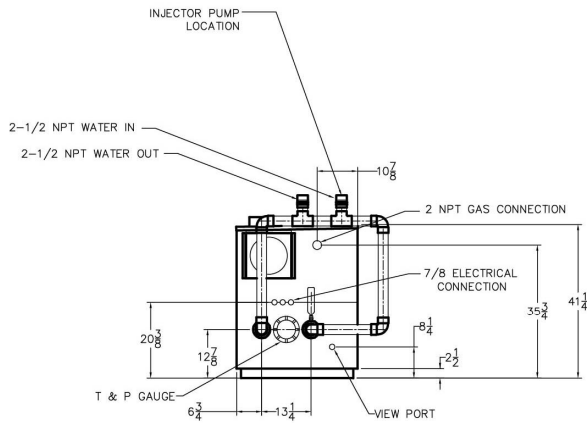
Model



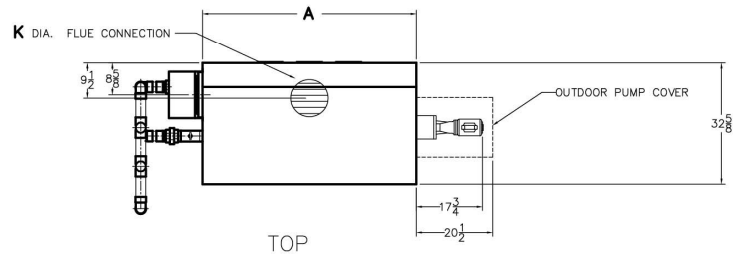
RIGHT SIDE



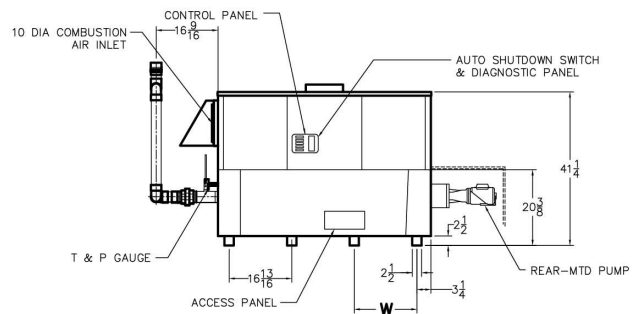
BACK ROTATED 180°



LEFT SIDE



TOP



FRONT

RATE OF FLOW AND PRESSURE DROP

Model	Max. Flow		
	GPM	ΔP (ft)	ΔT
992B	132	14.0	13
1262B	132	15.5	16

Model	MBTUH		A Width	K	W	Amp Draw (w/ Pump)	Pump HP	Injector Pump HP	Shipping Weight (Lbs.)
	Input	Output							
P 992B	990	842	57-1/8	10	16-13/16	< 16	1/2	1/3 *	1000
P 1262B	1260	1071	68-1/2	12	20-9/16	< 16	1/2	1/3 *	1055

Dimensions are in inches.

Ratings shown are for elevations up to 4,500 feet and for natural or propane gas.

For installations at elevations over 4,500 feet, please contact manufacturer.

* Separate 120 VAC or 240 VAC 1Ø power required for Cold Water Run option.

Injector pump shipped loose for field installation at bypass inlet.

