

**The Pool and Spa Heating Experts<sup>SM</sup>**

# VERSA

## ABOVE- GROUND POOL HEATER

model **105**

- 105,000 BTUH
- Natural or propane gas
- Indoor/outdoor
- Standard stackless top
- User-friendly control panel
- High efficiency for economical operation
- Electronic ignition or millivolt pilot
- Lightweight combustion chamber
- Copper fin tube heat exchanger design
- Completely field serviceable
- Small footprint
- Glass-lined cast iron castings



Photo courtesy of Ester Williams, Delair Group

# VERSA 105 Above-Ground Pool Heater

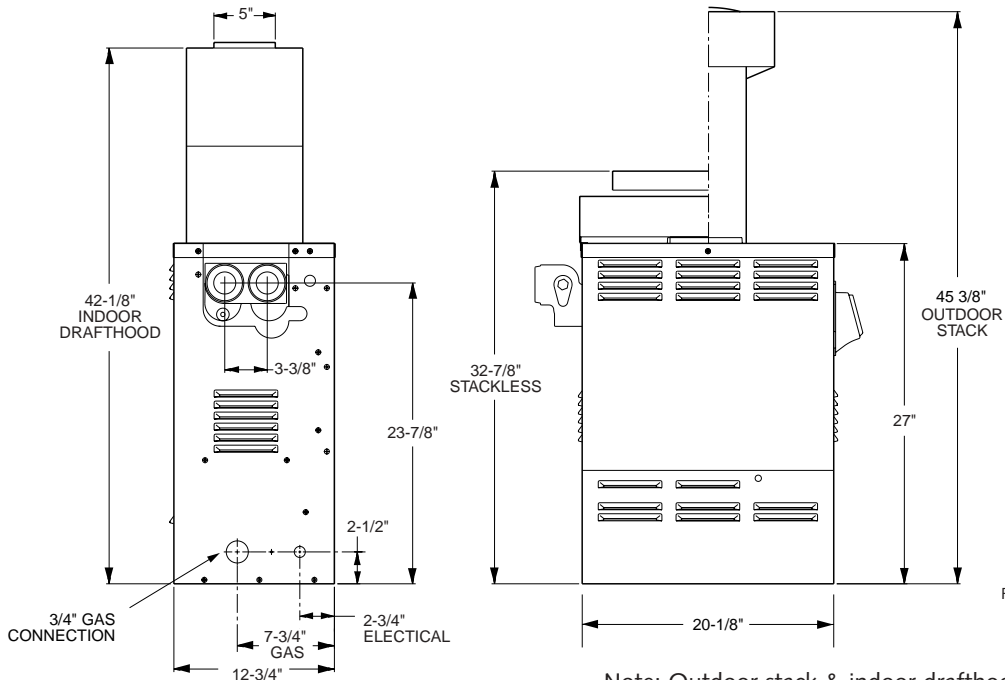


Fig # 9296

Note: Outdoor stack & indoor drafthoods can be supplied but must be ordered separately.

Specifications				
Model	BTUH Input (000)	Water Connections	Casting	Shipping Weight (lbs.) Heater w/Stackless Top
C-105	105	1-1/2"	Glass-lined cast iron	113
B-105	105	1-1/2" & 2"	Bronze	113

## Heating Capacity

The table below shows the heating capacity of the VERSA 155 in temperature rise per hour for a given pool size. For example, the heater will raise the temperature of a 400-square-foot pool 1 °F per hour.

Above-Ground Pool Size (Square Feet)			
	300	400	500
Temp. rise per hour	1-1/4 °F	1 °F	3/4 °F

## Patented Econotherm Heat Exchanger

Your VERSA is equipped with a unique all-copper-fin-tube heat exchanger, designed for efficient heat transfer, and built to provide years of trouble-free performance. Both header castings are made of porcelainized cast iron for durability and resistance to corrosion. Your VERSA is also available with optional bronze headers for completely rust-free operation.

**Two-Year Limited Warranty** against defects in materials and workmanship (see warranty for details). In addition, every VERSA is thoroughly tested in simulated conditions before shipment.



### Raypak, Inc.

2151 Eastman Ave, Oxnard, CA 93030 • (805) 278-5300 • Fax (800) 872-9725

### Raypak Canada Limited

2805 Slough Street, Mississauga, Ontario, Canada L4T 1G2 • (905) 677-7999 • Fax (905) 677-8036

[www.raypak.com](http://www.raypak.com)