

Job: _____

Engineer: _____

Contractor: _____

Prepared By: _____ Date: _____

Model: _____ Indoor/Outdoor: _____ MBTUH Input: _____

Hi Delta[®] - Type P

Commercial Pool Heaters Models 1532B-2342B

Sealed Combustion Chamber

100% Factory Fire Tested

Efficiency: 85%

Minimum Non-condensing Inlet Temperature: 105°F

Thermal Shock Proof Heat Exchanger

Limited Twenty-year Thermal Shock Warranty

Limited Five-year Heat Exchanger Warranty

Full Safety Diagnostics with Fault History

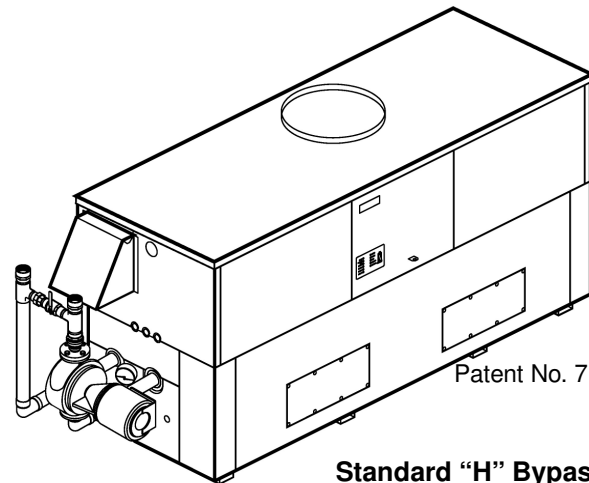
PolyTuf Powder Coated Cabinet

No Combustible Floor Shield Required

Fan-assisted

Non-ferrous Bypass

Patented Burner Security Blanket



Patent No. 7,044,124

Standard "H" Bypass Shown



Proudly Assembled in the USA

Heat Exchanger

- Brass Headers
- ASME Inspected and Stamped
160 PSIG Working Pressure
- National Board Approved
- Cupro-Nickel Finned Tubing
- ASME Steel Tube Sheet
- Silicone High-Temp O-Rings
- 125 PSIG ASME Pressure Relief Valve
- Temperature and Pressure Gauge
- Water Connections
 - Left – Standard
 - Right – Option A-6
- Bronze Pump, 120V, 60Hz
- Non-ferrous Pool Bypass

Controls

- 120V, 60Hz, 1Ø Power Supply
- 120/24V 60Hz Transformer
- 100% Shut-off/Lockout
- Hot Surface Ignition Systems (2)
- Remote Flame Sensors (2)
- High Limit Control, Auto Reset
- On/Off Power Switch
- Manual Shut-off, Front-mounted
- Flow Switch
- Blocked Vent Pressure Switch
- Combustion Air Proving Switches
- Economaster Pump Time Delay
- Poolstat
- Diagnostic Panel with LCD Display
2 Lines, 20 Characters

Gas Train

- Combination Valves
- On/Off Firing
- Low Gas Pressure Switch, Manual
- Fuel
 - Natural Gas (Only on 2002B)
 - Propane Gas
- Design Certified ANSI Z21.56/
CSA 4.7

Burner

- Ultra-low NOX:
Less than 20 PPM

Construction

- Indoor/Outdoor Construction
- Enclosed Front Controls
- CSA Low Lead Certified ≤ .25% Lead

Venting

- Vent Location
 - Top – Standard
 - Rear – Option D-14
- Vent Termination Cap
 - Outdoor – Option D-11
 - Indoor, Horizontal –
Option D-15
 - Indoor, Vertical (by others)
- Combustion Air
 - In-Line Filter Kit (TruSeal
only) – Option D-17
 - Air Intake Elbow –
Option D-16

Options

- B-26 2-Stage Digital
- B-21 4-Stage Digital
- B-__ TempTracker Mod+ (Up to 16
Boilers)

Options

- C-6 Ignition Module, Manual Reset
- D-21 TruSeal[®] Direct Vent
 - Right Side
 - Left Side (Model 1802B
Only)
- F-10 Low Water Cut-off, Remote
Probe
- P-__ Cold Water Run System
(See Page 3)
- S-2 Dual High Gas Pressure
Switches, Manual Reset
- X-1 SureRack[®] Kit*
- X-2 SureRack Kit Above Grade
Add-on (used with X-1)*

Regulatory Agency Requirements

- G-1 CSD-1

*Lower unit requires manifold modification



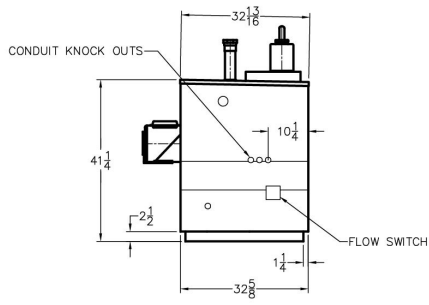
Raypak[®]

A Rheem Company

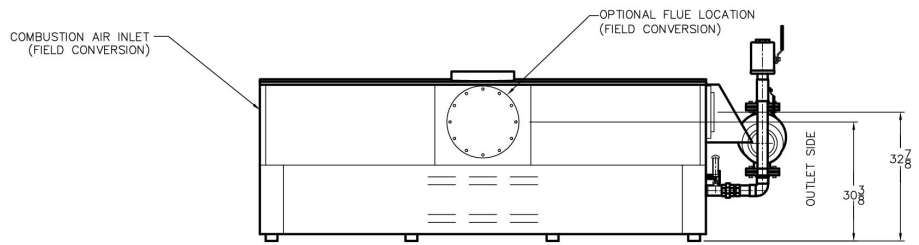
Hi Delta – Type P

Models 1532B-2342B (H-Bypass Option)

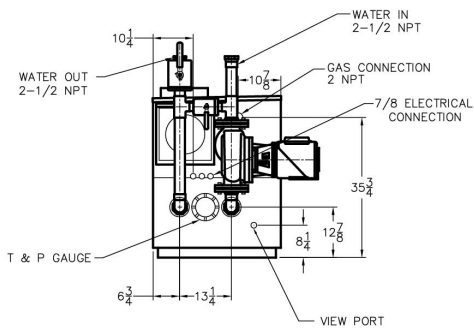
Model _____



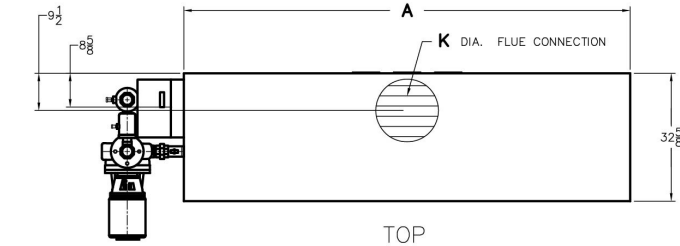
RIGHT



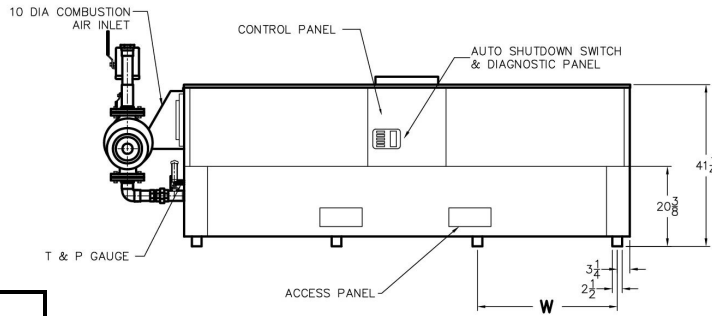
BACK ROTATED 180°



LEFT



TOP



FRONT

Model	Max. Flow		
	GPM	ΔP (ft)	ΔT
P 1532B	132	16.5	20
P 1802B	132	18.3	23
P 2002B	132	19.0	26
P 2072B	132	19.0	27
P 2342B	132	21.4	30

Model	MBTUH		A Width	K	W	Amp Draw		Pump HP	Shipping Weight (Lbs.)
	Input	Output				Heater	Pump		
P 1532B	1530	1301	79-7/8	12	24-3/8	<12	11	3/4	1225
P 1802B	1800	1530	91-1/8	14	28-1/8	<12	11	3/4	1350
P 2002B	1999	1699	102-1/2	14	31-15/16	<12	14**	1	1450
P 2072B	2070	1760	102-1/2	14	31-15/16	<12	14**	1	1450
P 2342B	2340	1989	113-7/8	16	35-11/16	<12	21**	1-1/2	1520

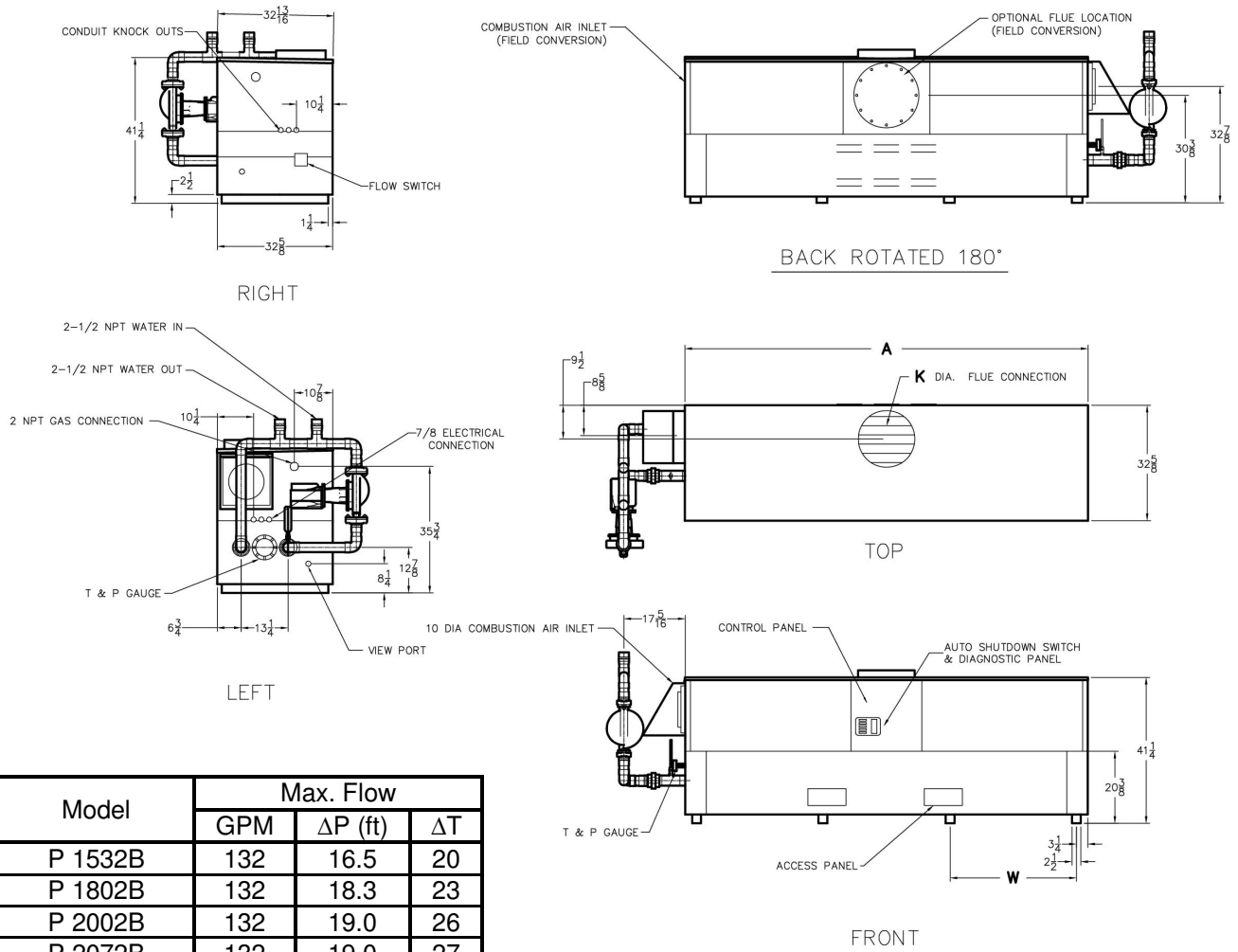
Dimensions are in inches.
 Ratings shown are for elevations up to 4,500 feet and for natural or propane gas.
 For installation at elevations over 4,500 feet, please contact manufacturer.

** Requires separate circuit breaker

Hi Delta – Type P

Models 1532B-2342B (Cold Water Run Option)

Model _____



Model	Max. Flow		
	GPM	ΔP (ft)	ΔT
P 1532B	132	16.5	20
P 1802B	132	18.3	23
P 2002B	132	19.0	26
P 2072B	132	19.0	27
P 2342B	132	21.4	30

Model	MBTUH		A Width	K	W	Amp Draw		Pump HP	Injector Pump HP	Shipping Weight (Lbs.)
	Input	Output				Heater	Pump			
P 1532B	1530	1301	79-7/8	12	24-3/8	<12	12	3/4	1/3	1225
P 1802B	1800	1530	91-1/8	14	28-1/8	<12	12	3/4	1/3 *	1460
P 2002B	1999	1699	102-1/2	14	31-15/16	<12	14	1**	3/4 *	1560
P 2072B	2070	1760	102-1/2	14	31-15/16	<12	14	1**	3/4 *	1560
P 2342B	2340	1989	113-7/8	16	35-11/16	<12	21	1**	3/4 *	1620

Dimensions are in inches.
 Ratings shown are for elevations up to 4,500 feet and for natural or propane gas.
 For installation at elevations over 4,500 feet, please contact manufacturer.

*Separate 120 VAC or 240 VAC 1Ø power required for Cold Water Run option
 ** Requires separate circuit breaker

