

POOL
MODELS: 50Hz HEAT PUMP

CATALOG NO. EU9100.75
Effective: 05-01-16
Replaces: 06-15-15

ILLUSTRATED PARTS LIST

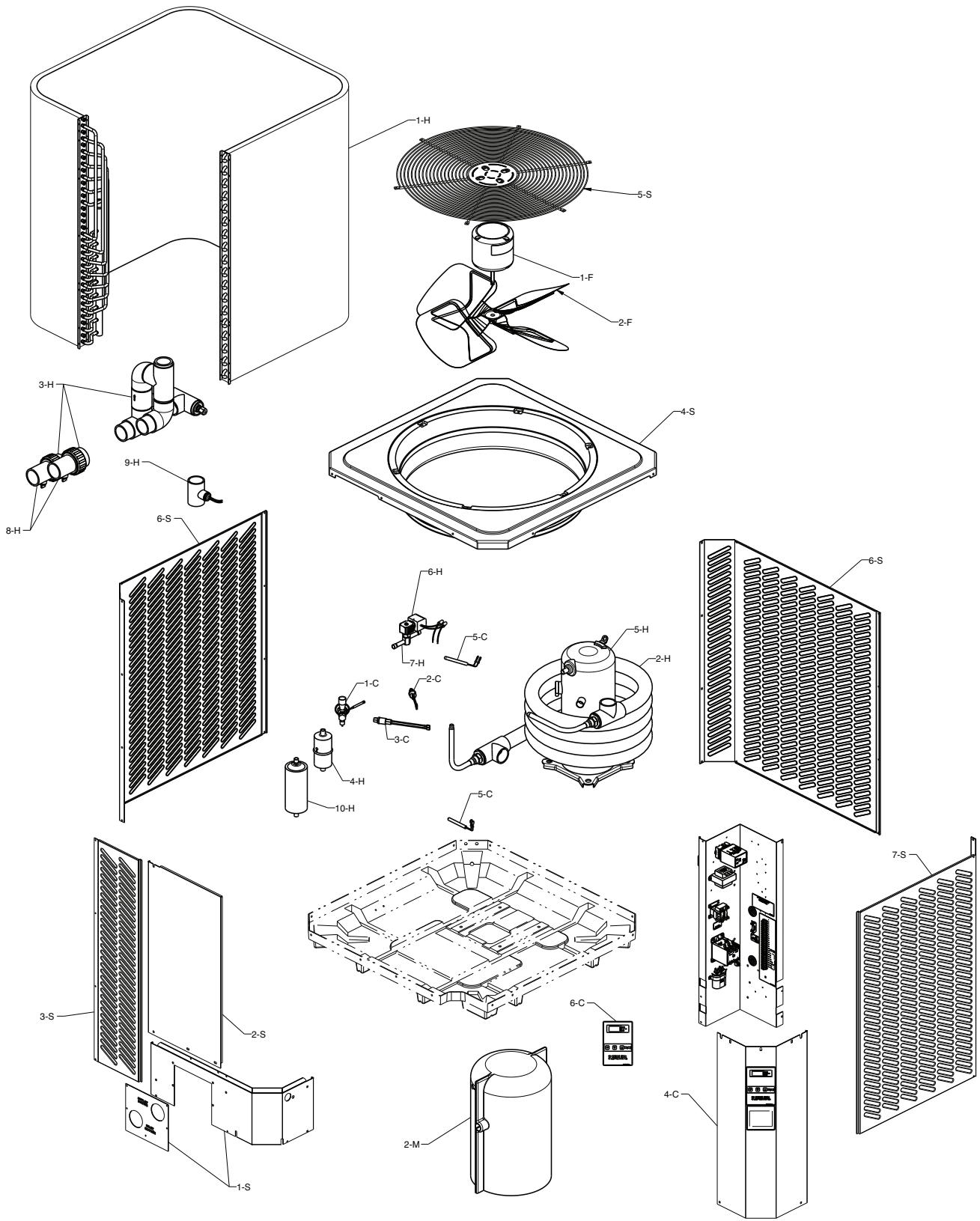
MODEL SIZE: 535X, 635X & 835X

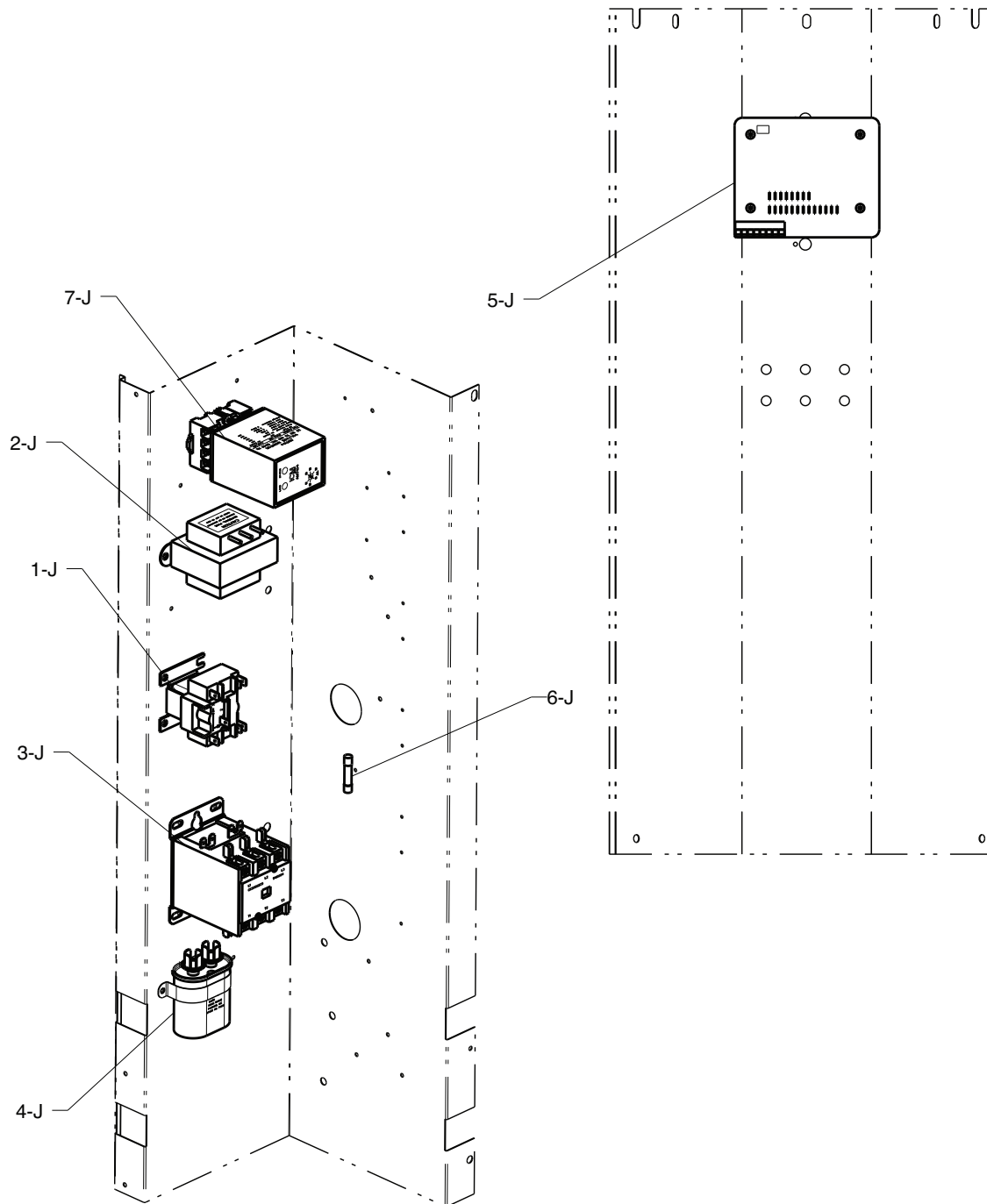
MODEL TYPE: HEAT PUMP POOL HEATER (R-410A REFRIGERANT)

DATES OF MANUFACTURE: 12-15-10 THRU CURRENT

THE PARTS LISTED ARE FOR STANDARD EQUIPMENT FOR THIS MODEL TYPE. MANUFACTURER RESERVES THE RIGHT TO SUBSTITUTE, DELETE OR CHANGE ANY PART WITHOUT NOTIFICATION. THE ADDITION OF OPTIONS MAY ALSO CHANGE SOME OF THE PARTS. ORDER REPLACEMENT PARTS FROM ACTUAL HEATER COMPONENTS.







CALLOUT	DESCRIPTION	POLLET		
		P535X	P635X	P835X
CONTROLS				
1-C	TX Valve	H000076	H000173	H000173
2-C	Low Pressure Switch	H000078	H000078	H000078
3-C	High Pressure Switch	H000079	H000079	H000079
4-C	Control Cover Digital (Includes 6-C)			
	Black	H000143	H000143	H000143
	Cool Dark Gray	H000227	H000227	H000227
6-C	Control Label	H000330	H000330	H000330
5-C	Temperature Sensor	H000002	H000002	H000002
HEAT TRANSFER				
1-H	Evaporator Coil	H000016	H000018	H000018
2-H	Heat Exchanger	H000022	H000022	H000024
3-H	Bypass Assembly	H000144	H000144	H000144
8-H	PVC Union	N/A	N/A	N/A
	PVC Union with Built-In Drain	H000319	H000319	H000319
4-H	Liquid Line Drier	H000011	H000011	H000011
5-H	Compressor			
	220/240V 1PH - X356 Models	H000174	H000177	
	200/220V 3PH - X357 Models	H000176	H000171	H000110
	380/420V 3PH - X358 Models	H000175	H000178	H000109
6-H	Solenoid Coil	H000107	H000107	H000107
7-H	Solenoid Valve	H000108	H000108	H000108
10-H	Flow Switch	H000166	H000166	H000166
9-H	Receiver	H000246	H000246	H000246
FAN				
1-F	Fan Motor			
	1065 RPM	H000084	H000084	H000084
	825 RPM	H000296	H000296	H000296
2-F	Fan Blade (4-Blade)	H000297	H000297	H000297
	Fan Blade (3-Blade) (Not Shown)	H000181	H000181	H000181
CONTROL BOX				
1-J	Fan Relay	H000017	H000017	H000017
2-J	Transformer	H000021	H000021	H000021
3-J	Contactors			
	1 Phase	H000043	H000043	
	3 Phase	H000114	H000114	H000114
4-J	Capacitor			
	1 Phase			
	(Units manufactured prior to 3/15/14)	H000295	H000080	
	(Units manufactured From 3/15/14)	H000154	H000041	
	3 Phase			
	(Units manufactured prior to 3/15/14)	H000117	H000117	H000117
	(Units manufactured From 3/15/14)	H000063	H000063	H000063
5-J	Control Board	H000029	H000029	H000029
6-J	Fuse	H000001	H000001	H000001
7-J	3 PH Monitor	H000111	H000111	H000111
MISCELLANEOUS				
1-M	Touch-up Paint			
	Black	750252	750252	750252
	Cool Dark Gray	750256	750256	750256
2-M	Compressor Sound Cover	H000316	H000316	H000316
SHEET METAL				
1-S	Electrical Input Panel			
	Black	H000155	H000156	H000156
	Cool Dark Gray	H000220	H000221	H000221
2-S	Access Panel			
	Black	H000157	H000157	H000157
	Cool Dark Gray	H000210	H000210	H000210
3-S	Jacket Side Front			
	Black	H000158	H000159	H000159
	Cool Dark Gray	H000239	H000240	H000240
4-S	Jacket Top			
	Black	H000160	H000160	H000160
	Cool Dark Gray	H000212	H000212	H000212
5-S	Grille Fan Guard	H000180	H000180	H000180
6-S	Jacket Side Left & Rear			
	Black	H000161	H000162	H000162
	Cool Dark Gray	H000242	H000243	H000243
7-S	Jacket Side Right			
	Black	H000163	H000164	H000164
	Cool Dark Gray	H000244	H000245	H000245