

RAYPAK SERVICE INSTRUCTIONS

PROTÉGÉ CARTRIDGE FILTER SERIES RPCFP

KIT 018245F, CARTRIDGE FILTER COVER

IMPORTANT NOTICE: These instructions are for the use of qualified individuals specially trained and experienced in the installation and maintenance of this type of equipment and related system components. Installation and service personnel are required by some states to be licensed. Persons not qualified shall not attempt to install, service, or maintain this equipment.

DANGER – SHOCK HAZARD: Make sure electrical power to pump and heaters is disconnected to avoid damage to components, potential serious personal injury or death.

WARNING: Make sure water & power have been turned OFF before making any repairs or service to the unit.

Scope

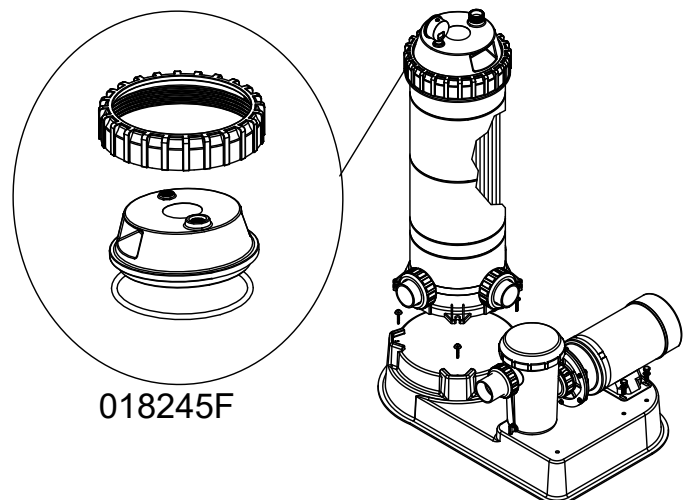
This kit provides the parts required to replace the Lid assembly used on the Protégé Cartridge Filter Pumps.

Kit Parts

Kit	Parts Included
018245F	Lock Ring, Lid, Lid, O-ring

Recommended Materials

- Any quality generic brand of appropriate lubricant for application onto O-rings and threads of plastic parts such as "Water Lube".



Replacing Parts

1. Turn off the electrical power at the Pump's power switch and/or unplug it at the receptacle.
2. Allow the pump motor to cool down before servicing the unit.
3. Close the water valves, if installed, to isolate the filter from the system.
4. Open the air relief port on the top of the lid to relieve pressure in the tank.



Figure 1. Pressure Release Valve

5. Unscrew the black locking ring by turning clockwise until free, and remove.



Figure 2. Lock Ring Removed

NOTE: if negative pressure inside persists, it may be necessary to drain the tank in order to remove the lid.

6. Lift the lid and separate it from the tank. The lid may be snug in which case a slight rocking motion may be helpful.



Figure 3. Lid Removed

7. Remove the new O-ring from the packaging. Apply a thin coating of appropriate lubricant to the entire surface of the O-ring, and install it in the outer slot of the replacement lid.



Figure 4. O-Ring Positioned

8. Place the lid on top of the tank and press down gently until seated. The center portion of the lid should seat inside the opening on the cartridge, and the lid O-ring should seat firmly inside the top of the tank. The lid should be seated equally and completely all the way around.
9. Replace the locking ring and secure by turning clockwise. Properly installed, the threaded portion of the tank should not be visible.
10. Open water valves, if installed, and make sure the pump is filled with water.
11. Reconnect the electrical and turn on power to the pump.
12. Restart the circulation pump and bleed the air from the tank through the air relief port. When water exits the port, close it. Check for leaks at the edge of the lid.