

RAYPAK SERVICE INSTRUCTIONS

PROTÉGÉ SERIES VARIABLE-SPEED PUMP (VSP) MODEL RPVSP

KIT 018228F, TRANSPARENT COVER

KIT 018229F, PUMP BASKET

IMPORTANT NOTICE: These instructions are for the use of qualified individuals specially trained and experienced in the installation and maintenance of this type of equipment and related system components. Installation and service personnel are required by some states to be licensed. Persons not qualified shall not attempt to install, service, or maintain this equipment.

DANGER – SHOCK HAZARD: Make sure electrical power to pump and heaters is disconnected to avoid damage to components, potential serious personal injury or death.

WARNING: Make sure water & power have been turned OFF before making any repairs or service to the unit.

Scope

Kits provide the parts required to replace the Transparent Cover and Basket for the Protégé Variable-Speed Pump model RPVSP1.

Kit 018229F Parts

Components
Basket

Kit 018228F Parts

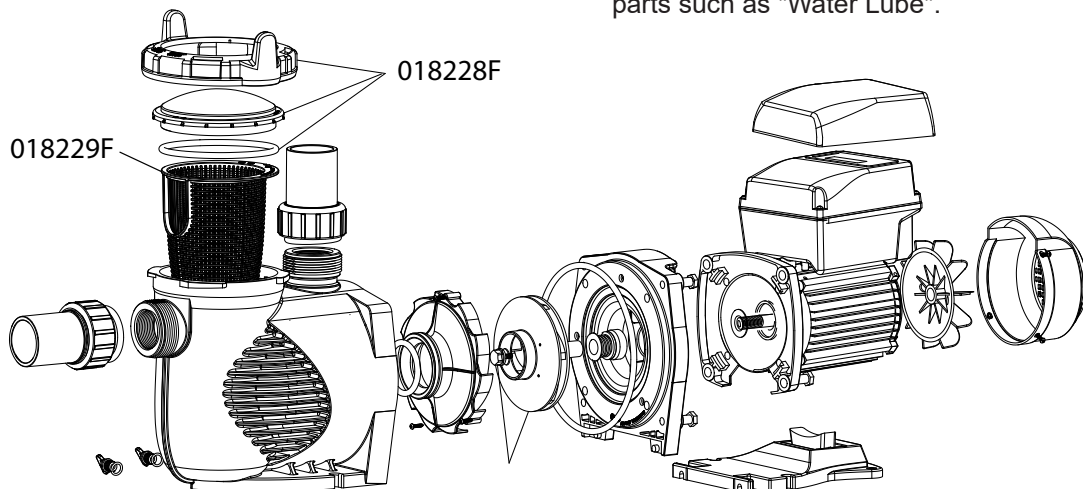
	Components
Transparent Cover Assembly	Lock Ring
	Clear Lid
	O-Ring

Required Tools

- None

Recommended Materials

- Any quality generic brand of appropriate lubricant for application onto O-rings and threads of plastic parts such as "Water Lube".



Replacing Lock Ring, Clear Lid, and O-Ring

1. Turn off the electrical power at the Pump's power switch and/or unplug it.
2. Allow the pump motor to cool down before servicing the unit.
3. Close the water valves, if installed, to isolate the pump from the system.
4. Remove the old lid assembly by grasping the upturned handles, turning the locking ring counter clockwise and lifting clear as shown in **Figure 1**. Set it aside as shown in **Figure 2**. The pump basket/strainer may now be removed for cleaning or replacement by grasping and lifting straight up (see **Figure 3**). IF YOU ARE ONLY REPLACING THE BASKET, SKIP TO STEP 7.



Figure 1. Lock Ring Removal - Rotational Direction



Figure 2. Parts Separation

5. Apply a small amount of appropriate lubricant evenly over the entirety of the NEW lid O-ring. Install the O-ring around the inner edge of the NEW transparent lid.



Figure 3. Lint Basket Removal



Figure 4. Lint Basket Guide Keys

6. Slide the lid into the NEW locking ring between the notches with the convex side up, toward the handles. Apply pressure to the bottom of the lid until it clicks into place on the locking ring. See **Figure 5**.



Figure 5. O-Ring Mounted

7. Install the pump lid assembly by aligning the locking ring notches with those on the pump so that the lid drops into place. Grasping the upturned handles, turn clockwise until snug. When fitted, the handles should be at 3 o'clock and 9 o'clock positions, with the O-ring creating a seal between the lid and the pump.
8. Open water valves if installed, and make sure the pump is filled with water before attempting to start. The lid should be water tight.
9. Reapply power to the pump..