

Job: \_\_\_\_\_

Engineer: \_\_\_\_\_

Contractor: \_\_\_\_\_

Prepared By: \_\_\_\_\_ Date: \_\_\_\_\_

Model: \_\_\_\_\_ Indoor/Outdoor: \_\_\_\_\_ MBTUH Input: \_\_\_\_\_

# Hi Delta<sup>®</sup> - Type P

Commercial Pool Heaters  
Models 502B-902B

## Sealed Combustion Chamber

100% Factory Fire Tested

Efficiency: 85%

Minimum Non-condensing Inlet Temperature: 105°F

Thermal Shock Proof Heat Exchanger

Limited Twenty-year Thermal Shock Warranty

Limited Five-year Heat Exchanger Warranty

Full Safety Diagnostics with Fault History

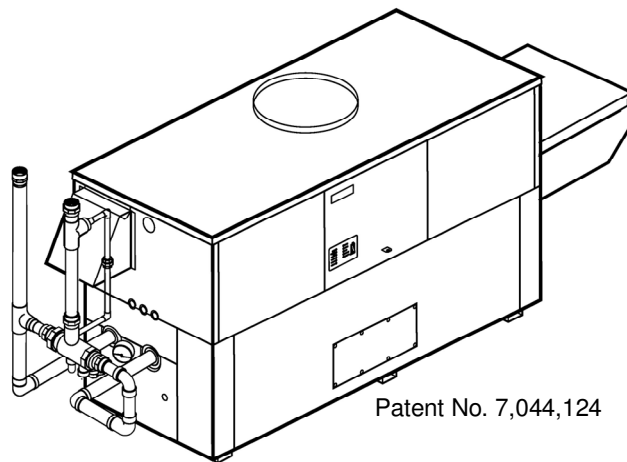
PolyTuf Powder Coated Cabinet

No Combustible Floor Shield Required

Fan-assisted

Non-ferrous Bypass

Patented Burner Security Blanket



Patent No. 7,044,124

Standard "Sparcomatic" Bypass Shown



Proudly Assembled in the USA

## Heat Exchanger

- Brass Headers
- ASME Inspected and Stamped  
160 PSIG Working Pressure
- National Board Approved
- Cupro-Nickel Finned Tubing
- ASME Steel Tube Sheet
- Silicone High-Temp O-Rings
- 125 PSIG ASME Pressure Relief Valve
- Temperature and Pressure Gauge
- Water Connections
  - Left – Standard
  - Right – Option A-6
- Bronze Pump, 1/2 HP, 120V, 60Hz
- Non-ferrous Pool Bypass Assembly with Automatic Control

## Controls

- 120V, 60Hz, 1 ∅ Power Supply
- 120/24V 60Hz Transformer
- 100% Pilot Shutoff/Lockout
- Hot Surface Ignition
- Remote Flame Sensor
- High Limit Control, Manual Reset
- On/Off Power Switch
- Thermostat Override Switch
- Manual Shut-off, Front-mounted
- Flow Switch
- Blocked Vent Pressure Switch
- Combustion Air Proving Switch
- Economaster Pump Time Delay
- Poolstat
- Diagnostics Panel with LCD Display,  
2 Lines, 20 Characters

## Gas Train

- Combination Valves
- On/Off Firing
- Fuel
  - Natural Gas
  - Propane Gas
- Design Certified ANZI Z21.56/  
CSA 4.7

## Burner

- Ultra-low NOx:  
Less than 20 PPM

## Construction

- Indoor/Outdoor Construction
- Enclosed Front Controls
- PolyTuf Powder Coat Finish
- CSA Low Lead Certified ≤ .25%  
Lead

## Venting

- Vent Location
  - Top – Standard
  - Rear – Option D-14
- Vent Termination Cap
  - Outdoor – Option D-11
  - Indoor, Horizontal –  
Option D-15
  - Indoor, Vertical (by others)
- Combustion Air
  - In-Line Filter Kit (TruSeal  
only) – Option D-17
  - Air Intake Elbow –  
Option D-16

## Multi-Heater Controllers

- B-26 2-Stage Digital
- B-21 4-Stage Digital
- B-\_\_ TempTracker Mod+ (Up to 16  
Boilers)

## Options

- C-6 Ignition Module, Manual Reset
- D-21 TruSeal<sup>®</sup> Direct Vent
  - Left Side - Standard
  - Right Side - Optional
- F-10 Low Water Cut-Off,  
Remote Probe
- P-\_\_ Cold Water Run System  
(See Page 3)
- S-1 Low Gas Pressure Switch,  
Manual Reset
- S-2 High Gas Pressure Switch,  
Manual Reset
- X-1 SureRack<sup>®</sup> Kit (Lower Unit  
Requires Manifold  
Modification)
- X-2 SureRack Add-On (Lower Unit  
Requires Manifold  
Modification)

## Regulatory Agency Requirements

- G-1 CSD-1

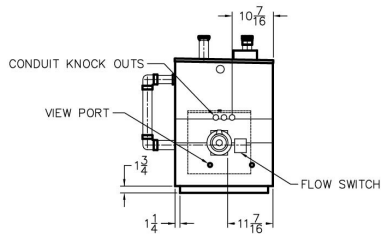


**Raypak<sup>®</sup>**  
A Rheem Company

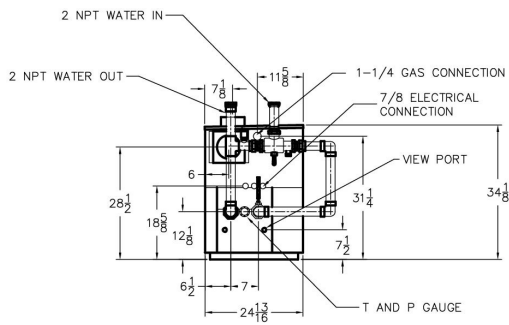
# Hi Delta – Type P

## Models 502B – 902B (“Sparcomatic” Bypass Option)

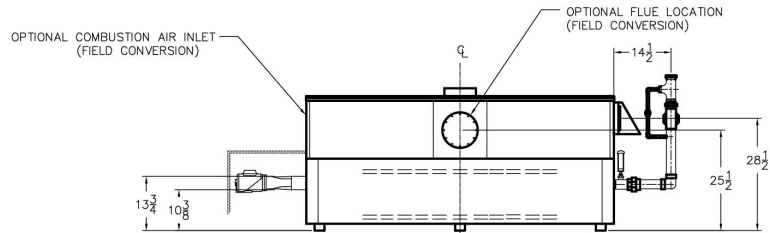
Model \_\_\_\_\_



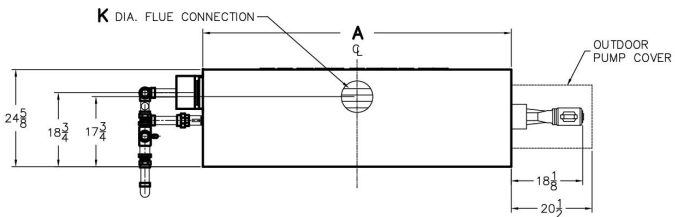
RIGHT SIDE



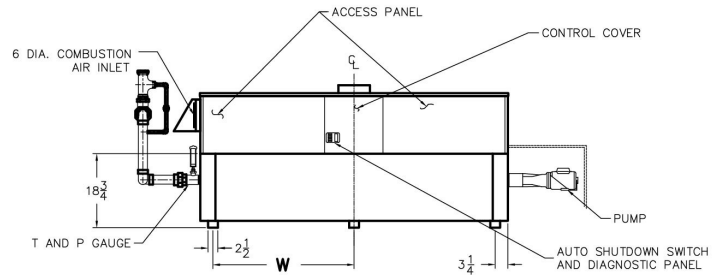
LEFT SIDE



BACK VIEW  
ROTATED 180°



TOP VIEW



FRONT VIEW

### RATE OF FLOW AND PRESSURE DROP

Model	Max. Flow		
	GPM	ΔP (ft)	ΔT
502B	90	10.5	10
652B	90	10.7	12
752B	90	11.0	14
902B	90	11.8	17

Model	MBTUH		A Width	K	W	Amp Draw (w/ Pump)	Shipping Weight (Lbs.)
	Input	Output					
502B	500	425	50	6	22	13	545
652B	650	553	60-1/2	8	27-1/4	13	590
752B	750	638	67-1/2	8	30-3/4	13	675
902B	900	765	78	8	36	14	740

Dimensions are in inches.

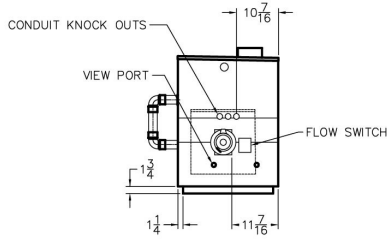
Ratings shown are for elevations up to 4,500 feet and for natural or propane gas.

For installation at elevations over 4,500 feet, please contact manufacturer.

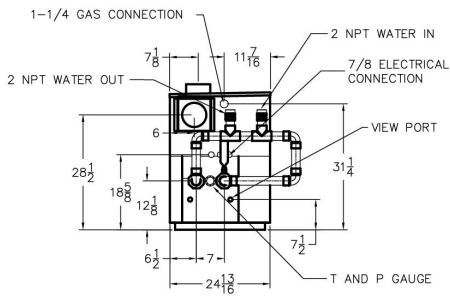
# Hi Delta – Type P

## Models 502B – 902B (Cold Water Run Option)

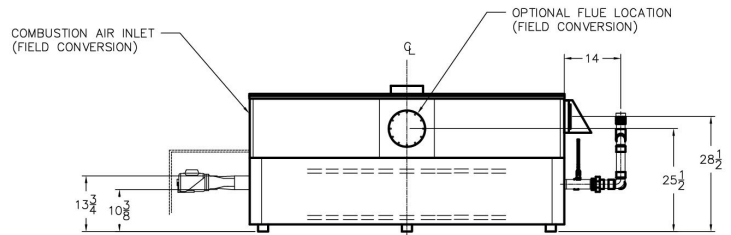
Model \_\_\_\_\_



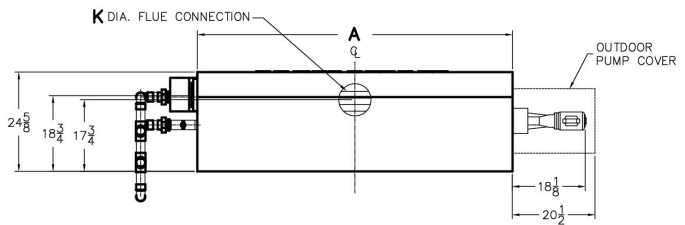
RIGHT SIDE



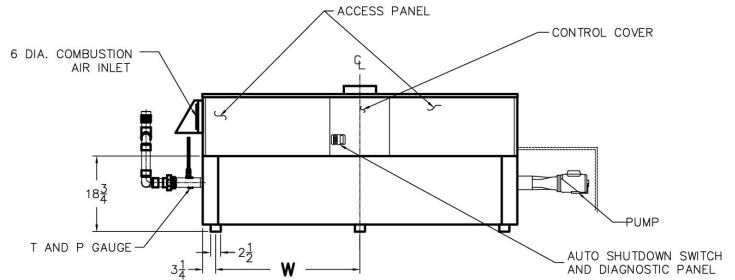
LEFT SIDE



BACK VIEW  
ROTATED 180°



TOP VIEW



FRONT VIEW

### RATE OF FLOW AND PRESSURE DROP

Model	Max. Flow		
	GPM	ΔP (ft)	ΔT
502B	90	10.5	10
652B	90	10.7	12
752B	90	11.0	14
902B	90	11.8	17

Model	MBTUH		A Width	K	W	Amp Draw Heater w/ Pump	Shipping Weight (Lbs.)
	Input	Output					
P 502B	500	425	50	6	22	13	655
P 652B	650	553	60-1/2	8	27-1/4	13	755
P 752B	750	638	67-1/2	8	30-3/4	13	815
P 902B	900	765	78	8	36	14	905

Dimensions are in inches.  
Ratings shown are for elevations up to 4,500 feet and for natural or propane gas.  
For installation at elevations over 4,500 feet, please contact manufacturer.

\* Separate 120 VAC or 240 VAC 1Ø power required for Cold Water Run Option.  
Injector pump ships loose for field installation at bypass inlet.

