

Job: _____

Engineer: _____

Contractor: _____

Prepared By: _____ Date: _____

Model: _____ Indoor/Outdoor: _____ MBTUH Input: _____

Hi Delta[®] - Type P

Commercial Pool Heaters
Models 302B & 402B

Sealed Combustion Chamber

100% Factory Fire Tested

Efficiency: 85%

Minimum Non-condensing Inlet Temperature: 105°F

Thermal Shock Proof Heat Exchanger

Limited Twenty-year Thermal Shock Warranty

Limited Five-year Heat Exchanger Warranty

Diagnostic Center with Fault History

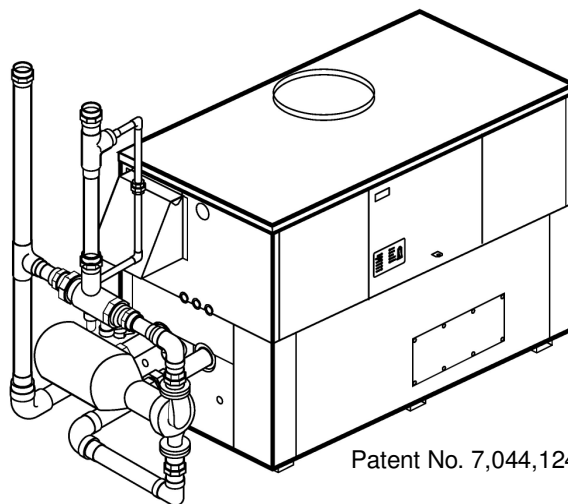
PolyTuf Powder Coated Cabinet

No Combustible Floor Shield Required

Fan-assisted

Non-ferrous Bypass

Patented Burner Security Blanket



Patent No. 7,044,124



Proudly Assembled in the USA

Standard "Sparcomatic" Bypass Shown

Heat Exchanger

- Brass Headers
- ASME Inspected and Stamped
- 160 PSIG Working Pressure
- National Board Approved
- Cupro-Nickel Finned Tubing
- ASME Steel Tube Sheet
- Silicone High-Temp O-Rings
- 125 PSIG ASME Pressure Relief Valve
- Temperature and Pressure Gauge
- Water Connections
 - Left – Standard
 - Right – Option A-6
- Bronze Pump, 1/3 HP, 120V, 60Hz
- Non-Ferrous Pool Bypass Assembly with Automatic Control

Controls

- 120V, 60Hz, 1Ø Power Supply
- 120/24V 60Hz Transformer
- 100% Shut-off/Lockout
- Hot Surface Ignition
- Remote Flame Sensor
- High Limit Control, Auto Reset
- On/Off Power Switch
- Manual Shut-off, Front-mounted
- Flow Switch
- Blocked Vent Pressure Switch
- Combustion Air Proving Switch
- Pump Time Delay
- Poolstat
- Diagnostic Panel with LCD Display
- 2 Lines, 20 Characters

Gas Train

- Combination Valve
- On/Off Firing
- Fuel
 - Natural Gas
 - Propane Gas
- Design Certified ANSI Z21.56/CSA 4.7

Burner

- Ultra-low NOx:
Less Than 20 PPM

Construction

- Indoor/Outdoor Construction
- Enclosed Front Controls
- CSA Low Lead Certified ≤ .25% Lead

Venting

- Vent Location
 - Top – Standard
 - Rear – Option D-14
- Vent Termination Cap
 - Outdoor – Option D-11
 - Indoor, Horizontal – Option D-15
 - Indoor, Vertical (by others)
- Combustion Air
 - In-Line Filter Kit (TruSeal only) – Option D-17
 - Air Intake Elbow – Option D-16

Multi-Heater Controllers

- B-26 2-Stage Digital
- B-21 4-Stage Digital
- B-__ TempTracker Mod+ (Up to 16 Boilers)

Options

- C-6 Ignition Module, Manual Reset
- D-21 TruSeal[®] Direct Vent
- F-10 Low Water Cut-Off, Remote Probe
- S-1 Low Gas Pressure Switch, Manual
- S-2 High Gas Pressure Switch, Manual
- X-1 SureRack[®] Kit (Lower Unit Requires Manifold Modification)
- X-2 SureRack Add-on (Lower Unit Requires Manifold Modification)
- _____

Regulatory Agency Requirements

- G-1 CSD-1



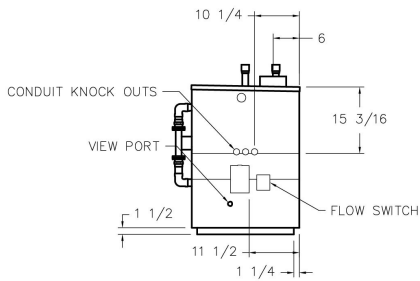
Raypak[®]

A Rheem Company

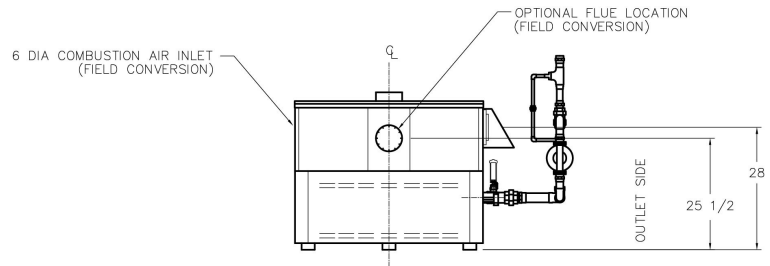
Hi Delta – Type P

Models 302B & 402B (“Sparcomatic” Bypass Option)

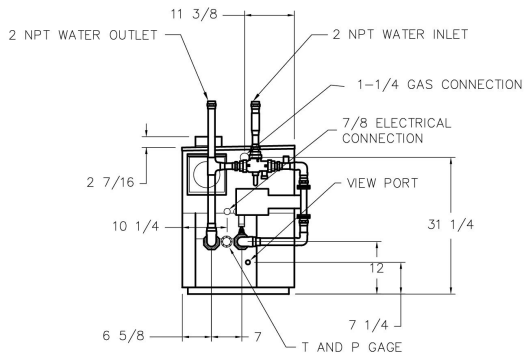
Model _____



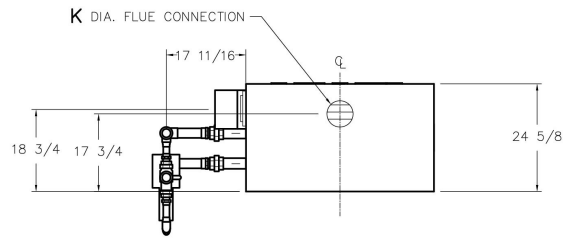
RIGHT SIDE



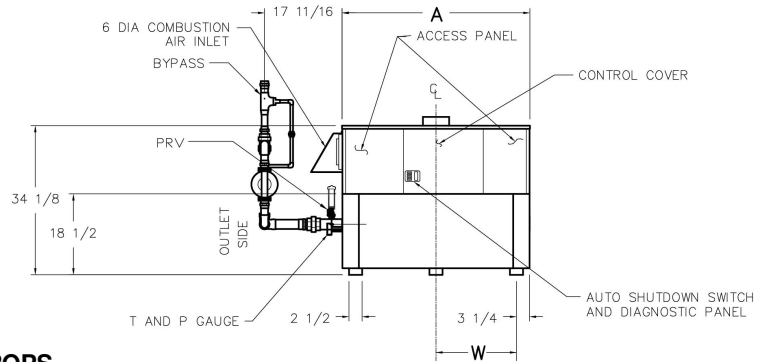
BACK VIEW
ROTATED 180°



LEFT SIDE



TOP VIEW



FRONT VIEW

RATES OF FLOW AND PRESSURE DROPS

Model	Max. Flow		
	GPM	ΔP (ft)	ΔT
302B	90	9.8	6
402B	90	10.0	8

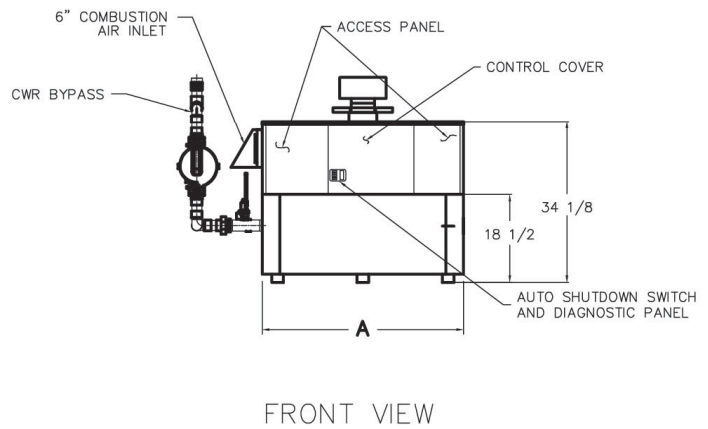
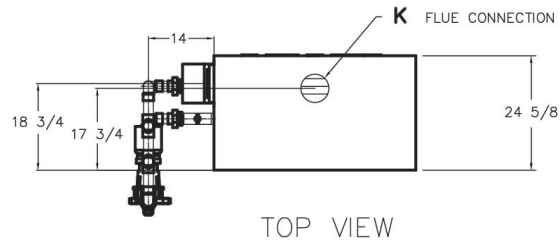
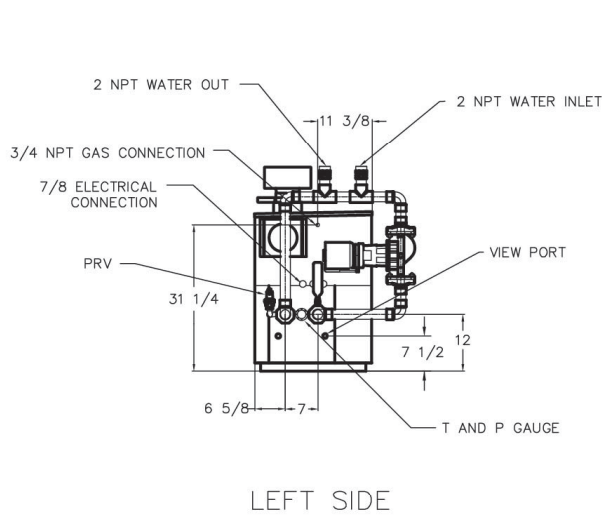
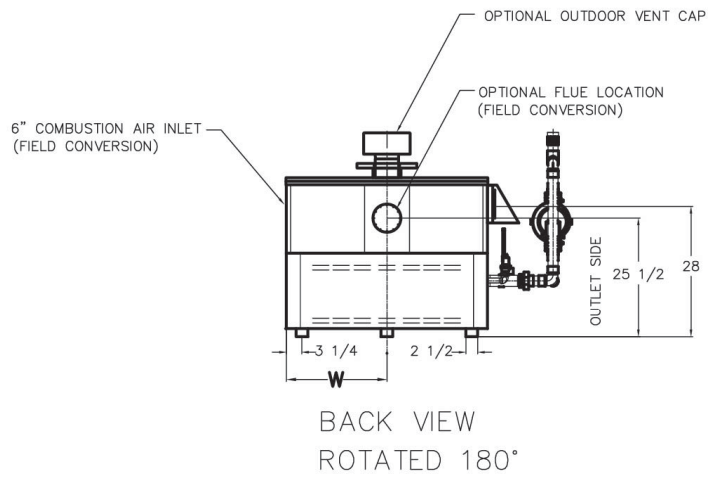
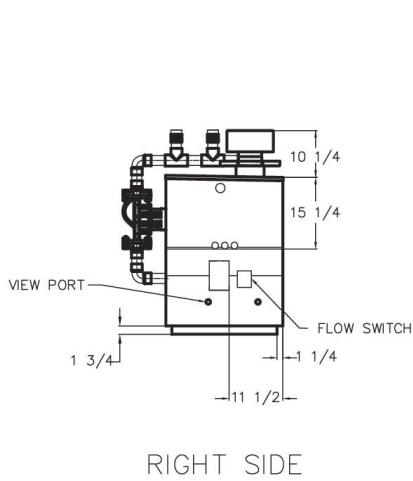
Model	MBTUH		A Width	K	W	Amp Draw (w/ Pump)	Operating Weight (Lbs.)
	Input	Output					
302B	300	255	36	5	14-3/4	< 12	425
402B	399	339	43	6	18-1/2	< 12	500

NOTES: Dimensions are in inches.
Ratings shown are for elevations up to 4,500 feet and for natural or propane gas.
For installation at elevations over 4,500 feet, please contact manufacturer.

Hi Delta – Type P

Models 302B & 402B (Cold Water Run Option)

Model _____



RATES OF FLOW AND PRESSURE DROPS

Model	Max. Flow		
	GPM	ΔP (ft)	ΔT
302B	90	9.8	6
402B	90	10.0	8

Model	MBTUH		A Width	K	W	Amp Draw (w/ Pump)	Shipping Weight (Lbs.)	Pump HP	Injector Pump HP
	Input	Output							
302B	300	255	36	5	18	< 12	425	1/2	1/4
402B	399	339	43	6	18-1/2	< 12	500	1/2	1/4

NOTES: Dimensions are in inches.
 Ratings shown are for elevations up to 4,500 feet and for natural or propane gas.
 For installation at elevations over 4,500 feet, please contact manufacturer.
 * Separate 120 VAC or 240 VAC 1Ø power required.
 Injector pump ships loose for field installation at bypass inlet.

