

# HVAC Design

at Your Fingertips



**Go from creation to printing  
in 5 minutes or less.**



*relax*  
It's Rheem®



**DESIGNSTAR**  
PROFESSIONAL



## HVAC System Design at Your Fingertips.

A web-based software tool that enables the HVAC Design Professional to specify, select and document all Rheem equipment for new construction or replacement HVAC projects in all commercial applications, or any project requiring a submittal package.

### Features:

- Easy-to-Use, Web-based software makes your job simpler
- Easy-to-Navigate Tabbed Menu walks you through each step
- 24/7 Access allows you to complete projects as your schedule allows
- Provides a complete, professional & customizable Submittal Package in minutes

### TAB: DASHBOARD

The screenshot displays the Rheem DesignStar Professional web application dashboard. The interface includes a navigation menu with tabs for Dashboard, Edit Project Profile, Manage Models, and Print Summary. The main content area is divided into sections for Project Status and Active Projects. The Project Status section lists options: Active (3), On Hold (0), Pending (0), and Complete (0). The Active Projects section contains a table with columns for Job Title, City, State, Date Created, and Date Modified, along with edit and delete buttons for each project.

Job Title	City, State	Date Created	Date Modified	Actions
McDonalds (2)	MIAMI, FL	Jan 7 2010	Jan 7 2010	[edit] [delete]
East High School (0)	DALLAS/FORT WORTH, TX	Jan 7 2010	Jan 7 2010	[edit] [delete]
Los Angeles Medical Plaza (0)	LOS ANGELES, CA	Jan 7 2010	Jan 7 2010	[edit] [delete]

- Project Status Tracking Options (Active, On-Hold, Pending and Completed) allow for easy project management within your password-protected account



## TAB: CREATE/EDIT PROJECT PROFILE

Dashboard Edit Project Profile Manage Models Print Summary

### Create / Edit Project

\* indicates required fields

▼ Job Information

\* indicates required fields

Project Name: Los Angeles Medical Plaza \* Required

Job Number: 1 \* Required

Date: 12/29/2009

State: CA \* Required

City: LOS ANGELES \* Required

Prepared By: John Smith

Project Status: Active

Notes:

- Active
- On Hold
- Pending
- Complete

► Customer Information

- General Contractor
- Mechanical Contractor
- Mechanical Engineer
- Architect

Save Cancel

- Space for Contact Information Entry gives you quick access to detailed contact information for all project team members
- Project Notes Section provides an area to record all miscellaneous notes within a saved project



*The LEED® (Leadership in Energy and Environment Design) Green Building Rating System is the nationally accepted benchmark for the design, construction and operation of high performance green buildings.*

# TAB: MANAGE MODELS



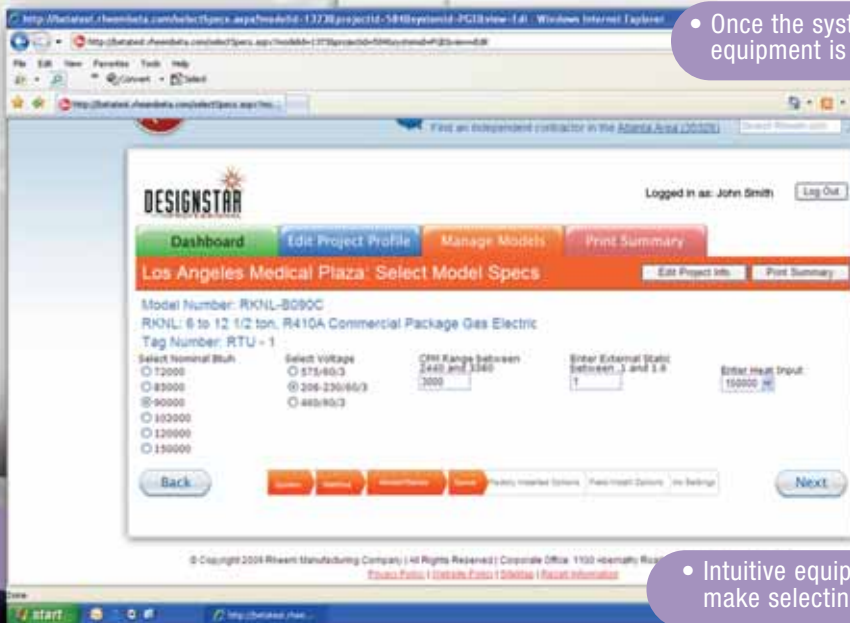
• Choose from 3 different Equipment Selection Methods – saving you time by removing the constraint of typical selection software



• Provides the ability to meet an unlimited amount of project applications with the option to select from all Rheem residential and commercial equipment

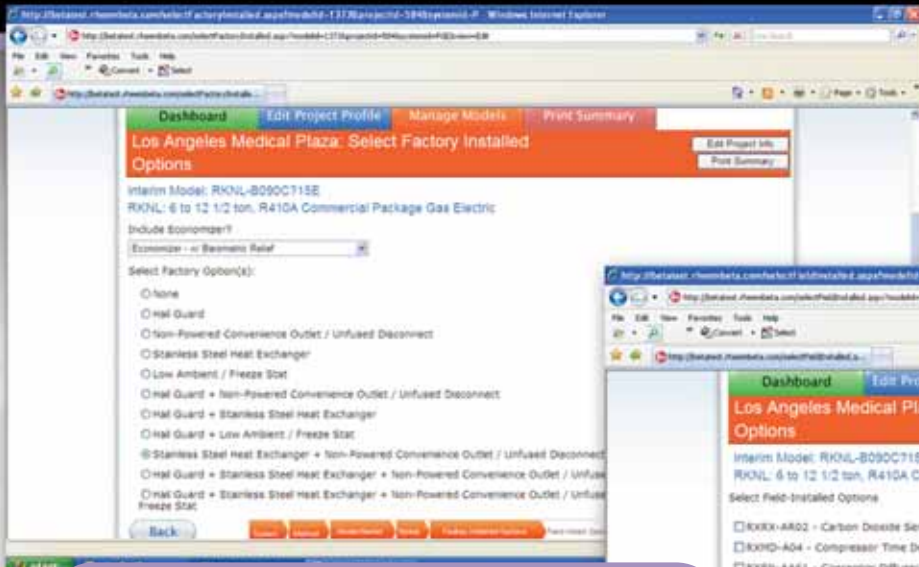


• Once the system category is chosen, all eligible equipment is displayed for easy selection

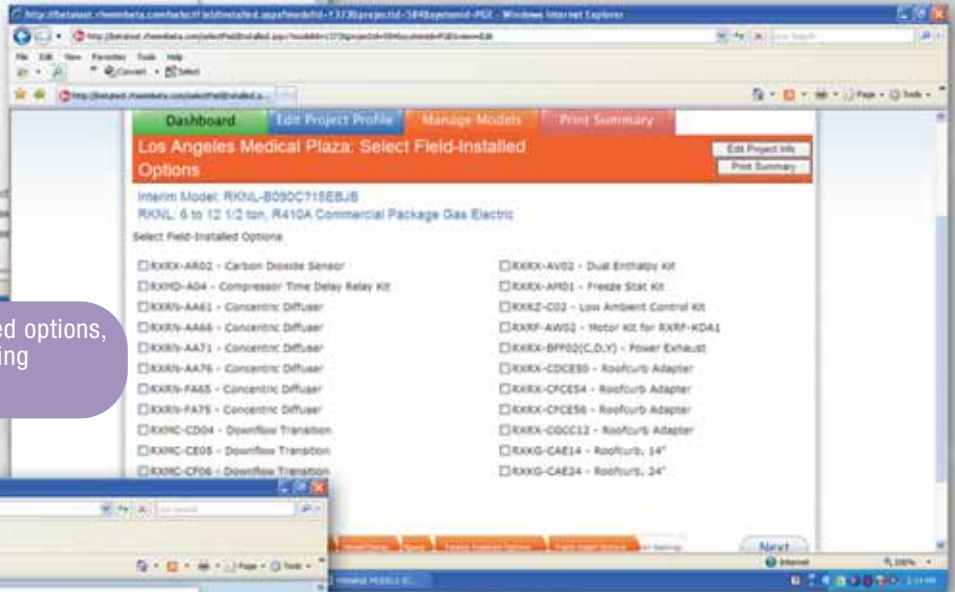


• Intuitive equipment specification listings make selecting a base model simple and fast

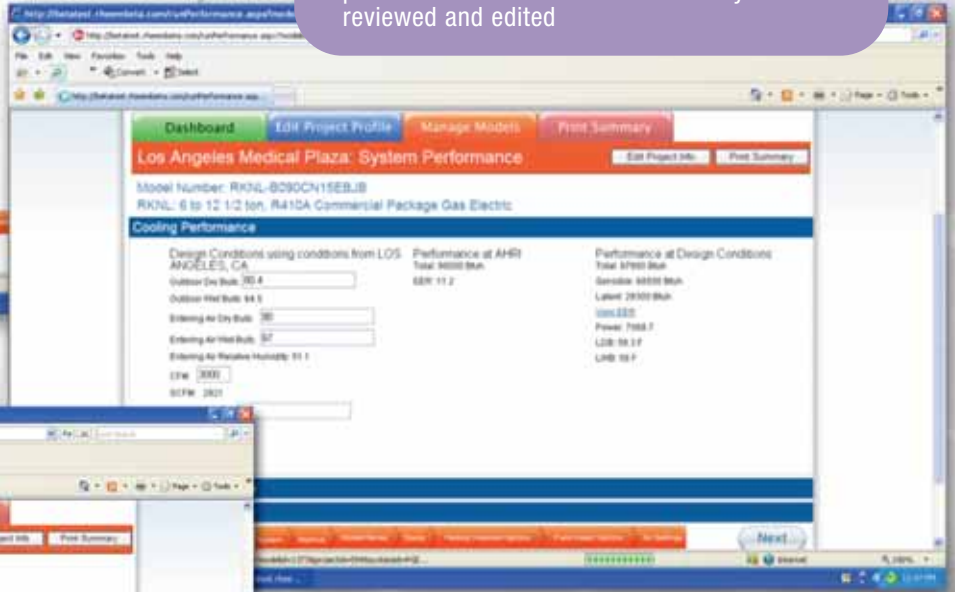




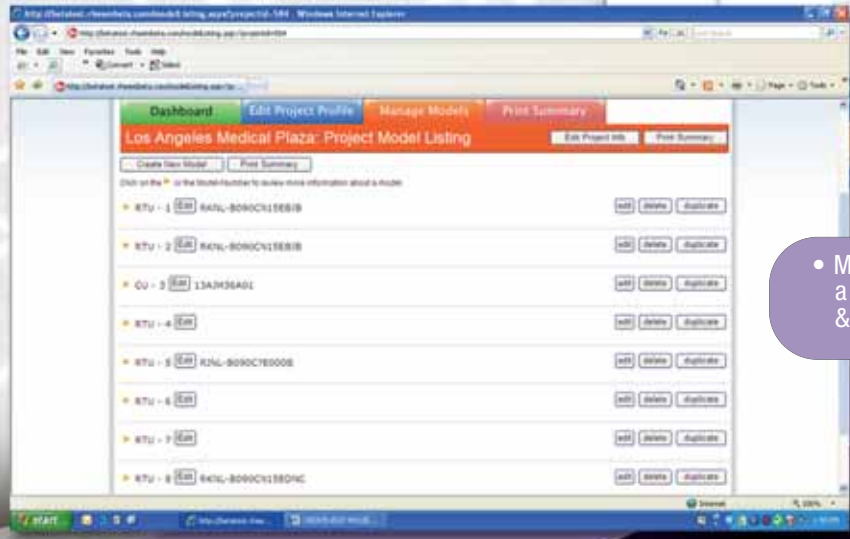
- Menu-driven, factory-installed and field-installed options, eliminate the need for hard copy, time-consuming specification sheet review



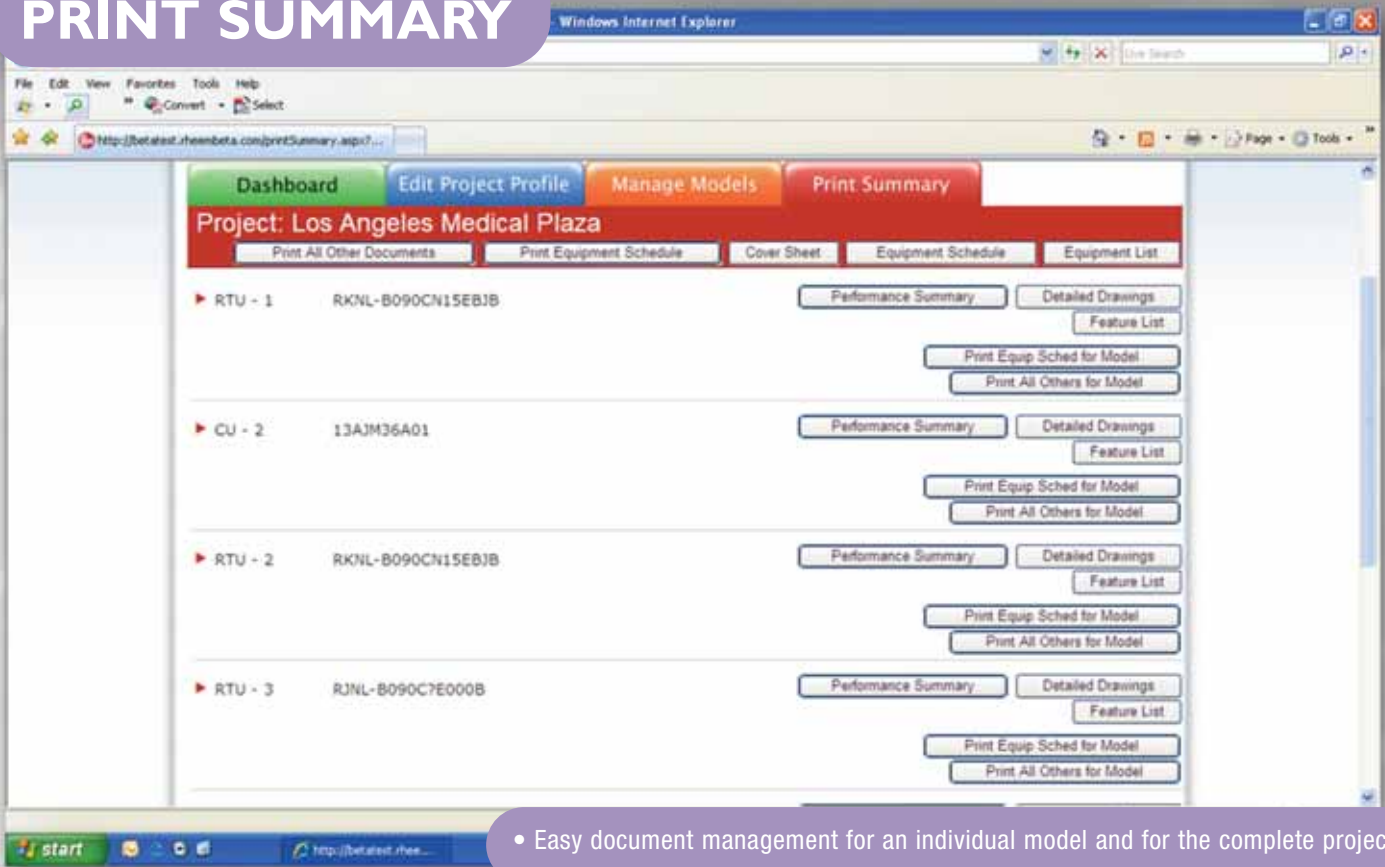
- Specifying entering air conditions, along with local temperature information, produces accurate performance data which can be easily reviewed and edited



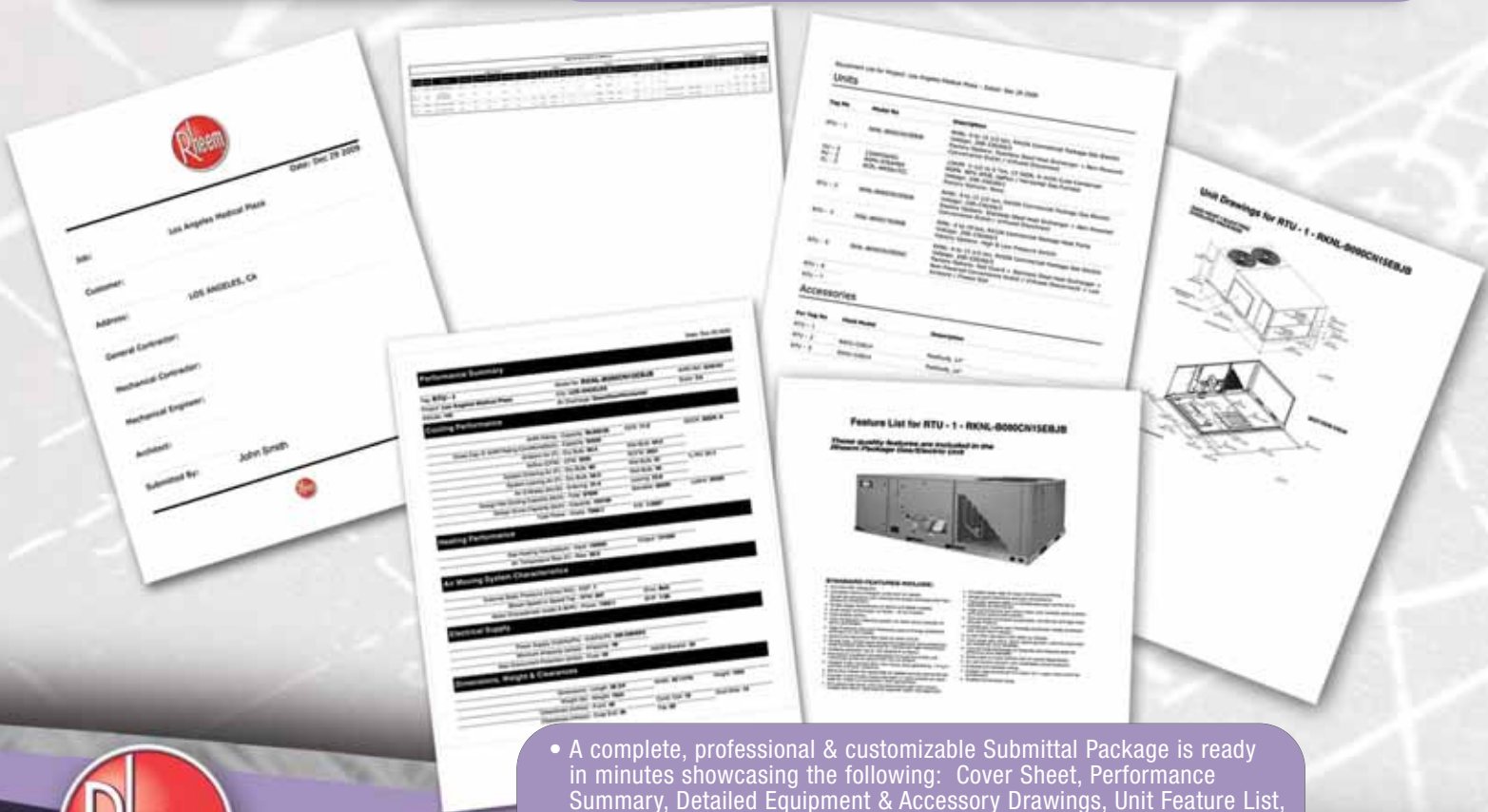
- Manage existing equipment selections within a project: review, edit, duplicate, delete, & add models



# TAB: PRINT SUMMARY



- Easy document management for an individual model and for the complete project



- A complete, professional & customizable Submittal Package is ready in minutes showcasing the following: Cover Sheet, Performance Summary, Detailed Equipment & Accessory Drawings, Unit Feature List, Equipment List/Bill of Materials and an Equipment Schedule



# SYSTEM ACCESS



**DesignStar®  
Professional**  
can be  
accessed via:  
**www.MyRheem.com**  
or  
**www.Rheem.com**

**Take a test-drive & see  
how our tool can make  
your life simpler...**

**Login using your MyRheem/Partners  
username & password or obtain  
immediate access by completing  
the short registration form!**



**Rheem Heating, Cooling & Water Heating**  
P.O. Box 17010 • Fort Smith, AR 72917  
[www.Rheem.com](http://www.Rheem.com)

Rheem manufactures residential & commercial heating, cooling & water heating products.  
*"In keeping with its policy of continuous progress & product improvement, Rheem reserves the right to make changes without notice."*

Printed in the U.S.A. 1/10 DC Form No. M11-1408

*relax*  
It's Rheem®